



 **JLL** SEE A BRIGHTER WAY

7201 W 151st Street
Overland Park, KS 66223

For lease

Built-out kiosk inside
Price Chopper in south OP

900 RSF

Property specifications

Availability: 900 RSF

Lease rate: \$50.00/SF Full Service

- Space is built out and ready to go- hood, grease trap, walk-in cooler, and freezer already in place!
- Rate includes all NNN's and utilities
- Exterior signage available
- Great location inside store right off main entrance near produce section
- Seeking grab-and-go treats (coffee, ice cream etc.) or lunch/dinner options (Chinese, pizza, sushi etc.)

**Contact broker for
additional information**

Jayme Miller
Vice President

jll.com/kansas-city

jayme.miller@jll.com

Jones Lang LaSalle Brokerage, Inc.

+1 816 261 2006

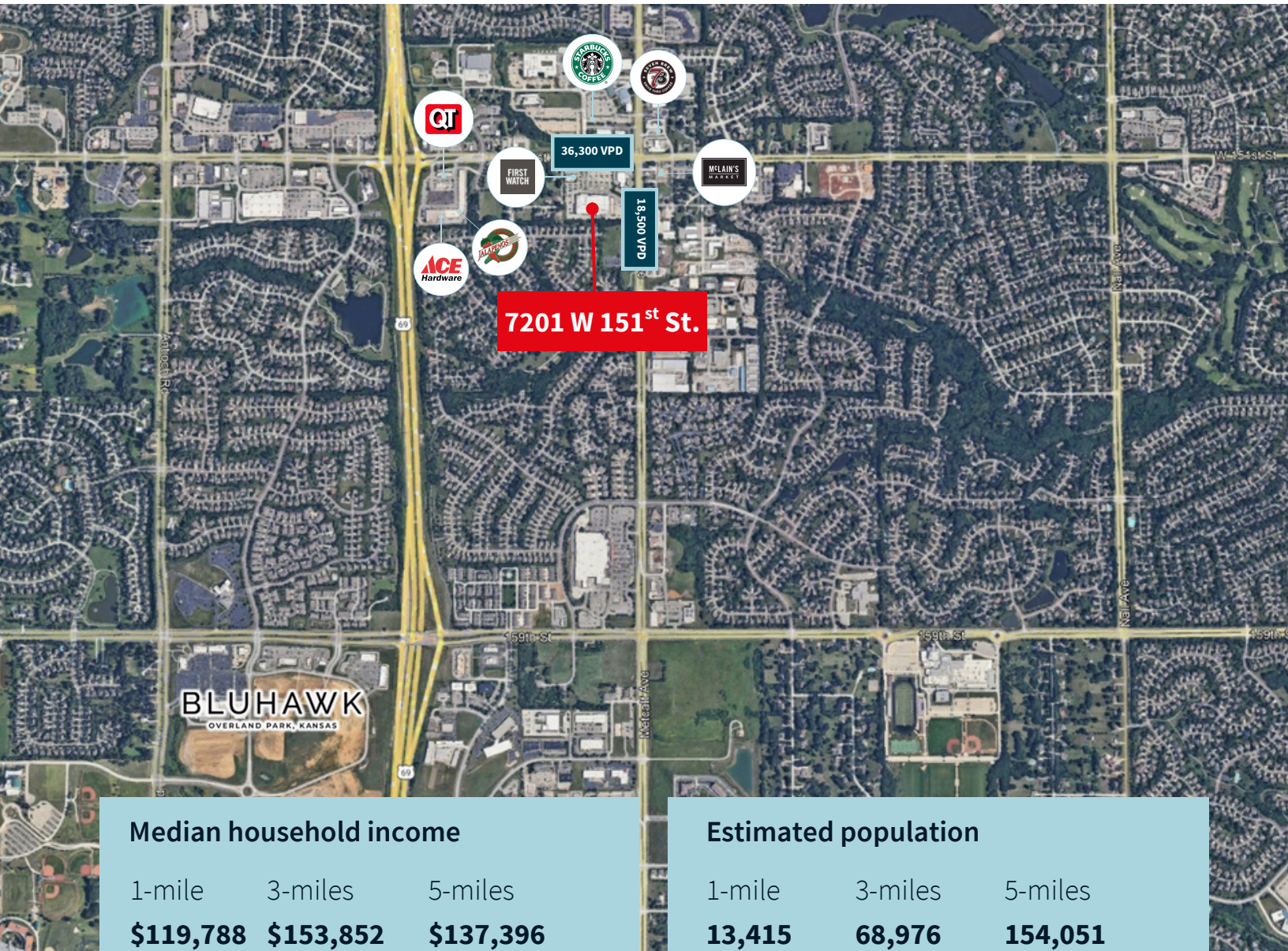
900 SF restaurant kiosk available

Space includes hood, grease trap, walk-in cooler and freezer in place



For lease

7201 W 151st Street | Overland Park, KS 66223



Median household income

1-mile	3-miles	5-miles
\$119,788	\$153,852	\$137,396

Estimated population

1-mile	3-miles	5-miles
13,415	68,976	154,051

**Contact broker for
additional information**

Jayme Miller
Vice President
jayme.miller@jll.com
+1 816 261 2006