



Office For Lease



Leasing Information:  
202.513.6700

**Adam Biberaj**  
202.513.6736  
abiberaj@lpc.com

**Merrill Turnbull**  
202.513.6713  
mturnbull@lpc.com

**Tim Whitebread**  
202.513.6712  
twhitebread@lpc.com

**Lincoln**

Lincoln Property Company  
101 Constitution Avenue, NW Suite 325 East  
Washington, DC 20001

[www.lpc.com](http://www.lpc.com)



**Property Highlights**

- Boutique 8,980 SF floors with 9-foot ceilings
- On-site food service opening 2022
- Full height glass on all sides
- 3,000 square-foot conference center
- Stunning rooftop terrace with Capitol Building views
- Exclusive underground parking
- Lobby concierge
- Fitness center and showers
- Designed to LEED Platinum standards
- Views of Union Market, Capitol Building, and Union Station

**Availabilities**

**SF**

**Lease Rate**

**Date Available**

4th Floor	2,500 - 8,980 SF	\$56.00 FS	Immediately
8th Floor	2,500 - 8,980 SF	\$58.00 FS	July 2023
11th Floor	8,980 SF	\$60.00 FS	Immediately

**Adam Biberaj**

202.513.6736  
 abiberaj@lpc.com

**Merrill Turnbull**

202.513.6713  
 mturnbull@lpc.com

**Tim Whitebread**

202.513.6712  
 twhitebread@lpc.com

**Lincoln**

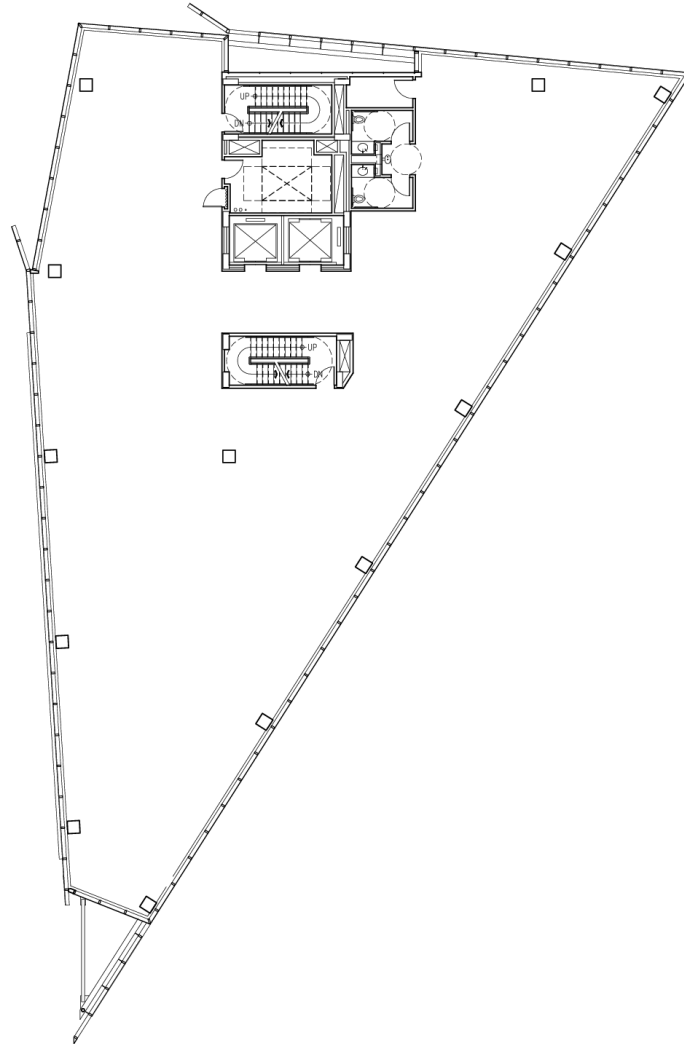


**Adam Biberaj**  
202.513.6736  
abiberaj@lpc.com

**Merrill Turnbull**  
202.513.6713  
mturnbull@lpc.com

**Tim Whitebread**  
202.513.6712  
twhitebread@lpc.com

**Lincoln**



Suite	Size	Lease Rate	Description
11th Floor	8,980 SF	\$60.00 FS	Shell space with small boutique floor plan. 360 degrees of floor-to-ceiling glass with unbelievable views of the Capitol dome, Union Station, and National Cathedral!

**Adam Biberaj**      **Merrill Turnbull**      **Tim Whitebread**  
 202.513.6736      202.513.6713      202.513.6712  
 abiberaj@lpc.com      mturnbull@lpc.com      twhitebread@lpc.com

**Lincoln**



Suite	Size	Lease Rate	Description
4th Floor	2,500 - 8,980 SF	\$56.00 FS	Fully Furnished, Plug-and-Play Opportunity!

**Adam Biberaj**      **Merrill Turnbull**      **Tim Whitebread**  
 202.513.6736      202.513.6713      202.513.6712  
 abiberaj@lpc.com      mturnbull@lpc.com      twhitebread@lpc.com

**Lincoln**



Suite	Size	Lease Rate	Description
8th Floor	2,500 - 8,980 SF	\$58.00 FS	Move in ready condition

**Adam Biberaj**      **Merrill Turnbull**      **Tim Whitebread**  
 202.513.6736      202.513.6713      202.513.6712  
 abiberaj@lpc.com      mturnbull@lpc.com      twhitebread@lpc.com

**Lincoln**





Leasing Information:  
202.513.6700

**Adam Biberaj**  
202.513.6736  
abiberaj@lpc.com

**Merrill Turnbull**  
202.513.6713  
mturnbull@lpc.com

**Tim Whitebread**  
202.513.6712  
twhitebread@lpc.com

# Lincoln

Lincoln Property Company  
101 Constitution Avenue, NW Suite 325 East  
Washington, DC 20001

[www.lpc.com](http://www.lpc.com)