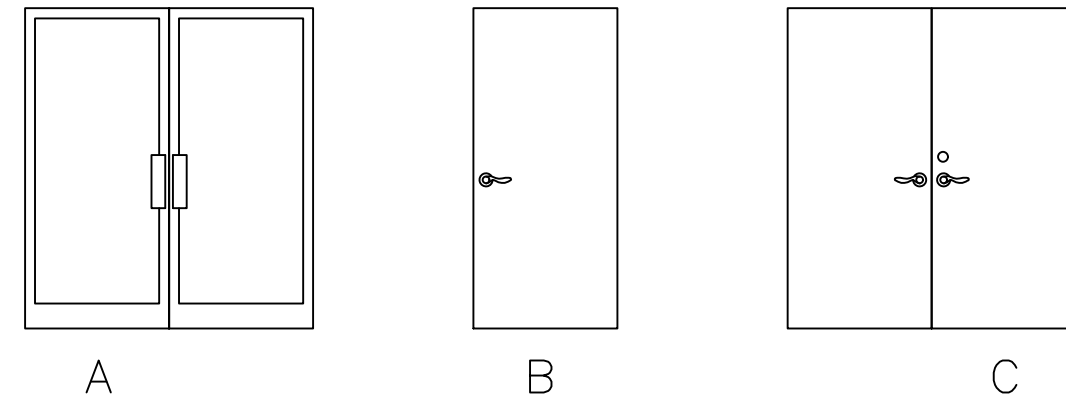


### DOOR SCHEDULE

MARK	DESCRIPTION	SIZE	FINISH	TYPE	HARDWARE
1	PAIR GLASS/ALUMINUM IMPACT	(2)3'0"x8'	ANODIZED	A	PUSH/PULL/CLOSER/DEAD BOLT
2	NEW SOLID CORE WOOD	3'0"x6'8"	PAINT/STAIN	B	LEVER PRIVACY SET
3	NEW SOLID CORE WOOD	3'0"x6'8"	PAINT	B	LEVER KEYSET/DEADBOLT
4	NEW PAIR STEEL	(2)3'0"x7'	PAINT	C	LEVER KEYSET/DEADBOLT
5	NEW SOLID CORE WOOD	3'0"x6'8"	PAINT	B	LEVER KEYSET

29FEB2024 PLAN REVIEW COMMENTS



7TH EDITION FLORIDA BUILDING CODE 2020 ASCE-7-16 EXP. 'C'  
OCCUPANCY TYPE= A2  
CONSTRUCTION TYPE IIIB

170 MPH (ULT.)  
EXPOSURE C  
RISK CATEGORY II

ACI CODE [ ] 3,000 PSI CONG.  
AISC CODE [ ] A36 STEEL

DESIGN WIND PRESSURES:  
WORST CASE NEW STOREFRONT, DOORS & BIFOLD WINDOWS +37.9 PSF/-50.1 PSF  
METAL STUD CONSTRUCTION SHALL COMPLY WITH ANSI S211

### WALL LEGEND

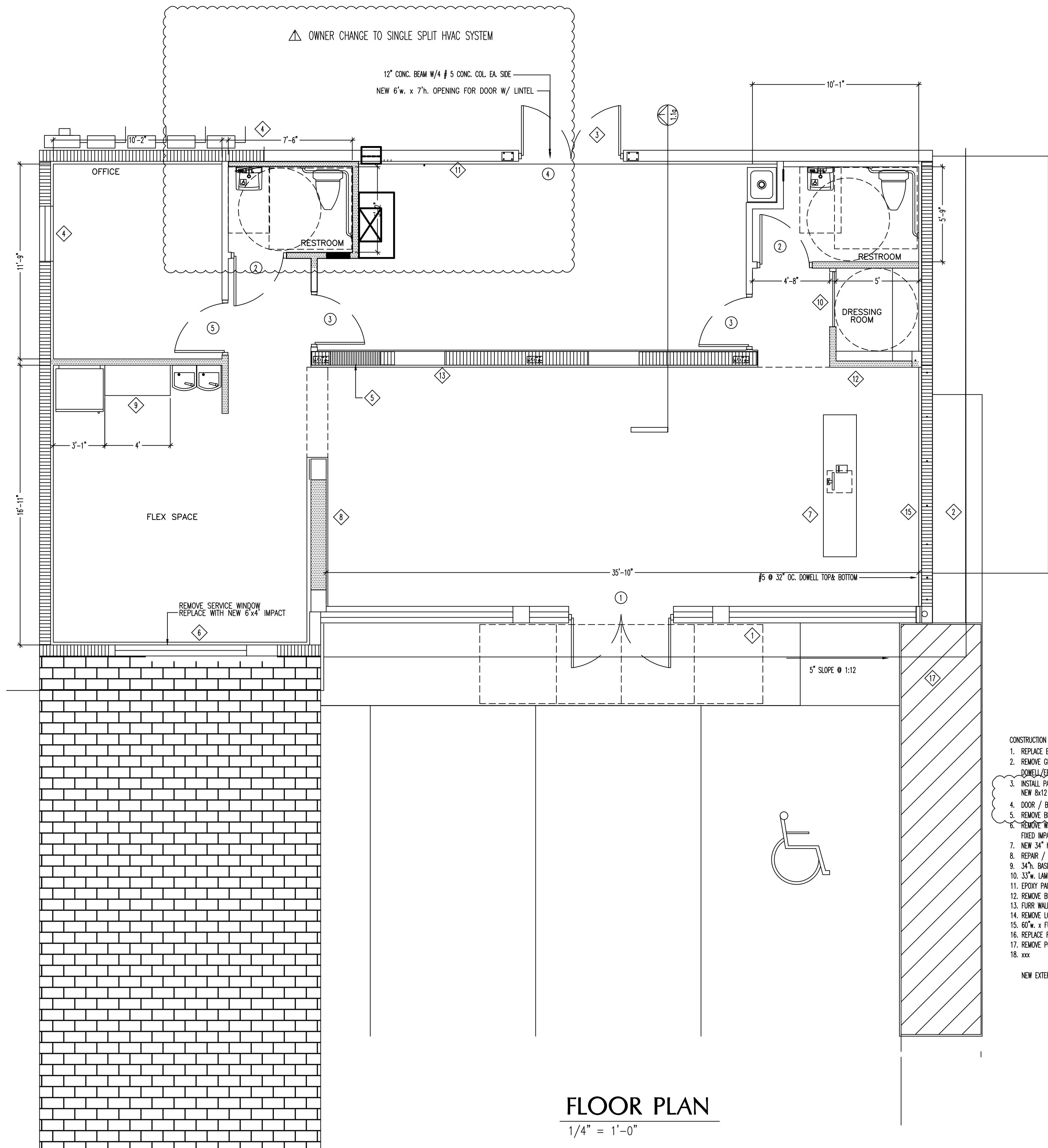
- NEW INTERIOR PARTITION
- EXISTING WALL OR PARTITION
- WALL OR PARTITION TO BE REMOVED
- EXISTING 1 HR. RATED PARTITION
- NEW INSULATED PARTITION
- NEW LOW WALL

THOMAS J. TWOMEY, PROFESSIONAL ENGINEER, STATE OF FLORIDA,  
LICENSE NO. 25626  
THIS ITEM HAS BEEN DIGITALLY SIGNED AND SEALED BY  
THOMAS J. TWOMEY, P.E., ON 06/12/2024 USING A DIGITAL SIGNATURE.  
PRINTED COPIES OF THIS DOCUMENT ARE NOT CONSIDERED SIGNED  
AND SEALED AND THE SHA AUTHENTICATION CODE MUST BE  
VERIFIED ON ANY ELECTRONIC COPIES.



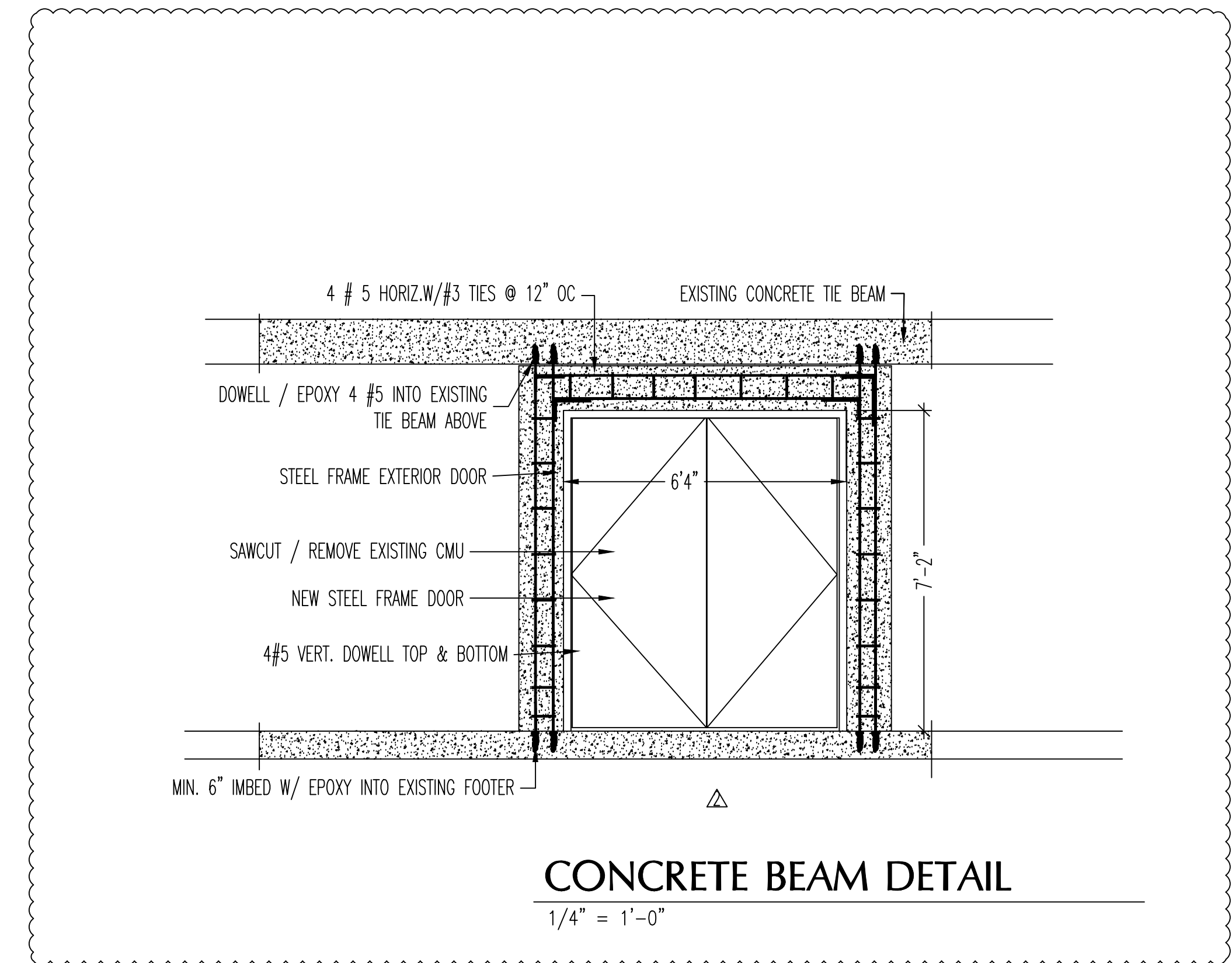
THOMAS TWOMEY,  
PE # 25626  
JIM PAINE,  
RA # 9524  
2831A EXCHANGE CT.  
WEST PALM BEACH,  
FLORIDA, 33409  
(561) 686-5853

METRO  
DESIGN GROUP  
(561) 686-5853



### FLOOR PLAN

1/4" = 1'-0"



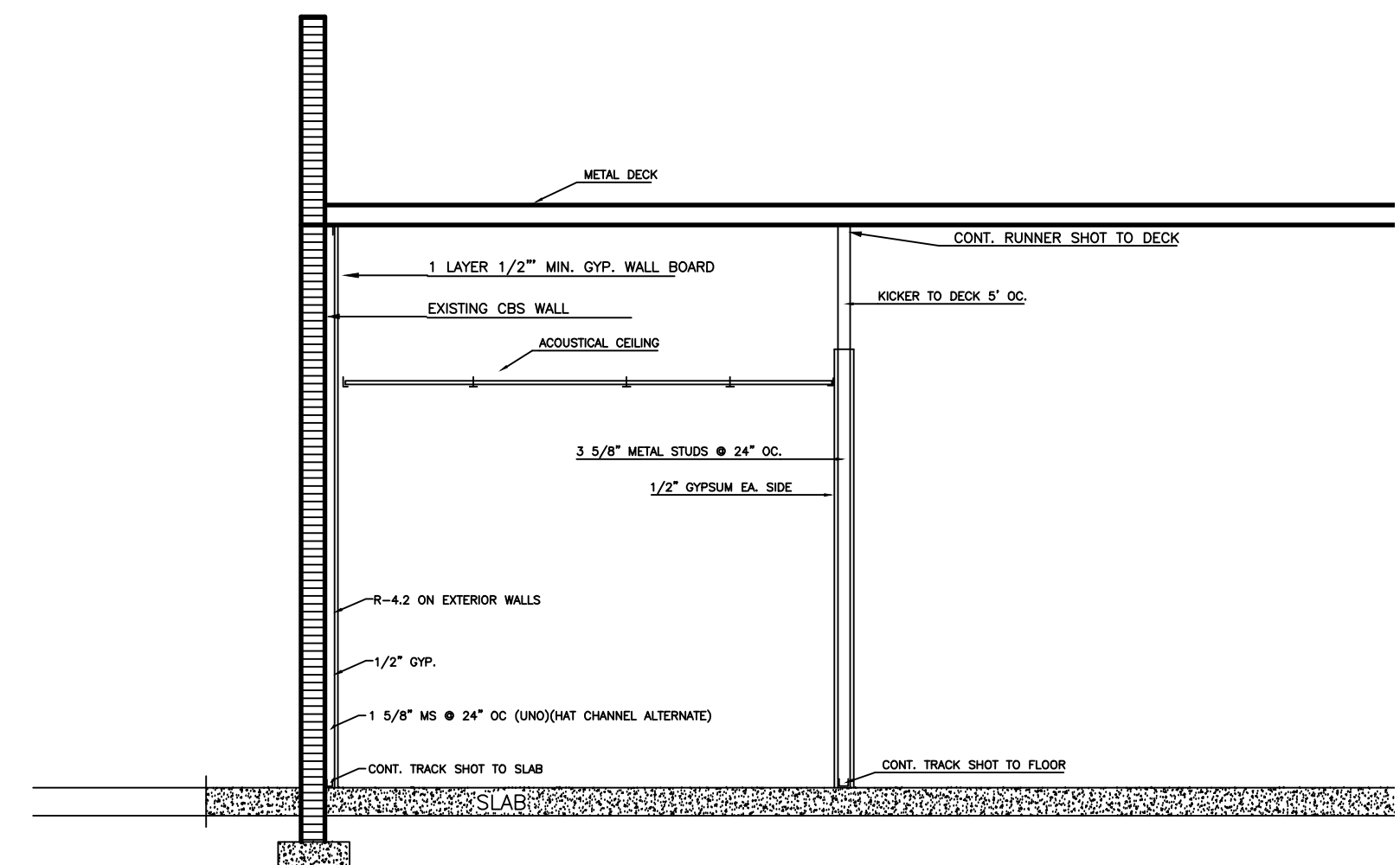
### CONCRETE BEAM DETAIL

1/4" = 1'-0"

#### CONSTRUCTION NOTES

- REPLACE EXISTING STOREFRONT WITH NEW IMPACT GLASS.
- REMOVE GLASS - BLOCK IN WALL TO BEAM ABOVE. W/5 VERT. @ 32"OC
- DOWEL/EPOXY TOP & BOTTOM
- INSTALL PAIR STEEL DOORS.
- NEW 8x12 CONG. COL. EA. SIDE & 8x12 BEAM W/4#5 @3 TIES@ 12"
- DOOR / BLOCK IN EXISTING OPENING
- REMOVE BLOCK TO FLOOR CREATE NICHE FOR COOLER.
- REMOVE BACK-UP WINDOW. RE-CENTER NEW 6'w. x 5'h.
- FIXED IMPACT GLASS.
- NEW 34" H. CASH COUNTER
- REPAIR / PAINT OVP. CEILING
- 34" H. BASE CABINET
- 33" W. LAMINATED DOOR FROM 18" TO 72" AFF
- EPOXY PAINT BARE BLOCK WALL
- REMOVE BLOCK TO BEAM. RE-FRAME PER PLAN
- FLOOR WALL. ADD PLYWOOD BACKING, OVP.
- REMOVE LOUNER / BLOCK IN.
- 60" W. x FULL HT. MIRROR OVER TV.
- REPLACE ROCK BED WITH 4" THICK REINFORCED CONG. SLAB
- REMOVE PORTION OF SIDEWALK. POUR NEW RAMP @ 1:12
- xxx

NEW EXTERIOR FINISHES TO MATCH EXISTING



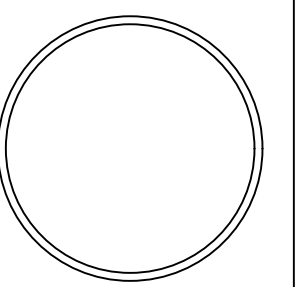
### BLOCK WALL CONSTRUCTION

### TYP. INTERIOR PARTITION

5/8" TYPE 'X' MINIMUM EA. SIDE

SCALE: 1/4" = 1'-0"

REVISIONS:  
29FEB2024 PLAN REVIEW COMMENTS  
22APRIL2024 AC REV.



DATE: 16AUG2023  
DRAWN: PTR  
ACAD FILE: MARIBERBE

SHEET#  
**1.0a**  
OF  
**11**

MARIE BIRDIE  
7116 S DIXIE HIGHWAY  
WEST PALM BEACH, FLORIDA 33405