

104 RENAISSANCE CIRCLE, MAULDIN, SC 29662

STANDALONE OFFICE BUILDING FOR LEASE



LJ Kleger | (704) 765-4620 | lj@onealliancecompanies.com

ABOUT THE SPACE

+/- 1,800 SF STANDALONE OFFICE BUILDING FOR LEASE

- Efficient two-story layout (built 2006)
- Five (5) private offices
- Dedicated reception area and conference room
- Full kitchen/breakroom + copy room
- Two (2) ADA-compliant restrooms
- Ample storage and coat closet space
- Recessed lighting and updated interior finishes





THE DETAILS

Location 104 Renaissance Circle, Mauldin, SC

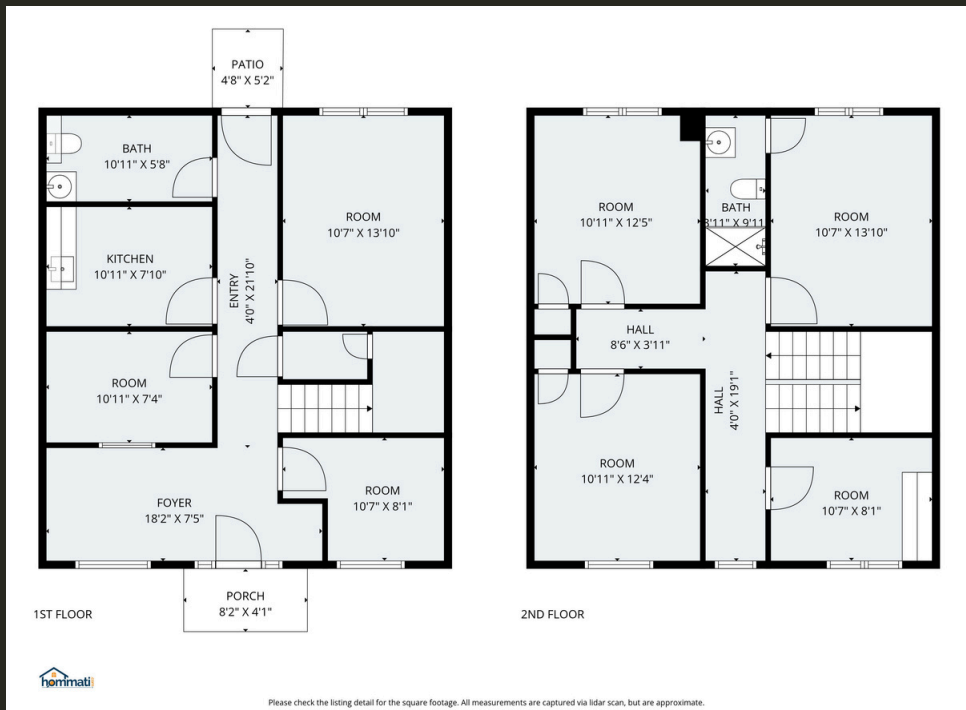
County Greenville

Buildings 1

Stories 2

AVAILABLE SPACE

Suite	SF	Floor	Rent	Lease Type
104	+/- 1,800	1 st & 2 nd	\$2,200/Month	MG







MAULDIN, SC

Mauldin is a rapidly growing suburban city in Greenville County and part of the larger Greenville-Anderson-Greer metropolitan area. As of the 2020 census, the city had a population of just over 24,700, but recent estimates show significant growth to nearly 30,000+ residents, reflecting its increasing popularity as a residential and business hub. Its proximity to downtown Greenville—about 8 miles away—makes it especially attractive for commuters and those seeking suburban living with easy urban access.

In modern times, Mauldin has evolved into a thriving suburban community with strong economic ties to the greater Upstate South Carolina region. The city benefits from its location near major transportation corridors like Interstate 385, which connects it to Interstate 85 and other regional markets. Economic activity in the area includes manufacturing, logistics, retail, and professional services, with continued development such as new mixed-use projects and commercial centers helping drive local growth.

Demographically, Mauldin is considered a stable, middle-income community with a median household income above the national average and a relatively balanced age distribution. The city has seen steady population increases over the past decade, fueled by job opportunities, a lower cost of living compared to larger metro areas, and an overall high quality of life. This growth has contributed to new housing developments and expanding infrastructure to accommodate residents and businesses alike.

Today, Mauldin is known for its community-oriented atmosphere, local parks, and cultural amenities like the Mauldin Cultural Center. It is also part of the “Golden Strip” region (along with nearby Simpsonville and Fountain Inn), an area recognized for its strong residential growth and economic expansion. With its blend of history, accessibility, and ongoing development, Mauldin continues to position itself as one of the more desirable suburban markets in the Upstate region of South Carolina.

