



**4775 MENDEL COURT
SUITES A & B**
SOUTH FULTON, GA 30336

For Lease
5,720 - 11,440±
Office / Warehouse Space

WILSON COVINGTON, SIOR

Senior Vice President
404.942.2073
wcovington@kingindustrial.com

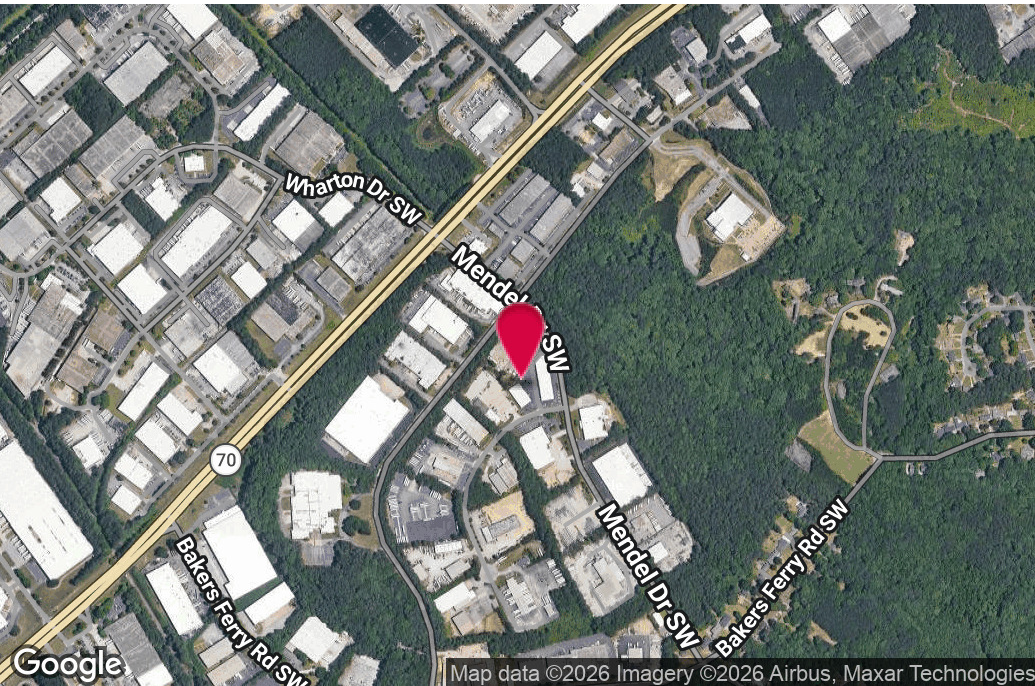
IAN HICKS

Associate
678.348.6319
ihicks@kingindustrial.com

King *Industrial
Realty, Inc.*

Industrial • Commercial • Investment
404.942.2000 | kingindustrial.com

FOR LEASE
5,720 - 11,440± SF
OFFICE/WAREHOUSE



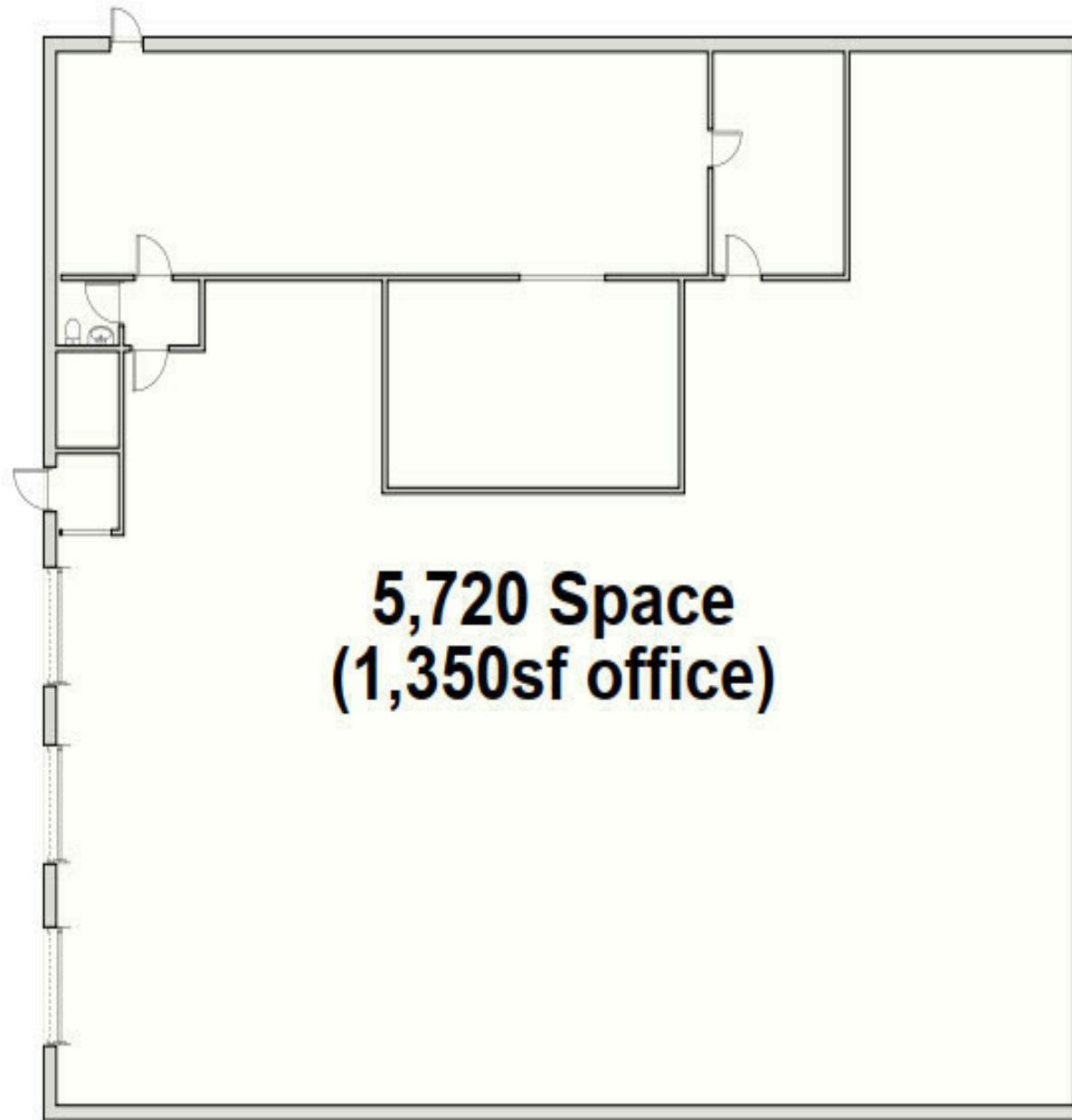
PROPERTY HIGHLIGHTS

- Suites A & B Available. May Be Leased Individually.
- **Suite A:** 5,720± with 1,350± SF Office
- 2 Dock High Doors & 1 Drive-In Door
- **Suite B:** 5,720± with 500± SF Office
- 3 Dock High Doors & 1 Drive-In Door
- 16' Clear Height
- 200 Amp 120/208 Volt 3 Phase Power
- Well Maintained Building

BUILDING SUMMARY

Lot Size:	2.02 Acres
Building Size:	11,440 SF
Zoning:	M2

SUITE A FLOOR PLAN



**5,720 Space
(1,350sf office)**

WILSON COVINGTON, SIOR

Senior Vice President

404.942.2073

wcovington@kingindustrial.com

IAN HICKS

Associate

678.348.6319

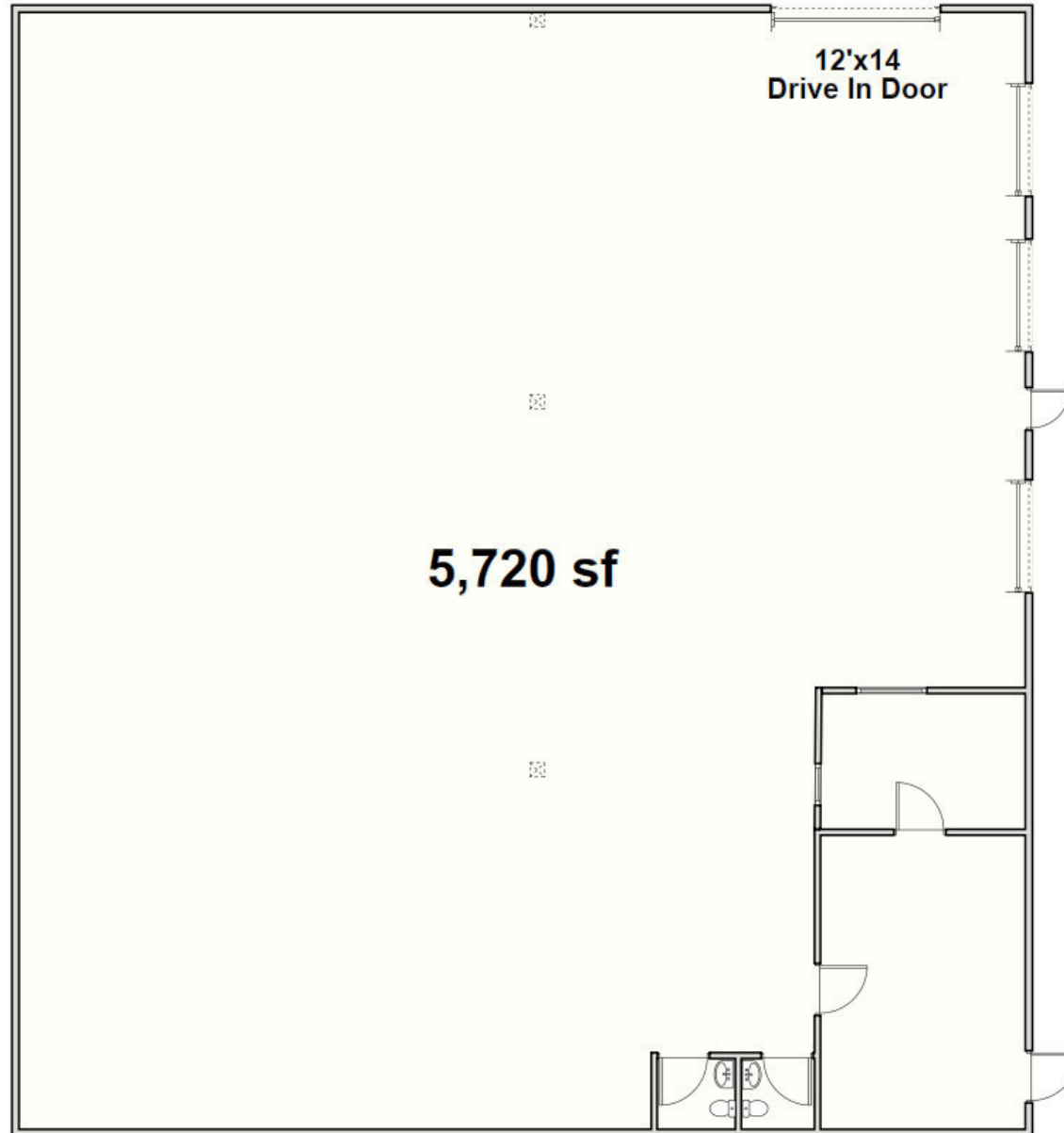
ihicks@kingindustrial.com

Every effort has been made to provide accurate information, but no liability is assumed for errors or omissions.

King Industrial
Realty, Inc. **CORFAC**
INTERNATIONAL

Industrial • Commercial • Investment
404.942.2000 | kingindustrial.com

SUITE B FLOOR PLAN



ADDITIONAL
PHOTO



WILSON COVINGTON, SIOR

Senior Vice President

404.942.2073

wcovington@kingindustrial.com

IAN HICKS

Associate

678.348.6319

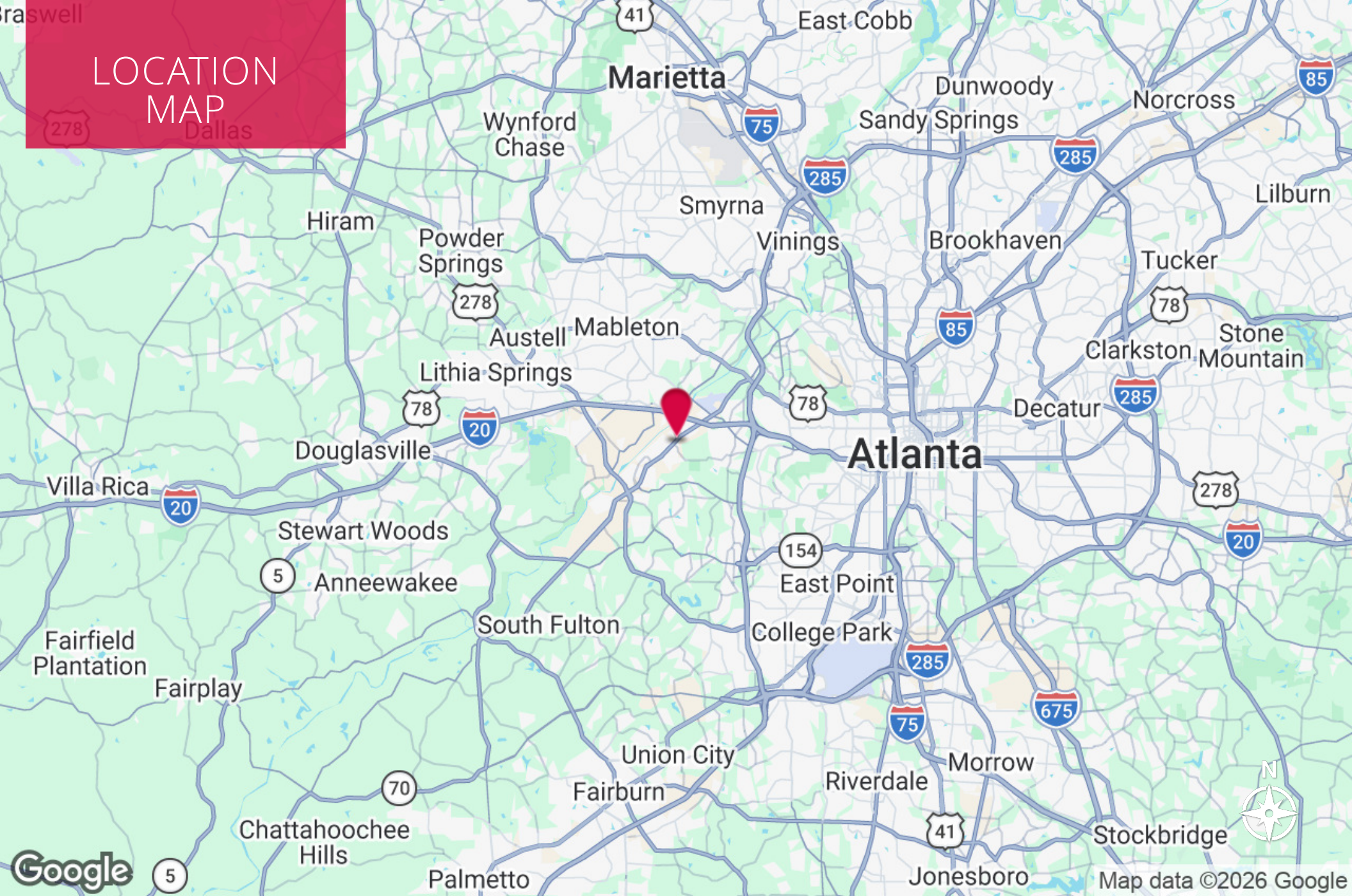
ihicks@kingindustrial.com

King Industrial
Realty, Inc.

CORFAC
INTERNATIONAL

Industrial • Commercial • Investment
404.942.2000 | kingindustrial.com

LOCATION MAP



Google

Map data ©2026 Google

king Industrial Realty, Inc. **CORFAC** INTERNATIONAL
Industrial • Commercial • Investment
404.942.2000 | kingindustrial.com

WILSON COVINGTON, SIOR Senior Vice President 404.942.2073 wcovington@kingindustrial.com	IAN HICKS Associate 678.348.6319 ihicks@kingindustrial.com
---	--

Every effort has been made to provide accurate information, but no liability is assumed for errors or omissions.