



Rare Outside Storage Facility

Property Details

Building SF:	18,400
Site Size Acres:	4.78
Office SF:	3,200
Clear Height:	16'
Exterior Docks:	2
Drive-In Doors:	5 (Drive-Thru Capabilities)
Car Parking:	+/- 40
Trailer Parking:	Approved
Power:	800a/240v
County:	Will
Occupancy:	01/01/2023
Lease Rate:	Subject To Offer

For more information, please contact:

Brian Colson

Principal, Industrial Services
brian.colson@avisonyoung.com
+1 847 886 0228

Brian Pomorski

Vice President, Industrial Services
brian.pomorski@avisonyoung.com
+1 708 912 2807

Owned by:



18,400 SF Building Layout

Outside Storage Facility
1320 Enterprise Drive
Romeoville, IL 60446



Potential Build-To-Suit Conceptual Plan

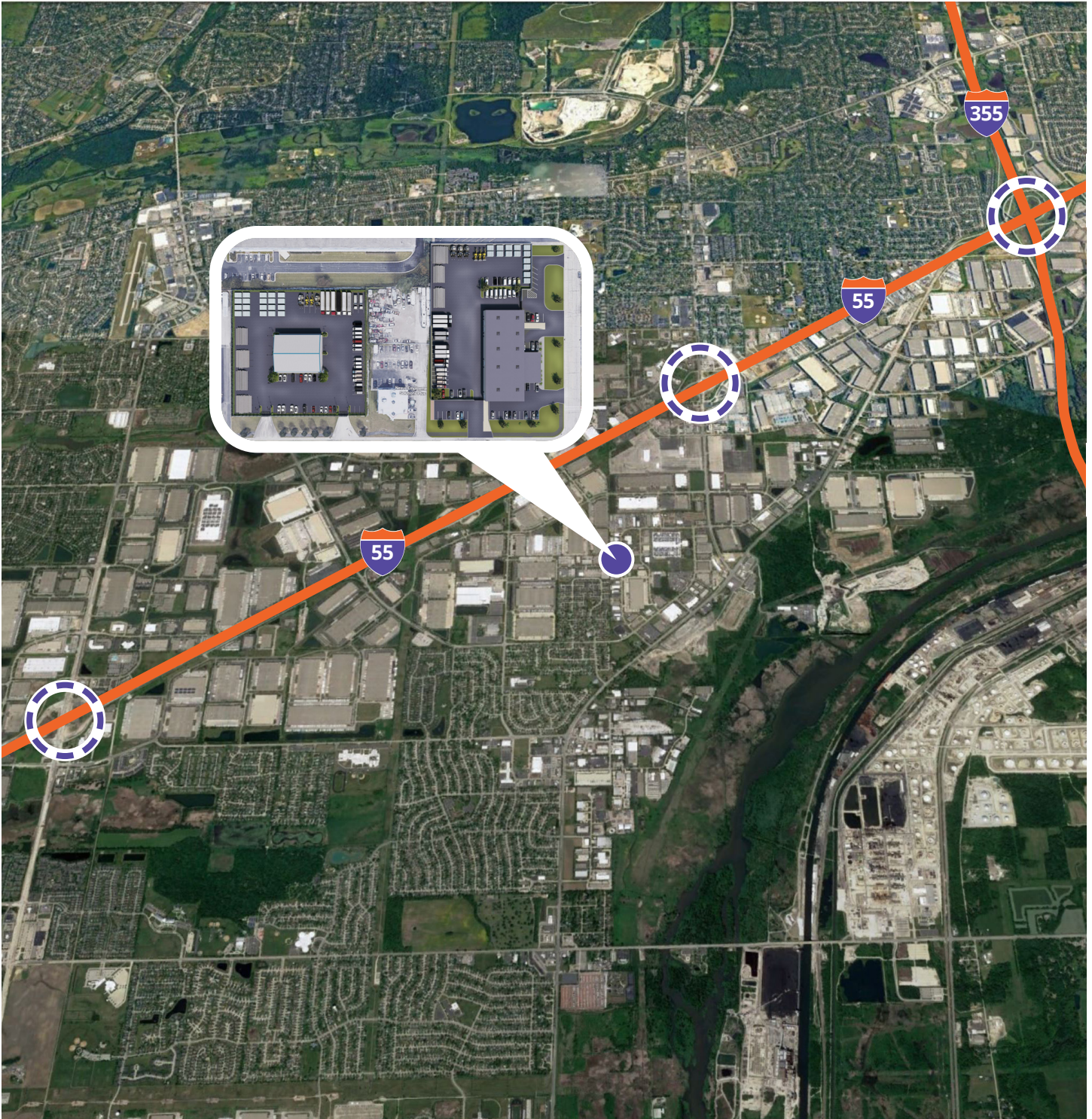
Outside Storage Facility
1320 Enterprise Drive
Romeoville, IL 60446



Outside Storage Facility For Lease

1320 Enterprise Drive
Romeoville, IL 60446

Aerial



For more information, please contact:



Brian Colson
Principal, Industrial Services
brian.colson@avisonyoung.com
+1 847 886 0228

Brian Pomorski
Vice President, Industrial Services
brian.pomorski@avisonyoung.com
+1 708 912 2807

Owned by:

