

JAMESON.

FOR LEASE OFFICE

806 Central Ave
Highland Park, IL 60035

\$35.00 SF/yr

Brent Burden, CCIM
Senior Vice President
847.826.7271
bburden@jameson.com

Maria McKinsey
Broker Associate
773.799.0007
maria@chicagobroker.com

JAMESONCOMMERCIAL.COM

©Jameson Real Estate LLC. All information provided herein is from sources deemed reliable. No representation is made as to the accuracy thereof & it is submitted subject to errors, omissions, changes, prior sale or lease, or withdrawal without notice. Projections, opinions, assumptions & estimates are presented as examples only & may not represent actual performance. Consult tax & legal advisors to perform your own investigation.



JAMESON.



LEASE OVERVIEW

LEASE PRICE: \$35.00 SF/yr
SUITES: Medical Office/Retail
BUILDING SIZE: 33,020 SF
YEAR BUILT: 2001
ZONING: B4-6
MARKET: Highland Park
CROSS STREETS: Central Ave./Green Bay Rd.

AREA TENANTS

- Jimmy Johns
 - Jade
 - Smile Group
 - Dream Kitchens
-

PROPERTY DESCRIPTION

2nd floor medical office space- existing conditions
Storefront office/retail- vanilla box can build to suit

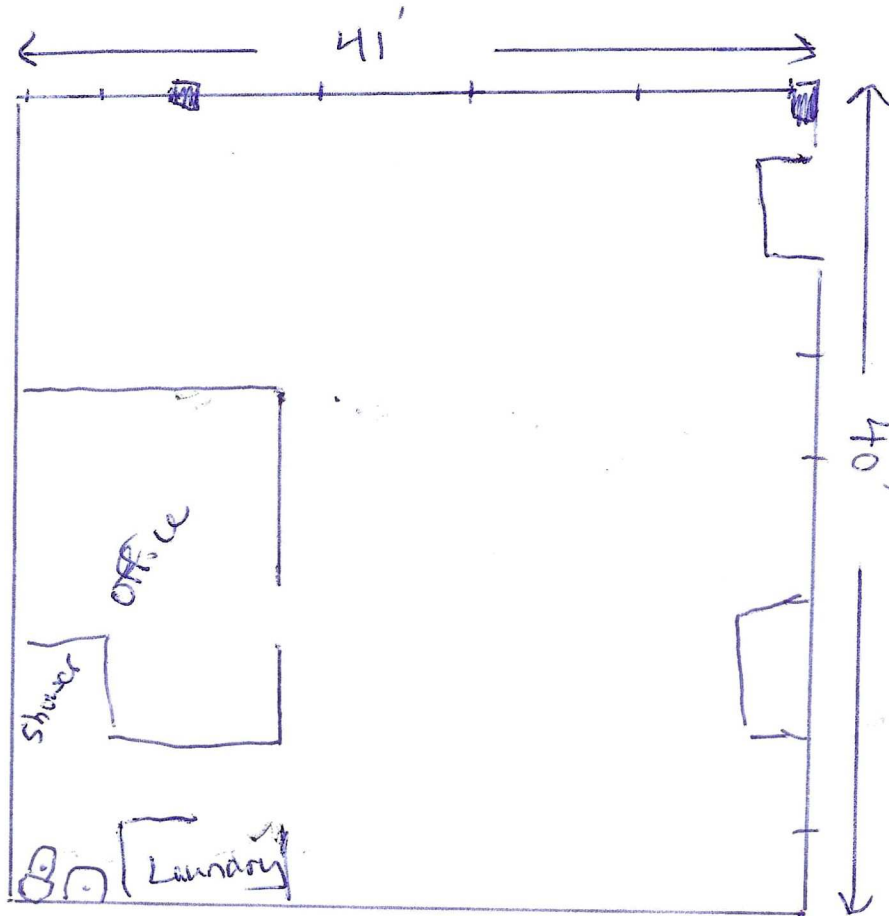
PROPERTY HIGHLIGHTS

- Beautiful neighborhood center
 - Medical Office
 - Retail
 - Parking
 - Downtown Highland Park
 - Suite 203- 1,440 RSF- existing conditions medical office
 - Suite 104- 1,779 RSF- vanilla box
-

AREA AND TRANSPORTATION HIGHLIGHTS

- Walk to Metra
 - 2 minute drive to Hwy. 41
 - Walk to downtown Highland Park
-

806 Central Ave., Ste. 104
1,779 RSF

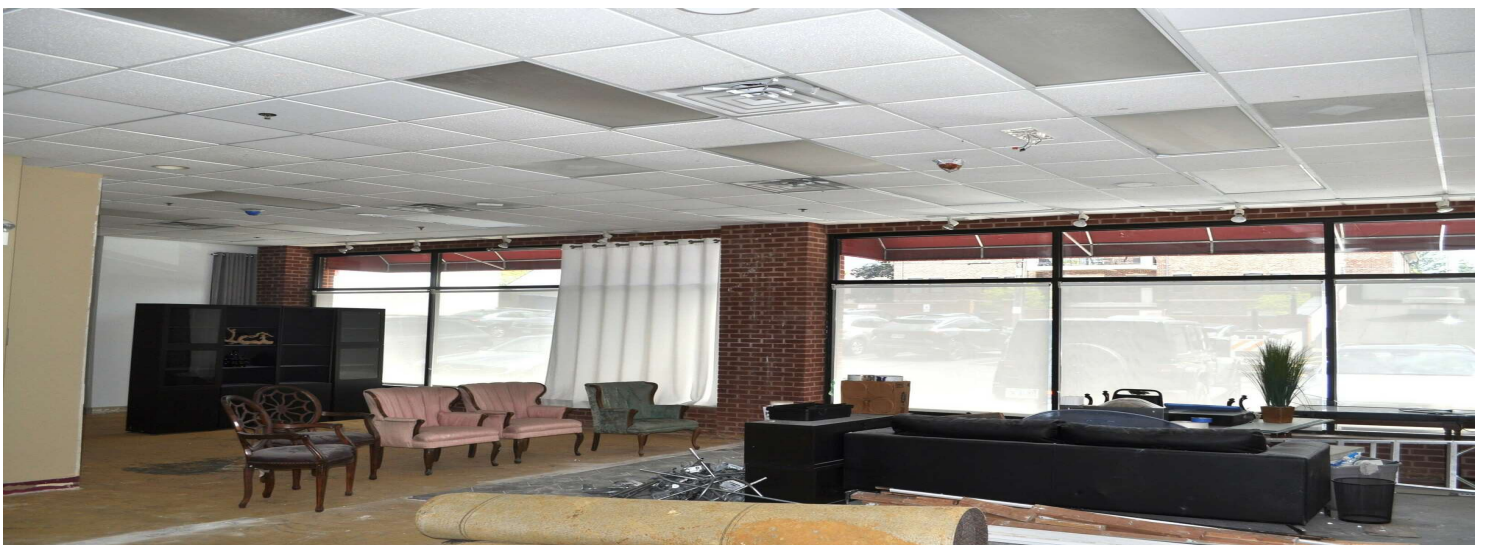
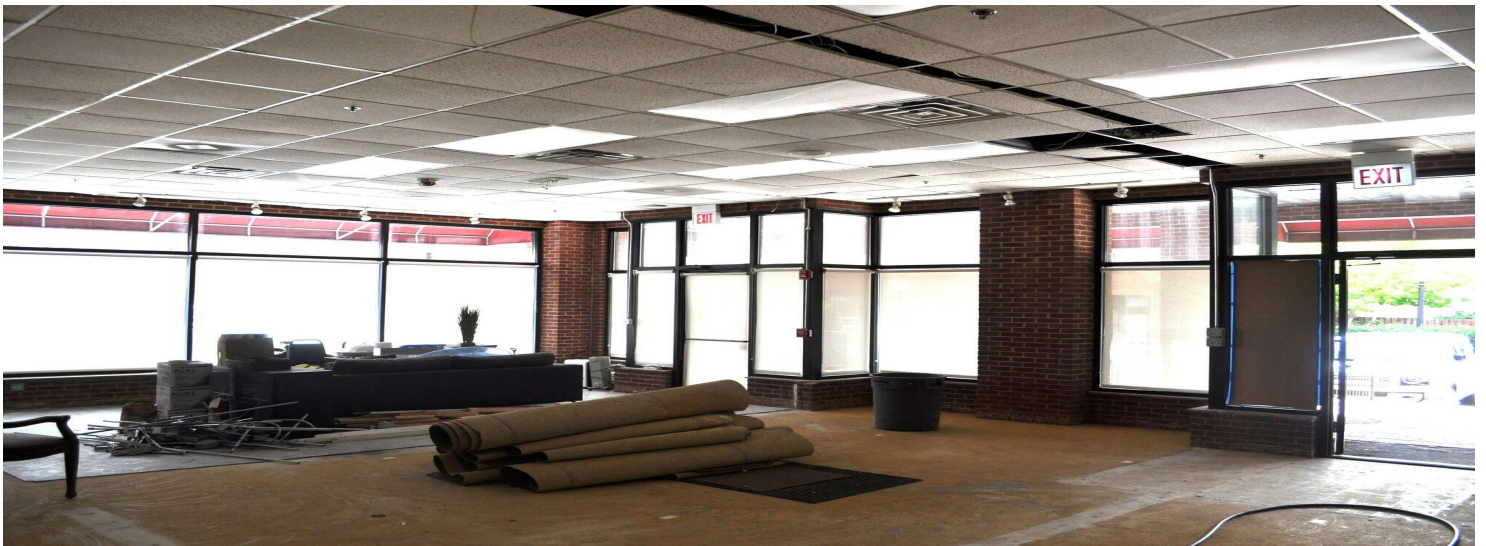


JAMESON.

INTERIOR PHOTOS

806 Central Ave, Highland Park, IL 60035

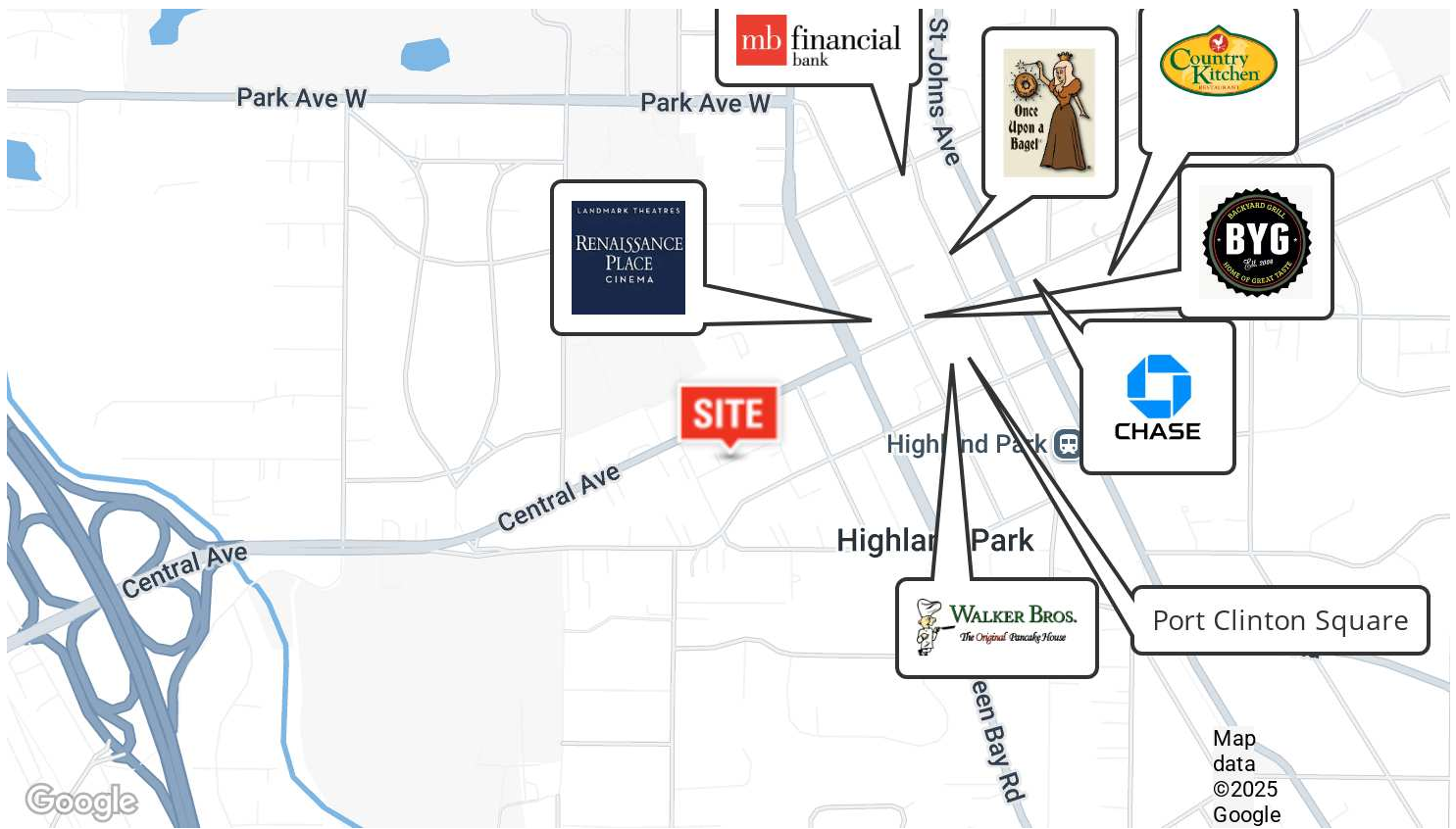
\$35.00 SF/yr



AERIAL & STREET DETAIL

806 Central Ave, Highland Park, IL 60035

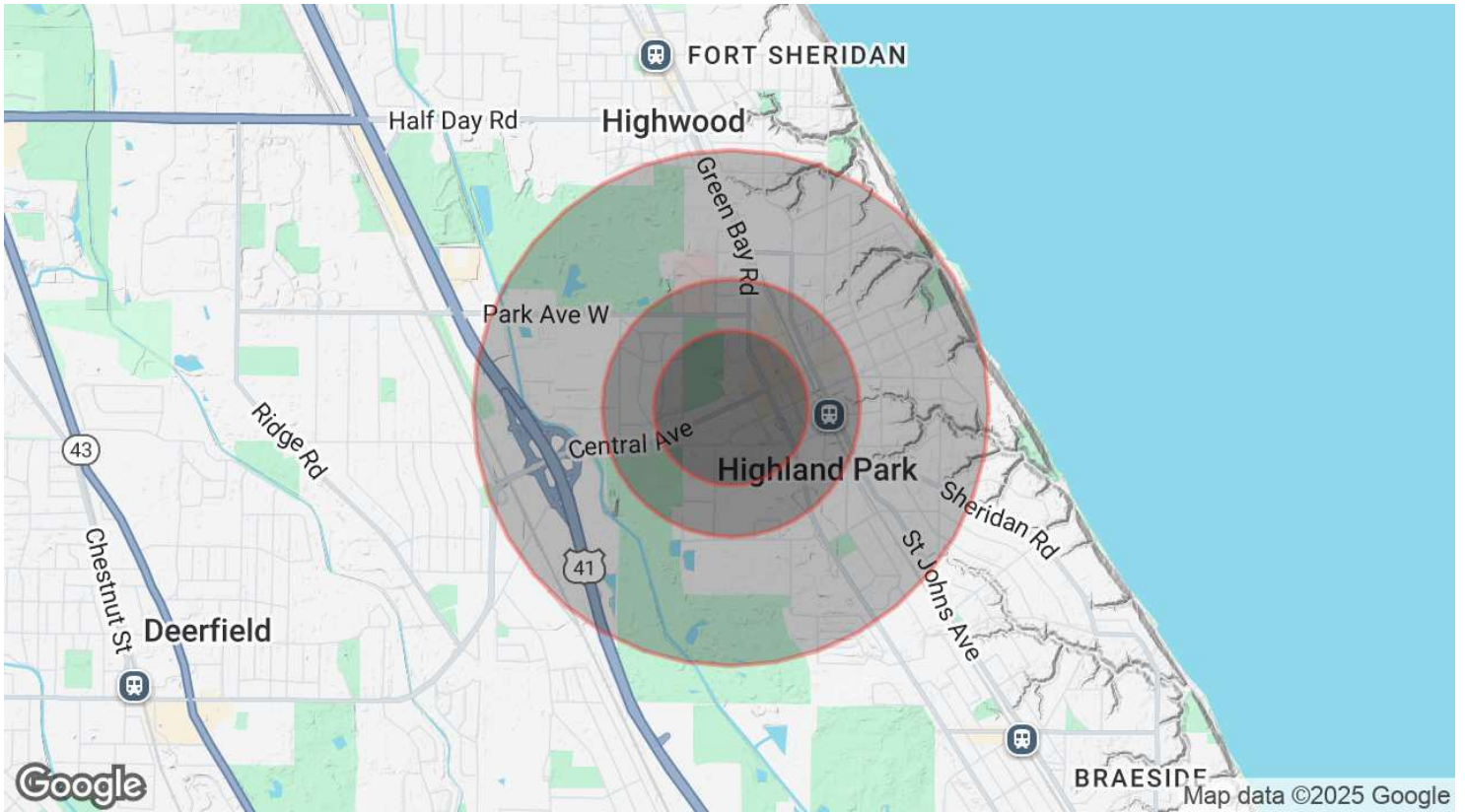
\$35.00 SF/yr



DEMOGRAPHICS MAP & REPORT

806 Central Ave, Highland Park, IL 60035

\$35.00 SF/yr



POPULATION

	0.3 MILES	0.5 MILES	1 MILE
Total Population	1,628	3,378	9,470
Average Age	49	47	46
Average Age (Male)	46	45	44
Average Age (Female)	51	49	48

HOUSEHOLDS & INCOME

	0.3 MILES	0.5 MILES	1 MILE
Total Households	836	1,597	4,062
# of Persons per HH	1.9	2.1	2.3
Average HH Income	\$158,306	\$176,990	\$197,246
Average House Value	\$643,293	\$676,507	\$752,303

Demographics data derived from AlphaMap