

FOR LEASE

1730 WEST ST ANNAPOLIS, MD 21401



**Medical
Office**

Laurie Murphy-Zuiderhof

443.756.5102

Laurie@hyattcommercial.com

Treva Ghattas

301.991.6334

treva@hyattcommercial.com

Justin Mullen

410.260.6546

jmullen@hyattcommercial.com

HIGHLIGHTS

- 3,309 SF Class 'A' office space available
- Well appointed space with high vaulted ceiling and significant window line
- Mix of private offices on the perimeter and large open bullpen area in the middle of the suite
- LEED certified building with unique curb appeal
- Join co-tenants Childrens National Specialty Care, Elevate Life Integrative
- Health, Kuntun Mountain Acupuncture & others Substantial surface parking in rear of the building
- Quick access to Luminis Health Anne Arundel Medical Ctr, Downtown Annapolis, Rt. 50 and I-97



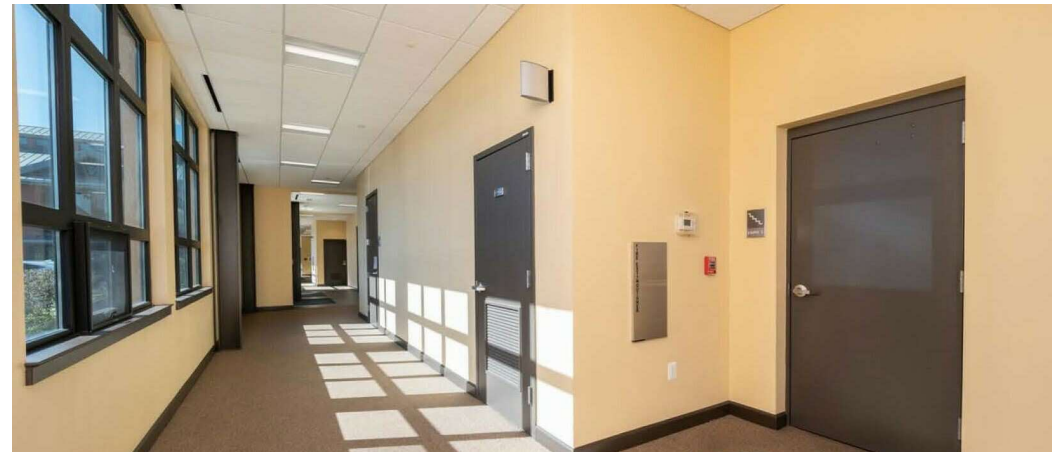
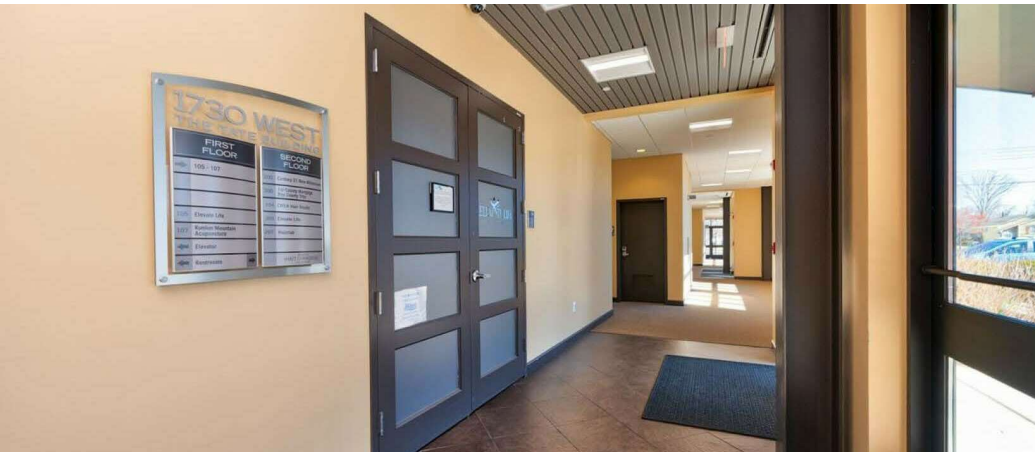
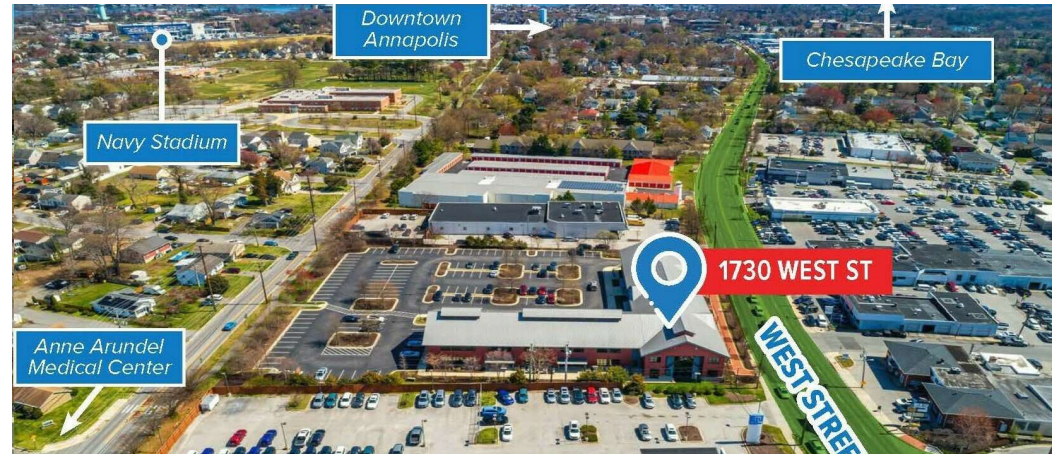
OFFERING

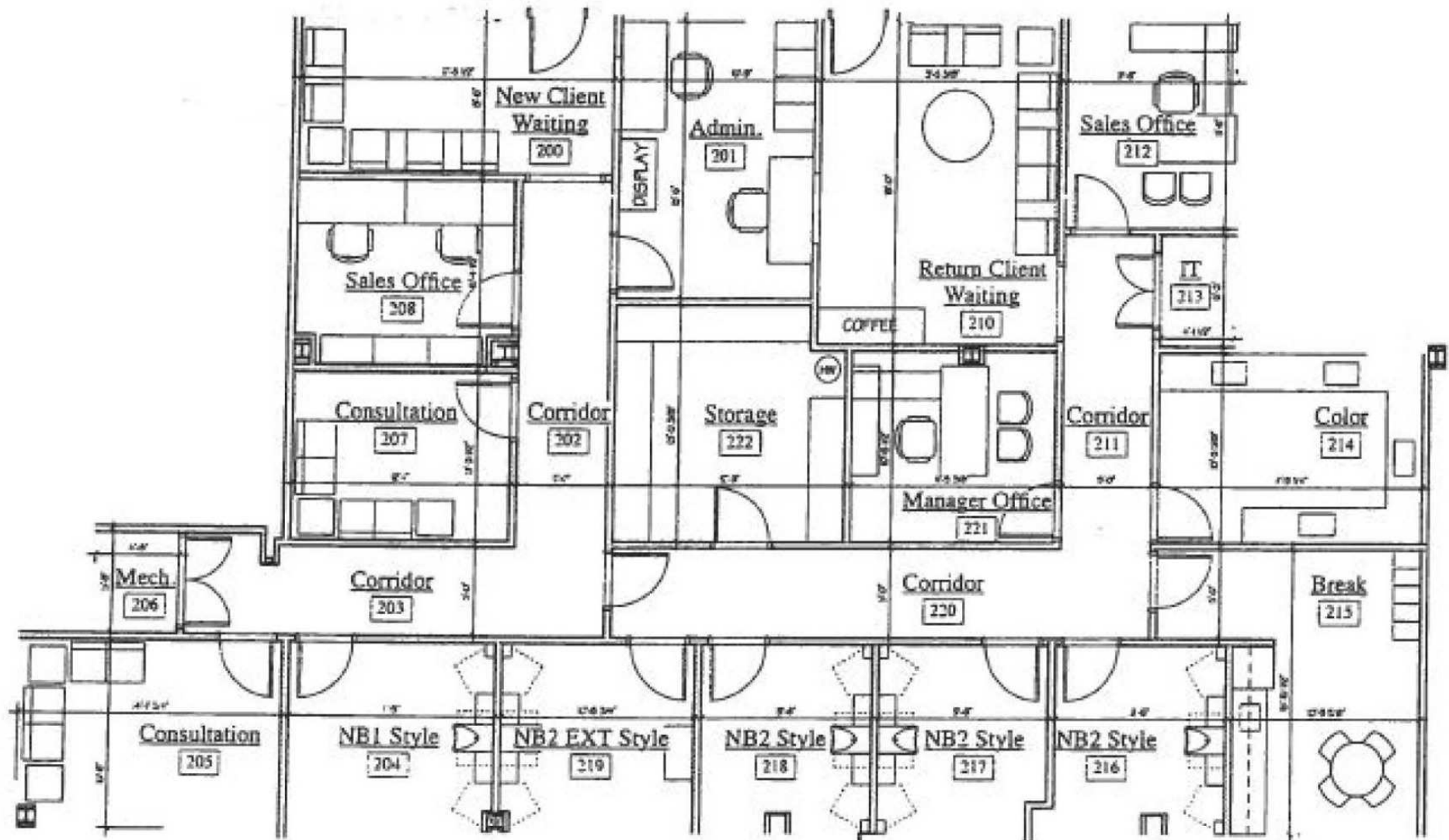


FOR LEASE OFFICE SPACE

| | |
|-----------|----------|
| Price | Withheld |
| Available | 5/1/2025 |

| SPACES | SPACE SIZE |
|-----------|------------|
| Suite 207 | 3,373 SF |





RETAILER MAP





CONTACT

HYATT COMMERCIAL

410.266.8800

2568A Riva Rd, Suite 300, Annapolis, MD 21401

Laurie Murphy-Zuiderhof

443.756.5102

Laurie@hyattcommercial.com

Treva Ghattas

301.991.6334

treva@hyattcommercial.com

Justin Mullen

410.260.6546

jmullen@hyattcommercial.com

While we have no reason to doubt the accuracy of any of the information supplied, we cannot, and do not, guarantee its accuracy. All information should be independently verified prior to a purchase or lease of the property. We are not responsible for errors, omissions, misuse, or misinterpretation contained herein and make no warranty of any kind, express or implied, with respect to the property or any other matters. The property is subject to price change or withdrawal without notice.