



**Crest**  
Commercial Realty

**Office**

**FOR LEASE**

**The Lemberg Co. Building**

11 W. Monument,  
Dayton, OH 45402



**Tim Albro**

O 937-222-1600 Ext. 104  
C 937-609-8071  
talbro@crestrealtyohio.com



6601 Centerville Business Parkway, Dayton, OH 45459 937-222-1600, www.crestrealtyohio.com



## The Lemberg Co. Building

A Dayton landmark, 11 W. Monument features beautiful 1920's architecture with high ceilings and classic finishes.

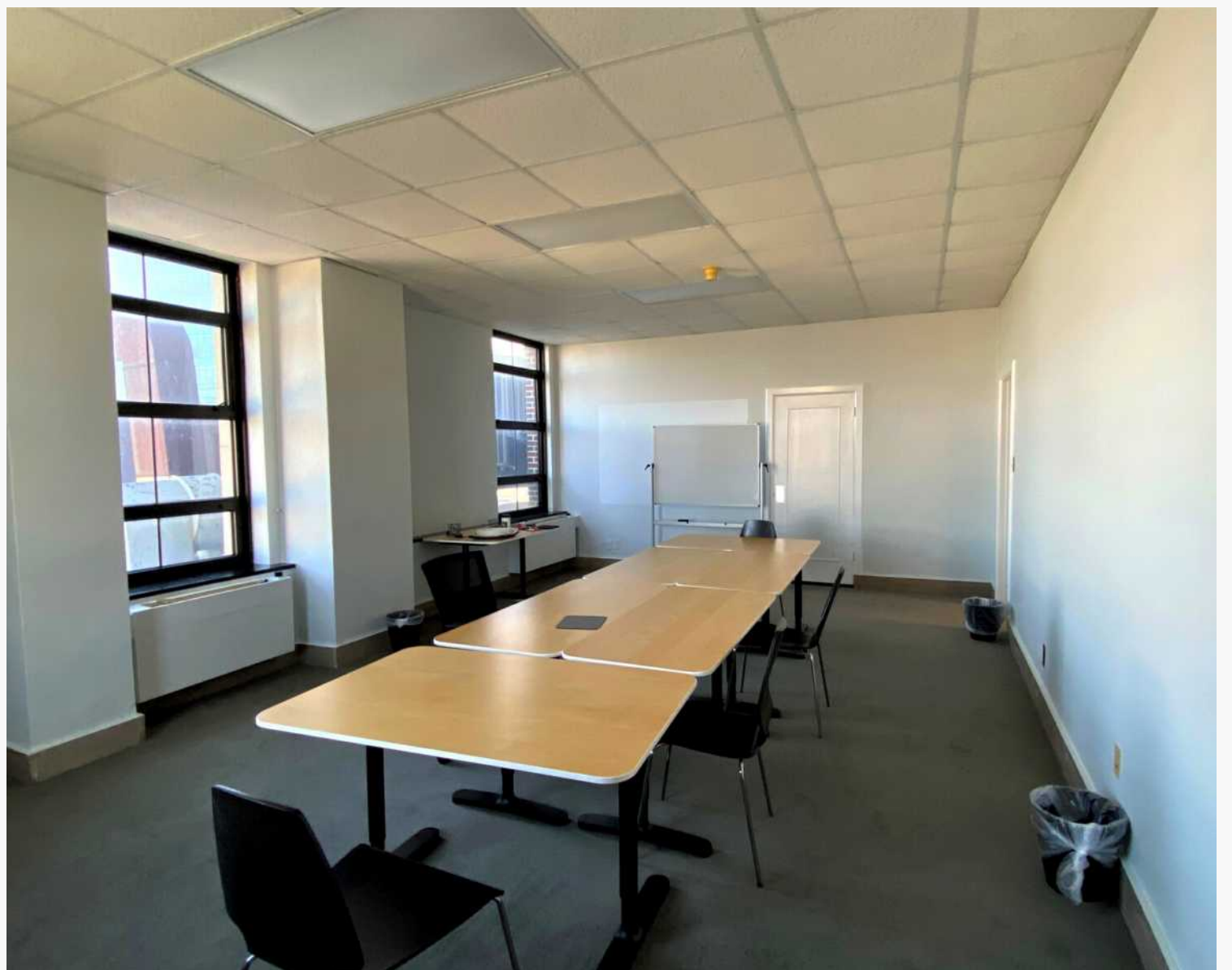
Located on the Great Miami River and minutes from the Central Business District, the building offers amazing views and convenient access to many downtown amenities.

Offering 8 floors, 2 elevators, and 50,000 SF, various suite sizes are available ranging in size from 400 SF - 6,380 SF.

The top floor is directly accessible from the elevator and includes original tile and marble flooring, a beautiful wood paneled corner space, and excellent city and river views.

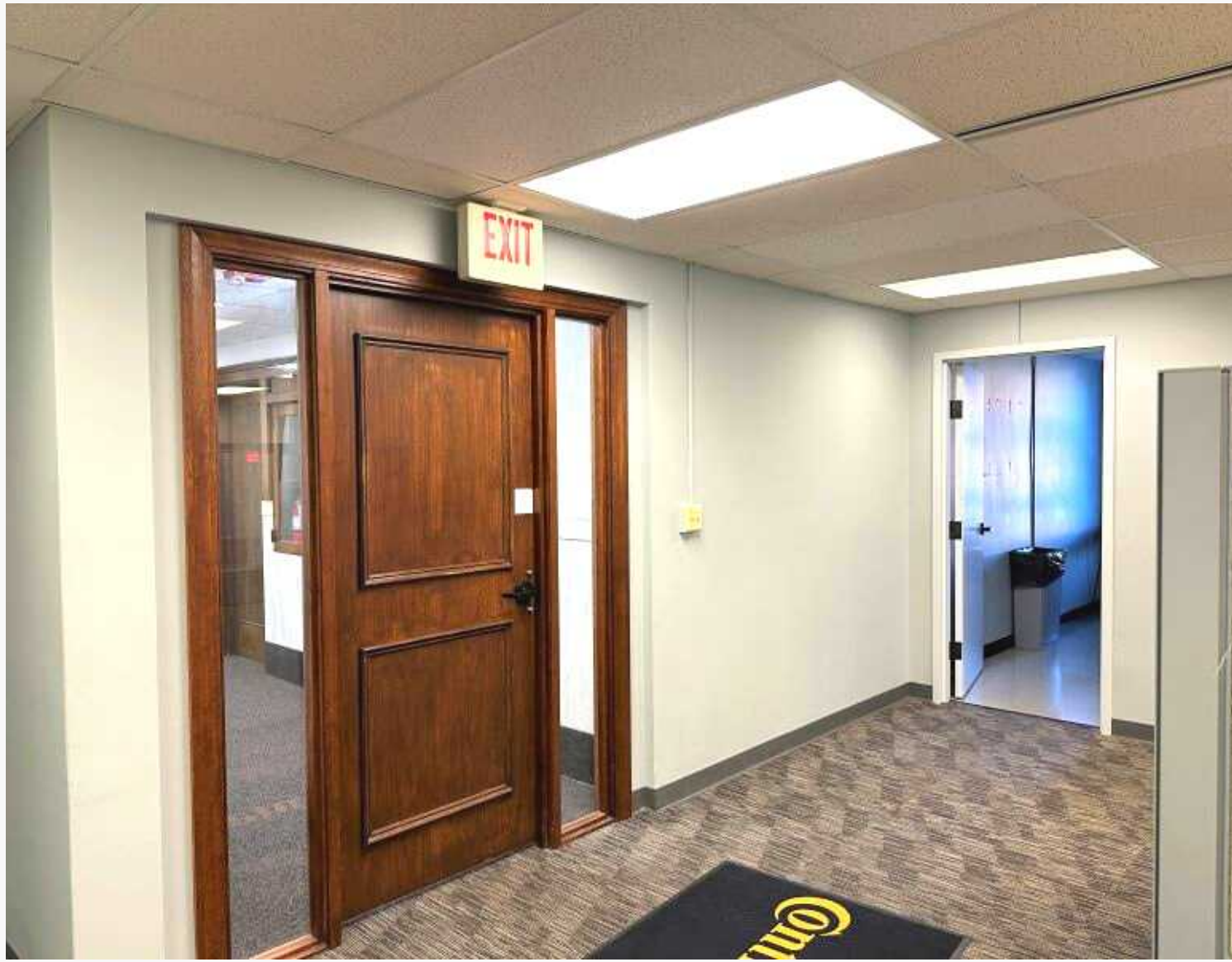
An access card system offers 24-hour secure access to the building. An adjacent surface lot offers parking options. Street parking is available and nearby covered garages offer additional options.

# The Lemberg Co. Building



# The Lemberg Co. Building

Suite 206 ~ 4,312 SF



# The Lemberg Co. Building

Suite 800 ~ 6,380 SF



# Right where you want to be.



Numerous amenities surround the building! Several upscale urban living developments are within walking distance, as well as, a nice variety of downtown restaurants, and entertainment. Downtown is also home to many cultural and arts events just blocks away. Riverscape and the Dayton Dragons' minor league baseball home field add additional outdoor options.

