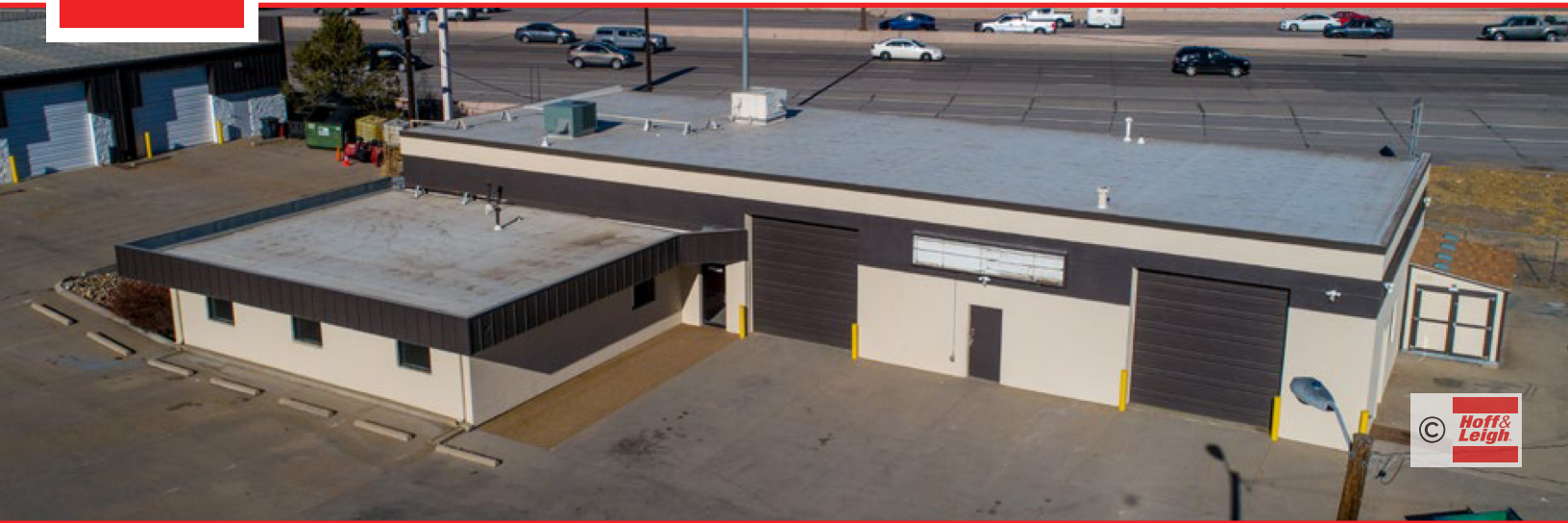


Industrial/Flex Space For Lease

7881 W 48TH AVENUE, WHEAT RIDGE, COLORADO 80033



Overview

Hoff & Leigh is proud to bring you this prime Industrial/Flex stand-alone building at 7881 W 48th Avenue. Located just off I-70 and Wadsworth, this turnkey Industrial/Flex space offers a rare combination of visibility, accessibility, and high-end functionality. Ideal for contractors, service companies, light industrial users, or businesses needing secure yard space and warehouse access.

This property features a full build-out with approximately 1,100 SF of private offices, a welcoming reception, and a private restroom. The attached warehouse features (2) 12' x 12' drive-in doors, heavy power, kitchenette, restroom, and piped air lines throughout. The fenced-in yard provides ample room for outdoor storage, equipment, or fleet vehicles.

To top it all off, 7881 W 48th Avenue also includes monument signage facing I-70!

5,125/SF x \$16.63/SF/YR/NNN + \$6.23/SF/YR/NNN = \$9,764/Month

Zoning Chart:

https://library.municode.com/co/wheat_ridge/codes/code_of_ordinances?nodeId=PTIICOLA_CH26ZODE_ARTIIZODIRE_S26-201ZODI

Highlights

- High Traffic Visibility (I-70 & Wadsworth)
- Fenced Yard (Outdoor Storage Permitted)
- (2) 12' x 12' Drive In Doors
- 3 Phase Power & Compressed Airlines

Property Details



Lease Rate
\$16.63 SF/YR
(NNN)



Building Size
5,125 SF



Space Available
5,125 SF



Zoning
IE



Lot Size
0.57 Acres

CLICK FOR VIRTUAL TOUR

Rev: August 25, 2025

Our Network Is Your Edge

All information is from sources deemed reliable and is subject to errors, omissions, change of price, rental, prior sale, and withdrawal without notice. Prospect should carefully verify each item of information contained herein.



Brandon Langiewicz, SIOR

C: 715.512.0265

O: 720.572.5187

Brandon@HoffLeigh.com



Chris Camozzi

C: 303.328.5611

O: 720.572.5187

CCamozzi@HoffLeigh.com



Industrial/Flex Space For Lease

7881 W 48TH AVENUE, WHEAT RIDGE, COLORADO 80033



Rev: August 25, 2025



Our Network Is Your Edge

All information is from sources deemed reliable and is subject to errors, omissions, change of price, rental, prior sale, and withdrawal without notice. Prospect should carefully verify each item of information contained herein.



Brandon Langiewicz, SIOR

C: 715.512.0265

O: 720.572.5187

Brandon@HoffLeigh.com



Chris Camozzi

C: 303.328.5611

O: 720.572.5187

CCamozzi@HoffLeigh.com



Industrial/Flex Space For Lease

7881 W 48TH AVENUE, WHEAT RIDGE, COLORADO 80033



Rev: August 25, 2025



Our Network Is Your Edge

All information is from sources deemed reliable and is subject to errors, omissions, change of price, rental, prior sale, and withdrawal without notice. Prospect should carefully verify each item of information contained herein.



Brandon Langiewicz, SIOR

C: 715.512.0265

O: 720.572.5187

Brandon@HoffLeigh.com



Chris Camozzi

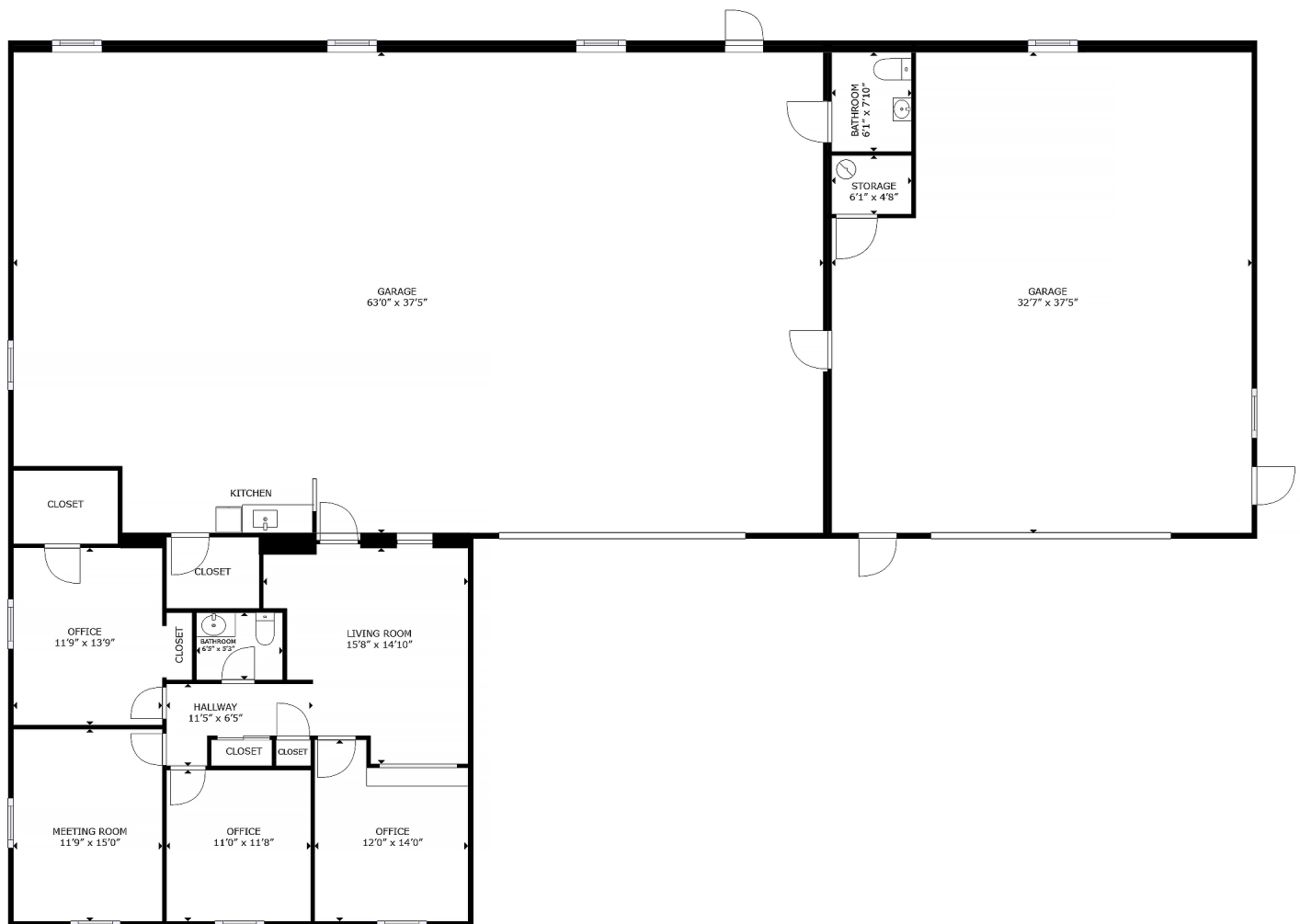
C: 303.328.5611

O: 720.572.5187

CCamozzi@HoffLeigh.com

Industrial/Flex Space For Lease

7881 W 48TH AVENUE, WHEAT RIDGE, COLORADO 80033



FLOOR PLAN

Rev: August 25, 2025

Our Network Is Your Edge

All information is from sources deemed reliable and is subject to errors, omissions, change of price, rental, prior sale, and withdrawal without notice. Prospect should carefully verify each item of information contained herein.



Brandon Langiewicz, SIOR

C: 715.512.0265

O: 720.572.5187

Brandon@HoffLeigh.com



Chris Camozzi

C: 303.328.5611

O: 720.572.5187

CCamozzi@HoffLeigh.com

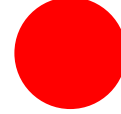
Industrial/Flex Space For Lease

7881 W 48TH AVENUE, WHEAT RIDGE, COLORADO 80033

DEMOGRAPHICS



128,454
Population



39.5

Median Age



2.2
Average
Household Size

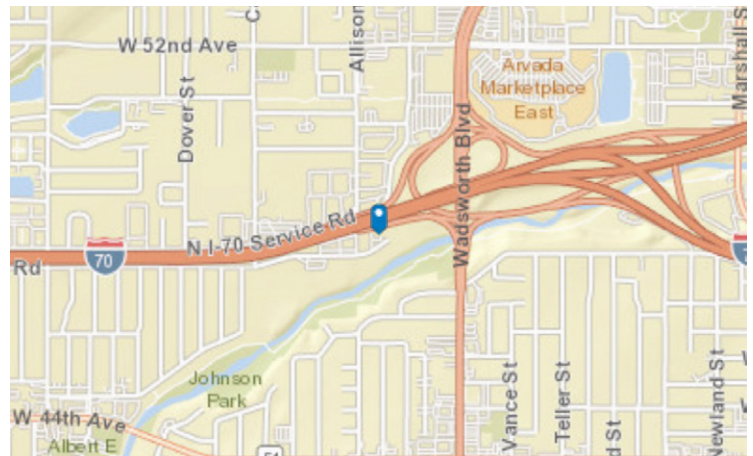


\$97,361

Median Household
Income

TRAFFIC COUNT

Nearest Cross Street	VPD	Distance (mi)
Wadsworth Blvd	100,891	0.0
Wadsworth Blvd	8,327	0.1
I- 70	151,632	0.2
I- 70	151,632	0.2
W 51st Ave	6,807	0.2



Rev: August 25, 2025

Our Network Is Your Edge

All information is from sources deemed reliable and is subject to errors, omissions, change of price, rental, prior sale, and withdrawal without notice. Prospect should carefully verify each item of information contained herein.



Brandon Langiewicz, SIOR

C: 715.512.0265

O: 720.572.5187

Brandon@HoffLeigh.com



Chris Camozzi

C: 303.328.5611

O: 720.572.5187

CCamozzi@HoffLeigh.com



Industrial/Flex Space For Lease

7881 W 48TH AVENUE, WHEAT RIDGE, COLORADO 80033



Rev: August 25, 2025



Our Network Is Your Edge

All information is from sources deemed reliable and is subject to errors, omissions, change of price, rental, prior sale, and withdrawal without notice. Prospect should carefully verify each item of information contained herein.



Brandon Langiewicz, SIOR

C: 715.512.0265

O: 720.572.5187

Brandon@HoffLeigh.com



Chris Camozzi

C: 303.328.5611

O: 720.572.5187

CCamozzi@HoffLeigh.com