

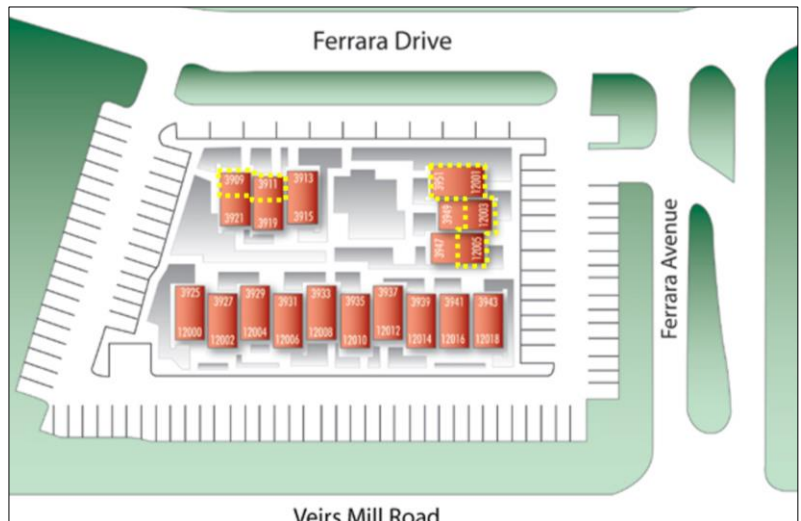
AVAILABLE FOR LEASE

CONNECTICUT BELAIR MEDICAL PARK

12000-12018 Veirs Mill Road & 3909-3951 Ferrara Drive
Silver Spring, Maryland 20906



Located on the corner of Veirs Mill Road and Ferrara Avenue, one block north of Connecticut Avenue.



For more details or to arrange a tour please contact:

301.961.9696

Sam Farnum

Ext. 216

sfarnum@amrcommercial.com

Bill Montrose

Ext. 203

wmontrose@amrcommercial.com

Although all information furnished is from sources we deem reliable, such information has not been verified and no express representation is made nor is any to be implied as to the accuracy thereof, and it is submitted subject to errors, omissions, or other conditions.

AVAILABLE BUILT-OUT MEDICAL SUITES:

12001 Veirs Mill Rd.
2,100 Square Feet

3909 Ferrara Dr.
1,400 Square Feet

3951 Ferrara Dr.
615 Square Feet

**\$26.00 per S.F. Plus
Electric & Janitorial**

Ideal Location:

Convenient to residential communities in Rockville, Wheaton, Kensington, Chevy Chase, Bethesda, and Silver Spring.

Close Proximity to:

Holy Cross Hospital, Kaiser Permanente Kensington Medical Center, and Suburban Hospital.

Present Specialties:

Family Medicine, Internal Medicine, Pediatrics, Gastroenterology, Nephrology, Oncology, Hematology, Dermatology, Audiology, General Dentistry, Clinical Laboratory, and Orthodontics.



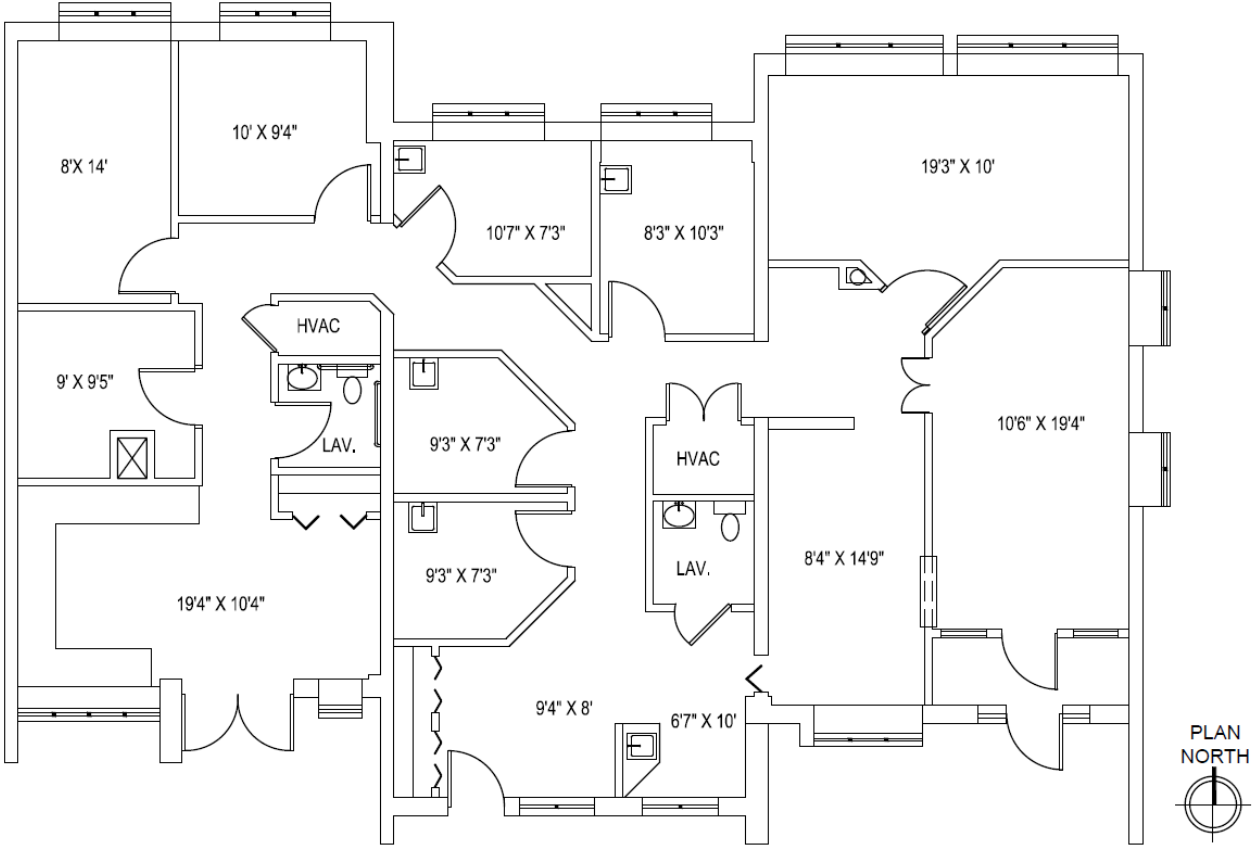
ALEXANDER, MONTROSE, RITTENBERG
Commercial Real Estate Brokerage
Est. 1994

Celebrating
30
Years
1994-2024

A Member of **CORE**
NETWORK

4849 Rugby Avenue ♦ Suite 200 ♦ Bethesda, Maryland 20814 ♦ 301.961.9696 ♦ Fax 301.656.7551 ♦ www.amrcommercial.com

12001 Veirs Mill Road 2,100 S.F.



NOT TO SCALE | MEASUREMENTS APPROXIMATE

Although all information furnished is from sources we deem reliable, such information has not been verified and no express representation is made nor is any to be implied as to the accuracy thereof, and it is submitted subject to errors, omissions, or other conditions.



ALEXANDER, MONTROSE, RITTENBERG
Commercial Real Estate Brokerage
Est. 1994

Celebrating
30
Years
1994-2024

A Member of **CORE**
NETWORK

3909 Ferrara Drive 1,400 S.F.



NOT TO SCALE | MEASUREMENTS APPROXIMATE

Although all information furnished is from sources we deem reliable, such information has not been verified and no express representation is made nor is any to be implied as to the accuracy thereof, and it is submitted subject to errors, omissions, or other conditions.



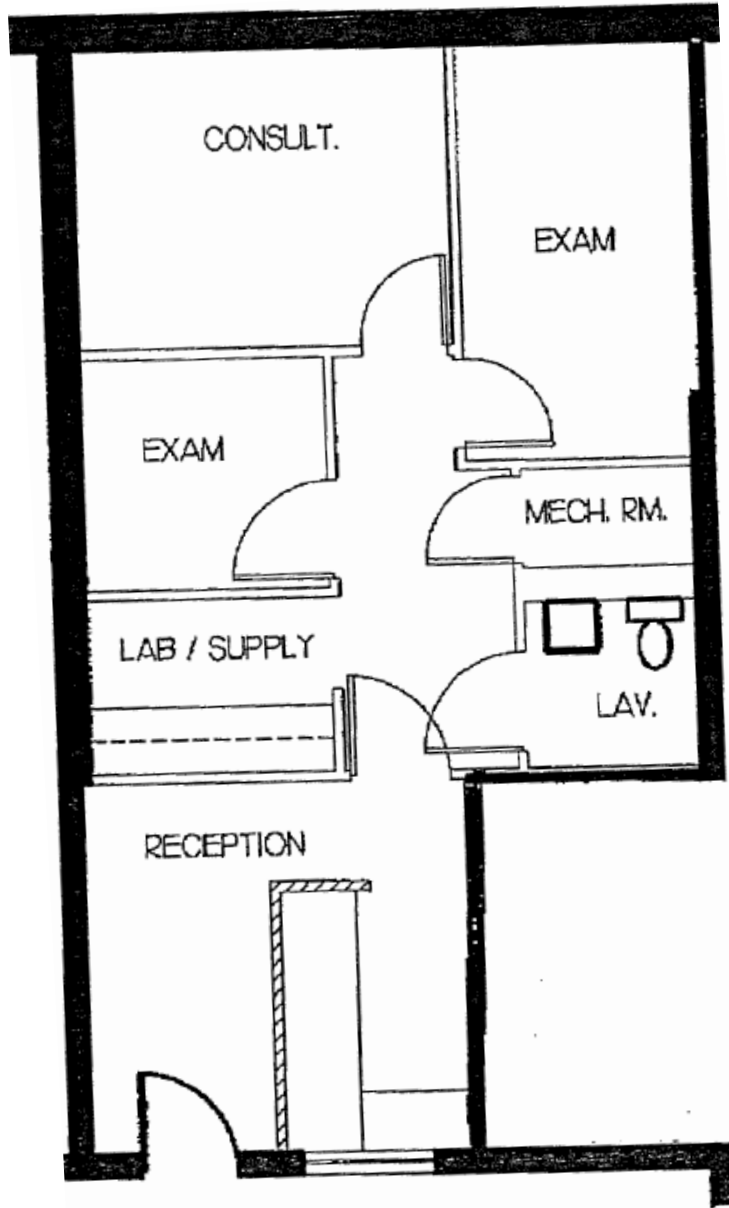
ALEXANDER, MONTROSE, RITTENBERG
Commercial Real Estate Brokerage
Est. 1994

Celebrating
30
Years
1994-2024

A Member of **CORE**
NETWORK

4849 Rugby Avenue ♦ Suite 200 ♦ Bethesda, Maryland 20814 ♦ 301.961.9696 ♦ Fax 301.656.7551 ♦ www.amrcommercial.com

3951 Ferrara Drive
615 S.F.



NOT TO SCALE | MEASUREMENTS APPROXIMATE

Although all information furnished is from sources we deem reliable, such information has not been verified and no express representation is made nor is any to be implied as to the accuracy thereof, and it is submitted subject to errors, omissions, or other conditions.



ALEXANDER, MONTROSE, RITTENBERG
Commercial Real Estate Brokerage
Est. 1994

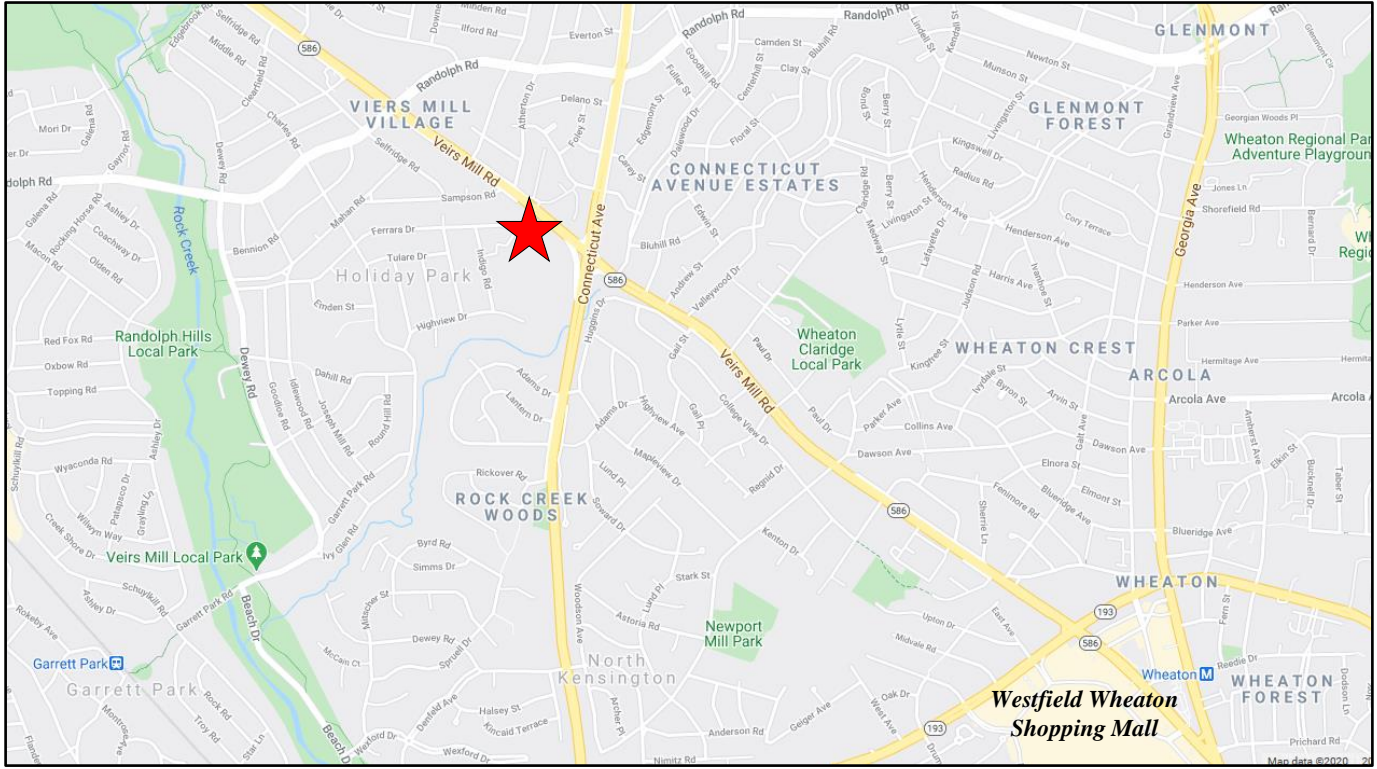
Celebrating
30
Years
1994-2024

A Member of **CORE**
NETWORK

CONNECTICUT BELAIR MEDICAL PARK

12000-12018 Veirs Mill Road & 3909-3951 Ferrara Drive

Silver Spring, Maryland 20906



Although all information furnished is from sources we deem reliable, such information has not been verified and no express representation is made nor is any to be implied as to the accuracy thereof, and it is submitted subject to errors, omissions, or other conditions.



ALEXANDER, MONTROSE, RITTENBERG
Commercial Real Estate Brokerage
Est. 1994

Celebrating
30
Years
1994-2024

A Member of **CORE**
NETWORK

4849 Rugby Avenue ♦ Suite 200 ♦ Bethesda, Maryland 20814 ♦ 301.961.9696 ♦ Fax 301.656.7551 ♦ www.amrcommercial.com