

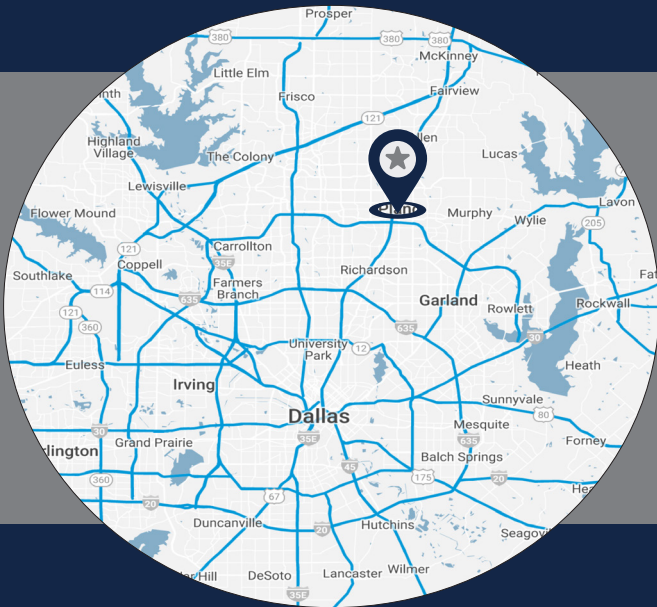
FOR LEASE

811



PARKWAY SQUARE

811 E PLANO PARKWAY | PLANO, TX 75074



LISTING HIGHLIGHTS

| | |
|--------------------|--|
| ADDRESS: | 811 E Plano Parkway |
| AVAILABLE SF: | +/- 45,635 SF |
| YEAR BUILT: | 1983 |
| CLEAR HEIGHT: | 16' |
| GRADE LEVEL DOORS: | Yes |
| PARKING: | 1.98/1,000 SF |
| NOTES: | <ul style="list-style-type: none">• One story brick office/showroom• Easy access to Central Expressway & George Bush Turnpike |

FOR LEASING INFORMATION:

Jessica Reinhardt

jreinhardt@lee-associates.com
972.934.4005
972.891.5236

Susan Cancemi

scancemi@lee-associates.com
972.934.4005
469.236.3386

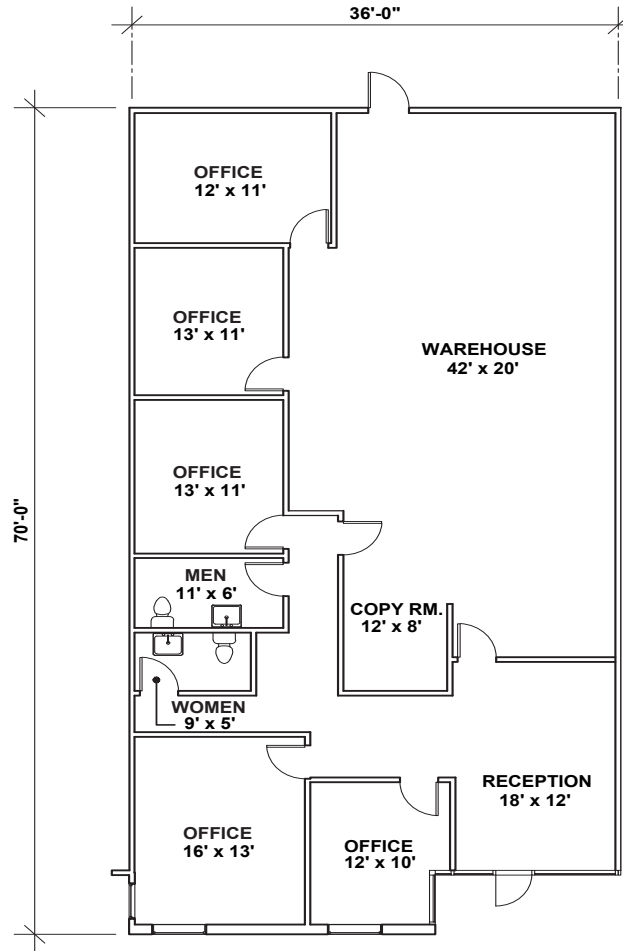
OWNED BY:



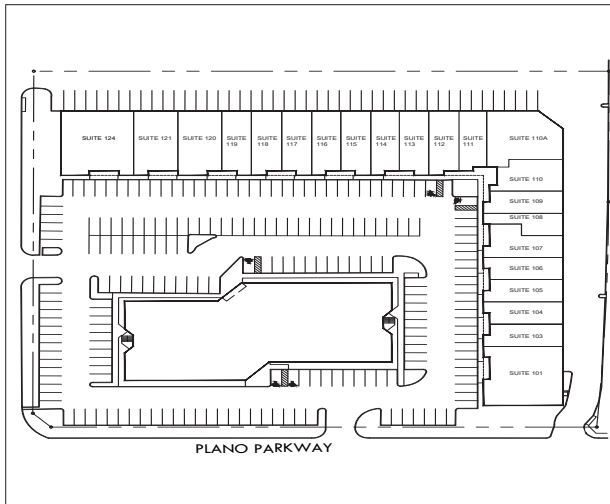
LEASED BY:



STE 120
2,520 SF



SITE PLAN



AERIAL



All information furnished regarding property for sale, rental or financing is from sources deemed reliable, but no warranty or representation is made to the accuracy thereof and same is submitted to errors, omissions, change of price, rental or other conditions prior to sale, lease or financing or withdrawal without notice. No liability of any kind is to be imposed on the broker herein.

Jessica Reinhardt
jreinhardt@lee-associates.com
972.934.4005
972.891.5236

Susan Cancemi
scancemi@lee-associates.com
972.934.4005
469.236.3386

OWNED BY:



LEASED BY:

