

19,960+/- Sq. Ft. Office/Flex Building

200 Enchanted Parkway
Ballwin, MO 63021



For Sale or Lease

Sale Price

\$2,100,000.00

Lease Price

\$10.00/sq. Ft. NNN

Contact

Paul Redel

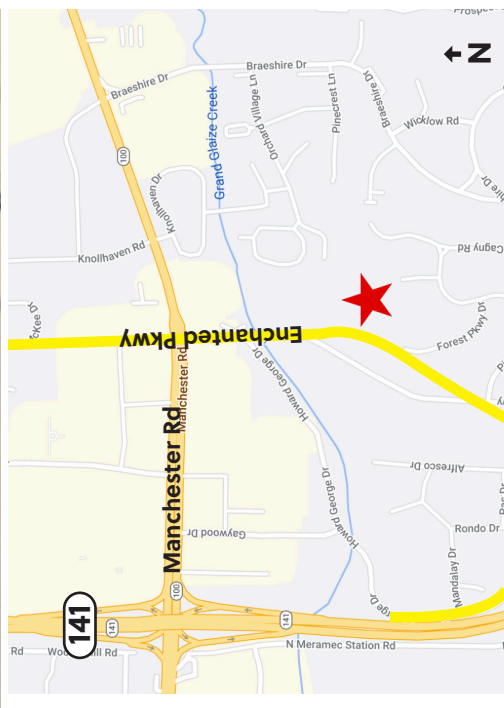
predel@hillikercorp.com

Hal Ball, SIOR

hball@hillikercorp.com

Features

- Former Racquetball Facility - Renovated for Office/Flex Use
- Portions with High Ceilings
- Drive-in Door in Rear
- Fantastic location East of Manchester & 141
- Potential for Multi-Tenant
- Large 50+ Car Parking Lot
- 1.35 Acre Site



Hilliker Corporation | www.hillikercorp.com | 314-781-0001 | 1401 S. Brentwood Blvd. Suite 650, St. Louis, MO 63144

Information is from appropriate sources but is not guaranteed. No representation is made to environmental or other conditions of property. We recommend purchaser investigate fully. Individual Membership in the Society of Industrial and Office Realtors.

HILLIKER
CORPORATION



19,960+/- Sq. Ft. Office/Flex Building

200 Enchanted Parkway
Ballwin, MO 63021



Hilliker Corporation | www.hillikercorp.com | 314-781-0001 | 1401 S. Brentwood Blvd. Suite 650, St. Louis, MO 63144

Information is from appropriate sources but is not guaranteed. No representation is made to environmental or other conditions of property. We recommend purchaser investigate fully. Individual Membership in the Society of Industrial and Office Realtors.



19,960+/- Sq. Ft. Office/Flex Building

200 Enchanted Parkway
Ballwin, MO 63021

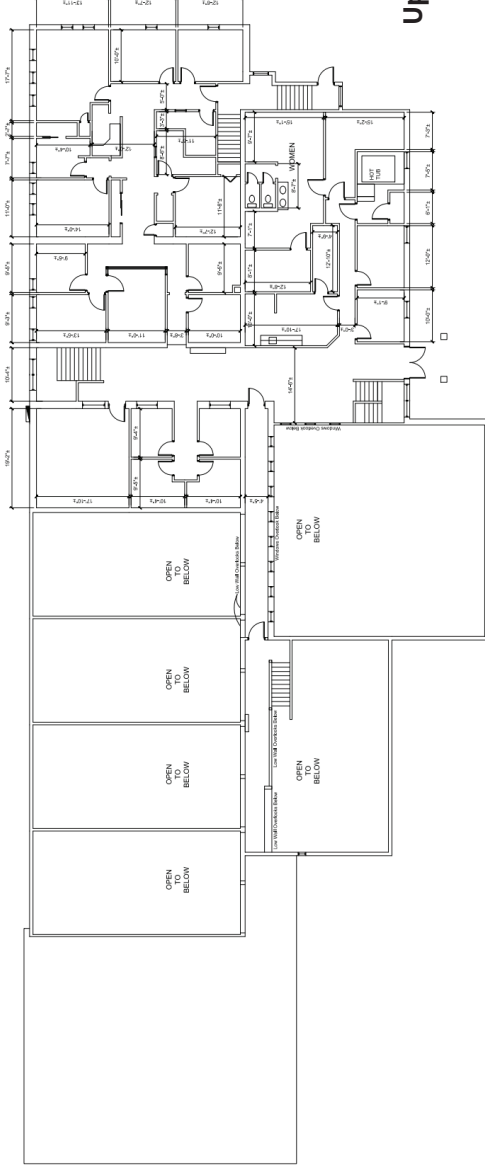


Hilliker Corporation | www.hillikercorp.com | 314-781-0001 | 1401 S. Brentwood Blvd. Suite 650, St. Louis, MO 63144

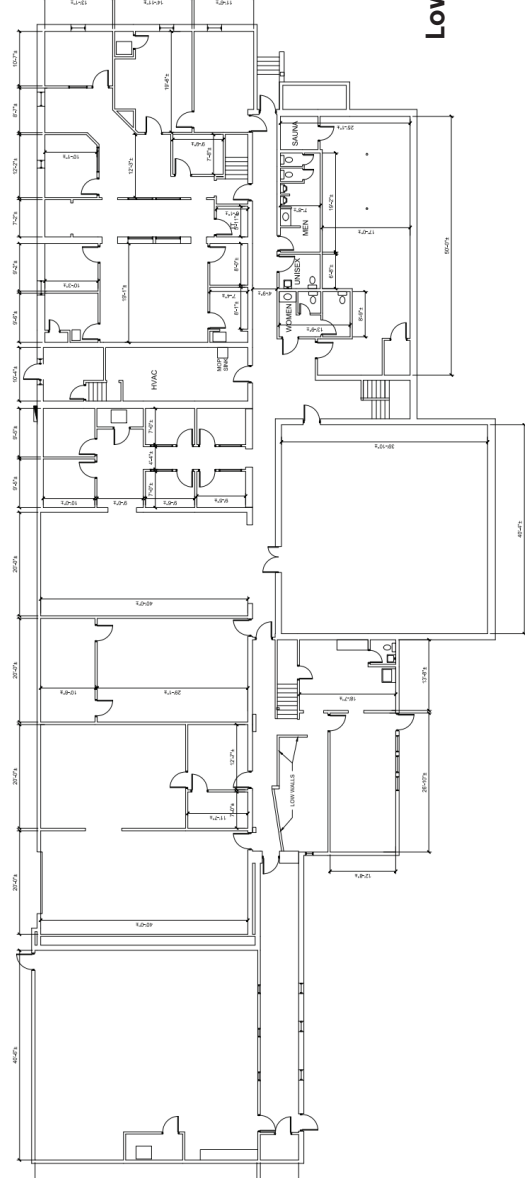
Information is from appropriate sources but is not guaranteed. No representation is made to environmental or other conditions of property. We recommend purchaser investigate fully. Individual Membership in the Society of Industrial and Office Realtors.



19,960+/- Sq. Ft. Office/Flex Building



Upper Level



Lower Level



Hilliker Corporation | www.hillikercorp.com | 314-781-0001 | 1401 S. Brentwood Blvd. Suite 650, St. Louis, MO 63144

Information is from appropriate sources but is not guaranteed. No representation is made to environmental or other conditions of property. We recommend purchaser investigate fully. Individual Membership in the Society of Industrial and Office Realtors.

