



Office Building

2401-2409 Regency Road, Lexington, KY 40503

Property Highlights

- +/-25,000 SF office building
- +/-1,820 SF remaining for lease
- Strategically located in south Lexington on Regency Road and Pasadena Drive, just off Nicholasville Road
- Close proximity to banks, restaurants and shopping
- New Circle Road, the Blue Grass Airport and downtown Lexington are just minutes away
- Rental Rate: \$13.50 PSF Modified Gross

Spaces

Suite 301

Lease Rate

\$13.50 SF/yr

Space Size

1,820 SF

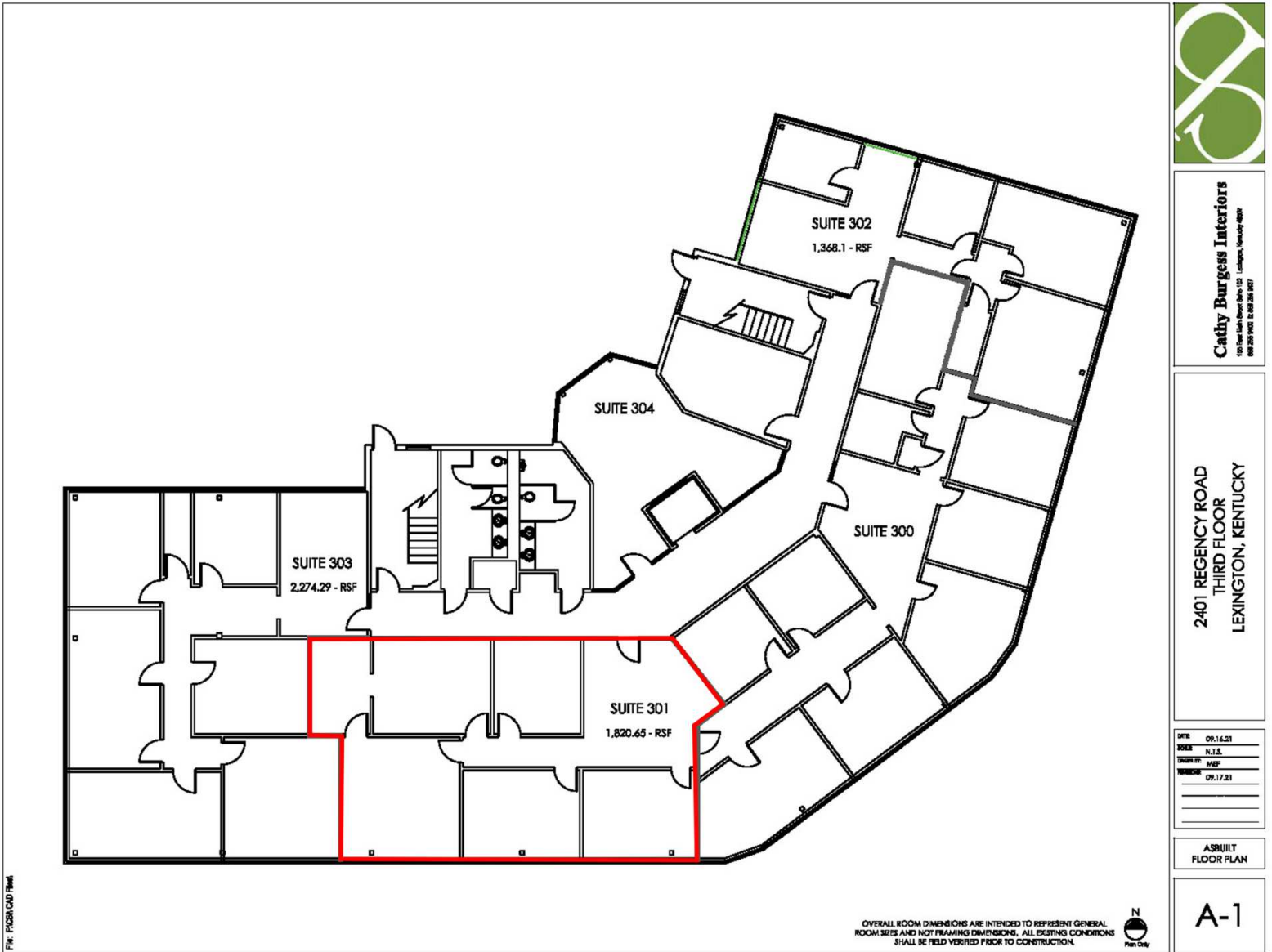
For More Information

Jim Holbrook

Assistant Vice President

O: 859 422 4415

jholbrook@naisaac.com | KY #211630



Cathy Burgess Interiors
100 New Park Lane, Suite 102 | Lexington, Kentucky 40502
858.220.2000 | CB@cbi.com

2401 REGENCY ROAD
THIRD FLOOR
LEXINGTON, KENTUCKY

DATE	09.14.21
SCALE	N.T.S.
DATE OF MAP	09.17.21

ASBUILT FLOOR PLAN

A-1

NO WARRANTY OR REPRESENTATION, EXPRESS OR IMPLIED, IS MADE AS TO THE ACCURACY OF THE INFORMATION CONTAINED HEREIN, AND THE SAME IS SUBMITTED SUBJECT TO ERRORS, OMISSIONS, CHANGE OF PRICE, RENTAL OR OTHER CONDITIONS, PRIOR SALE, LEASE OR FINANCING, OR WITHDRAWAL WITHOUT NOTICE, AND OF ANY SPECIAL LISTING CONDITIONS IMPOSED BY OUR PRINCIPALS NO WARRANTIES OR REPRESENTATIONS ARE MADE AS TO THE CONDITION OF THE PROPERTY OR ANY HAZARDS CONTAINED THEREIN ARE ANY TO BE IMPLIED.