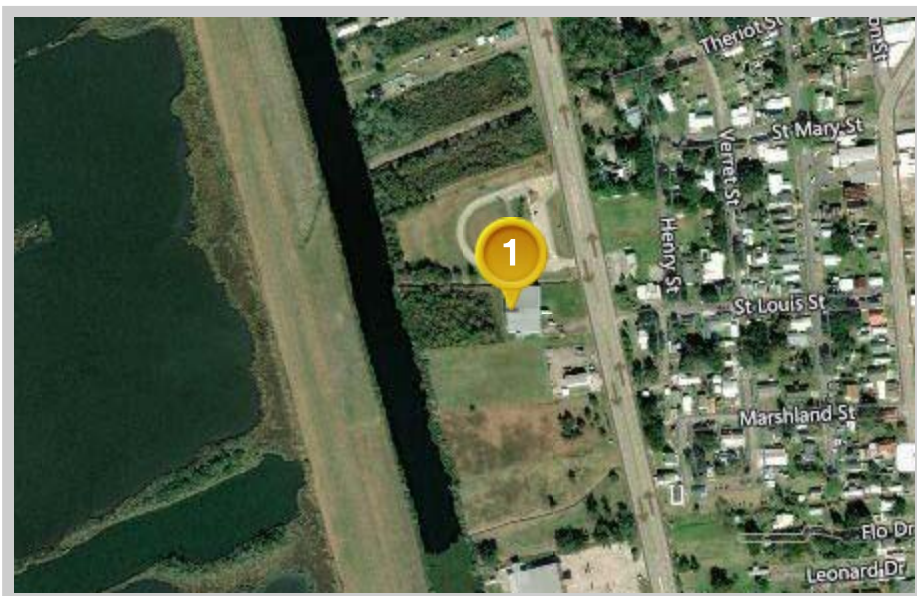


Louisiana Flood Map

1841 S Alex Plaisance, Golden Meadow



Visible Layers

Preliminary FIRM

Bing Hybrid

Point Coordinates

| Point # | Lat., Long. |
|---------|-------------------|
| 1 | 29.3787, -90.2641 |

Flood information in this table is from the: █ Preliminary FIRM

| Point | Panel ID | Flood Zone | BFE | Ground Elevation | Wind Speed* |
|-------|--------------------------|------------|-----|-----------------------------|-------------|
| 1 | 22057C0645E 7/30/2008 | AE, EL 13 | 13 | USGS Service Not Responding | 159 mph |

- Ground Elevation** is provided by USGS's elevation web service which provides the best available data for the specified point. If unable to find elevation at the specified point, the service returns an extremely large, negative value (-1.79769313486231E+308).
- LRC** (Louisiana Residential Code) Wind Speed as of February 1, 2018 is provided by Applied Technology Council's Wind Speed Service. This "Ultimate Design Wind Speed" must be used with the 2015 and later versions of the International Residential Code. See wind speed maps (<http://maps.lsuagcenter.com/windspeed/>) for earlier standards and applicable code versions.

Floodplain data that is shown on this map is the same data that your flood plain administrator uses. This web product is not considered an official FEMA Digital Flood Insurance Rate Map (DFIRM). It is provided for information purposes only, and it is not intended for insurance rating purposes. Please contact your local floodplain administrator for more information or to view an official copy of the FIRM or DFIRM.