

WHERE CREATIVITY
COMES TO THRIVE

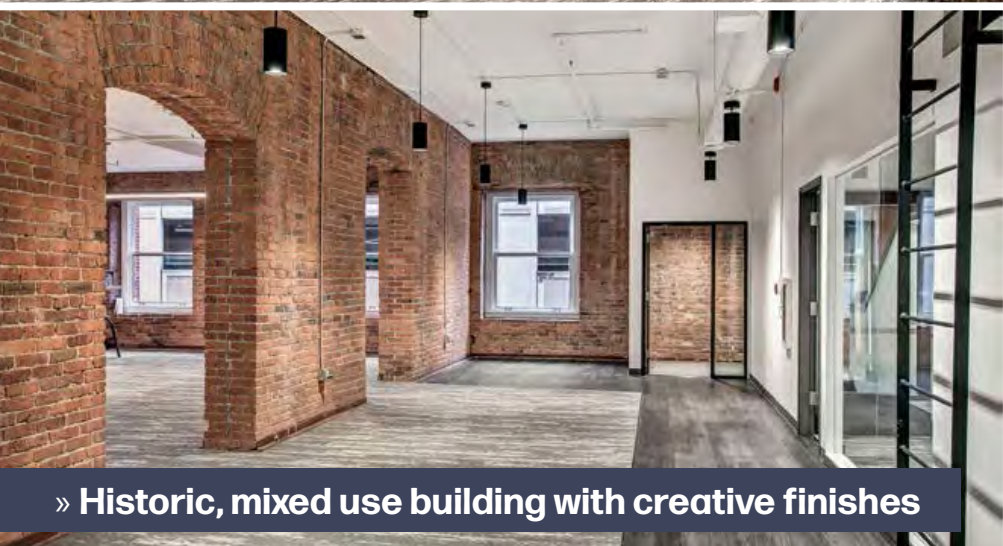


THE
COLONIAL
AT SENECA STEPS

1113 - 1123 FIRST AVENUE | SEATTLE, WASHINGTON



CUSHMAN &
WAKEFIELD



» Historic, mixed use building with creative finishes



BUILDING HIGHLIGHTS



Adjacent to Harbor Steps & Post Alley
Steps away from Seattle's waterfront



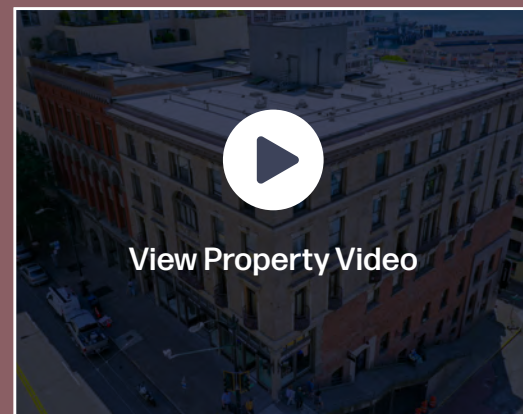
Ample parking available nearby



Newly renovated building



[View Property Video](#)





SEATTLE'S NEW WATERFRONT

JUST STEPS AWAY

The Waterfront Seattle Program began as a community vision to remove the Alaskan Way Viaduct and reconnect the city to its waterfront. The project started construction in 2020 and is anticipated to deliver the final phases in 2025.

\$1.07B redevelopment project
\$400M annual business revenue
8-12M projected annual visitors



CURRENT AVAILABILITIES

SPACE SUITE 1114

5,178 RSF

- » Fully spec suite
- » Post Avenue entrance
- » Blade signage available
- » In-suite shower and restrooms

[VIEW VIRTUAL TOUR OF SUITE 1114](#)

SPACE SUITE 1120

OPTION A: 14,182 RSF
OPTION B: 6,912 RSF
OPTION C: 7,270 RSF

- » Full spec suite
- » Divisible to 6,912 SF
- » Access via Private Entrance
- » Immediate occupancy
- » Showers in suite

[VIEW VIRTUAL TOUR OF SUITE 1120](#)



SUITE 1114



SUITE 1120



SUITE 1114

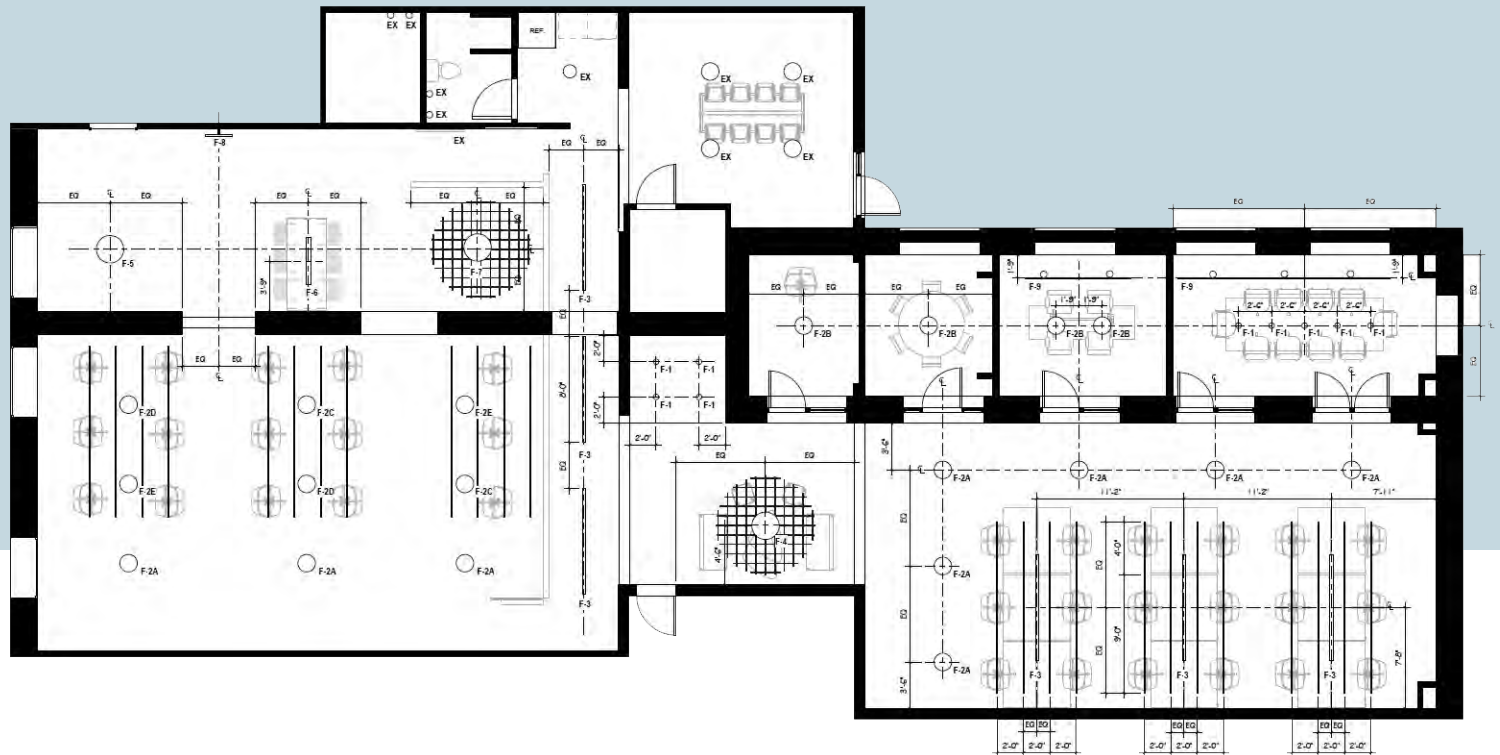
\$25.00/SF, FULL SERVICE

SPACE
SUITE 1114

5,178 RSF

- » Full Spec Suite
- » Post Avenue entrance
- » Blade signage available
- » In-suite shower and restrooms

VIRTUAL TOUR



SPACE SUITE 1120

OPTION A: 14,182 RSF

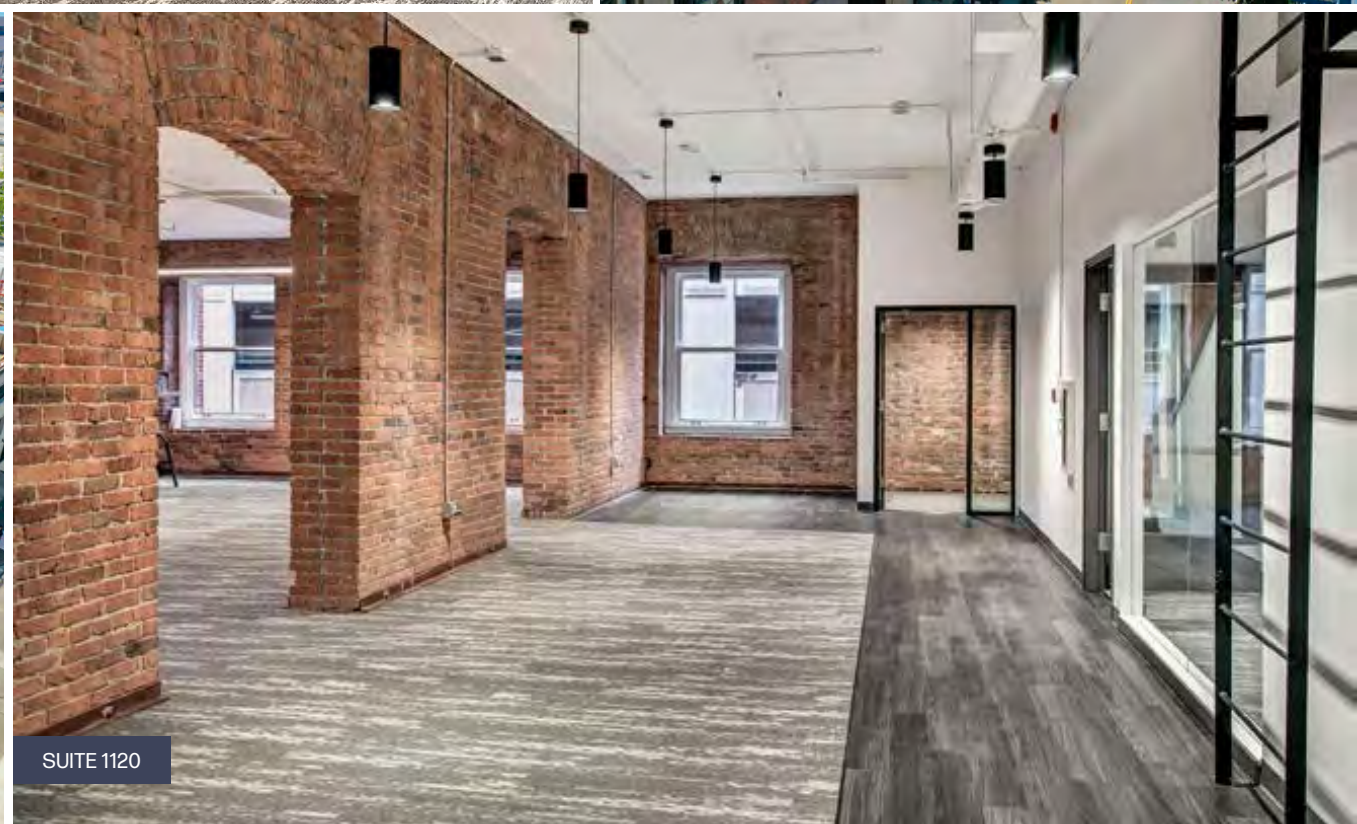
OPTION B: 6,912 RSF

OPTION C: 7,270 RSF

- » Full Spec Suite
- » Divisible to 6,912 SF
- » Access via Private Entrance
- » Immediate occupancy
- » Showers in suite

VIRTUAL TOUR





ATTRACTIONS

- 1 Lumen Field
- 2 Seattle Aquarium
- 3 Seattle Art Museum
- 4 Seattle Public Library
- 5 Sky View Observatory
- 6 Smith Tower
- 7 Space Needle
- 8 The Great Wheel
- 9 T-Mobile Park

LODGING

- 10 Fairmont Olympic Hotel
- 11 Grand Hyatt Seattle
- 12 Hotel Monaco
- 13 Hyatt at Olive 8
- 14 Seattle Marriott Waterfront
- 15 Sheraton Grand Seattle
- 16 The Four Seasons
- 17 The Motif
- 18 The Westin

RESTAURANTS

- 19 Anthony's on Pier 66
- 20 Bai Tong Thai
- 21 Bateau
- 22 Cafe Campagne
- 23 Elliott's Oyster House
- 24 Hard Rock Cafe
- 25 HoneyHole Sandwiches
- 26 Ivar's Acres of Clams
- 27 Jerk Shack
- 28 Matt's In The Market
- 29 MBar
- 30 Metropolitan Grill
- 31 Pike Place Chowder
- 32 Rhein Haus
- 33 Wild Ginger

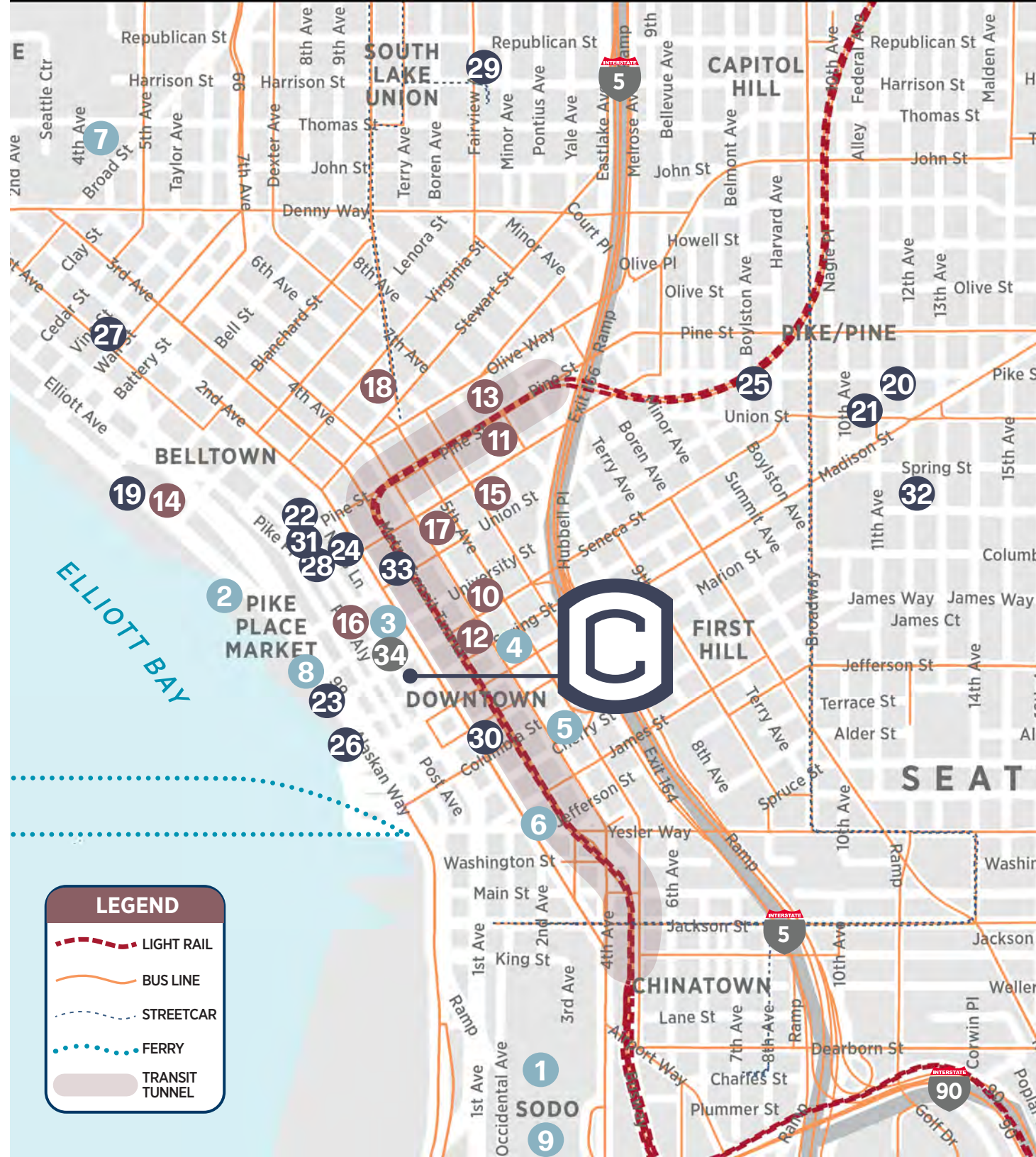
HARBOR STEPS

- 34 Harbor Steps

skillet



- Amazon Store
- Mason's Lobster Rolls
- Cassina
- Linge Roset
- Taqueria Cantina
- Starbucks Reserve
- Vons
- Dogtopia



LEGEND

- LIGHT RAIL
- BUS LINE
- STREETCAR
- FERRY
- TRANSIT TUNNEL



BRANDON BURMEISTER

Senior Director

+1 206 215 9702

brandon.burmeister@cushwake.com

LEAH MASSON

Senior Director

+1 206 215 9803

leah.masson@cushwake.com

©2025 Cushman & Wakefield. All rights reserved. The information contained in this communication is strictly confidential. This information has been obtained from sources believed to be reliable but has not been verified. NO WARRANTY OR REPRESENTATION, EXPRESS OR IMPLIED, IS MADE AS TO THE CONDITION OF THE PROPERTY (OR PROPERTIES) REFERENCED HEREIN OR AS TO THE ACCURACY OR COMPLETENESS OF THE INFORMATION CONTAINED HEREIN, AND SAME IS SUBMITTED SUBJECT TO ERRORS, OMISSIONS, CHANGE OF PRICE, RENTAL OR OTHER CONDITIONS, WITHDRAWAL WITHOUT NOTICE, AND TO ANY SPECIAL LISTING CONDITIONS IMPOSED BY THE PROPERTY OWNER(S). ANY PROJECTIONS, OPINIONS OR ESTIMATES ARE SUBJECT TO UNCERTAINTY AND DO NOT SIGNIFY CURRENT OR FUTURE PROPERTY PERFORMANCE. COE-PM-WEST- 08/18/25

1113 - 1123 FIRST AVENUE | SEATTLE, WASHINGTON