

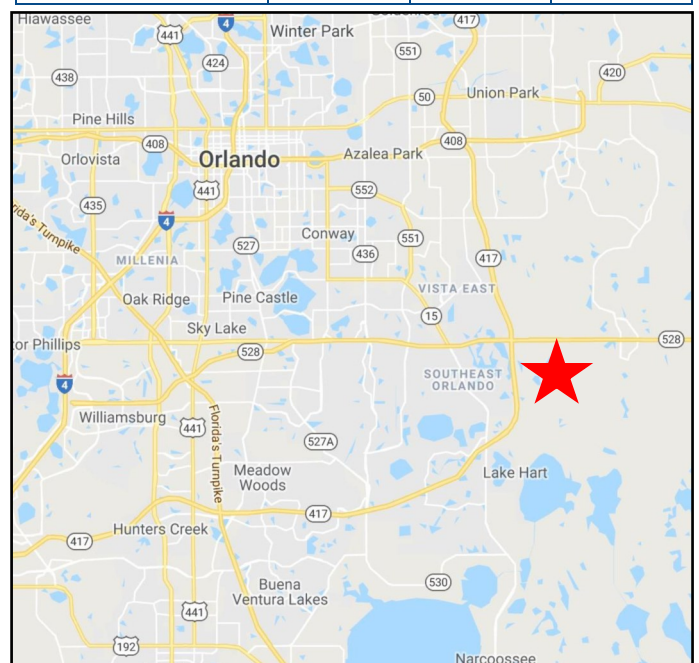
STOREY PARK - ORLANDO, FL

LAND FOR SALE— 11122 LITERATURE WAY

Orlando, FL 32832



- Affluent High Growth Market
- Near the 417 bypass & Orlando Health Hospital, New Publix Shopping Center
- 1.26 Acres For Sale
- Perfect for Daycare, Commercial, or office uses.
- Parcel is located at the main entrance of Storey Park



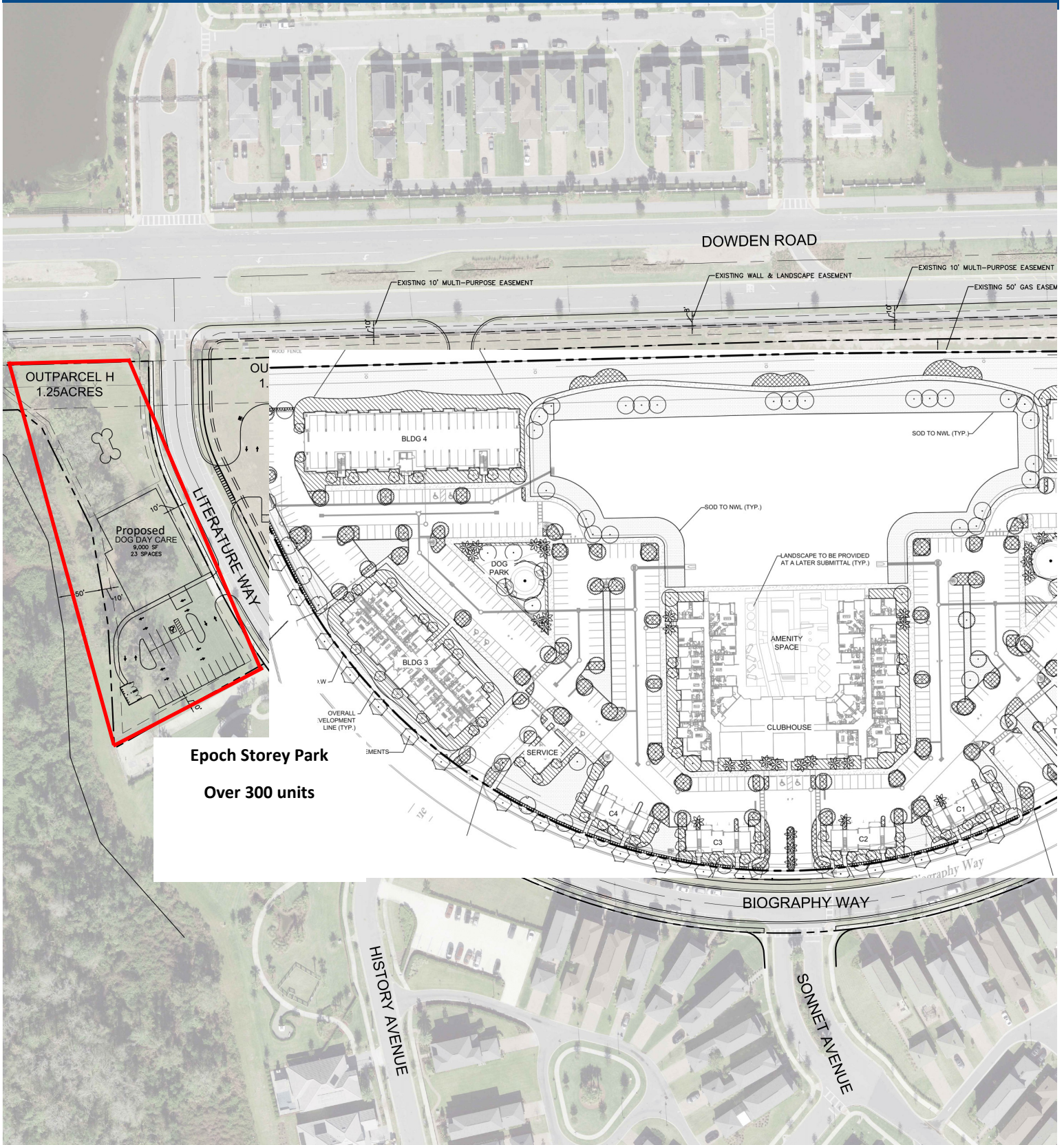
Heather Coons
 305-283-1521
 heather@blurockcommercial.com

3408 South Orange Ave.
 Suite B
 Orlando, FL 32806
 www.blurockcommercial.com

STOREY PARK - ORLANDO, FL

LAND FOR SALE— 11122 LITERATURE WAY

Orlando, FL 32832



Epoch Storey Park
Over 300 units



Heather Coons
305-283-1521
heather@blurockcommercial.com

3408 South Orange Ave.
Suite B
Orlando, FL 32806
www.blurockcommercial.com