

# 1320 PARKWAY

1320 Parkway Ave | Ewing, NJ 08628

*For Lease*



## *Property Overview*

*Available*  
8,340 SF

*Surrounding Retailers*

1320 Parkway is adjacent to Suburban Square which is an upscale strip mall has an eclectic mixture of retail tenants including: CVS, Captain Laundry, LA Perfection Nails, Villa Rosa Restaurant, and Five Guys. Also, adjacent to many incoming residential developments.



1000 Germantown Pike, Suite A-2 | Plymouth Meeting, PA 19462 | [www.PennmarkProperties.com](http://www.PennmarkProperties.com) | 610-272-6500 x126

The following materials provided have been obtained from sources believed reliable. Pennmark Management Company, INC. has not verified, and makes no guarantee, warranty or representation about the information presented. Any projections, assumptions or estimates used, are for example only, and do not represent the current or future performance of the property.

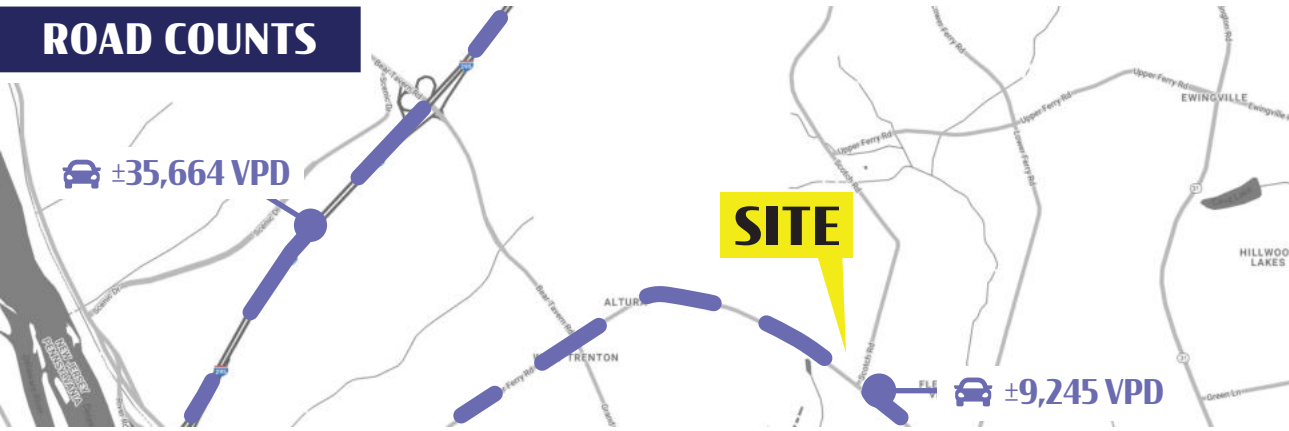


# 1320 PARKWAY

1320 Parkway Ave | Ewing, NJ 08628

*For Lease*

## ROAD COUNTS



DEMOGRAPHICS	1 MILE	5 MILE	10 MILE
TOTAL POPULATION	6,556	204,802	537,061
TOTAL EMPLOYEES	5,720	99,148	267,936
AVERAGE HHI	\$81,893	\$106,597	\$122,745
TOTAL HOUSEHOLDS	2,736	73,648	197,991



1000 Germantown Pike, Suite A-2 | Plymouth Meeting, PA 19462 | [www.PennmarkProperties.com](http://www.PennmarkProperties.com) | 610-272-6500 x126

The following materials provided have been obtained from sources believed reliable. Pennmark Management Company, INC. has not verified, and makes no guarantee, warranty or representation about the information presented. Any projections, assumptions or estimates used, are for example only, and do not represent the current or future performance of the property.



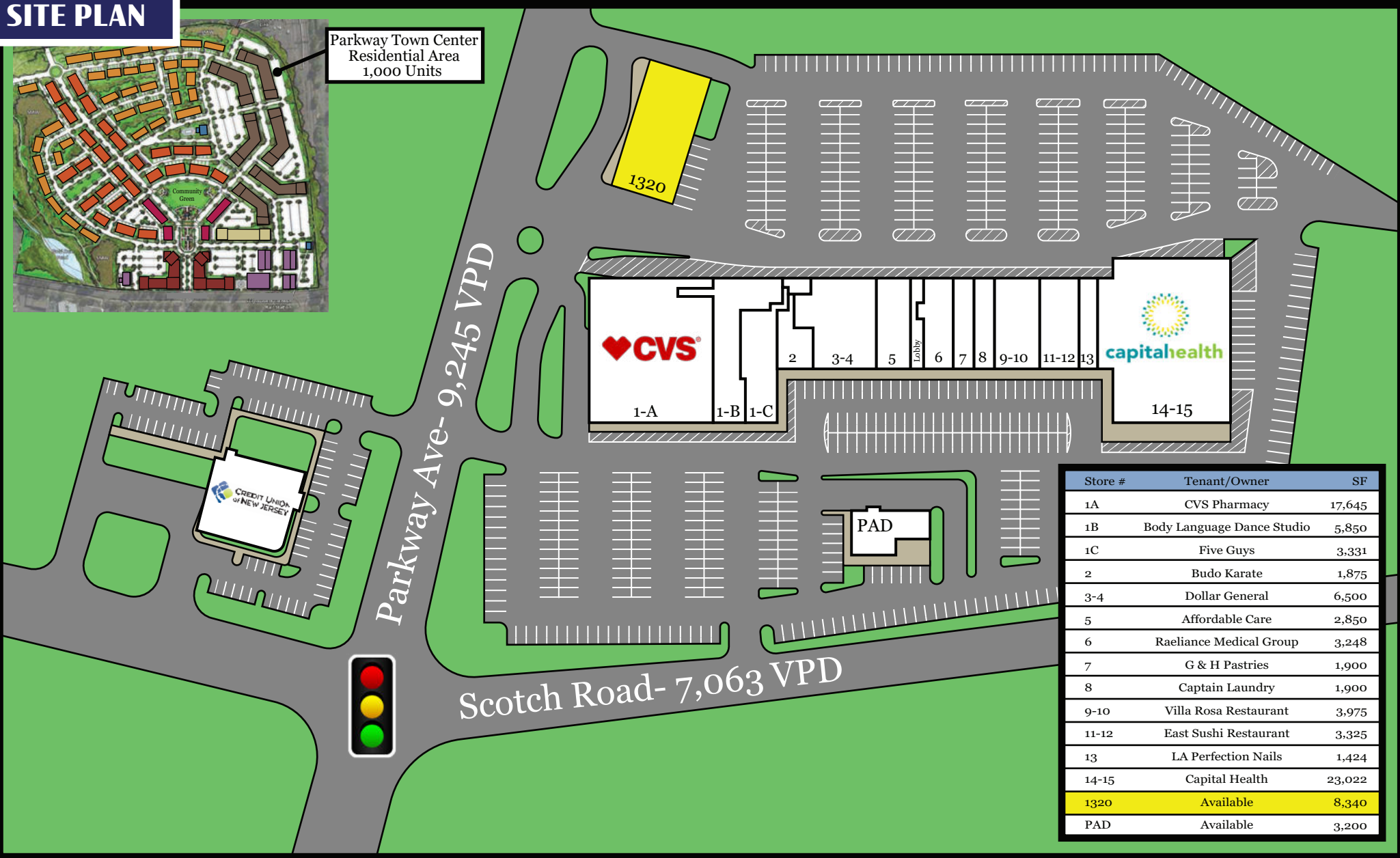
# 1320 PARKWAY

1320 Parkway Ave | Ewing, NJ 08628

*For Lease*

## SITE PLAN

Parkway Town Center Residential Area  
1,000 Units



Store #	Tenant/Owner	SF
1A	CVS Pharmacy	17,645
1B	Body Language Dance Studio	5,850
1C	Five Guys	3,331
2	Budo Karate	1,875
3-4	Dollar General	6,500
5	Affordable Care	2,850
6	Raeliance Medical Group	3,248
7	G & H Pastries	1,900
8	Captain Laundry	1,900
9-10	Villa Rosa Restaurant	3,975
11-12	East Sushi Restaurant	3,325
13	LA Perfection Nails	1,424
14-15	Capital Health	23,022
1320	Available	8,340
PAD	Available	3,200

1000 Germantown Pike, Suite A-2 | Plymouth Meeting, PA 19462 | [www.PennmarkProperties.com](http://www.PennmarkProperties.com) | 610-272-6500 x126

The following materials provided have been obtained from sources believed reliable. Pennmark Management Company, INC. has not verified, and makes no guarantee, warranty or representation about the information presented. Any projections, assumptions or estimates used, are for example only, and do not represent the current or future performance of the property.

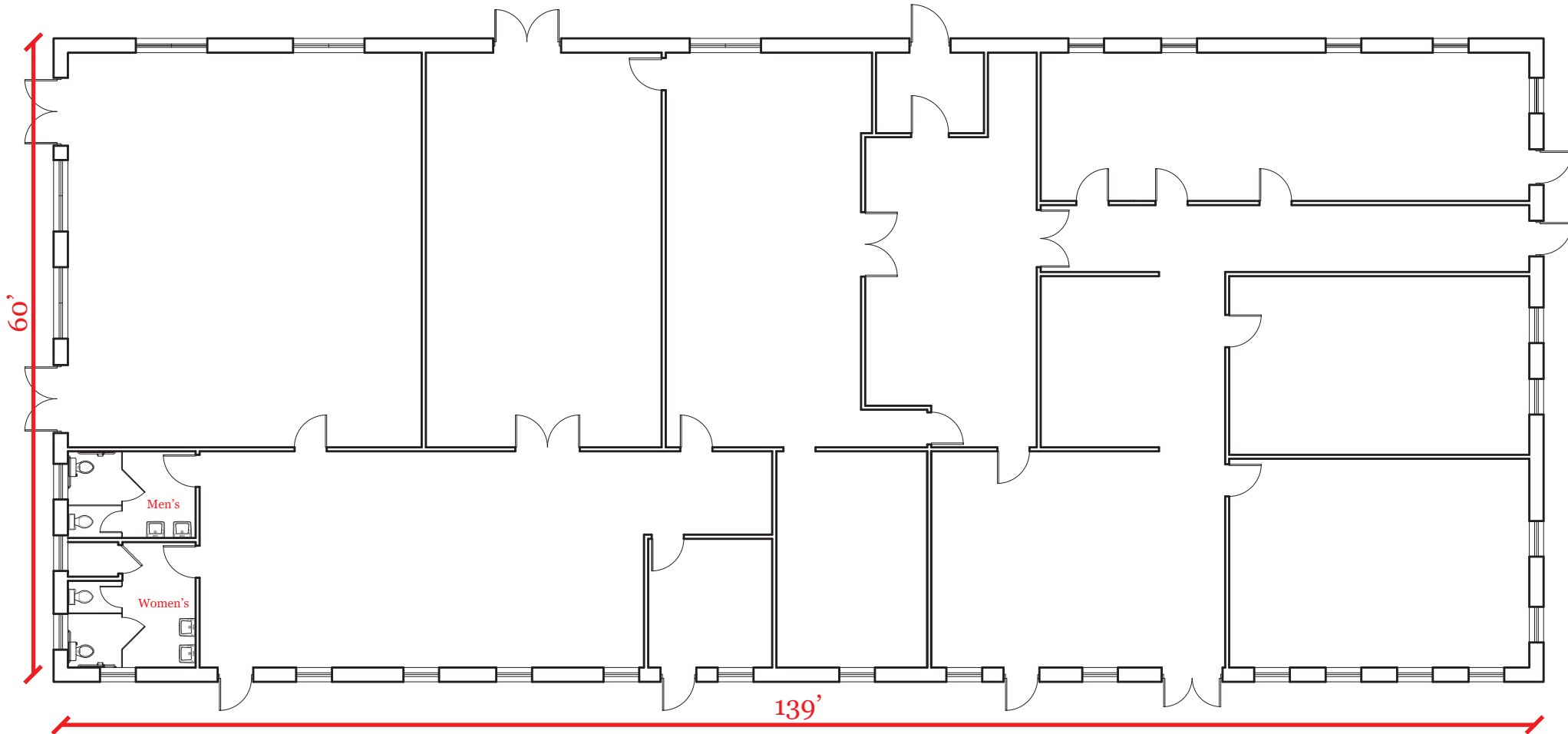


# 1320 PARKWAY

1320 Parkway Ave | Ewing, NJ 08628

*For Lease*

## SPACE PLAN



1000 Germantown Pike, Suite A-2 | Plymouth Meeting, PA 19462 | [www.PennmarkProperties.com](http://www.PennmarkProperties.com) | 610-272-6500 x126

The following materials provided have been obtained from sources believed reliable. Penmark Management Company, INC. has not verified, and makes no guarantee, warranty or representation about the information presented. Any projections, assumptions or estimates used, are for example only, and do not represent the current or future performance of the property.



# 1320 PARKWAY

1320 Parkway Ave | Ewing, NJ 08628

*For Lease*



## RESIDENTIAL IMPACT

# 2,128 Units

- Ewing Town Center-  
1,100 Apartments
- Heritage Court-  
392 Apartments
- WoodBrook House-  
96 Apartments
- Housing Development-  
210 Homes
- Ewing Prop, LLC-  
330 Apartments

# 1320 PARKWAY

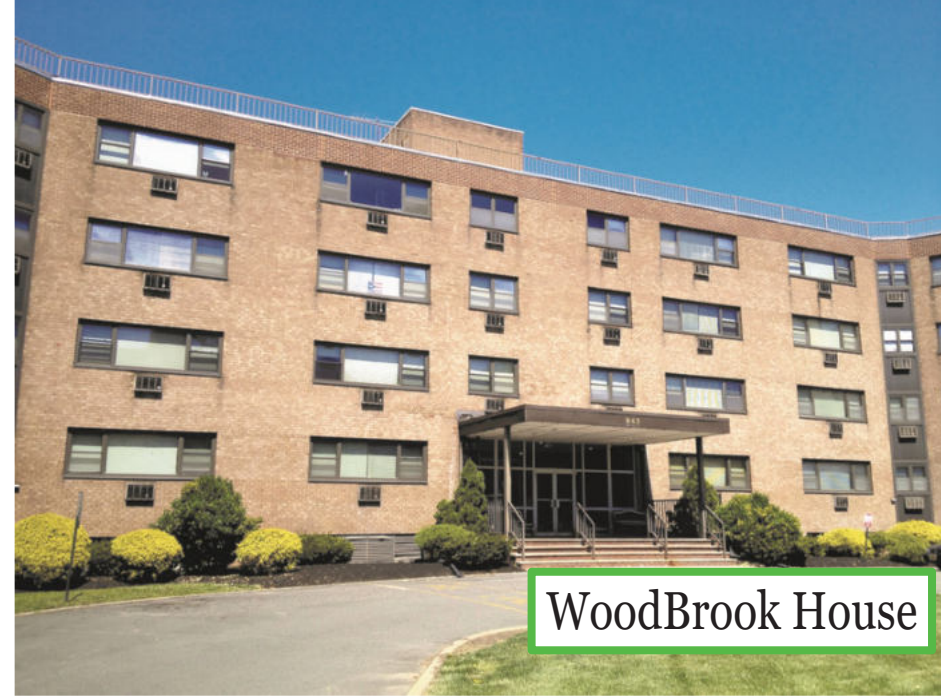
1320 Parkway Ave | Ewing, NJ 08628

*For Lease*

## RESIDENTIAL DEVELOPMENTS



Ewing Town Center



WoodBrook House



Housing Development



Heritage Court

1000 Germantown Pike, Suite A-2 | Plymouth Meeting, PA 19462 | [www.PennmarkProperties.com](http://www.PennmarkProperties.com) | 610-272-6500 x126

The following materials provided have been obtained from sources believed reliable. Penmark Management Company, INC. has not verified, and makes no guarantee, warranty or representation about the information presented. Any projections, assumptions or estimates used, are for example only, and do not represent the current or future performance of the property.

