

FOR LEASE

Prime Office Space in Downtown

800 SOUTH FIGUEROA ST

Los Angeles, CA 90017

\$50 FOGO DE CHAO
TOUR INCENTIVE**

NAI Capital
COMMERCIAL REAL ESTATE SERVICES, WORLDWIDE

Mark O'Brien
Executive Managing Director
213.632.7712
mobrien@naicapital.com
Cal DRE Lic #01120143



800 FIGUEROA



\$4.50 /RSF Broker Bonus



PRIME OFFICE SPACE

Rate:	Negotiable
Term:	3-10 years
Availability:	Immediately
Available Space:	900 - 11,783 RSF

SUITES AVAILABLE

6th Floor	Suite 605	3,285 RSF
	Suite 655	900 RSF
7th Floor	Suite 760	1,808 RSF
8th Floor	Suite 800	11,783 RSF
9th Floor	Suite 970	2,998 RSF
	Suite 1050	2,913 RSF
10th Floor	Suite 1020	4,342 RSF
	Suite 1080	3,609 RSF
11th Floor	Suite 1100	3,651 RSF
	Suite 1140	2,683 RSF
12th Floor	Suite 1200	4,674 RSF
	Suite 1205	1,512 RSF
	Suite 1210	2,829 RSF

Property Overview

- 140,000 SF building
- 17,000 SF floor plates
- Walking distance to Metro Rail Station
- Close proximity to plenty of amenities including 7th Street market place and L.A. Live

** Broker Bonus shall be paid on any fully executed Lease on or before July 31, 2026*

*** Receive a \$50 gift care to FOGO DE CHAO for any qualified tours for the suites listed.*



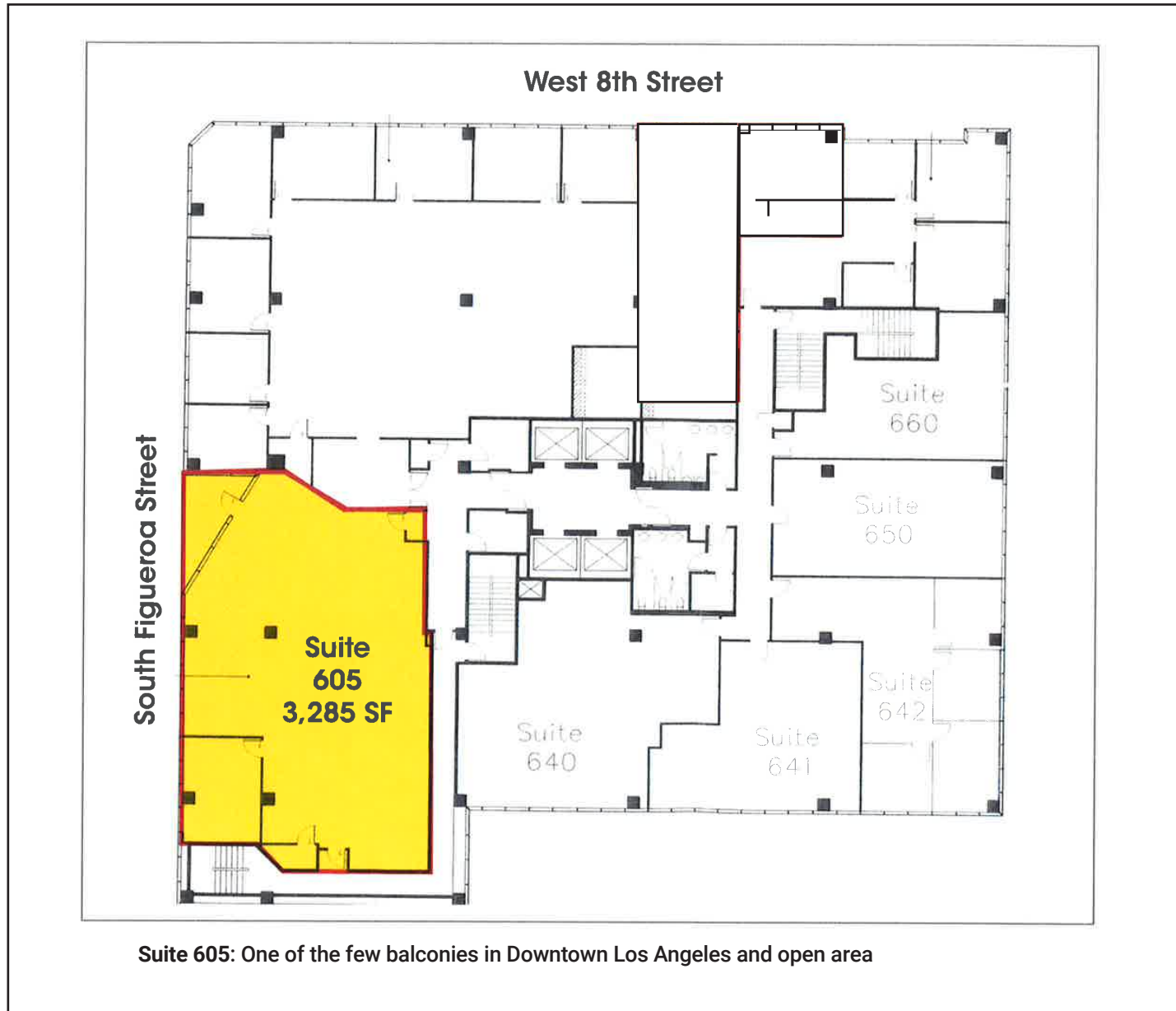
800 S Figueroa St.

PROPERTY PHOTOS



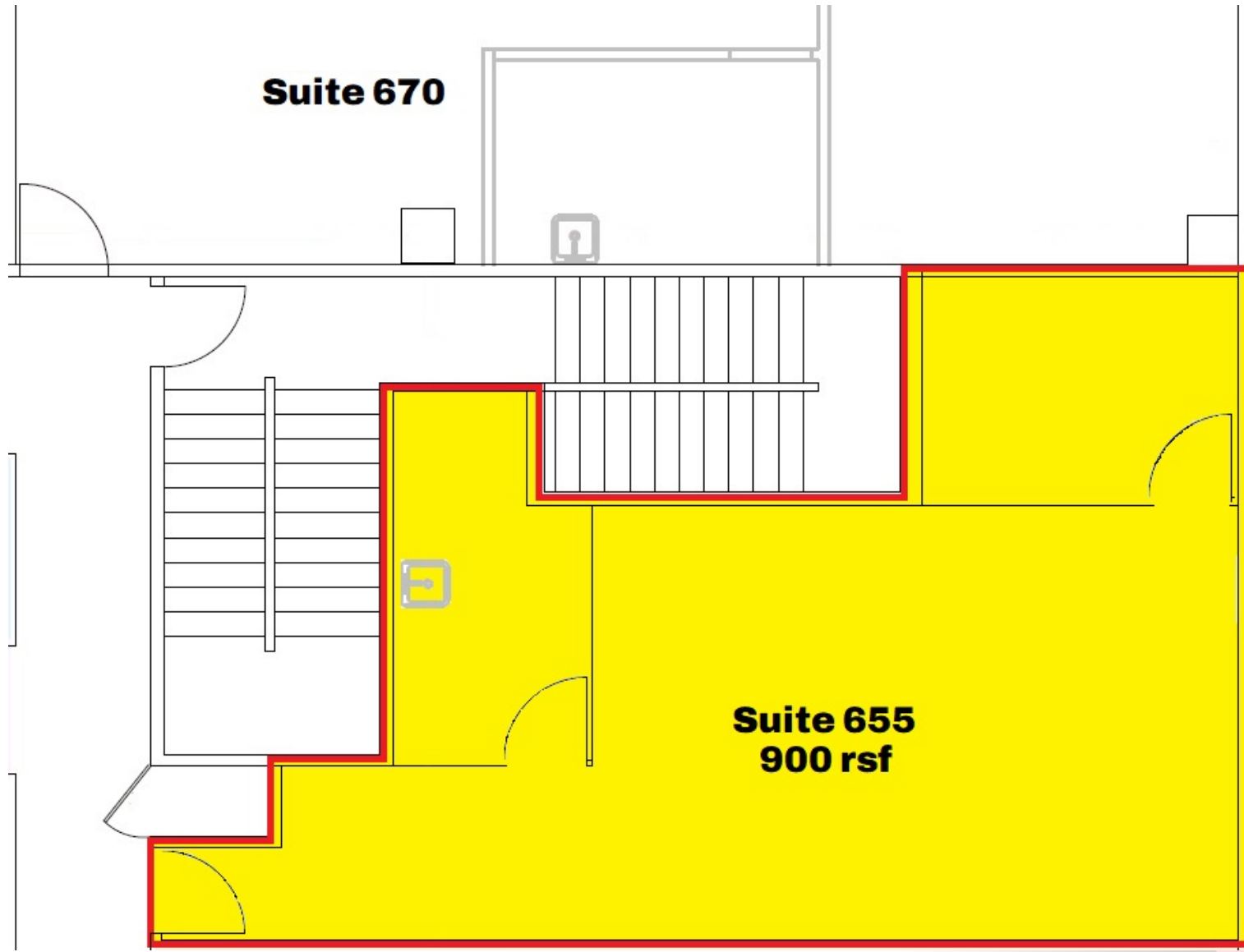
800 S Figueroa St.

FLOOR PLAN: 6th Floor



800 S Figueroa St.

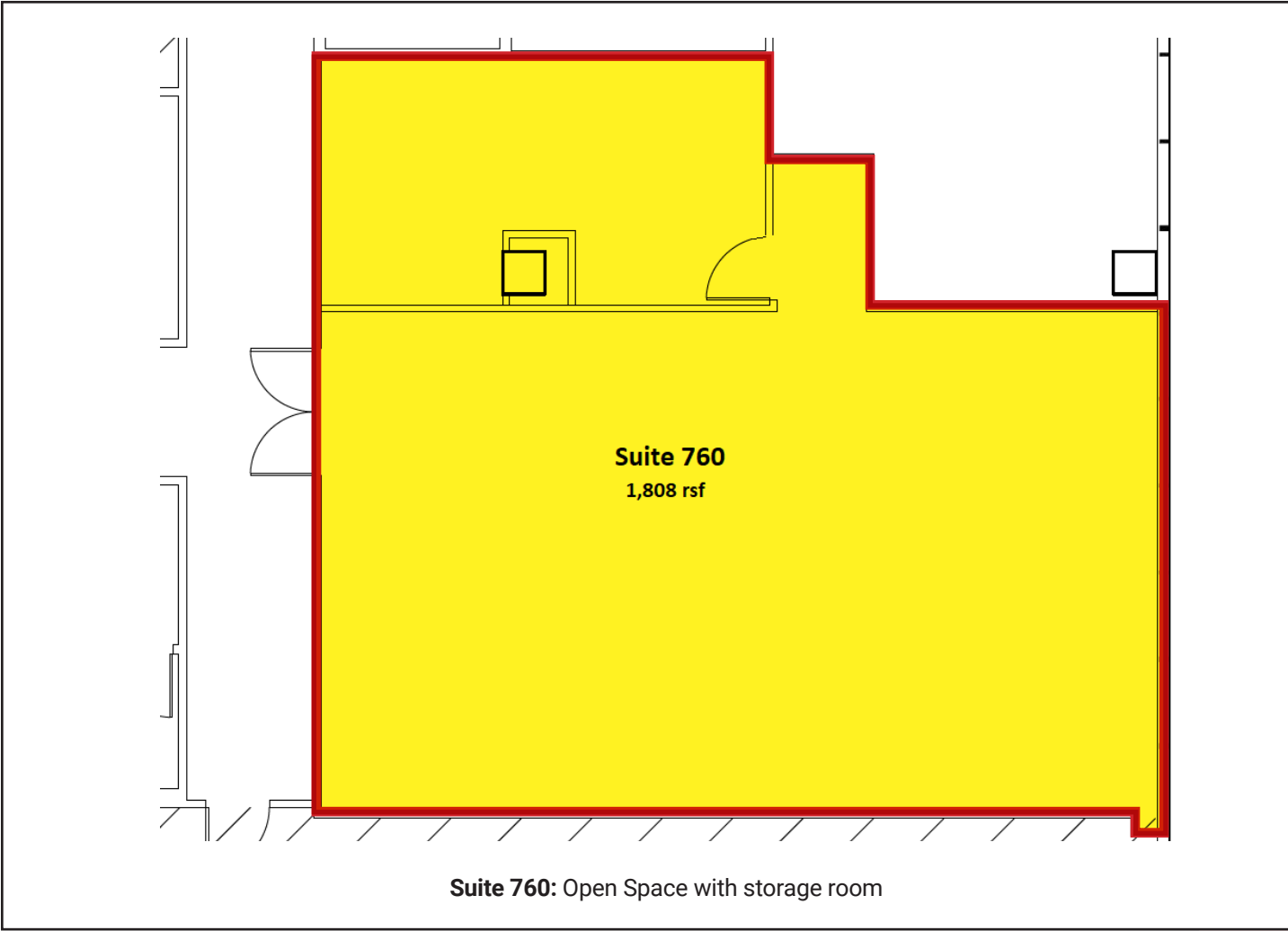
FLOOR PLAN: 6th Floor



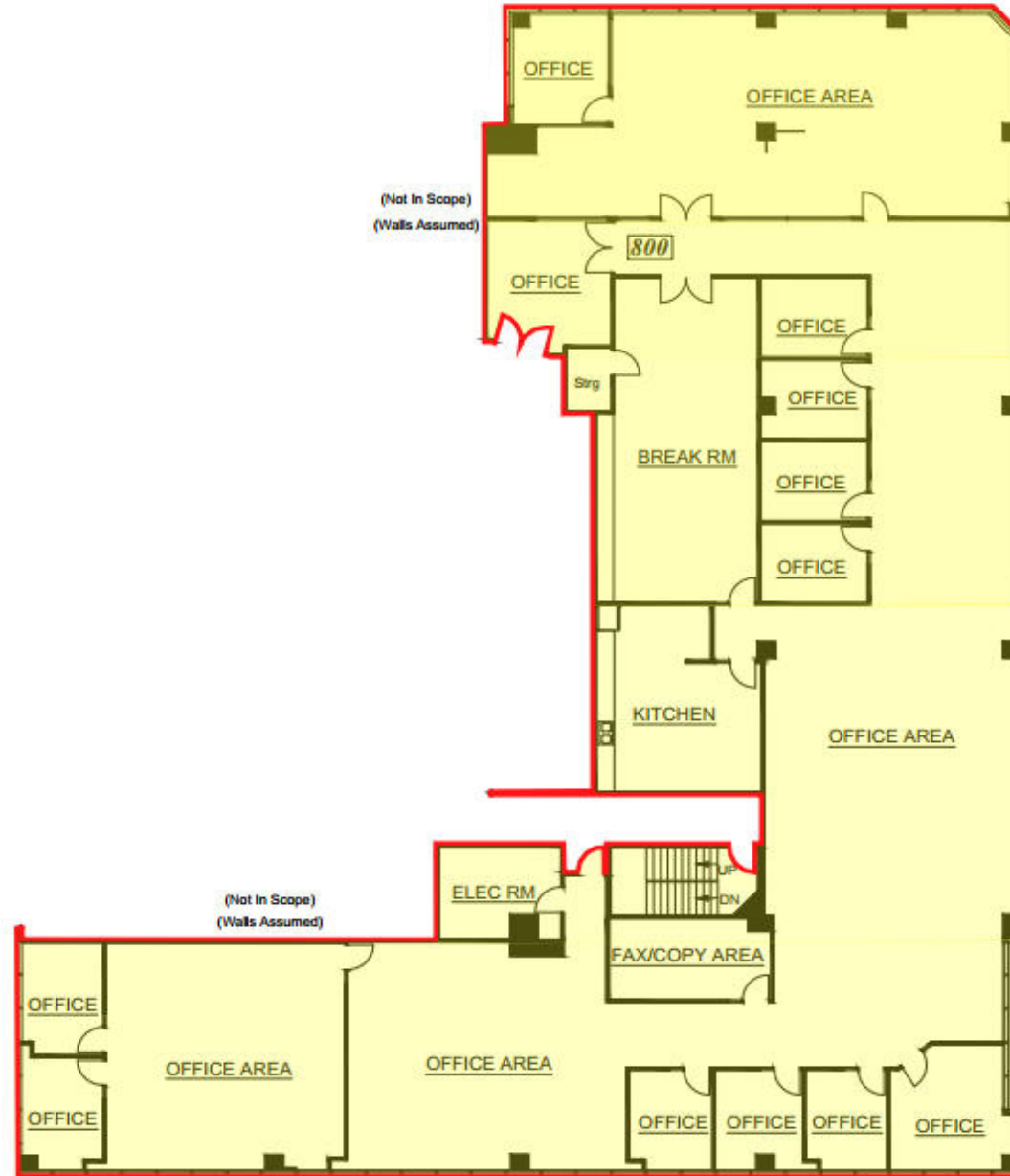
Suite 655: 900 RSF: 1 perimeter office, 1 internal office and open space. Good condition.

800 S Figueroa St.

FLOOR PLAN: 7th Floor



FLOOR PLAN: 8th Floor

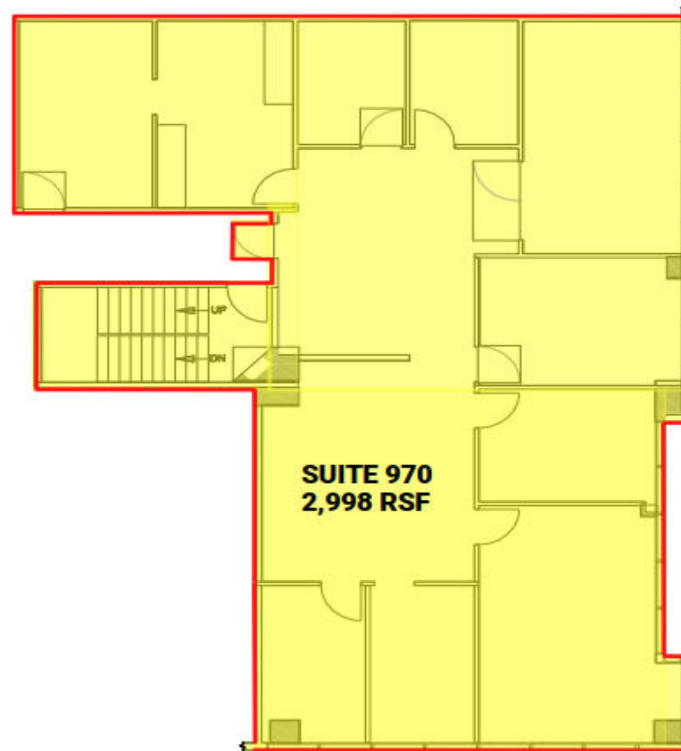


Suite 800: 11,783 RSF 7 perimeter offices, 4 internal offices, large conference room, show room, kitchen, open space for cubicles.



800 S Figueroa St.

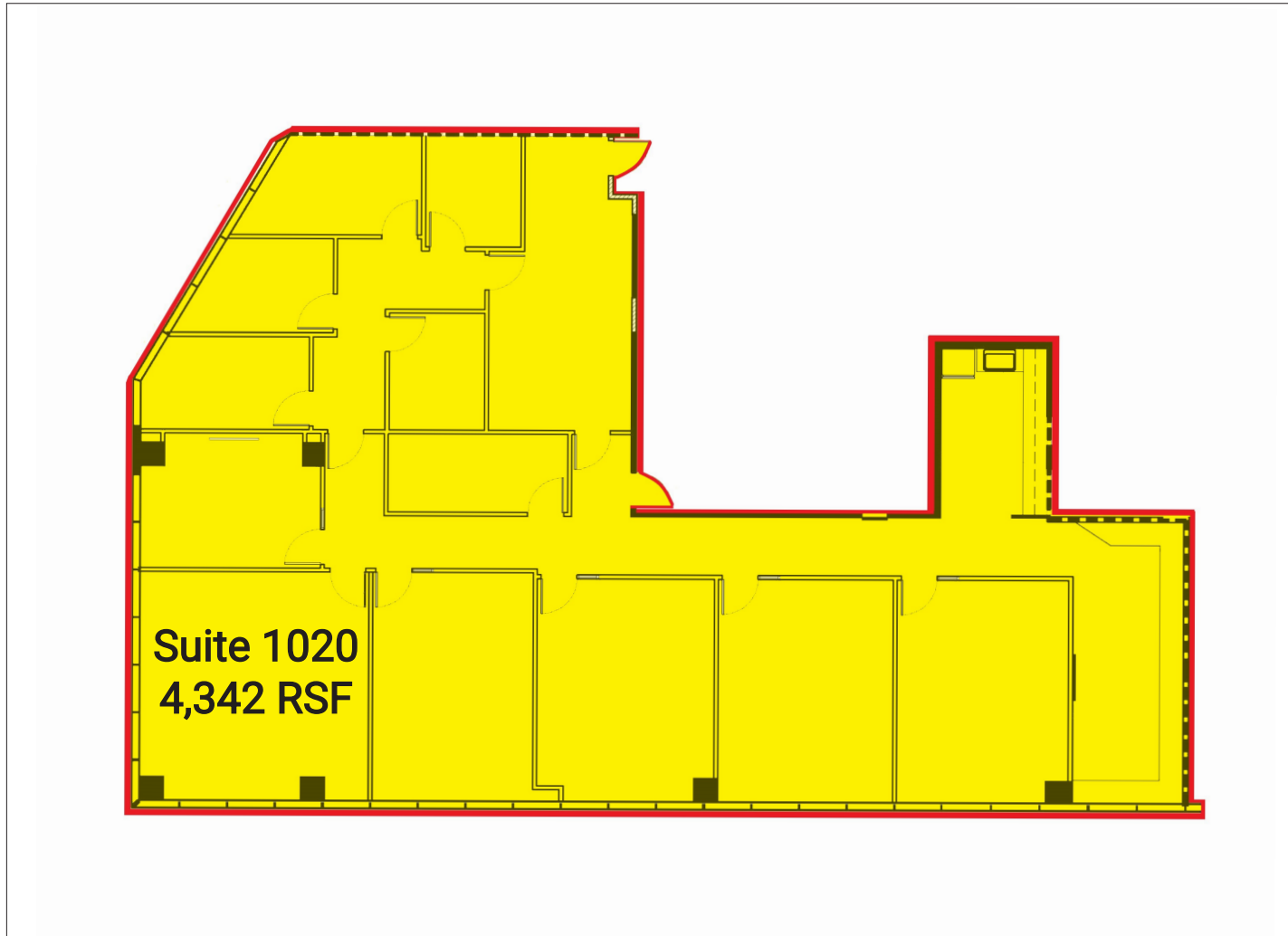
FLOOR PLAN: 9th Floor



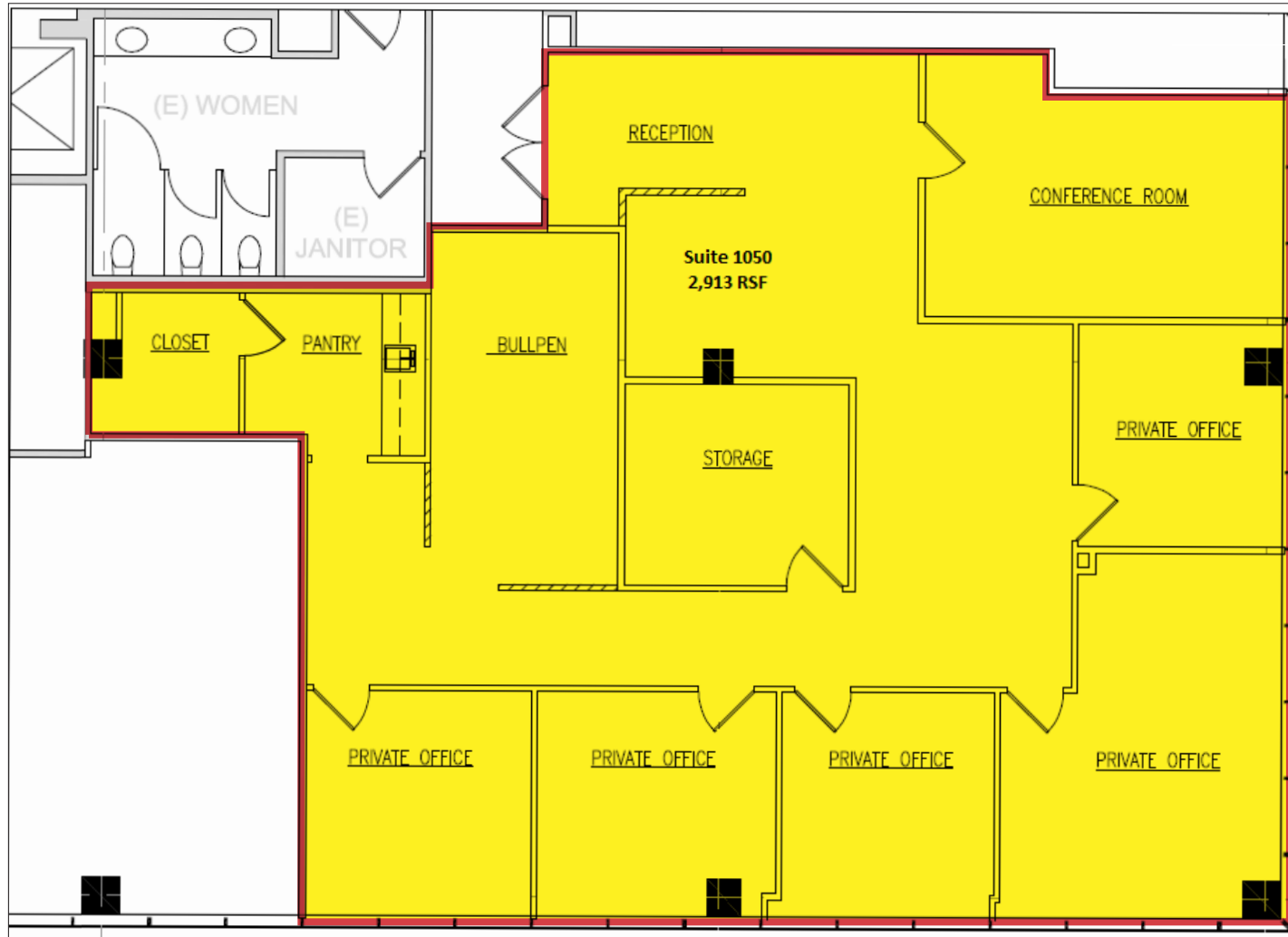
Suite 970 5 perimeter offices, 2 small internal offices, 1 large conference room, kitchen, storage room, reception area

800 S Figueroa St.

FLOOR PLAN: 10th Floor

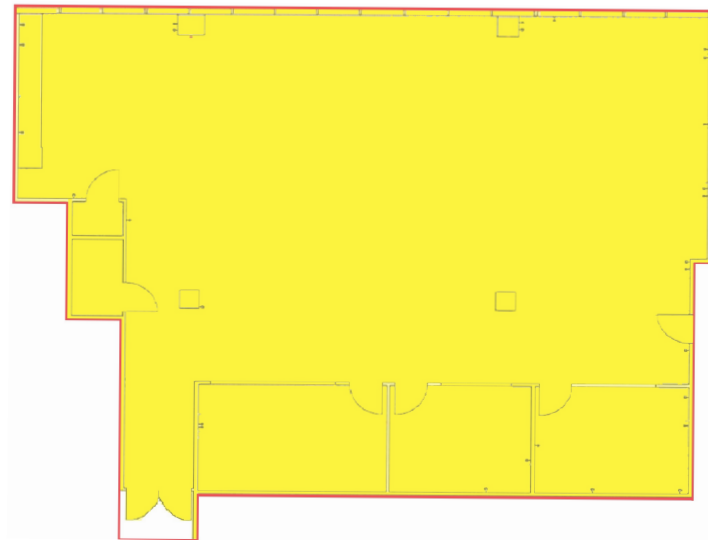


Suite 1020: 4,342 RSF: 4 Large team rooms, 1 Large conference room, 1 small conference room, kitchen, 3 perimeter offices & 3 interior offices.



Suite 1050: 2,913 RSF: Very efficient space with 5 perimeter offices, conference room, storage kitchen

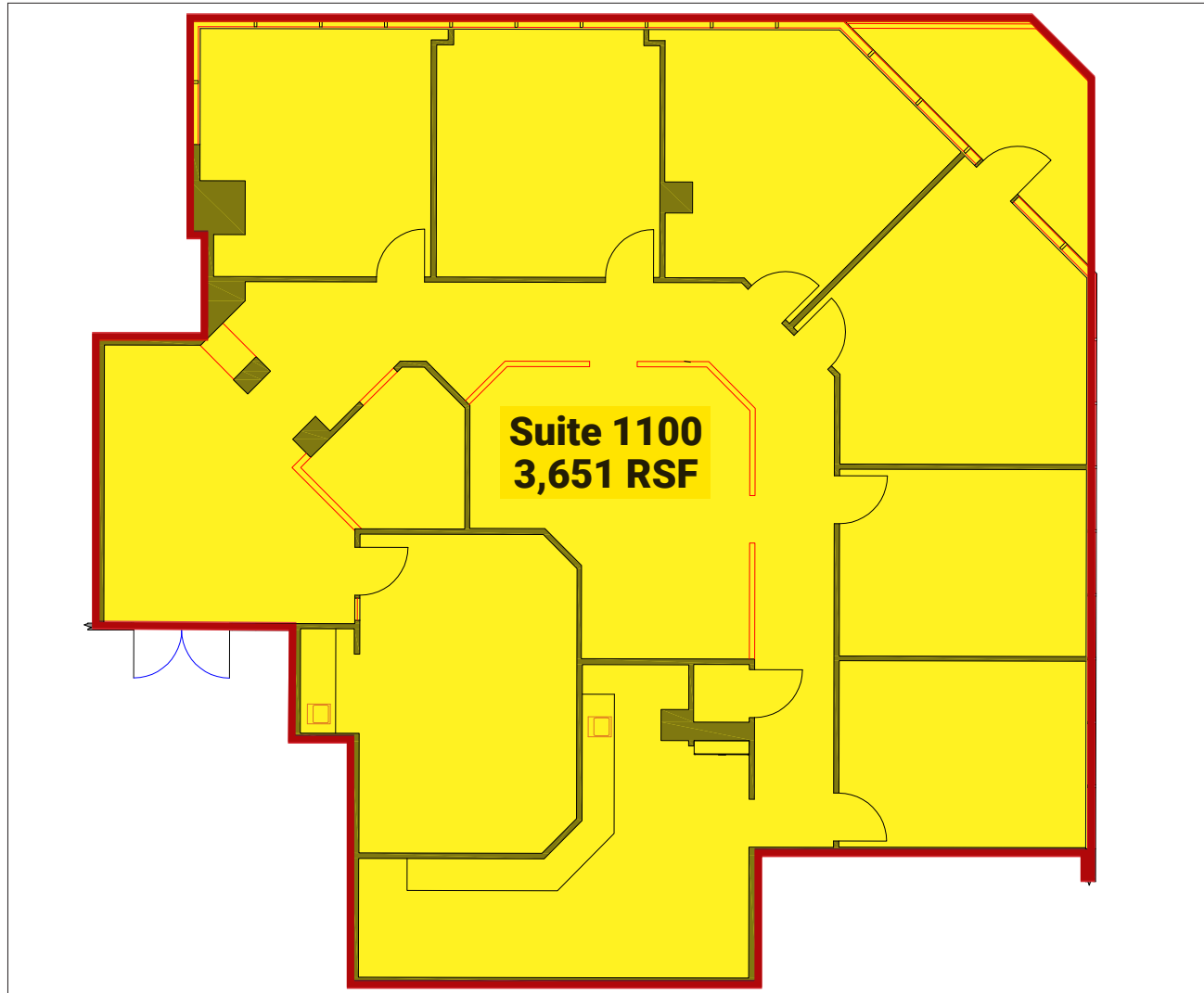
800 S Figueroa St.
FLOOR PLAN: 10th Floor



Suite 1080: 3,609 RSF. Two interior offices, conference room, open kitchen, and open area which can fit up to 30 open desks.

800 S Figueroa St.

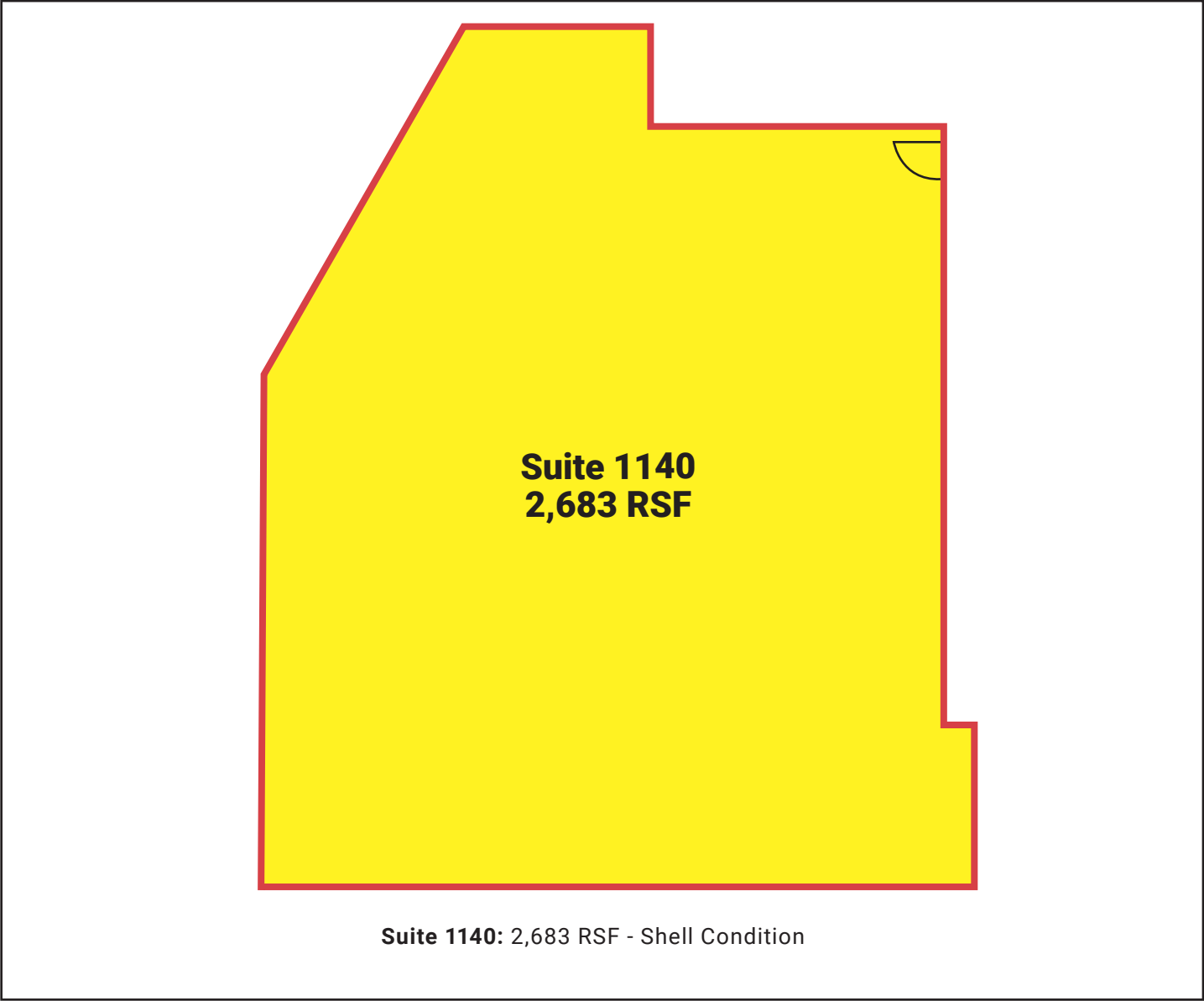
FLOOR PLAN: 11th Floor



Suite 1100: 3,651 RSF: 6 perimeter offices, internal conference room, storage/work room

800 S Figueroa St.

FLOOR PLAN: 11th Floor



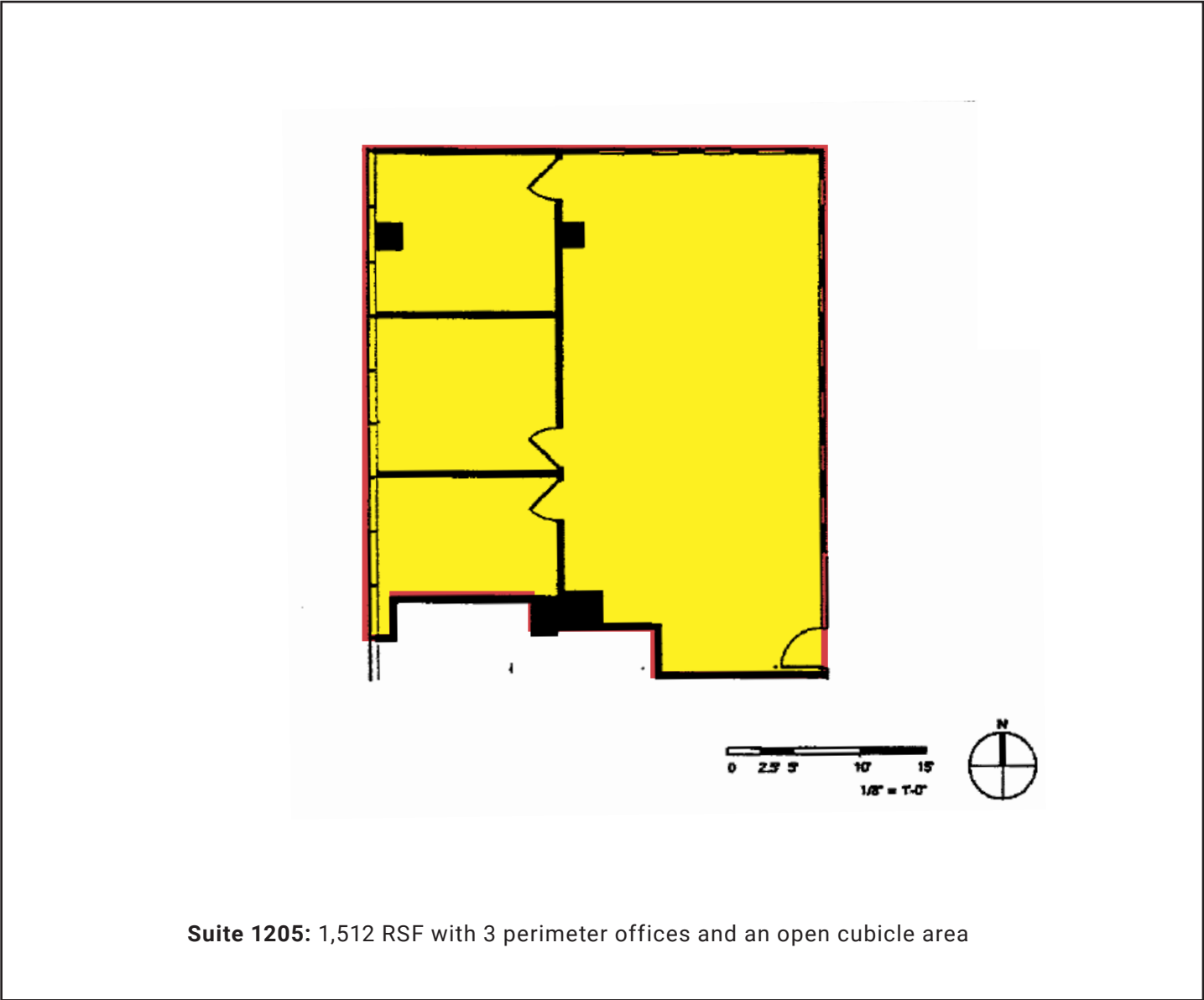
800 S Figueroa St.

FLOOR PLAN: 12th Floor



800 S Figueroa St.

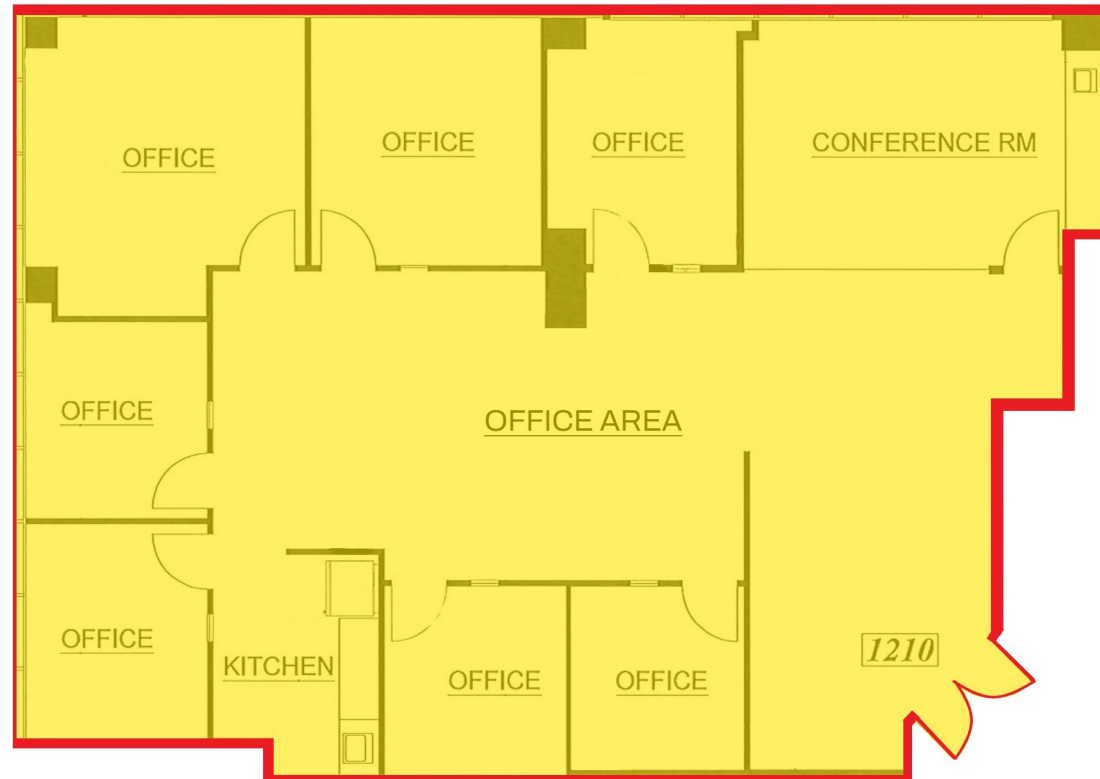
FLOOR PLAN: 12th Floor



Suite 1205: 1,512 RSF with 3 perimeter offices and an open cubicle area

800 S Figueroa St.

FLOOR PLAN: 12th Floor



Suite 1210: 2,829 RSF with 5 perimeter offices, conference room, two internal offices, open kitchen, reception and a open cubicle area.

800 S Figueroa St.

SURROUNDING AMENITIES



800 South FIGUEROA ST

Los Angeles, CA 90017

NAI Capital
COMMERCIAL REAL ESTATE SERVICES, WORLDWIDE



CONTACT INFORMATION

Mark O'Brien

Executive Managing Director

213.632.7712

mobrien@naicapital.com

Cal DRE Lic #01120143

NAI Capital Commercial

800 Wilshire Blvd.

Suite 925

Los Angeles, CA 90017

213.632.7700



800 FIGUEROA