

# OFFICE SPACE FOR LEASE



## MAITLAND 100

2300 Maitland Center Parkway  
Maitland, FL 32751

Maitland 100 is a multi-story office building with on-site amenities including a state-of-the-art fitness center and a cafe. The building was recently renovated with upgrades to its lobby, corridors & restrooms.

[Click Here To Tour The Lobby](#)

**NEWLY RENOVATED**

**1,452 - 3,237 RSF  
AVAILABLE**



For more information, contact:

**Reanna Becker**  
(407) 360-9675 | [RBecker@trpre.com](mailto:RBecker@trpre.com)

[www.trpre.com](http://www.trpre.com)

## SPACE AVAILABLE

Suite	RSF
260	1,718 (Avail. 11/1/26)
305	3,237 (Avail. 12/1/26)
330	1,452

VIRTUAL TOUR: [CLICK SUITE RSF](#)



## BUILDING FEATURES & AMENITIES

- **Renovated Lobby, Corridor & Restrooms**
- Telcom (Cable/Fiber): Spectrum, Century Link, Crown Castle
- Building & Monument Signage Available
- State-of-the-Art Fitness Center + Showers
- On-Site Restaurant: Greenhouse Cafe
- Adjacent to Starbucks in the Sheraton Hotel Links Cafe

[Click Here To Tour Fitness Center](#)

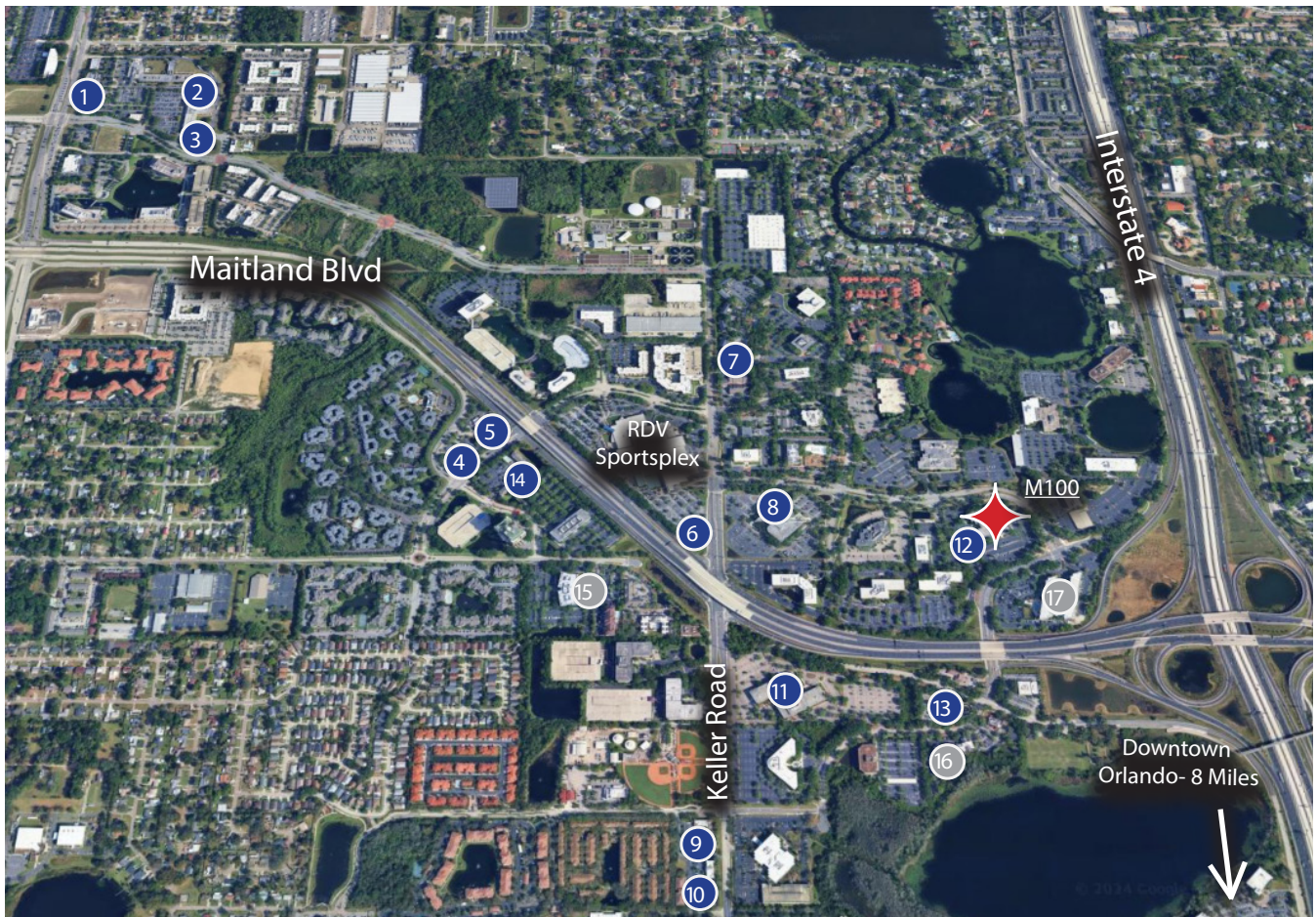




For more information, contact:  
**Reanna Becker**  
(407) 360-9675 | [RBecker@trpcrc.com](mailto:RBecker@trpcrc.com)

[www.trpcrc.com](http://www.trpcrc.com)

## LOCATION HIGHLIGHTS



### RESTAURANTS/ CONVENIENCE

- |                                    |                      |
|------------------------------------|----------------------|
| 1 Fuzzy's Taco Shop                | 8 Wraps Delight Cafe |
| 2 Publix                           | 9 Curry Bowl Orlando |
| 3 Mikado Japanese Buffet           | 10 The Silly Grape   |
| 4 Wendy's                          | 11 Nature's Table    |
| 5 Chick-fil-A                      | 12 Greenhouse Cafe   |
| 6 Sam Snead's Oak Grill and Tavern | 13 Applebee's        |
| 7 Subway                           | 14 7-11              |

### HOTELS

- |                                 |
|---------------------------------|
| 15 Courtyard by Marriott        |
| 16 Homewood Suites by Hilton    |
| 17 Sheraton Orlando North Hotel |

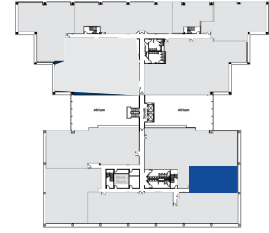
For more information, contact:

**Reanna Becker**  
 (407) 360-9675 | RBecker@trpcrc.com

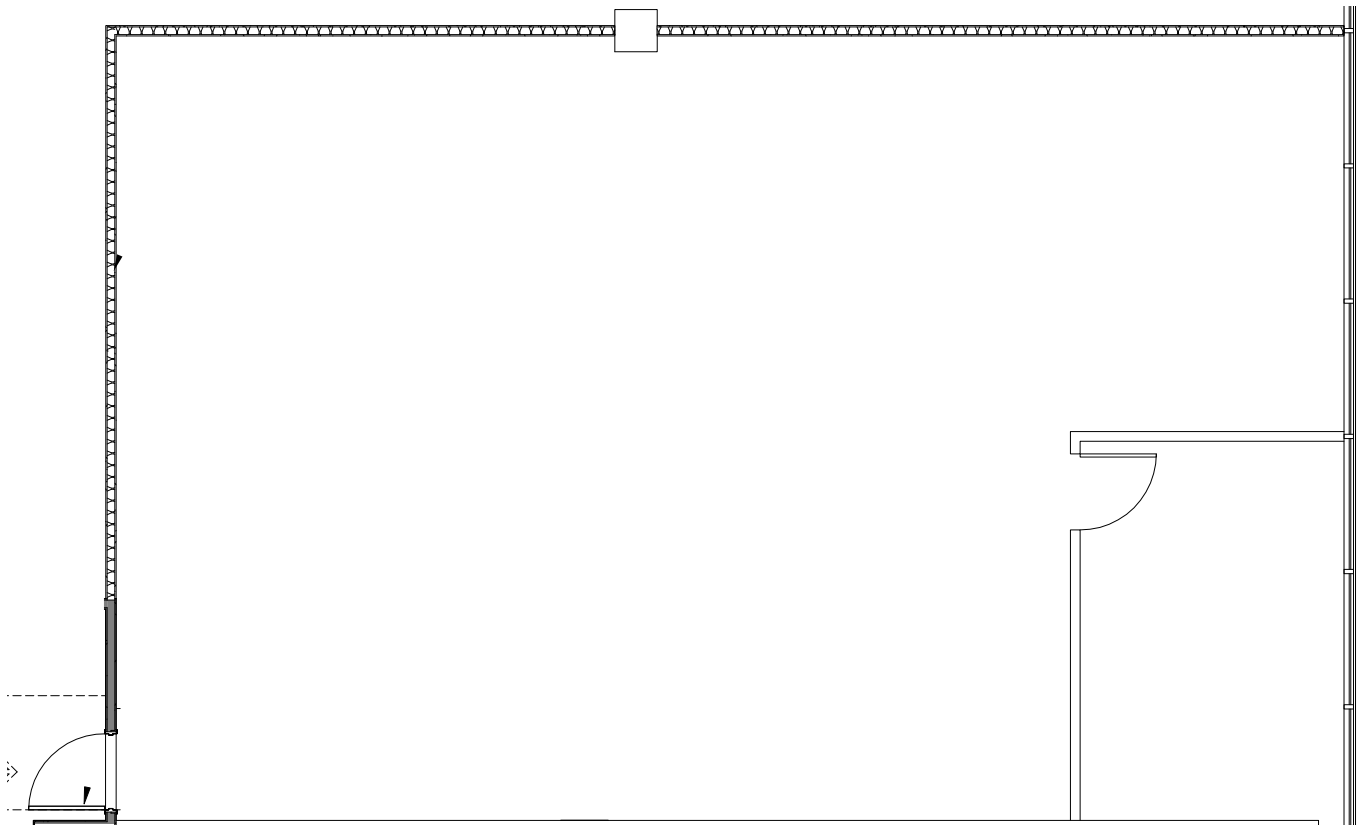
[www.trpcrc.com](http://www.trpcrc.com)

2nd  
Floor

Suite 260: 1,718 RSF



Available 11/1/26



■ Primary  
Entrance

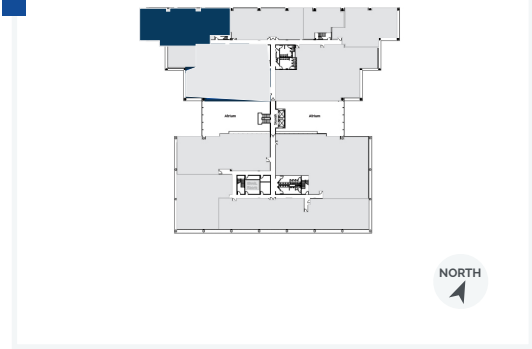
For more information, contact:

**Reanna Becker**  
(407) 360-9675 | RBecker@trpcre.com

[www.trpcre.com](http://www.trpcre.com)

3rd Floor

Suite 305: 3,237 RSF



Available 12/1/26

Glass Window Line

