



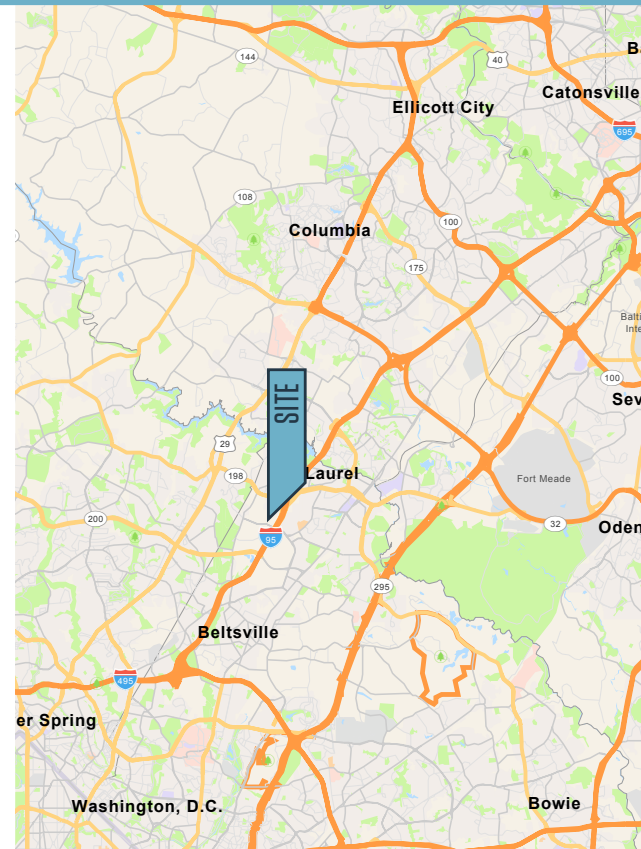
# OFFICE FOR LEASE

## AVAILABLE SUITES:

- **Suite 101:** 2,715 square feet
- **Suite 102:** 3,210 square feet
- **Suite 103:** 2,613 square feet
- **Suite 201:** 1,532 square feet
- **Suite 203:** 1,470 square feet
- **Suites 101, 102, 103:** Can be combined up to 8,538 square feet

## PROPERTY HIGHLIGHTS:

- Well maintained, two-story office building
- **Rental Rate:**
  - » **Suite 101:** \$20.00/SF + utilities & cleaning
  - » **Suite 102 & 103:** \$18.00/SF + utilities & cleaning
  - » **Suite 201 & 203:** \$19.95/SF - Full Service
- **Parking:** Ample free surface parking
- **Access:** Two minutes from I-95; easy access to Route 198 with access to Routes 129 & 195



**Chuck Breitenother**  
cbreitenother@klnb.com  
443-574-1422

**Abby Glassberg**  
aglassberg@klnb.com  
443-574-1433

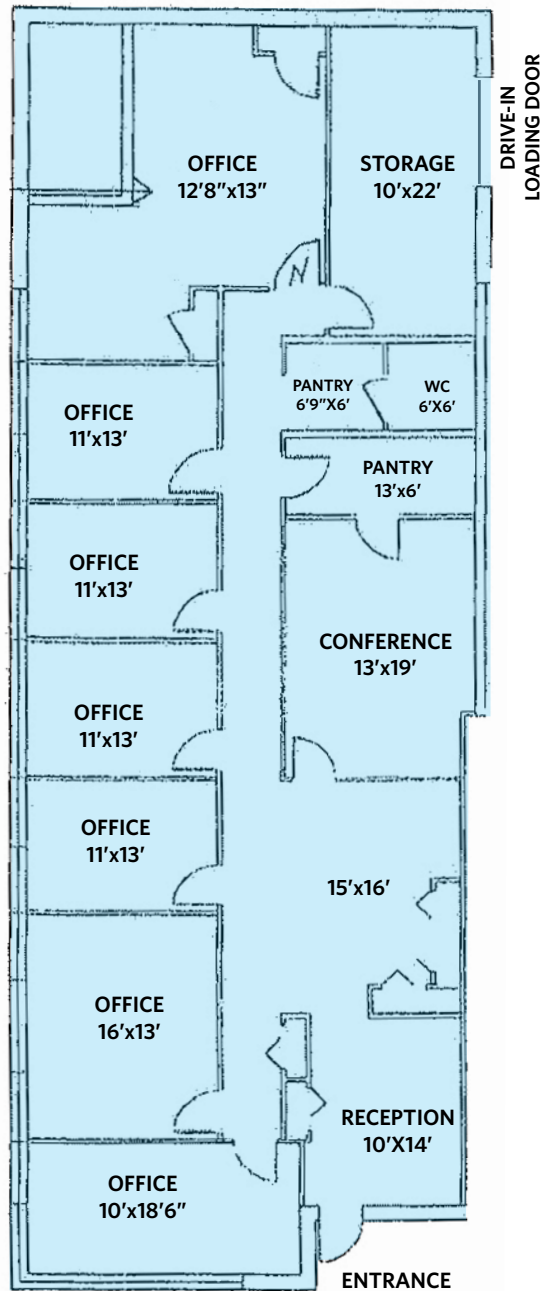
9881 Broken Land Parkway, Suite 300  
Columbia, MD 21046  
**klnb.com**

# 14900 SWEITZER LANE

Laurel, MD 20707 | Prince George's County

## FIRST FLOOR PLANS

### SUITE 101 2,715 SF

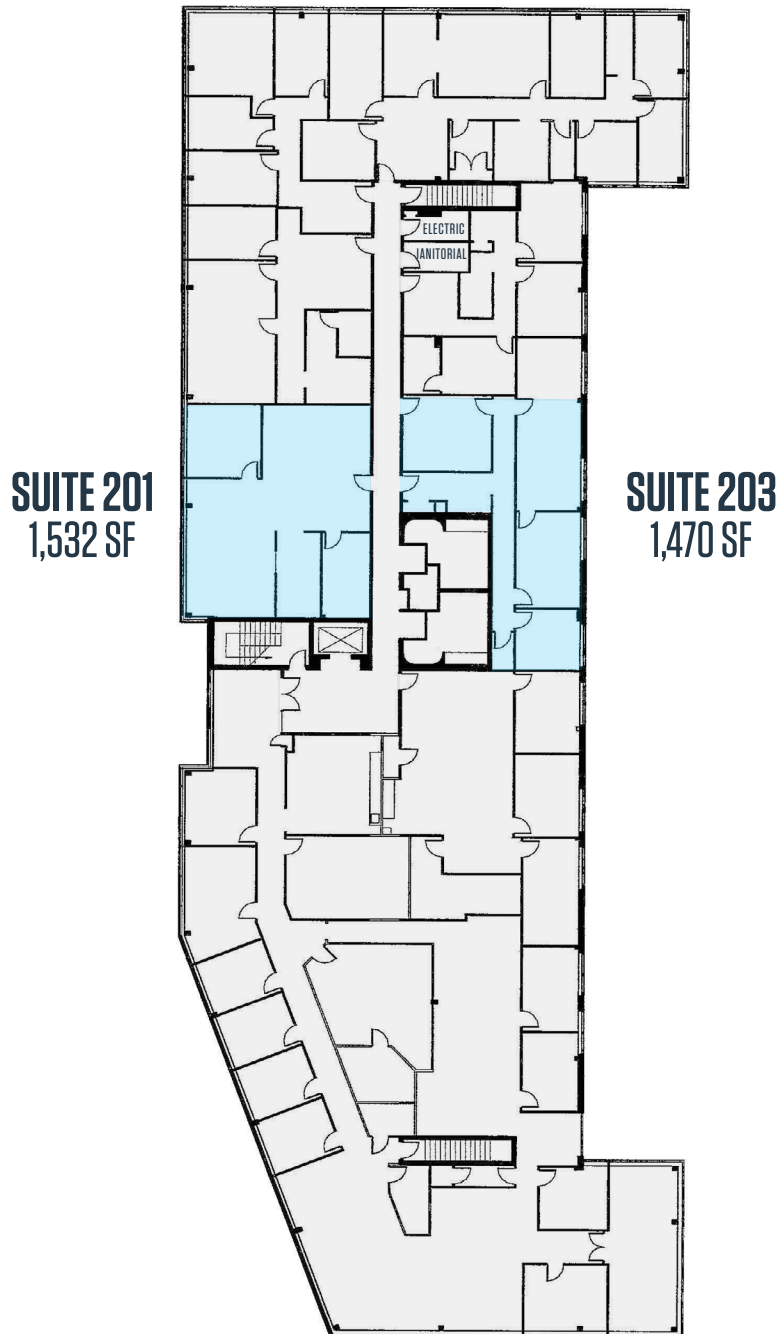


**Chuck Breitenother**  
cbreitenother@klnb.com  
443-574-1422

**Abby Glassberg**  
aglassberg@klnb.com  
443-574-1433

## SECOND FLOOR PLANS

---

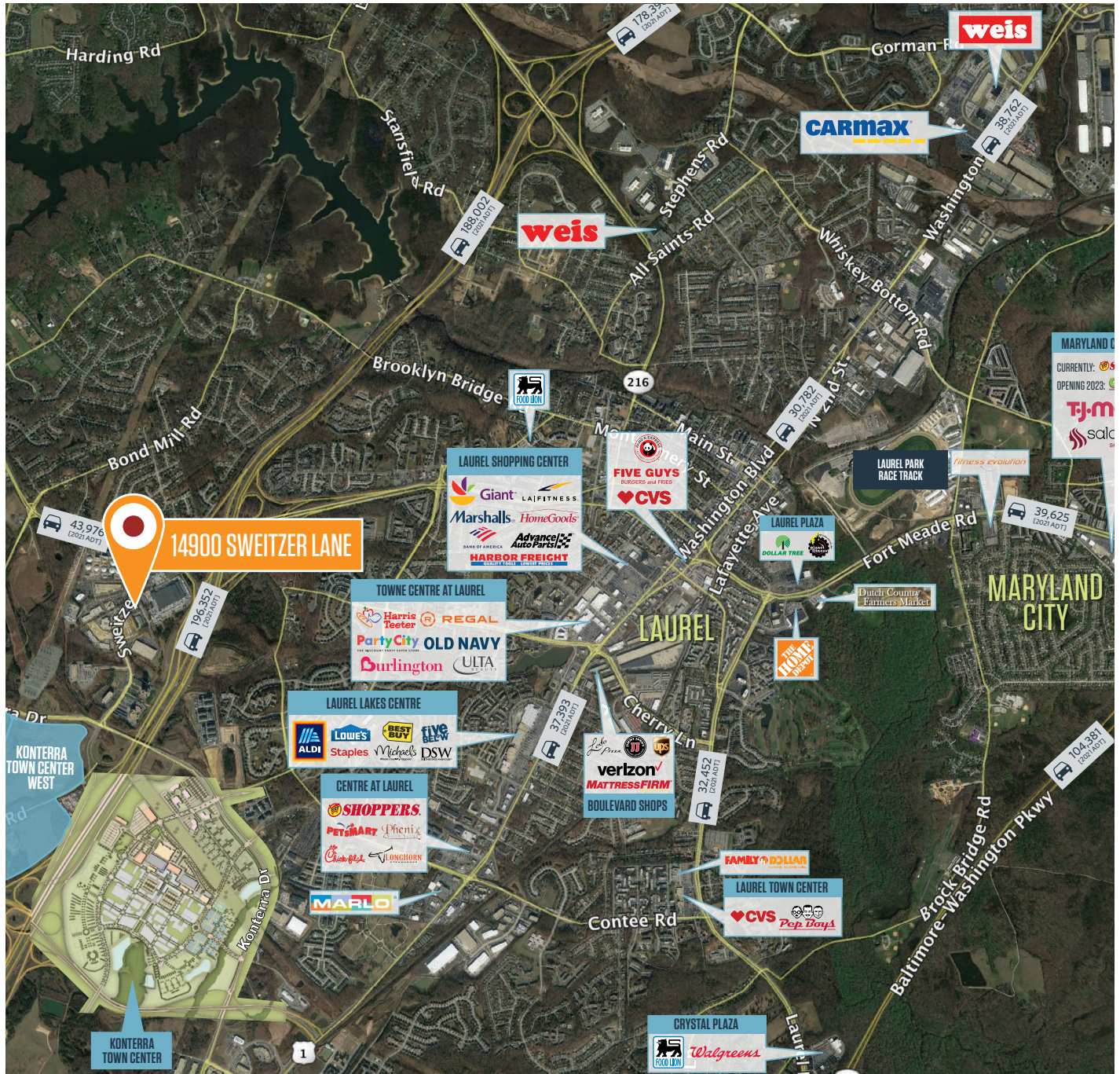


# 14900 SWEITZER LANE

Laurel, MD 20707 | Prince George's County



## MARKET AERIAL



While we have no reason to doubt the accuracy of any of the information supplied, we cannot, and do not, guarantee its accuracy. All information should be independently verified prior to a purchase or lease of the property. We are not responsible for errors, omissions, misuse, or misinterpretation of information contained herein and make no warranty of any kind, express or implied, with respect to the property or any other matters.

**Chuck Breitenother**  
 cbreitenother@klnb.com  
 443-574-1422

**Abby Glassberg**  
 aglassberg@klnb.com  
 443-574-1433

9881 Broken Land Parkway, Suite 300  
 Columbia, MD 21046  
 klnb.com