

## PETER JEFFERSON MEDICAL CENTER.

590 Peter Jefferson Parkway, Charlottesville, VA

# Design Your Dream Medical Office\*



*\*Without draining your budget*

Looking for a tailored medical office without the high price tag? Get in touch with Transwestern's Healthcare Advisory Services Team to learn more about **tenant improvement packages at 590 Peter Jefferson Parkway.**

**590** PETER  
JEFFERSON  
PARKWAY.

For more information, **contact:**

**JOSEPH MCCORMICK**

301.896.9072

joe.mccormick@transwestern.com

**CHERI DOYLE**

484.345.1373

cheri.doyle@transwestern.com



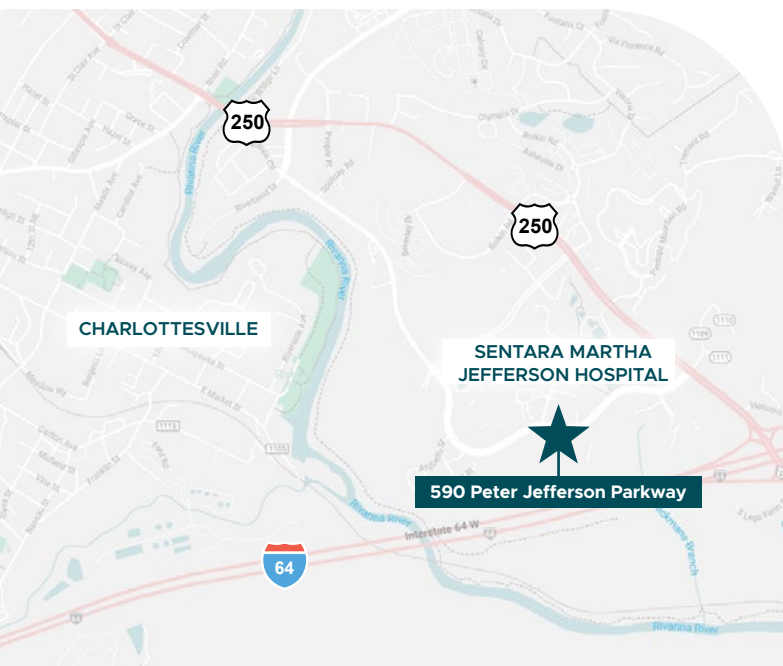
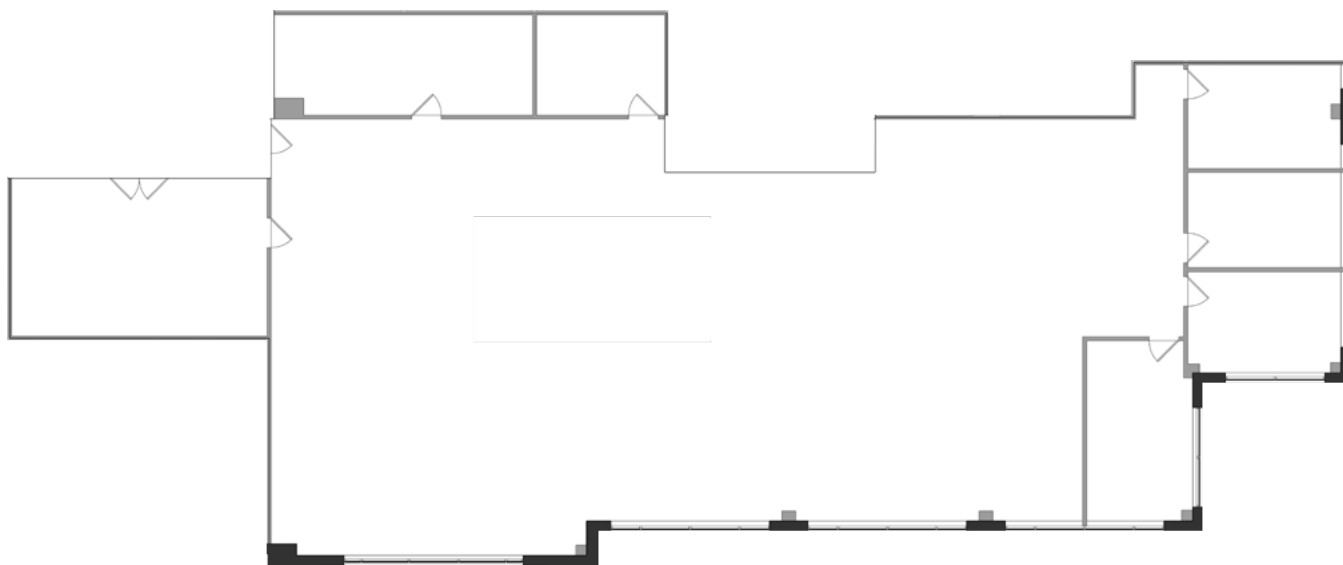
**TRANSWESTERN** | 7373 Wisconsin Avenue, Suite 850 | Bethesda, MD 20814 | 301.571.0900

# Available Space

**Suite 350** | 2,000 - 5,885 SF



- Class A Medical space.
- Landlord will offer an aggressive TI package.
- Directly adjacent to Sentara Martha Jefferson Hospital and within the Peter Jefferson Place office park.
- Premier accessibility and visibility to both Interstate 64 and Route 250, two of the area's most prominent roadways.



## The Neighborhood

### Demographics

Radius	Population	Median Age	Avg HH Income	Daytime Employees
5 Mile	39,834	35.8	\$99,383	91,144
10 Mile	54,098	37.6	\$108,467	107,957