



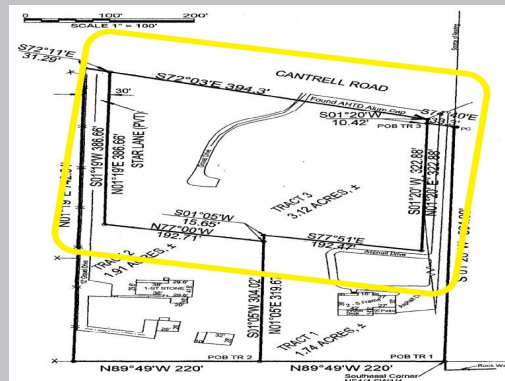
DEVELOPMENT LAND FOR SALE

SALES PRICE:

\$1,975,000

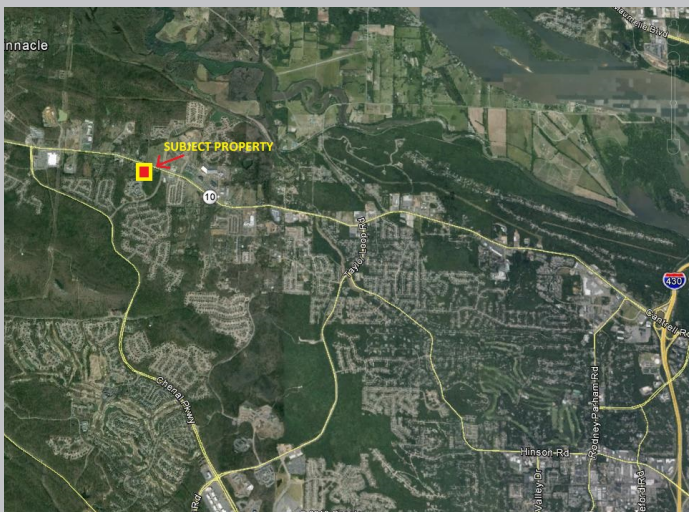
*only \$13.86/SF!

3.12 Acres Available



**BUILD TO SUIT
across street from
new Bank OZK
headquarters**

18021 Cantrell Rd. • Little Rock, Arkansas



Property Summary:

- 460' of Cantrell/ Hwy 10 Frontage
- Bound by Hwy 10 Overlay District
- Labeled as "Transition" on City Master Plan
- Commercial Potential
- New stoplight installation at the driveway of Bank OZK and Highway 10 intersection

FOR MORE INFORMATION, CONTACT:

Lauren Frederick

Commercial Agent

501-374-2303

lfrederick@hosto.com

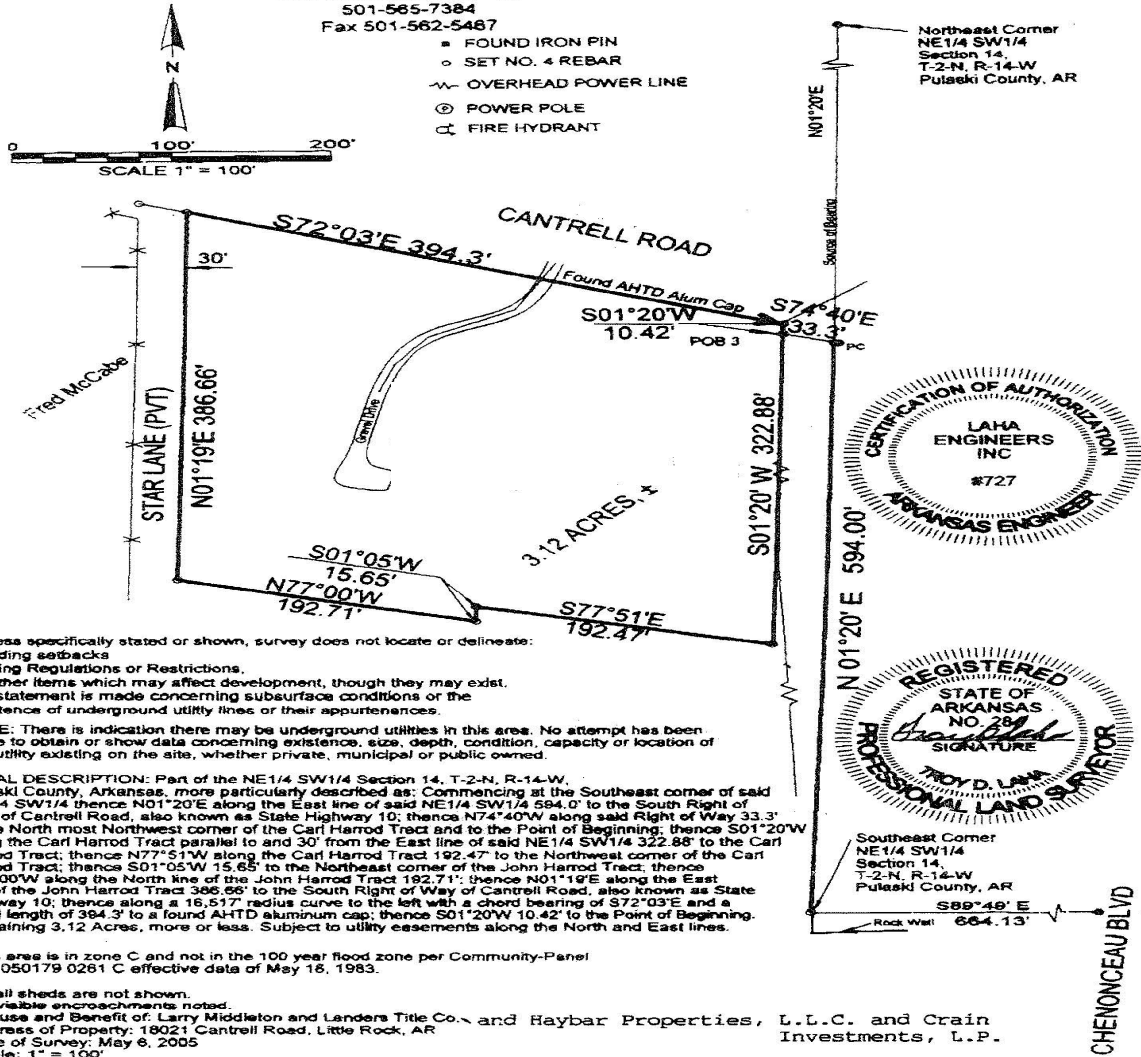
haybarrealestate.com

1802 I Cantrell Rd. • Little Rock, Arkansas

LAHA ENGINEERS, INC.

6602 Baseline Road Suite E
 P. O. Box 190251
 Little Rock, Arkansas 72219
 501-565-7384
 Fax 501-562-5487

- FOUND IRON PIN
- SET NO. 4 REBAR
- OVERHEAD POWER LINE
- ⊙ POWER POLE
- ⊕ FIRE HYDRANT



All information contained herein is secured from sources we believe to be reliable. However, no information is guaranteed in any way. Any reproduction of this material is prohibited without consent of Haybar Real Estate.

AGENCY/OWNERSHIP DISCLOSURE

Haybar Real Estate is the agent for the owner of the property described herein and has an ownership interest.



701 W. 7th Street • PO Box 3395 • Little Rock, AR 72203 • (501) 374-2303 (O) • (501) 372-3850 (F)