

1102 TELEPHONE RD

HISD SURPLUS PROPERTY

HOUSTON, TX 77023



KRISTEN MCDADE

Managing Director
+ 1 713 331 1796

kristen.mcdade@cushwake.com

MATTHEW DAVIS

Senior Director
+ 1 713 331 1798

matthew.davis@cushwake.com

MELISSA ELIZONDO

Brokerage Specialist
+1 346 396 4008

melissa.elizondo@cushwake.com

2025

GREATER HOUSTON MARKETPLACE

WHY HOUSTON:

6.8M

Residents in the City of Houston

25

Fortune 500 Companies

#3

among US Metro Areas in Fortune 500 Headquarters

#5

in the US in Fortune 1000 headquarters

55M sq ft

of Class A space

160k

Business establishments

1st

in Foreign Waterborne Tonnage

1st

in Gulf Coast Container Port

1st

in Import and Export

73

Foreign Owned Firms

GLOBAL TRADE CITY



ENERGY CAPITAL OF THE WORLD



PORT OF HOUSTON



WORLD'S LARGEST MEDICAL CENTER



NASA

DEMOGRAPHICS

(within 2 miles of 1102 Telephone Rd, Houston, TX 77023)



64,552

2024 Total Population



\$80,357

2024 Average Household Income



\$345,851

2024 Average Home Value

MAJOR LEAGUE SPORTS TEAMS



CLUTCH CITY

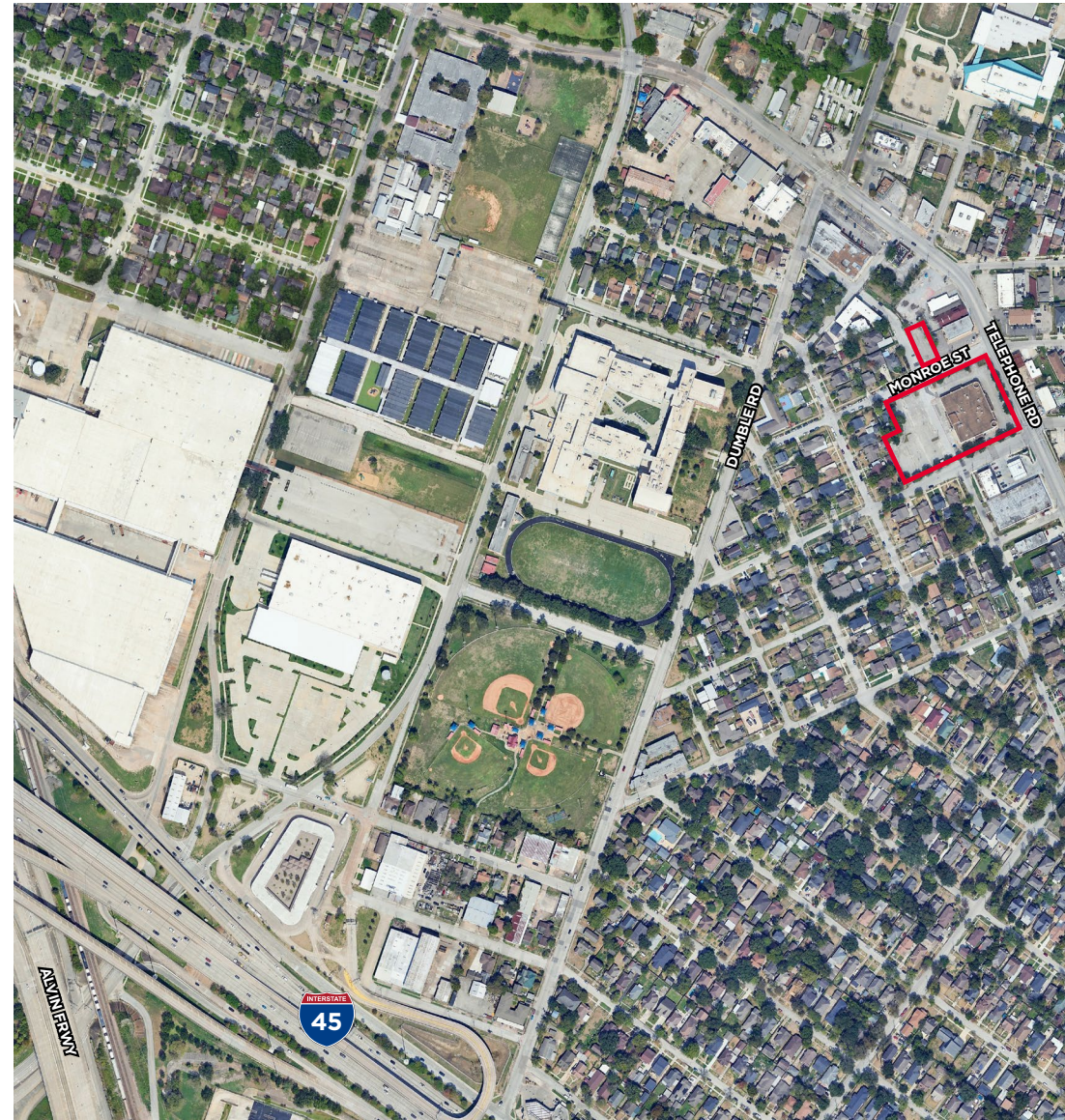
1102 TELEPHONE RD

HOUSTON, TX 77023

Property Highlights

- ±2.3 gross acres with 41,580 SF building (built in 1939)
- Located in Greater Eastwood - Super Neighborhood 64
- Three tracts, including an abandoned street, creating larger tract
- Located in Opportunity Zone
- Located near a Metro Bus Route stop
- No floodplain
- ±250' of frontage on Telephone Rd
- Walkable to schools and parks

APN: 0220900000001, 0220850000001, 0220820000017



KRISTEN MCDADE

Managing Director

+1 713 331 1796

kristen.mcdade@cushwake.com

MATTHEW DAVIS

Senior Director

+1 713 331 1798

matthew.davis@cushwake.com

MELISSA ELIZONDO

Brokerage Specialist

+1 346 396 4008

melissa.elizondo@cushwake.com



1330 Post Oak Blvd, Suite 2600 Houston, TX
www.cushmanwakefield.com