

SUMMARY

AERIAL

SITE PLAN

RETAILER MAP

FLOOD MAP

DEMOGRAPHICS

PROPERTY OVERVIEW

Johnny Smith Memorial Business Park is Slidell's premier modern industrial park, strategically located just off I-12 and Highway 11. Designed to stand apart from traditional industrial zones, the park features newly built, state-of-the-art facilities in a highly accessible location.

Each lot measures approximately one acre, with the flexibility to combine parcels for larger developments of up to four contiguous acres. Utilities are already in place across the entire six acres, with four acres cleared and construction-ready — making this an ideal opportunity for businesses seeking efficiency, visibility, and growth potential.

PRICE

- \$3.72 - \$4.25 PSF

ZONING

- Industrial

SIZE

- 1.02-6.29 Acres
- 6 lots available

EXISTING TENANTS

- American Tire Distributors
- O'Brien Flooring, Inc.
- Beier Integrated Systems
- Sunny Sod
- International Brotherhood of Boilermakers
- Bec Co-Packers
- Johnstone Supply
- Stratum Engineering

PROPERTY HIGHLIGHTS

- No Impact Fees
- Subdivisible
- Industrial Park
- Power: Cleco Power, LLC
- Natural Gas: Atmos Energy
- Water/Sewer: Resolve Systems, Inc
- Tellico: AT&T, Charter
- Fiber Optic: Yes



SUMMARY

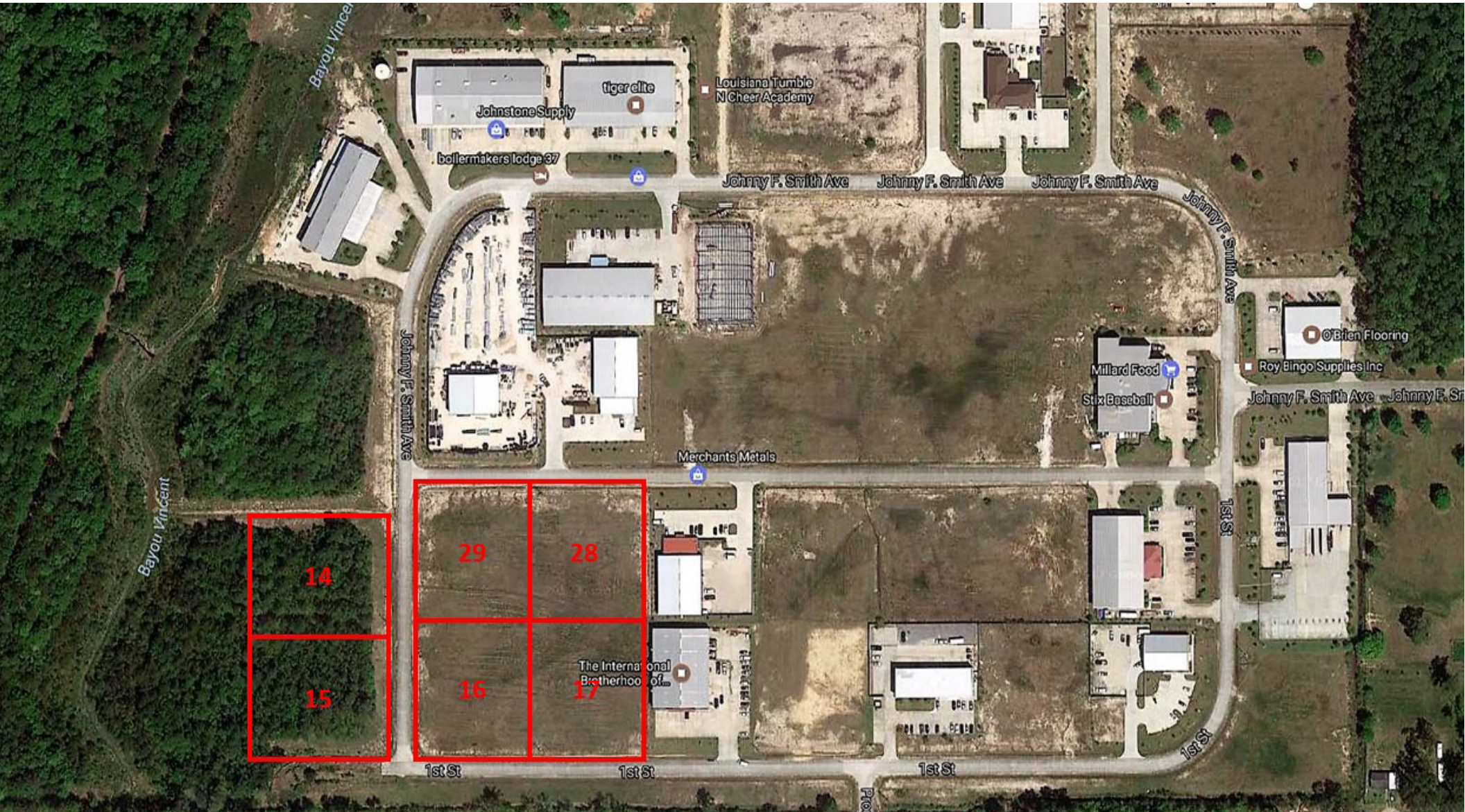
AERIAL

SITE PLAN

RETAILER MAP

FLOOD MAP

DEMOGRAPHICS



stirling

DANIEL COOK

Office: 985-898-2022

Direct: 985-246-3795

dcook@stirlingprop.com

BRADLEY COOK, CCIM

Office: 985-898-2022

Direct: 985-246-3720

bcook@stirlingprop.com

JOHNNY F. SMITH

INDUSTRIAL PARK

Johnny Smith Memorial Business Park, Slidell, LA

SUMMARY

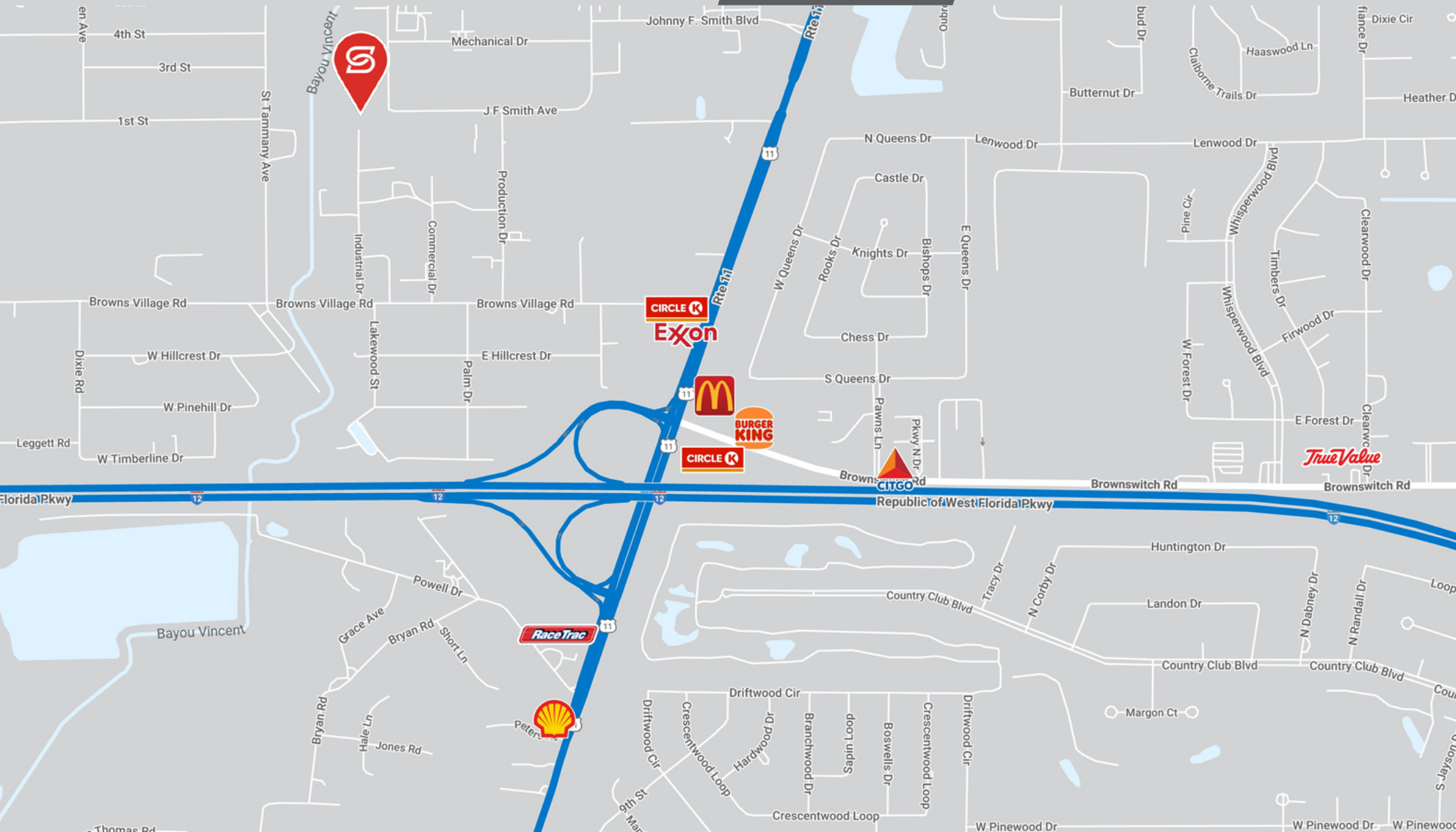
AERIAL

SITE PLAN

RETAILER MAP

FLOOD MAP

DEMOGRAPHICS





SUMMARY

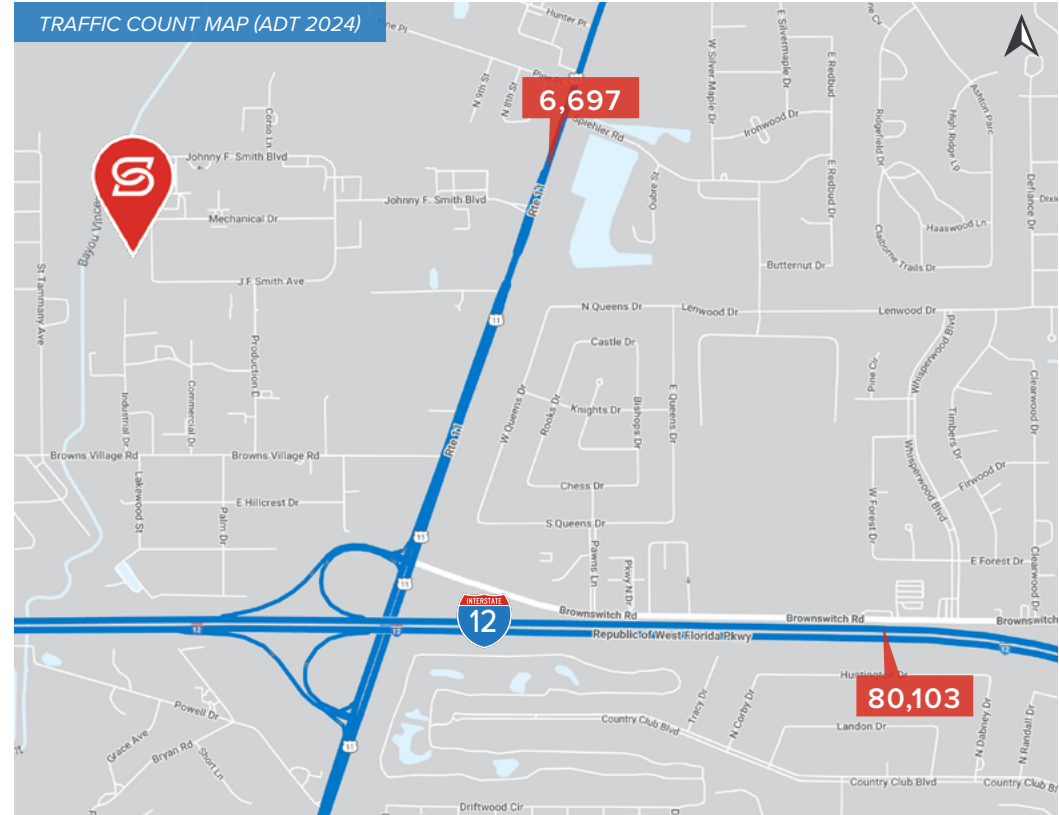
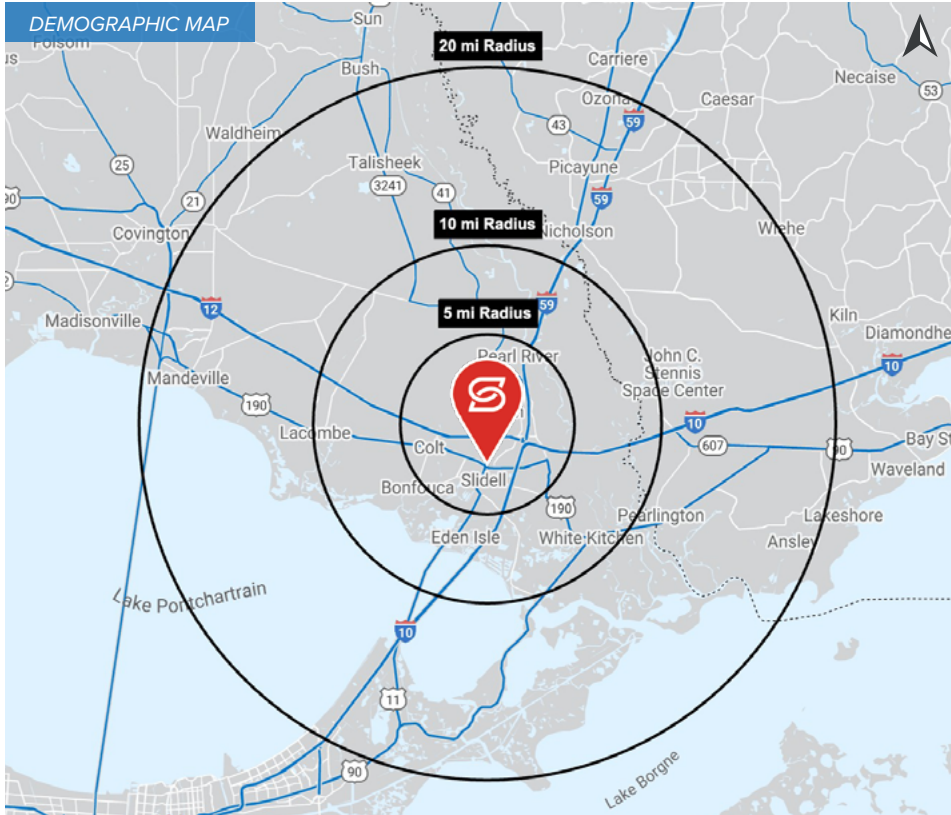
AERIAL

SITE PLAN

RETAILER MAP

FLOOD MAP

DEMOGRAPHICS



2025 DEMOGRAPHICS

5 MILE

10 MILE

20 MILE



81,873

116,892

218,277

5 MILE

10 MILE

20 MILE



\$95,066

\$99,992

\$101,140

5 MILE

10 MILE

20 MILE



31,593

45,671

85,878