

±4.77 ACRE CONTRACTORS YARD
FOR LEASE/SALE
8424 COTTONWOOD AVE, FONTANA

SITE
±4.77 ACRES

COTTONWOOD AVE

ARROW RTE



**LEE &
ASSOCIATES**

COMMERCIAL REAL ESTATE SERVICES
ONTARIO

DON KAZANJIAN

President & Principal
Lee & Associates | Ontario
dkazanjian@lee-assoc.com
D 909.373.2929 | DRE # 00860886

JOHN MARTIN

Vice President & Principal
Lee & Associates | Ontario
jmartin@lee-assoc.com
D 909.373.2941 | DRE # 01346629

CHRIS COYTE

Vice President & Principal
Lee & Associates | Ontario
ccoyle@lee-assoc.com
D 909.373.2935 | DRE # 01017328

All information furnished regarding property for sale, rental or financing is from sources deemed reliable, but no warranty or representation is made to the accuracy thereof and same is submitted to errors, omissions, change of price, rental or other conditions prior to sale, lease or financing or withdrawal without notice. No liability of any kind is to be imposed on the broker herein.

PROPERTY HIGHLIGHTS

- ±4.77 Acre Contractors Yard
- Fenced, Secured, & Gated Yard
- Site Dimensions 330' x 630'
- Assessor's Parcel No. 0229-082-30
- Close Proximity to I-15, I-10, I-210 Freeways
- Zoning: IC - Community Industrial (Verify)

Explore Links Below:

Permitted Uses

Conditions of Approval

Tax Map

Soils Report

Grading Permit

Street Improvement Plans



DON KAZANJIAN

President & Principal
Lee & Associates | Ontario
dkazanjan@lee-assoc.com
D 909.373.2929 | DRE # 00860886

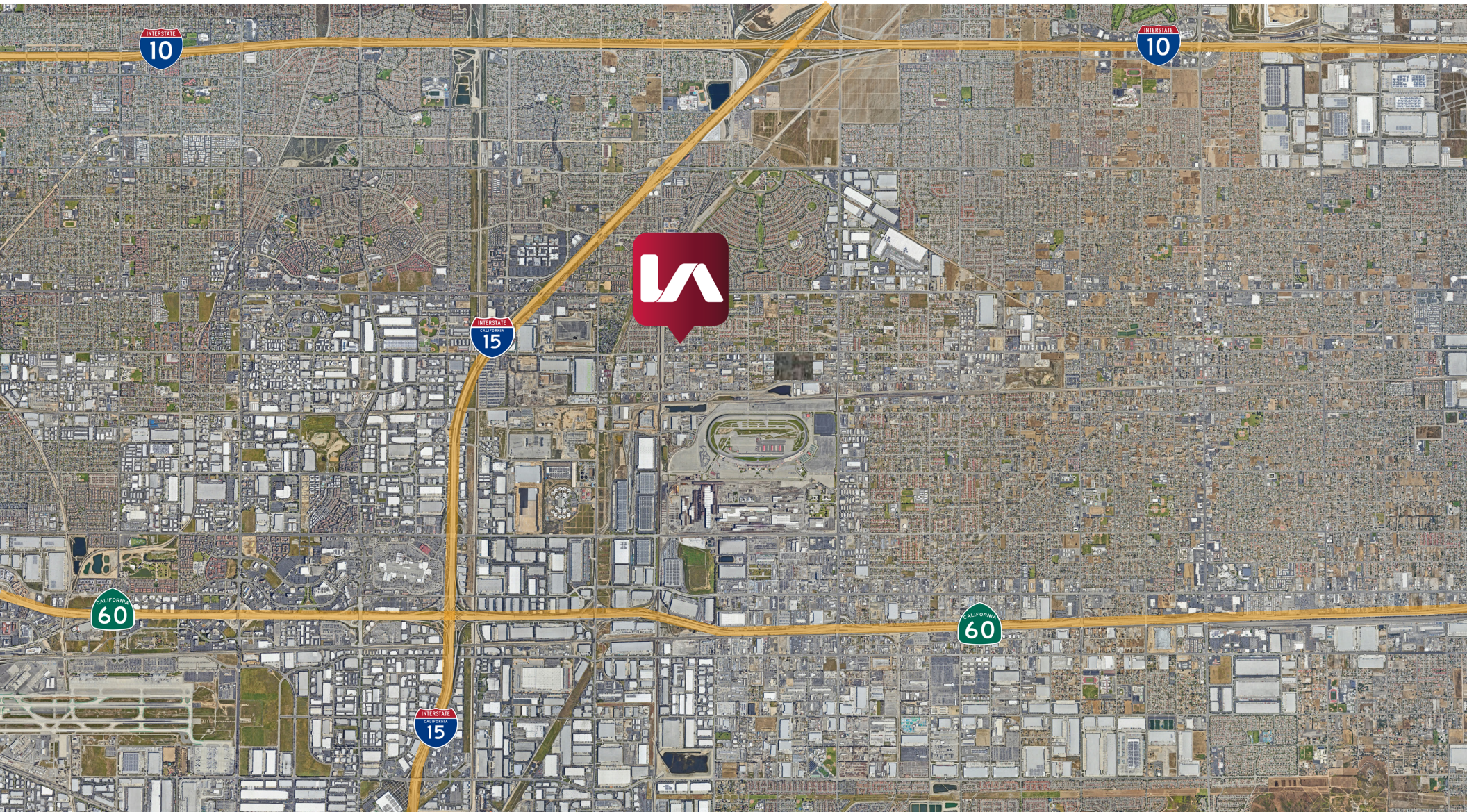
JOHN MARTIN

Vice President & Principal
Lee & Associates | Ontario
jmartin@lee-assoc.com
D 909.373.2941 | DRE # 01346629

CHRIS COYTE

Vice President & Principal
Lee & Associates | Ontario
ccoyle@lee-assoc.com
D 909.373.2935 | DRE # 01017328

±4.77 ACRE CONTRACTORS YARD | 8424 COTTONWOOD AVE, FONTANA



 **LEE &
ASSOCIATES**
COMMERCIAL REAL ESTATE SERVICES
ONTARIO

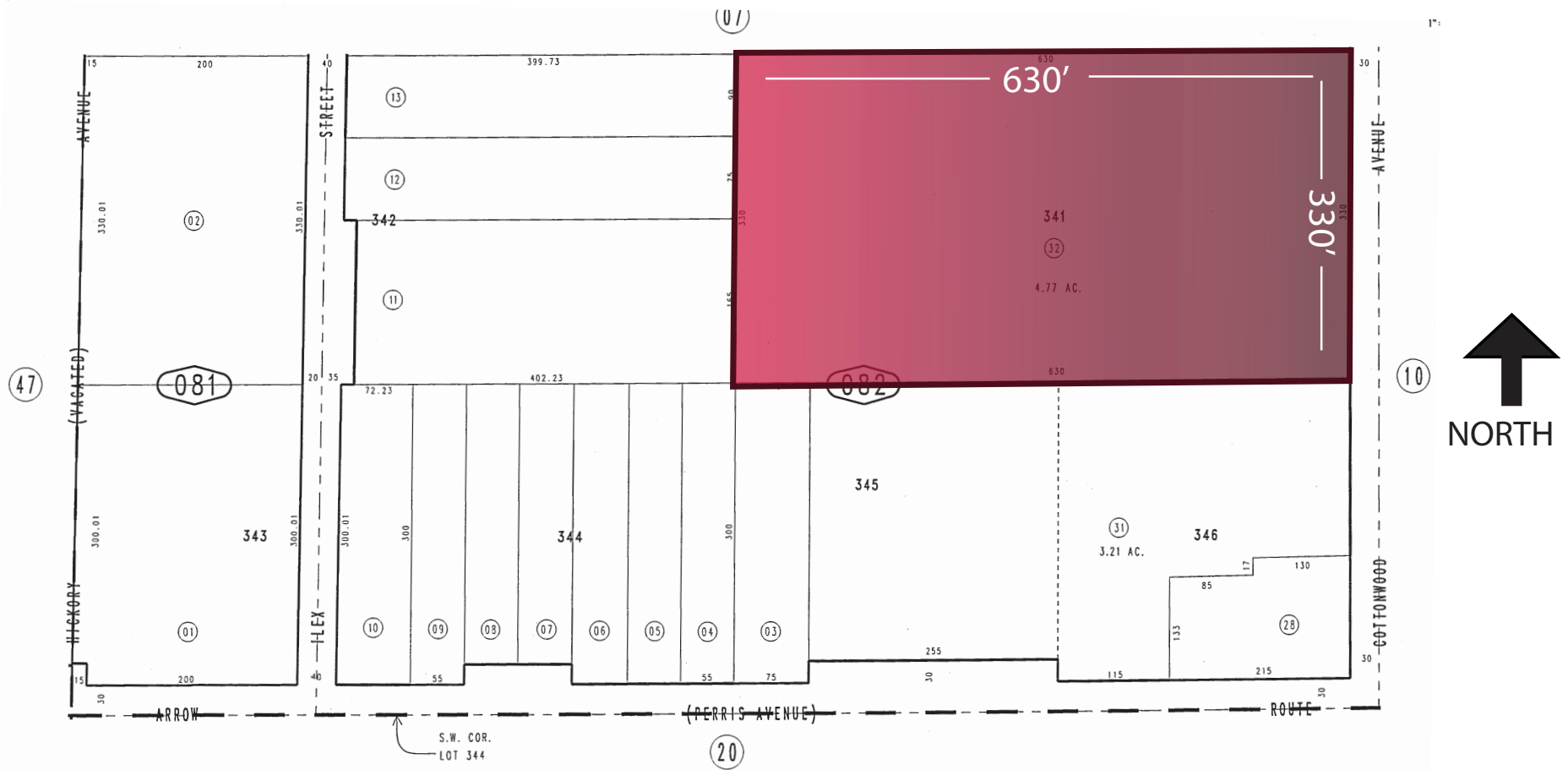
DON KAZANJIAN
President & Principal
Lee & Associates | Ontario
dkazanjan@lee-assoc.com
D 909.373.2929 | DRE # 00860886

JOHN MARTIN
Vice President & Principal
Lee & Associates | Ontario
jmartin@lee-assoc.com
D 909.373.2941 | DRE # 01346629

CHRIS COYTE
Vice President & Principal
Lee & Associates | Ontario
ccoyle@lee-assoc.com
D 909.373.2935 | DRE # 01017328

All information furnished regarding property for sale, rental or financing is from sources deemed reliable, but no warranty or representation is made to the accuracy thereof and same is submitted to errors, omissions, change of price, rental or other conditions prior to sale, lease or financing or withdrawal without notice. No liability of any kind is to be imposed on the broker herein.

±4.77 ACRE CONTRACTORS YARD | 8424 COTTONWOOD AVE, FONTANA



LEE & ASSOCIATES
 COMMERCIAL REAL ESTATE SERVICES
 ONTARIO

DON KAZANJIAN
 President & Principal
 Lee & Associates | Ontario
 dkazanjan@lee-assoc.com
 D 909.373.2929 | DRE # 00860886

JOHN MARTIN
 Vice President & Principal
 Lee & Associates | Ontario
 jmartin@lee-assoc.com
 D 909.373.2941 | DRE # 01346629

CHRIS COYTE
 Vice President & Principal
 Lee & Associates | Ontario
 ccoyte@lee-assoc.com
 D 909.373.2935 | DRE # 01017328

All information furnished regarding property for sale, rental or financing is from sources deemed reliable, but no warranty or representation is made to the accuracy thereof and same is submitted to errors, omissions, change of price, rental or other conditions prior to sale, lease or financing or withdrawal without notice. No liability of any kind is to be imposed on the broker herein.