

LAND FOR SALE

MAHA LOOP LOTS 1-4

MAHA LOOP ROAD, AUSTIN, TX



FOR SALE

KW COMMERCIAL - GLOBAL

1221 South MoPac Expressway
Austin, TX 78746



Each Office Independently Owned and Operated

PRESENTED BY:

LUKE LEGRAND

Director
O: (210) 843-5853
luke@kwcommercialsa.com
TX License #561816

CODY MURPHY

Agent
O: 361-215-7457
cody@kwcommercialsa.com
Tx. #778764

We obtained the information above from sources we believe to be reliable. However, we have not verified its accuracy and make no guarantee, warranty or representation about it. It is submitted subject to the possibility of errors, omissions, change of price, rental or other conditions, prior sale, lease or financing, or withdrawal without notice. We include projections, opinions, assumptions or estimates for example only, and they may not represent current or future performance of the property. You and your tax and legal advisors should conduct your own investigation of the property and transaction.

EXECUTIVE SUMMARY

11200 MAHA LOOP ROAD



OFFERING SUMMARY

PRICE:	\$3,500,000.00
LOT SIZE:	+/- 33.259 SF
PRICE / ACRE:	Contact Broker
ACCESS:	Hwy 130 & Maha Loop
ZONING:	ETJ
FRONTAGE:	~3000 FT
UTILITIES:	Y

PROPERTY OVERVIEW

Located off Maha Loop within mins of Highway 130 in East Austin offers a corner parcel is broken down into 4 lots. This prime property is not only located within a Texas Opportunity Zone but also enjoys close proximity to key landmarks, including the Tesla Gigafactory, Austin-Bergstrom International Airport, and the F1 Circuit of the Americas.



KW COMMERCIAL - GLOBAL
1221 South MoPac Expressway
Austin, TX 78746



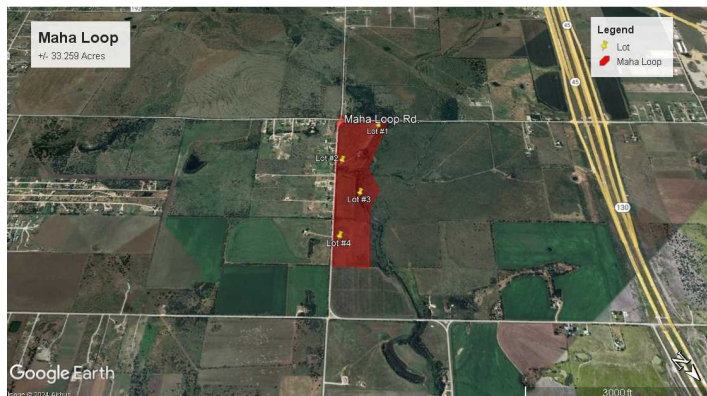
Each Office Independently Owned and Operated

LUKE LEGRAND
Director
O: (210) 843-5853
luke@kwcommercialsa.com
TX License #561816

CODY MURPHY
Agent
O: 361-215-7457
cody@kwcommercialsa.com
Tx. #778764

LOCATION & HIGHLIGHTS

11200 MAHA LOOP ROAD

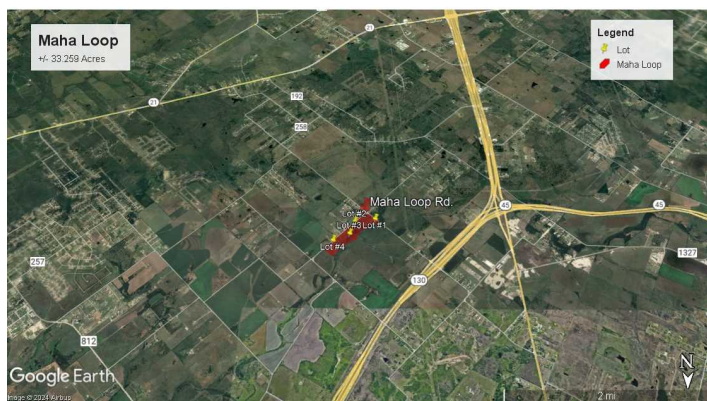


LOCATION INFORMATION

Building Name: Maha Loop
Street Address: 11016-11022 Maha Loop Rd.
City, State, Zip: Austin, Tx, 78719
County: Travis
Market: Austin
Sub-market: Mustang Ridge
Cross Streets: Maha Loop & Maha Rd.

LOCATION OVERVIEW

Corner wrap around lot all frontage on Maha Loop and Maha road and only mins away from fast growing area Del Valle in east Austin. Telsa Gigafactory less than 9 miles west of the parcel with ease of access to Toll Rd 130. Circuit of Americas, Austin International Airport, & Downtown Austin all within 25 mins of the property.



PROPERTY HIGHLIGHTS

- Located 2 miles east of Hwy 130
- 3 miles east of Hwy 183
- 7 miles east of Hwy 71
- Less than 30 mins from Downtown Austin
- 20 minutes from Buda



KW COMMERCIAL - GLOBAL
1221 South MoPac Expressway
Austin, TX 78746



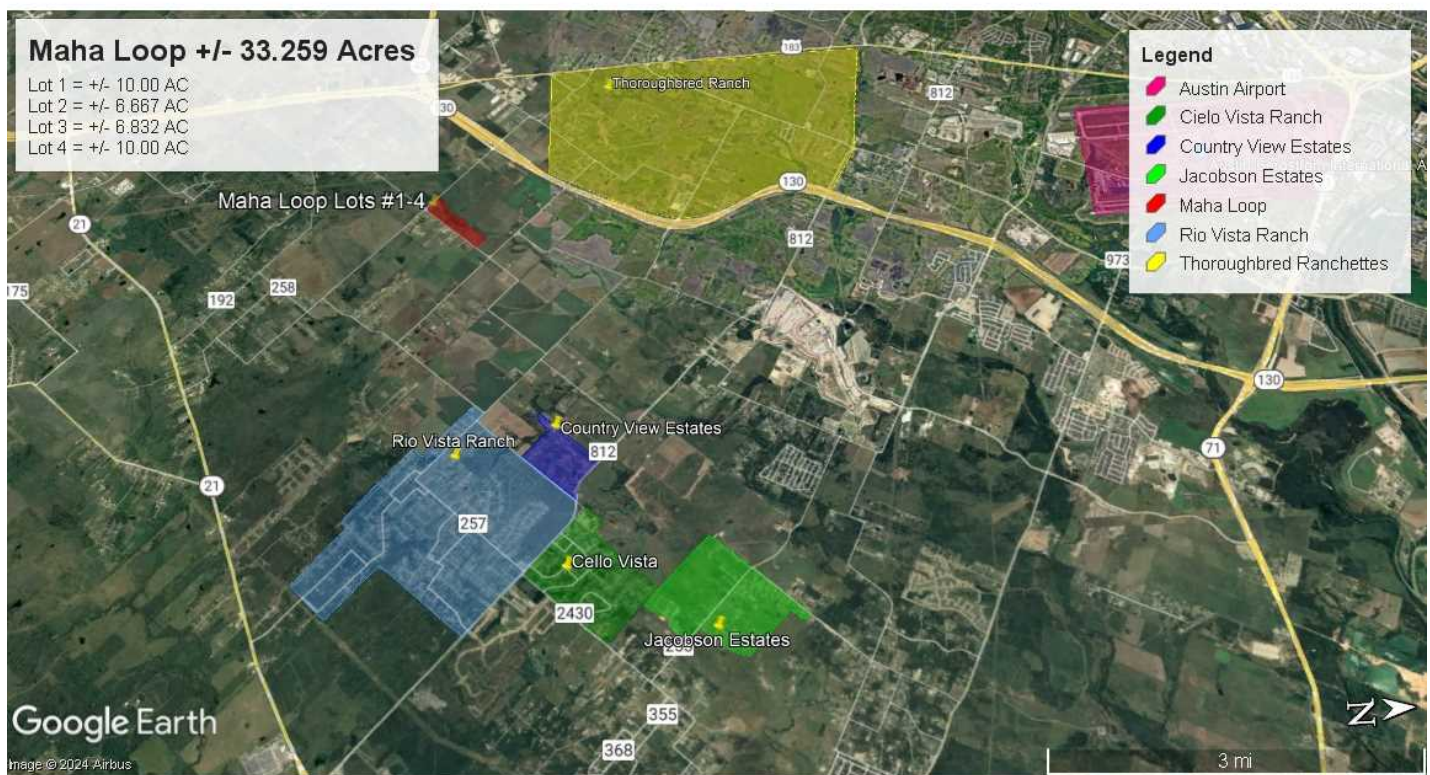
Each Office Independently Owned and Operated

LUKE LEGRAND
Director
O: (210) 843-5853
luke@kwcommercialsa.com
TX License #561816

CODY MURPHY
Agent
O: 361-215-7457
cody@kwcommercialsa.com
Tx. #778764

PROPERTY PHOTOS

11200 MAHA LOOP ROAD



KW COMMERCIAL - GLOBAL
1221 South MoPac Expressway
Austin, TX 78746



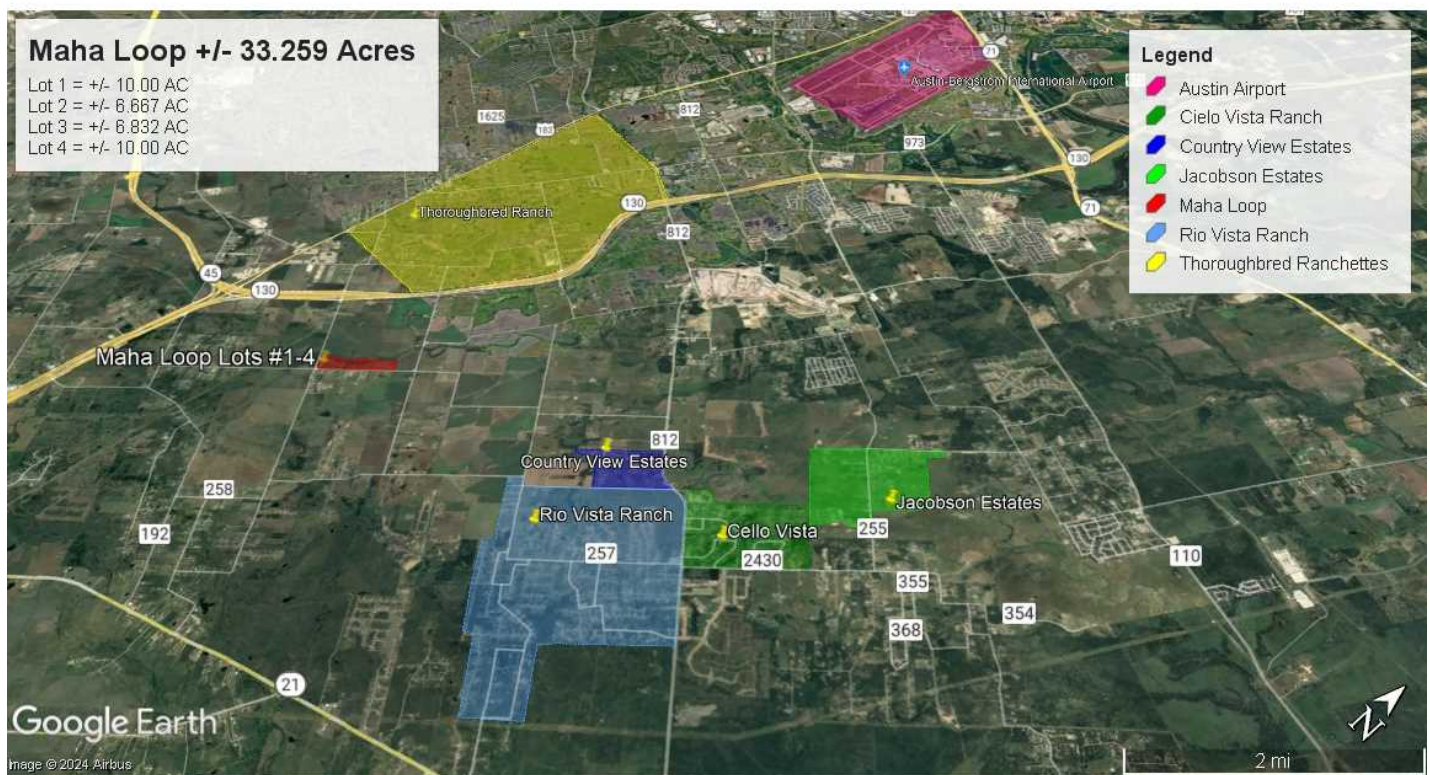
Each Office Independently Owned and Operated

LUKE LEGRAND
Director
O: (210) 843-5853
luke@kwcommercialsa.com
TX License #561816

CODY MURPHY
Agent
O: 361-215-7457
cody@kwcommercialsa.com
Tx. #778764

PROPERTY PHOTOS

11200 MAHA LOOP ROAD



KW COMMERCIAL - GLOBAL
1221 South MoPac Expressway
Austin, TX 78746



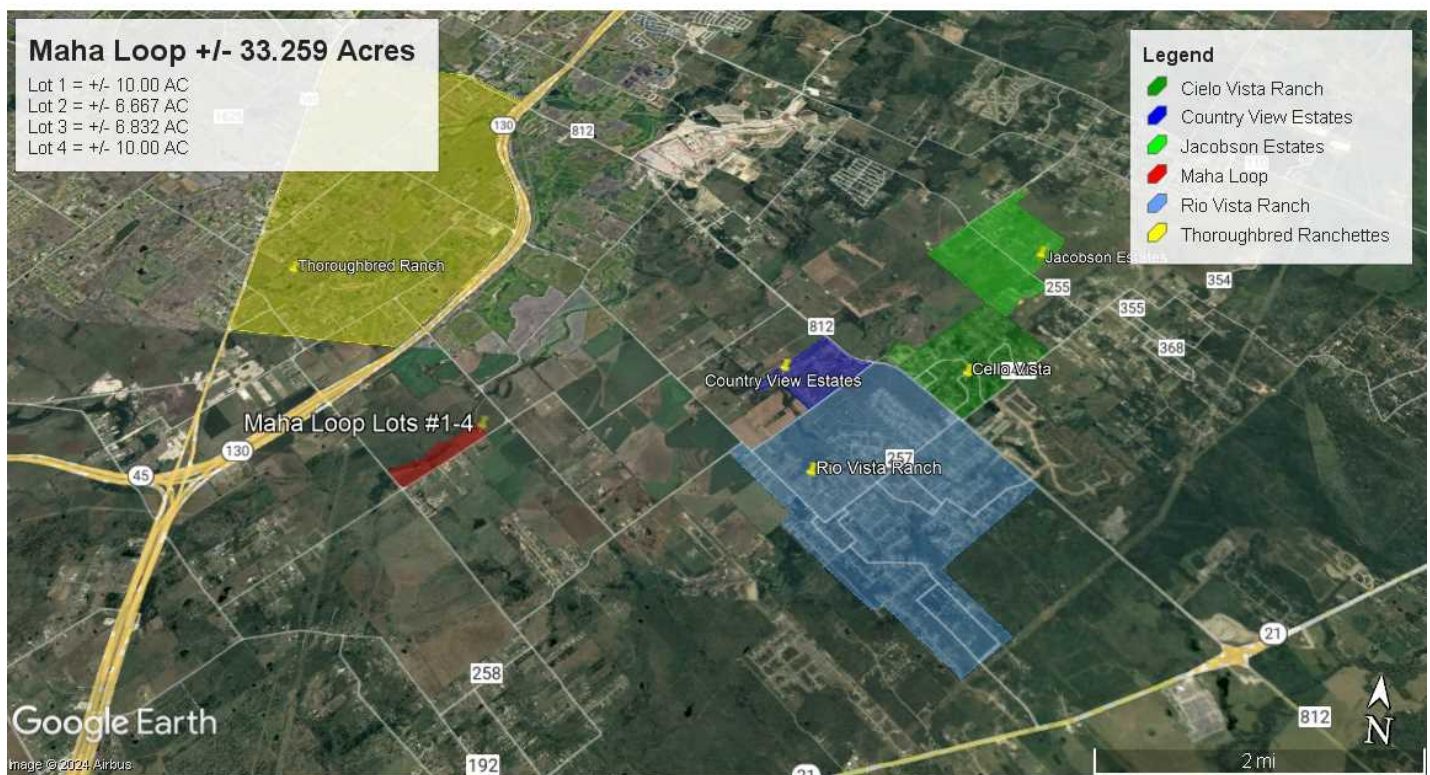
Each Office Independently Owned and Operated

LUKE LEGRAND
Director
O: (210) 843-5853
luke@kwcommercialsa.com
TX License #561816

CODY MURPHY
Agent
O: 361-215-7457
cody@kwcommercialsa.com
Tx. #778764

PROPERTY PHOTOS

11200 MAHA LOOP ROAD



KW COMMERCIAL - GLOBAL
1221 South MoPac Expressway
Austin, TX 78746



Each Office Independently Owned and Operated

LUKE LEGRAND
Director
O: (210) 843-5853
luke@kwcommercialsa.com
TX License #561816

CODY MURPHY
Agent
O: 361-215-7457
cody@kwcommercialsa.com
Tx. #778764

PROPERTY PHOTOS

11200 MAHA LOOP ROAD



KW COMMERCIAL - GLOBAL
1221 South MoPac Expressway
Austin, TX 78746



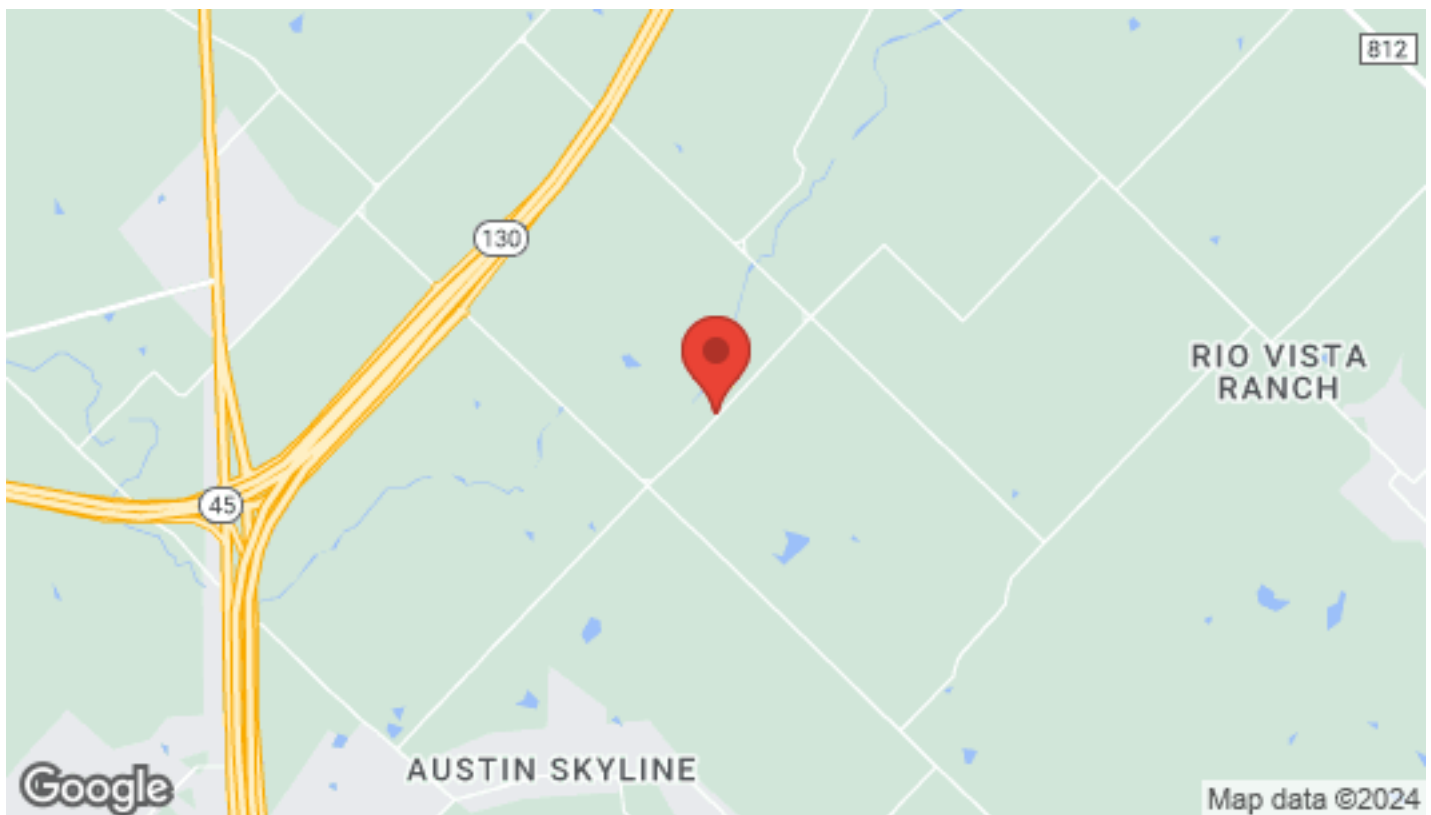
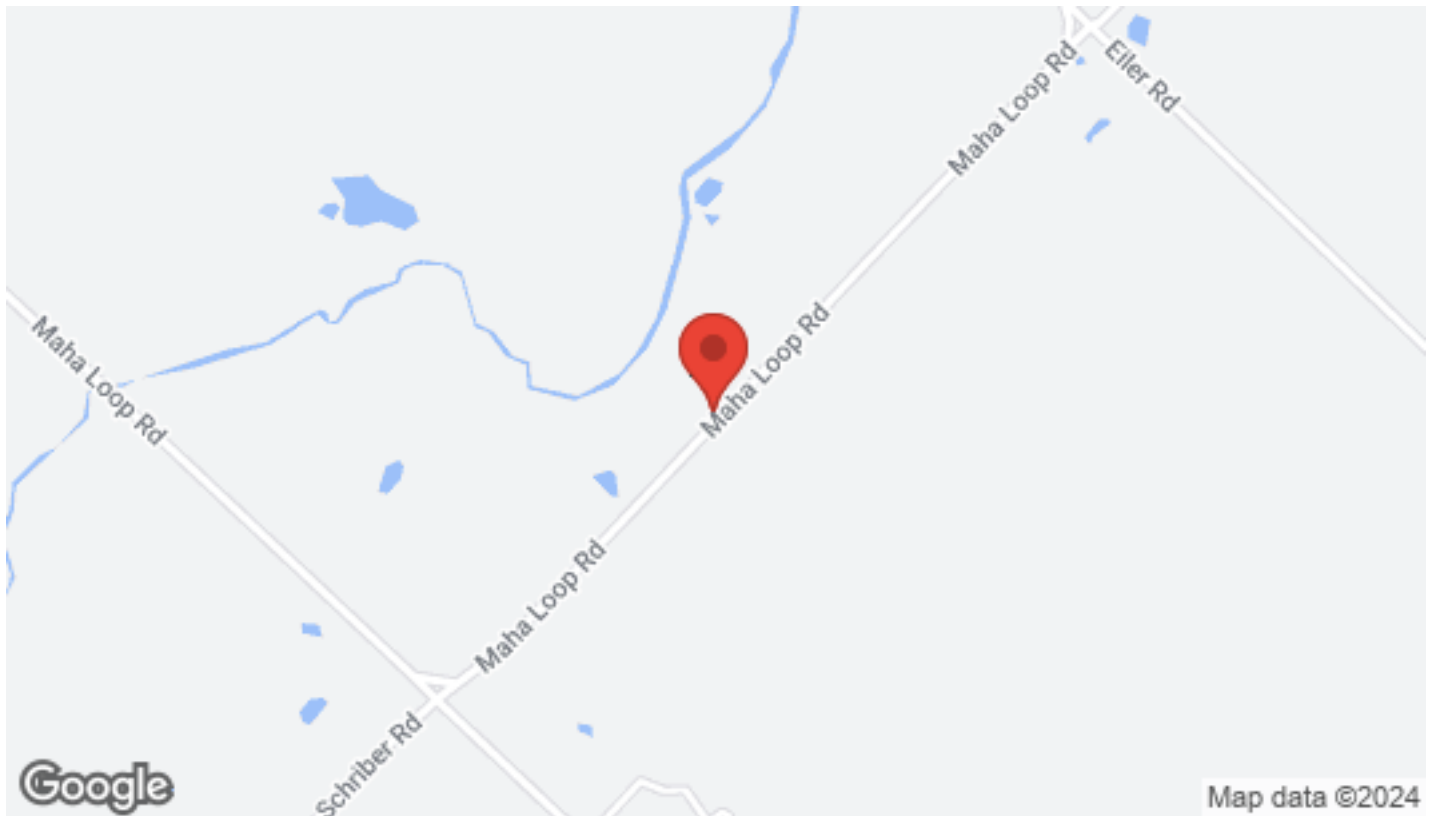
Each Office Independently Owned and Operated

LUKE LEGRAND
Director
O: (210) 843-5853
luke@kwcommercialsa.com
TX License #561816

CODY MURPHY
Agent
O: 361-215-7457
cody@kwcommercialsa.com
Tx. #778764

LOCATION MAPS

11200 MAHA LOOP ROAD



KW COMMERCIAL - GLOBAL
1221 South MoPac Expressway
Austin, TX 78746



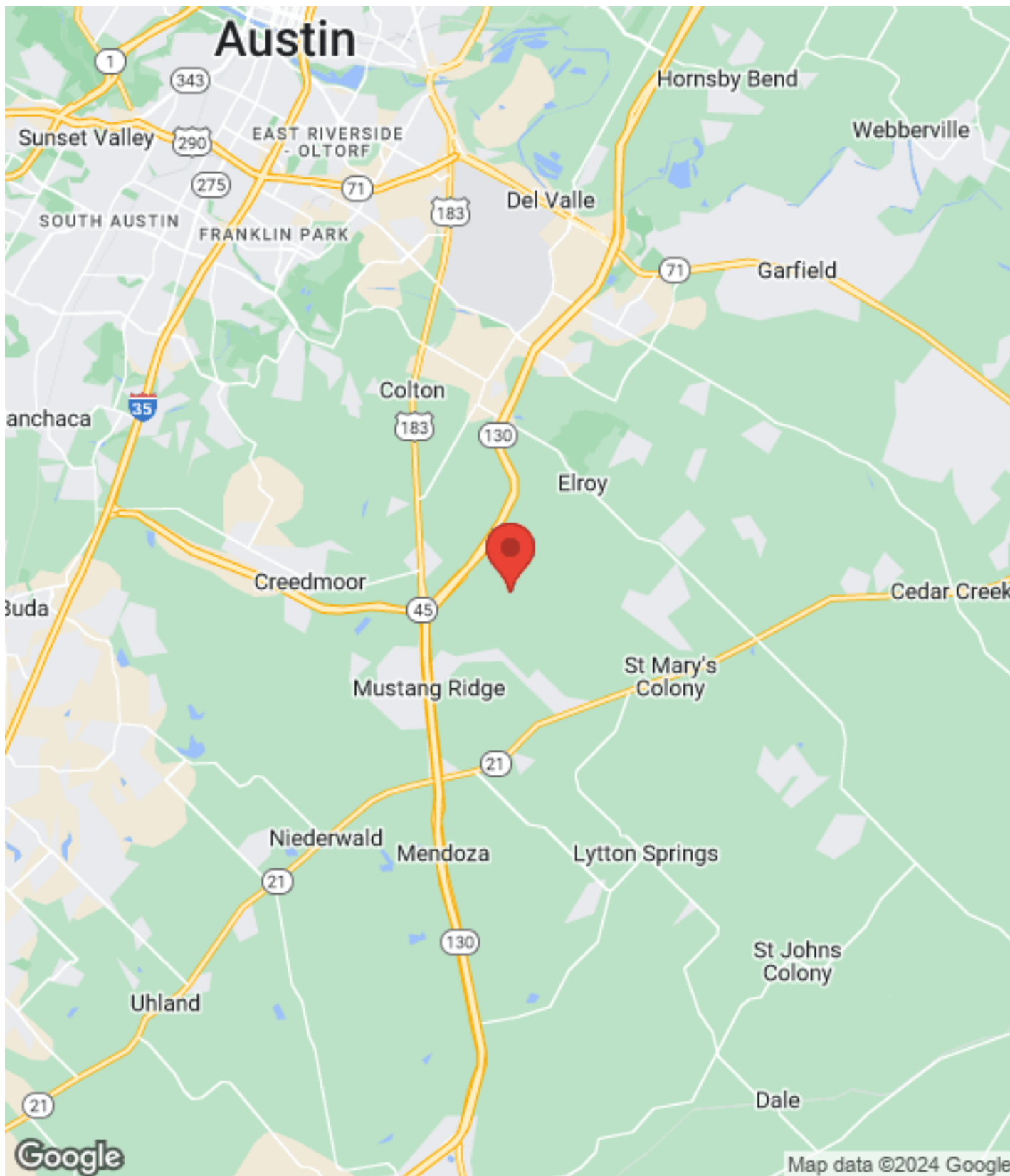
Each Office Independently Owned and Operated

LUKE LEGRAND
Director
O: (210) 843-5853
luke@kwcommercialsa.com
TX License #561816

CODY MURPHY
Agent
O: 361-215-7457
cody@kwcommercialsa.com
Tx. #778764

REGIONAL MAP

11200 MAHA LOOP ROAD



KW COMMERCIAL - GLOBAL
1221 South MoPac Expressway
Austin, TX 78746



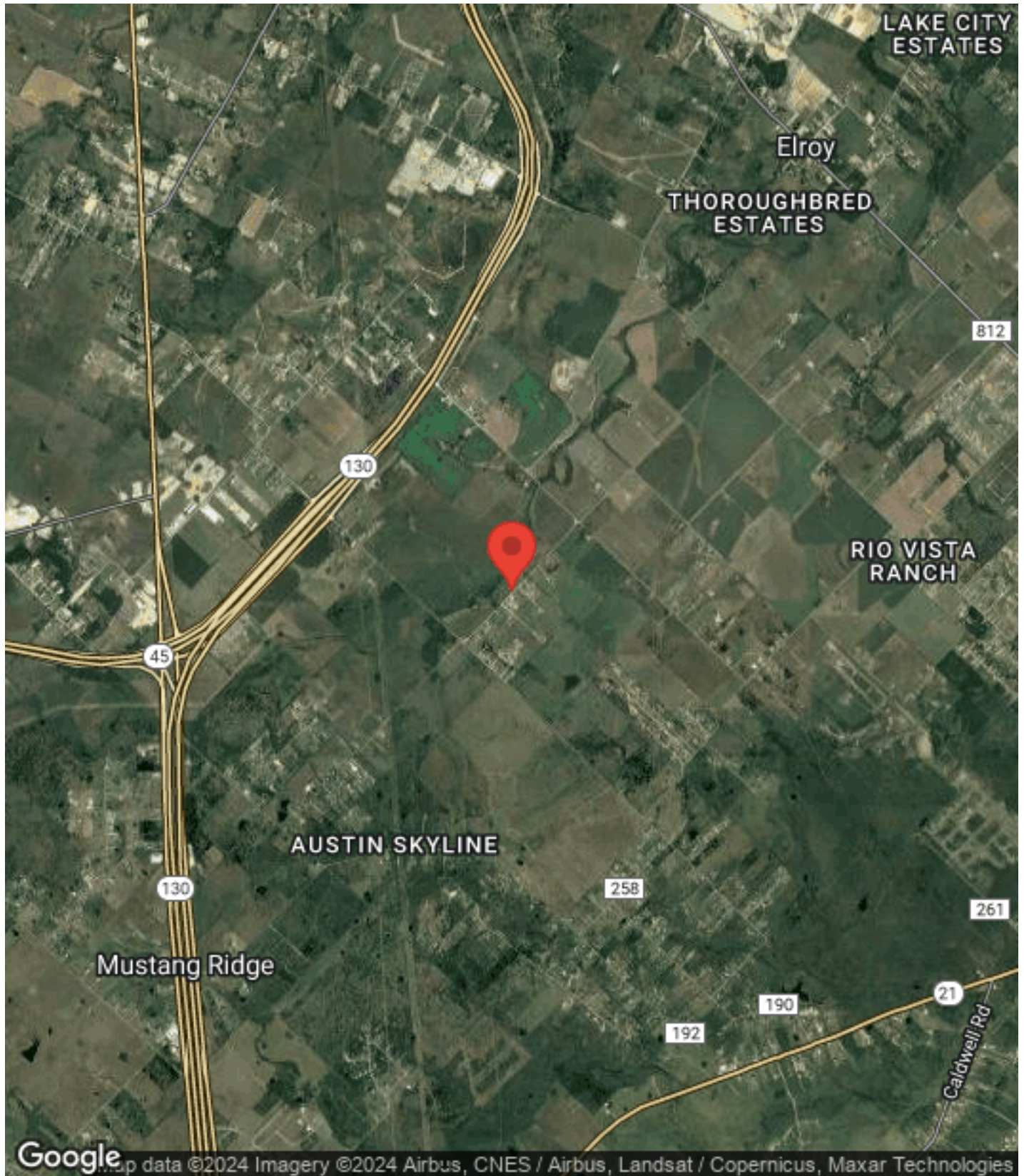
Each Office Independently Owned and Operated

LUKE LEGRAND
Director
O: (210) 843-5853
luke@kwcommercialsa.com
TX License #561816

CODY MURPHY
Agent
O: 361-215-7457
cody@kwcommercialsa.com
Tx. #778764

AERIAL MAP

11200 MAHA LOOP ROAD



KW COMMERCIAL - GLOBAL
1221 South MoPac Expressway
Austin, TX 78746



Each Office Independently Owned and Operated

LUKE LEGRAND
Director
O: (210) 843-5853
luke@kwcommercialsa.com
TX License #561816

CODY MURPHY
Agent
O: 361-215-7457
cody@kwcommercialsa.com
Tx. #778764

DEMOGRAPHICS

11200 MAHA LOOP ROAD



	1 Mile	3 Miles	5 Miles		1 Mile	3 Miles	5 Miles
Population				Income			
Male	N/A	1,458	3,270	Median	N/A	\$53,437	\$47,269
Female	N/A	1,524	3,684	< \$15,000	N/A	110	291
Total Population	N/A	2,982	6,954	\$15,000-\$24,999	N/A	21	106
				\$25,000-\$34,999	N/A	140	206
Age				\$35,000-\$49,999	N/A	165	440
Ages 0-14	N/A	774	1,879	\$50,000-\$74,999	N/A	279	427
Ages 15-24	N/A	463	1,120	\$75,000-\$99,999	N/A	88	292
Ages 25-54	N/A	1,198	2,740	\$100,000-\$149,999	N/A	50	160
Ages 55-64	N/A	257	629	\$150,000-\$199,999	N/A	N/A	28
Ages 65+	N/A	290	586	> \$200,000	N/A	22	22
				Housing			
Race				Total Units	N/A	1,015	2,240
White	N/A	1,796	4,346	Occupied	N/A	914	2,037
Black	N/A	78	120	Owner Occupied	N/A	669	1,520
Am In/AK Nat	N/A	13	40	Renter Occupied	N/A	245	517
Hawaiian	N/A	N/A	N/A	Vacant	N/A	101	203
Hispanic	N/A	2,344	5,508				
Multi-Racial	N/A	2,190	4,698				

KW COMMERCIAL - GLOBAL
1221 South MoPac Expressway
Austin, TX 78746



Each Office Independently Owned and Operated

LUKE LEGRAND

Director
O: (210) 843-5853
luke@kwcommercialsa.com
TX License #561816

CODY MURPHY

Agent
O: 361-215-7457
cody@kwcommercialsa.com
Tx. #778764

PROFESSIONAL BIO

11200 MAHA LOOP ROAD



LUKE LEGRAND

Director



KW Commercial - Global
1221 South MoPac Expressway
Austin, TX 78746
O: (210) 843-5853
luke@kwcommercialsa.com
TX License #561816