

### OFFERING SUMMARY

**LEASE RATE:** \$12-17 (NNN)  
**AVAILABLE SF:** 2,470-8,120 SF  
**ZONING:** C-2

### LOCATION OVERVIEW

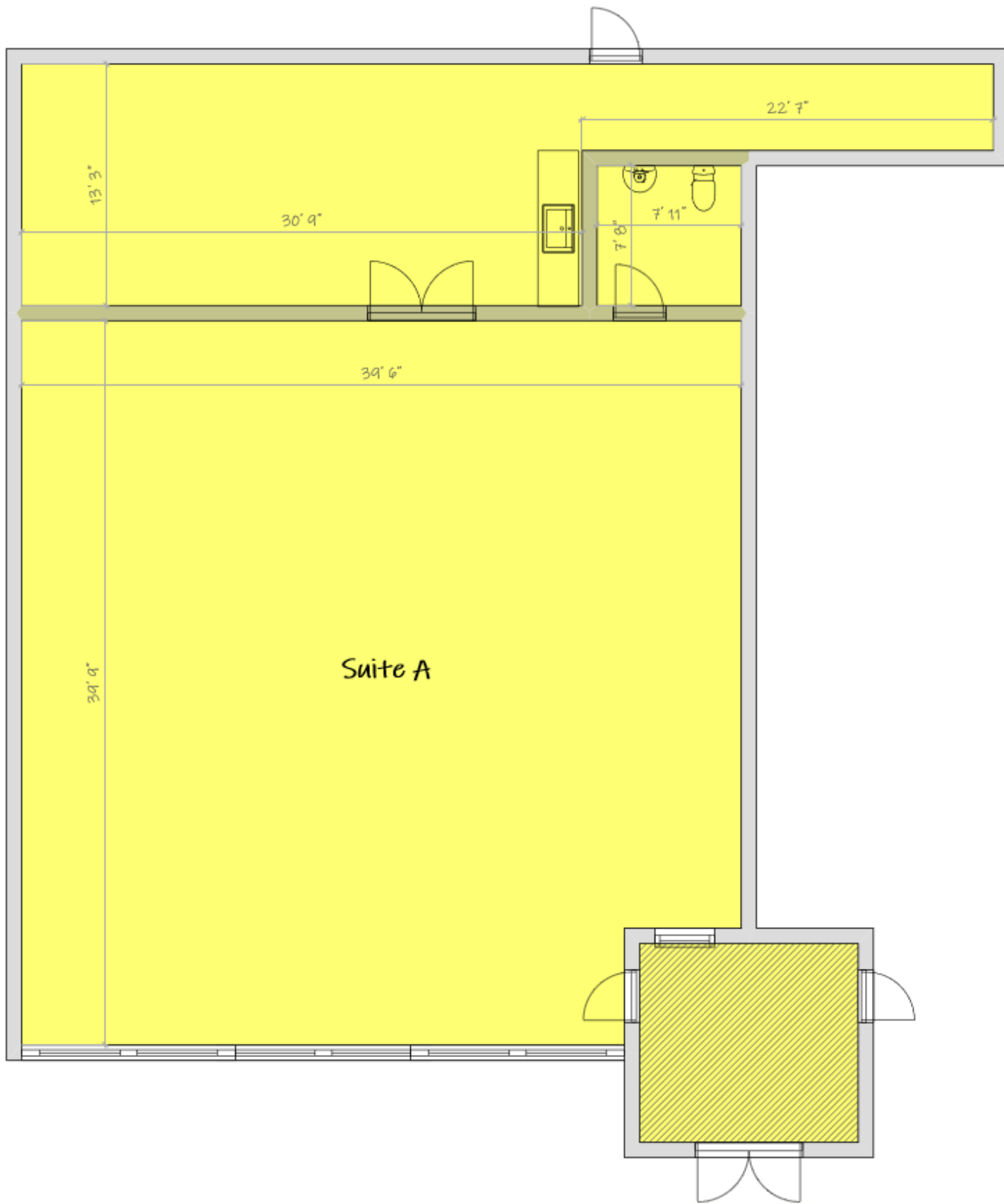
This space offers flexibility and versatility to accommodate your unique business needs, offering easy access to the I-94 and M14, while sitting just minutes from downtown Ann Arbor.

The front retail space can be tailored to fit the specific needs of your business and create an inviting atmosphere for your customers. and the back provides the storage, warehousing, and flex space, complete with a drive in door.

# West Ann Arbor Retail

5204 W Jackson Rd, MI 48103

Retail for Lease // Floorplan Suite A





# West Ann Arbor Retail

5204 W Jackson Rd, MI 48103

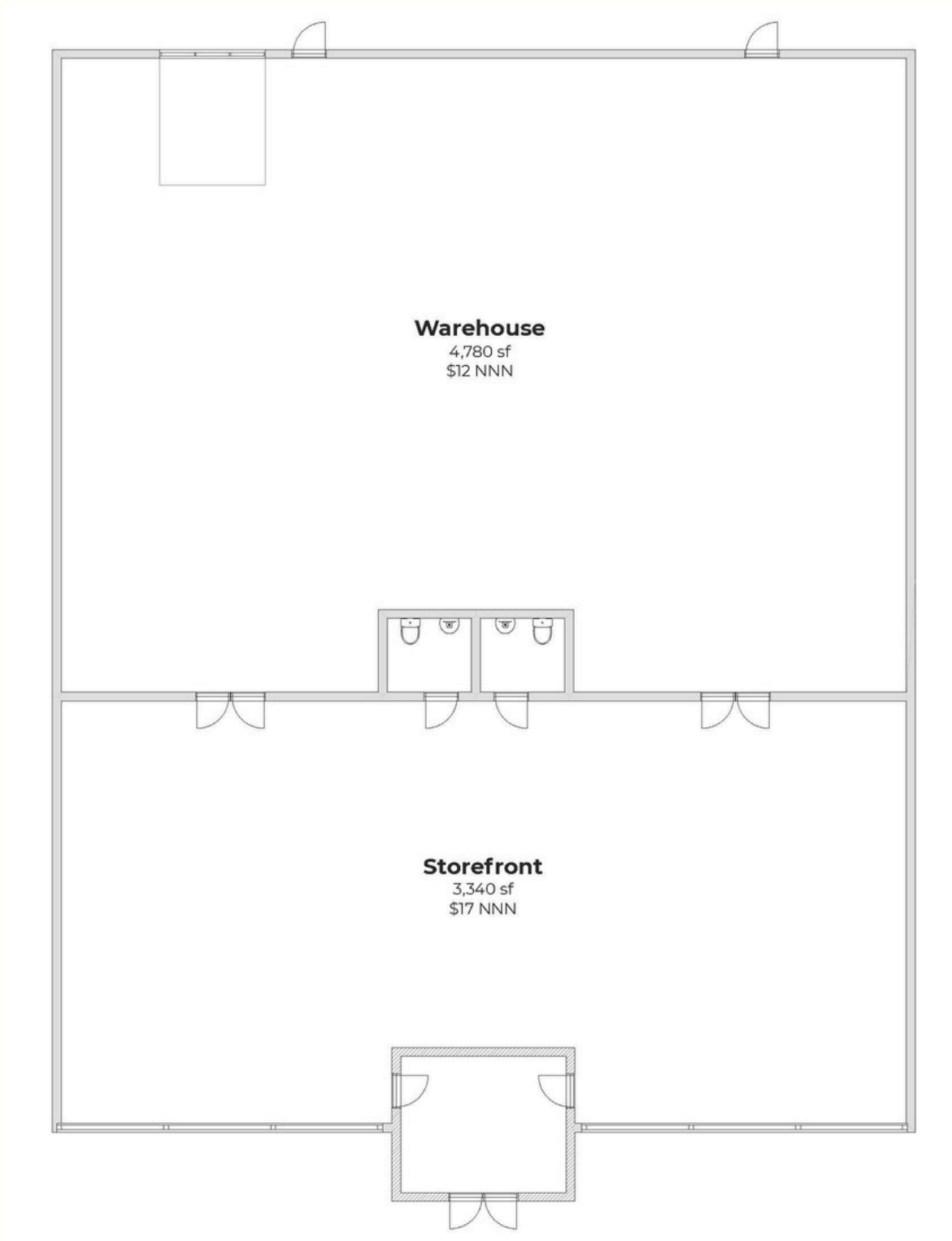
Retail for Lease // Photos Suite A



# West Ann Arbor Retail

5204 W Jackson Rd, MI 48103

Retail for Lease // Floorplan Suite B





# West Ann Arbor Retail

5204 W Jackson Rd, MI 48103

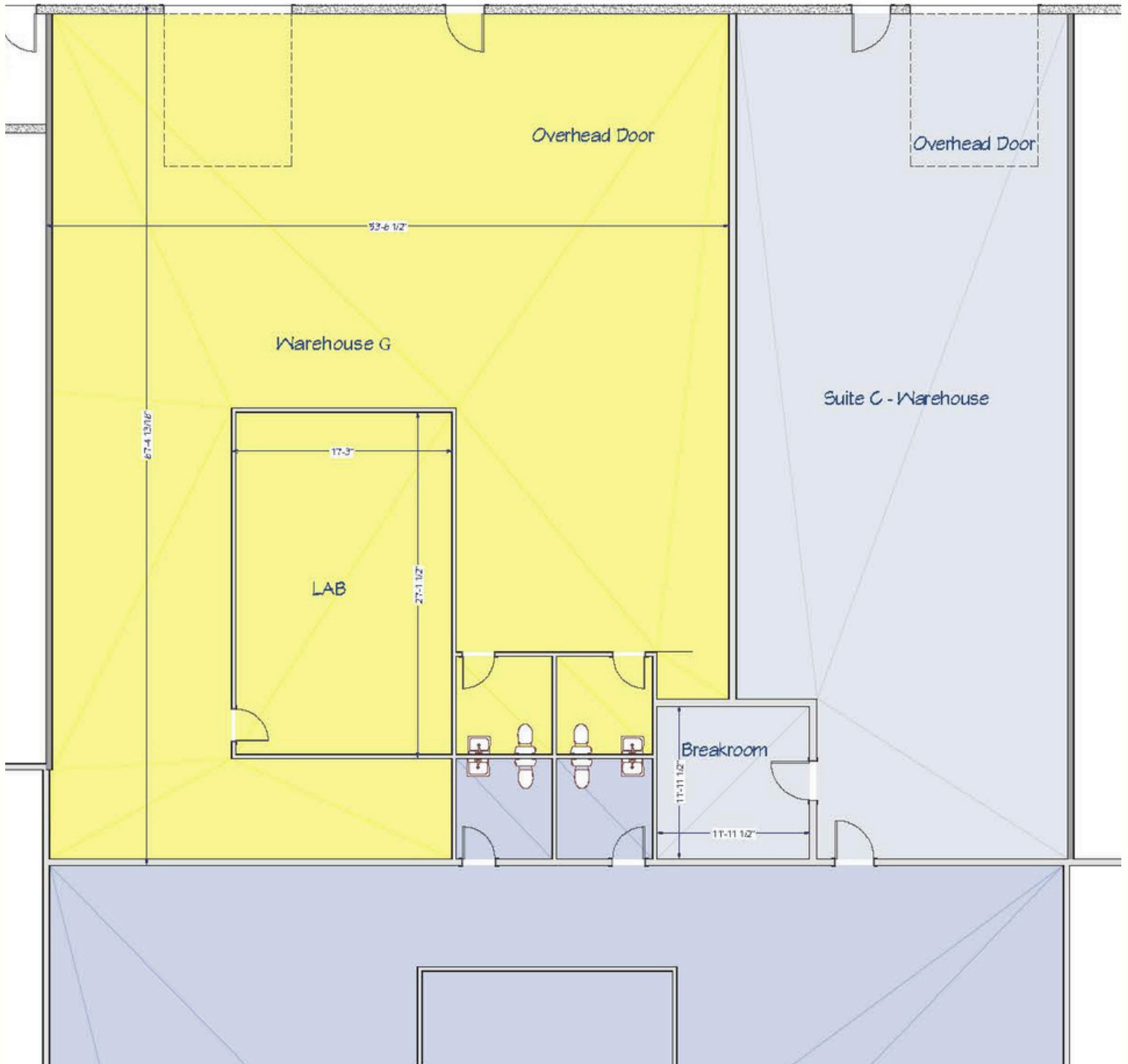
Retail for Lease // Photos Suite B



# West Ann Arbor Retail

5204 W Jackson Rd, MI 48103

Retail for Lease // Floorplan Suite G





# West Ann Arbor Retail

5204 W Jackson Rd, MI 48103

Retail for Lease // Photos Suite G



# West Ann Arbor Retail

5204 W Jackson Rd, MI 48103

---

Retail for Lease // Broker



---

## TYLER BURGOON

Broker / Operations Director

[tyler@jpcommercialre.com](mailto:tyler@jpcommercialre.com)

office 734 994 8800

cell 734 730 5633



JP COMMERCIAL REAL ESTATE (JPCRE) DOES NOT MAKE ANY REPRESENTATIONS OR WARRANTIES, EXPRESS OR IMPLIED, AS TO THE ACCURACY OR COMPLETENESS OF THE INFORMATION CONTAINED HEREIN, AND NOTHING CONTAINED HEREIN IS OR SHALL BE RELIED UPON AS A PROMISE OR REPRESENTATION AS TO THE FUTURE REPRESENTATION OF THE PROPERTY. THIS MAY INCLUDE CERTAIN STATEMENTS AND ESTIMATES WITH RESPECT TO THE PROPERTY. JPCRE DISCLAIMS ANY AND ALL LIABILITY FOR REPRESENTATIONS OR WARRANTIES, EXPRESSED OR IMPLIED, CONTAINED IN OR OMITTED INFORMATION. THE INFORMATION CONTAINED HEREIN IS SUBJECT TO CHANGE WITHOUT NOTICE AND THE RECIPIENT OF THESE MATERIALS SHALL NOT LOOK TO JPCRE OR THE JPCRE ADVISOR NOR ANY OF THEIR OFFICERS, EMPLOYEES, REPRESENTATIVES, INDEPENDENT CONTRACTORS OR AFFILIATES, FOR THE ACCURACY OR COMPLETENESS THEREOF.