

EAST WATER STREET
(OCEAN COUNTY ROUTE #627)

ROBBINS PARKWAY

DOVER TOWNSHIP MUNICIPAL PARKING LOT

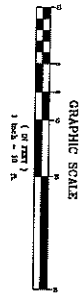
PROPOSED
2 STORY
OFFICE BUILDING
2,800 SF
F.F. = 800

LOT 47
2 STORY
FRAME STRUCTURE
(OFFICE)

LOT 46

LOT 50

1 STORY FRAME
BUILDING
NO. 10



Plan 200 - 2/10/10
1/11/10

GRAPHIC SCALE (1 inch = 10 feet)

DATE: 2/10/10 TIME: 11 AM
SITE: 47/46/45
SCALE OF PLOTTING: 1" = 10'-0"

NO.	REVISION	DATE	BY	CHKD.
1	ISSUED FOR PERMIT	1/11/10	MM	MM
2	ISSUED FOR CONSTRUCTION	2/10/10	MM	MM

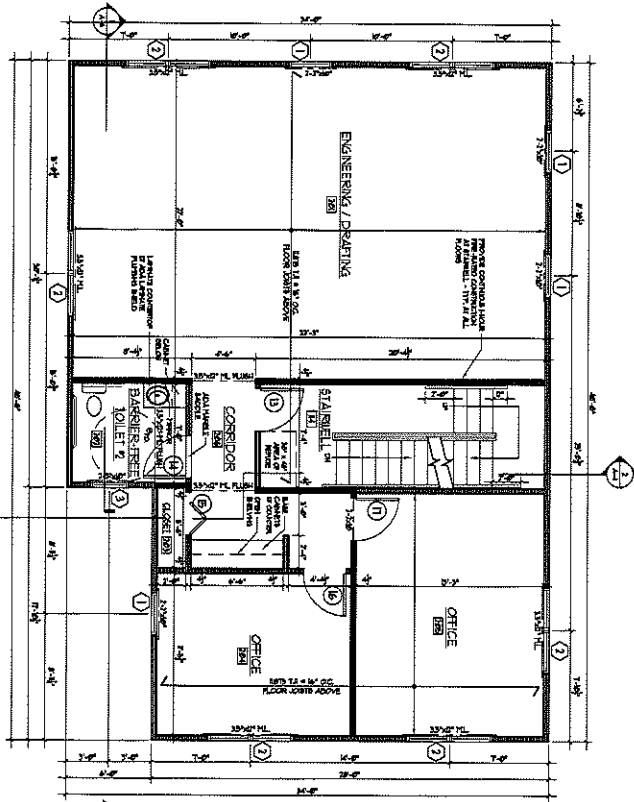
CREST
Engineering Associates Inc.
Professional Engineering Firm
1000 N. 10th Street, Suite 100
Atlantic City, NJ 08401
Tel: 856-841-1111
Fax: 856-841-1112
www.cresteng.com

MICHAEL P. INTILIA
Professional Engineer
No. 11102
1000 N. 10th Street, Suite 100
Atlantic City, NJ 08401
Tel: 856-841-1111
Fax: 856-841-1112
www.cresteng.com

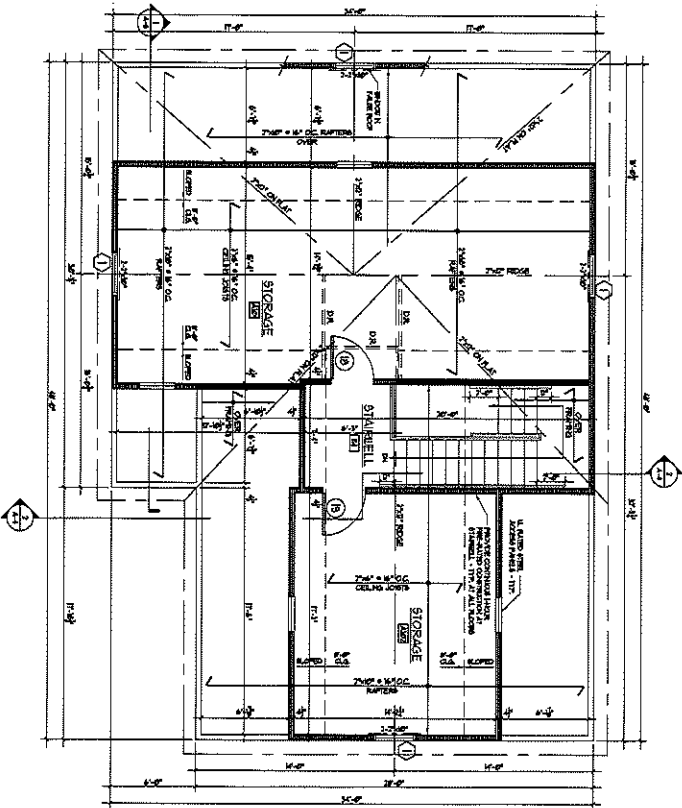
PRELIMINARY & FINAL PLAN
MAJOR SITE PLAN
LOT 47
BLOCK 669
(SEE SHEET 100, 101, 102, 103, 104, 105, 106, 107, 108, 109, 110, 111, 112, 113, 114, 115, 116, 117, 118, 119, 120)
FINAL CONSTRUCTION
GRADING & UTILITY
PLAN

2010 N.J. BOARD OF PROFESSIONAL ENGINEERS
No. 11102
MICHAEL P. INTILIA
Professional Engineer

1 SECOND FLOOR PLAN
1/8" = 1'-0"



2 ATTIC PLAN
1/8" = 1'-0"



DRAWING TITLE
NO. 20-24
SHEET NUMBER
A-2
3 OF 5

Perez + Radosti
Architects
Interior Design
P+R
547 route 130 north, oad winton, nj 08520 tel. 609.443.4031 fax 609.443.5277

ROBBINS PERAZ, A.A.
10 1200 CLEVELAND BLVD
STEPHEN L. RADOSTI, A.A.
10 1200 CLEVELAND BLVD
NEW JERSEY

NEW OFFICE BUILDING FOR:
CREST ENGINEERING
12 ROBBINS PARKWAY
TOMS RIVER, NEW JERSEY
LOT 47 BLOCK 669

DATE	2/12/12
DRAWN BY	JLL
CHECKED BY	ALB
PROJECT NO.	6696
SCALE	AS SHOWN
REVISIONS	