

## AUBURN PARK 15

1445 W Valley Hwy N  
Auburn, WA 98001

Excellent Location with  
Immediate Access to SR-167,  
HWY 18, & I-5

High Image Architectural Design

Professional Business Park

Ample parking

Located on a busy intersection

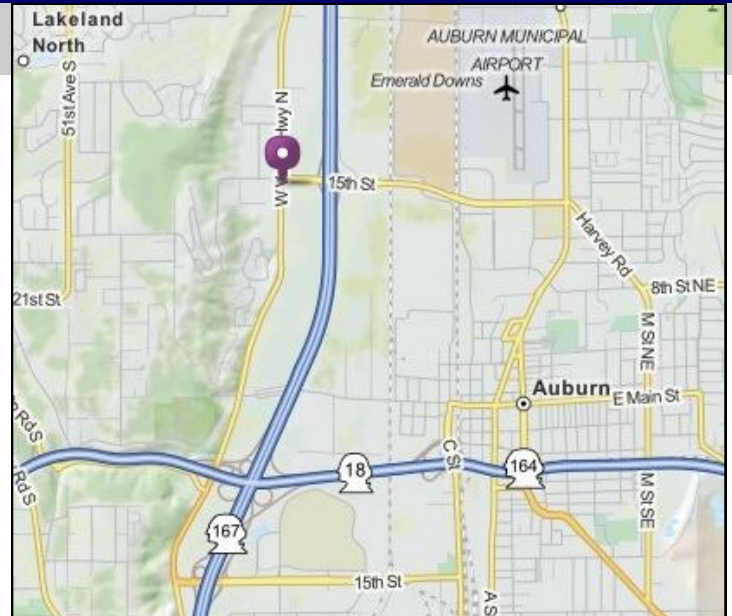


### SPACE INFORMATION

- Office: 1,067 sf office
- Rent: \$25.00/ SF Plus, NNN
- Available: NOW

#### Details:

Large private office, front reception area, air conditioned, restroom, outside light-up pylon signage. Great opportunity in high exposure at the busy intersection of 15th St NW & West Valley Hwy N.



**Marguerite Hwang**  
253.561.6939  
marguerite@turbak.com

**Ann Hwang**  
253.313.3990  
ann@turbak.com

**Turbak Commercial Real Estate**  
2711 West Valley Hwy N #200  
Auburn, WA 98001



1