

ONE OLYMPIA PARK

4801 OLYMPIA PARK PLAZA
LOUISVILLE, KY 40241

 EXECUTIVE SUMMARY

 PROPERTY INFO

 AERIAL MAP

 PROPERTY IMAGES

 FLOOR PLANS

 FOR MORE INFO





EXECUTIVE SUMMARY



A well-located Class A office property, the **One Olympia Park** office building is 100% leased with a diverse and professional tenant roster. Situated in some of the highest income demographic neighborhoods in Jefferson County, **One Olympia Park** is surrounded by abundant retail and service amenities.

ONE OLYMPIA PARK

4801 OLYMPIA PARK PLAZA
LOUISVILLE, KY 40241



EXECUTIVE SUMMARY



PROPERTY INFO



AERIAL MAP



PROPERTY IMAGES



FLOOR PLANS



FOR MORE INFO

ONE OLYMPIA PARK

PROPERTY INFO



4801 OLYMPIA PARK PLAZA
LOUISVILLE, KY 40241

Street Address: 4801 Olympia Park Plaza
Louisville, Kentucky 40241

Total Site Area: 6.93 Acres

Gross Building Size: 125,000 sf

Parking: 477 Surface Lot Spaces

Year Completed: 2001

Roof: Single-ply thermoplastic roof system over rigid insulation and metal decking on steel bar joists. New roof in 2017.

Exterior: Architectural pre-cast panels with multiple finish textures and high performance thermopane glazing in aluminum frames.

Elevators: Two 3,500-pound capacity hydraulic passenger elevators and one 3,500-pound capacity freight elevator. Dedicated service and delivery freight elevator.



EXECUTIVE SUMMARY



PROPERTY INFO



AERIAL MAP



PROPERTY IMAGES



FLOOR PLANS



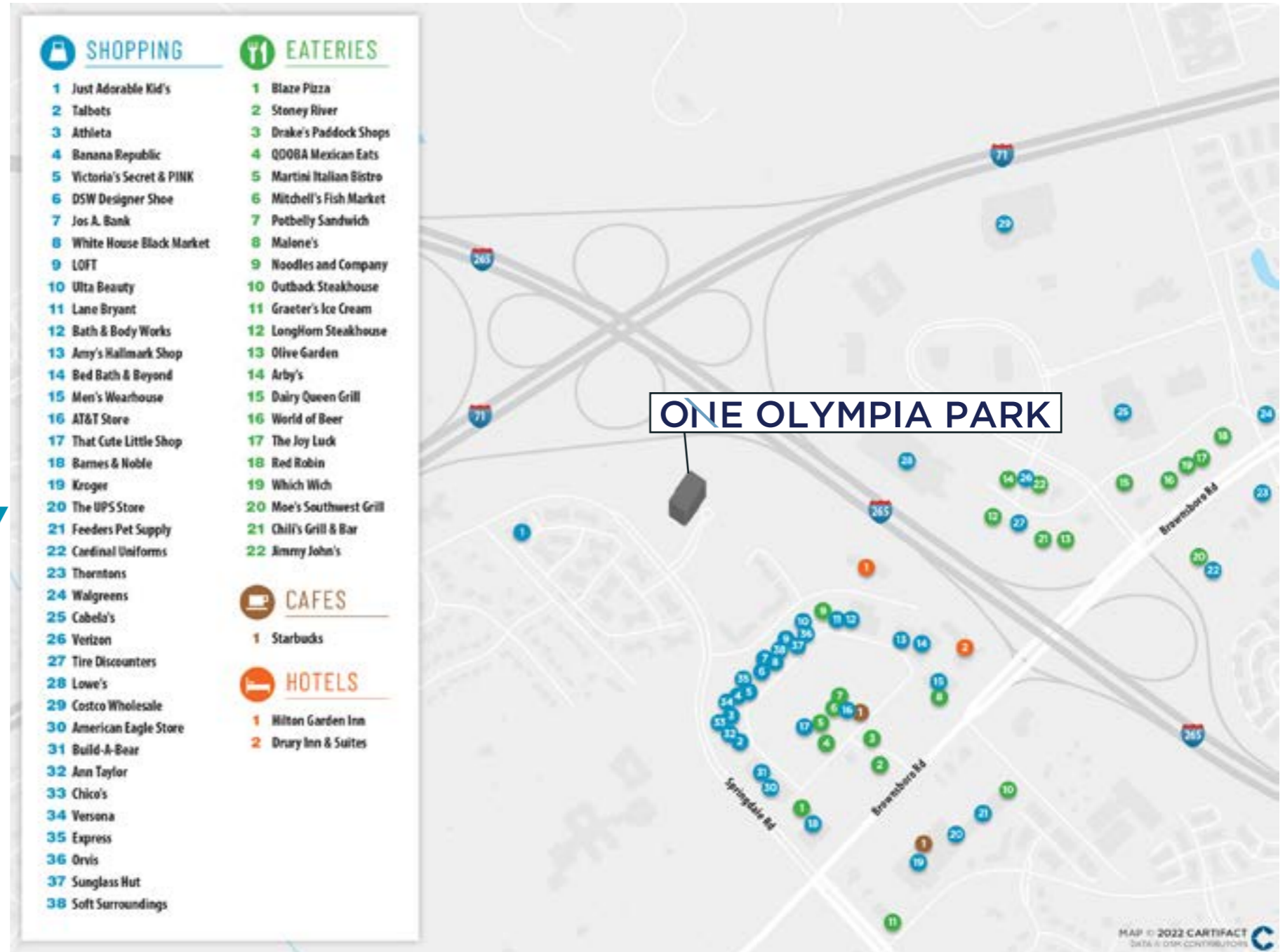
FOR MORE INFO



AERIAL MAP

ONE OLYMPIA PARK

4801 OLYMPIA PARK PLAZA
LOUISVILLE, KY 40241



EXECUTIVE SUMMARY



PROPERTY INFO



AERIAL MAP



PROPERTY IMAGES



FLOOR PLANS



FOR MORE INFO



PROPERTY IMAGES

ONE OLYMPIA PARK

4801 OLYMPIA PARK PLAZA
LOUISVILLE, KY 40241



EXECUTIVE SUMMARY



PROPERTY INFO



AERIAL MAP



PROPERTY IMAGES



FLOOR PLANS



FOR MORE INFO

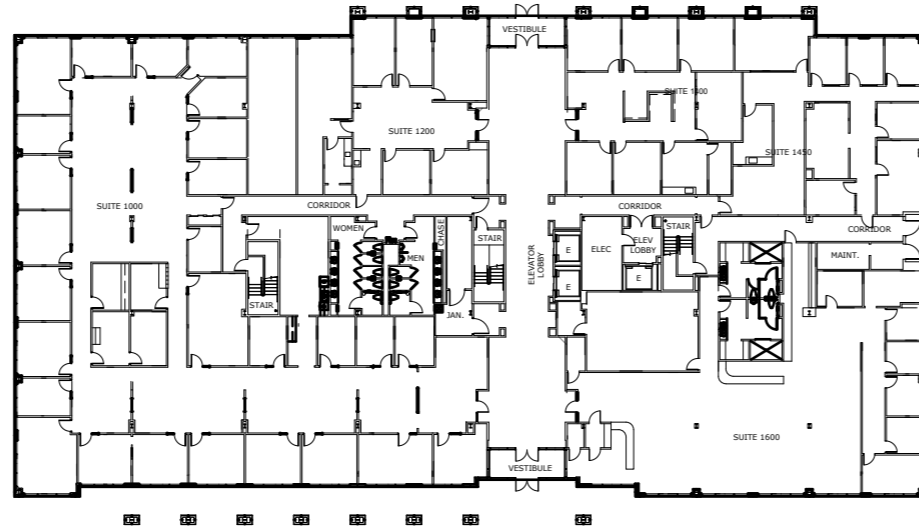
ONE OLYMPIA PARK

FLOOR PLAN

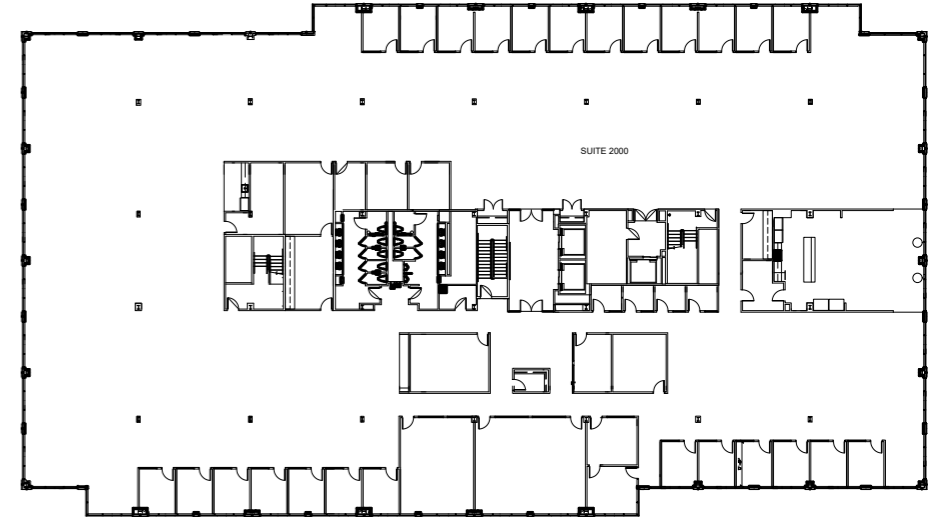


4801 OLYMPIA PARK PLAZA
LOUISVILLE, KY 40241

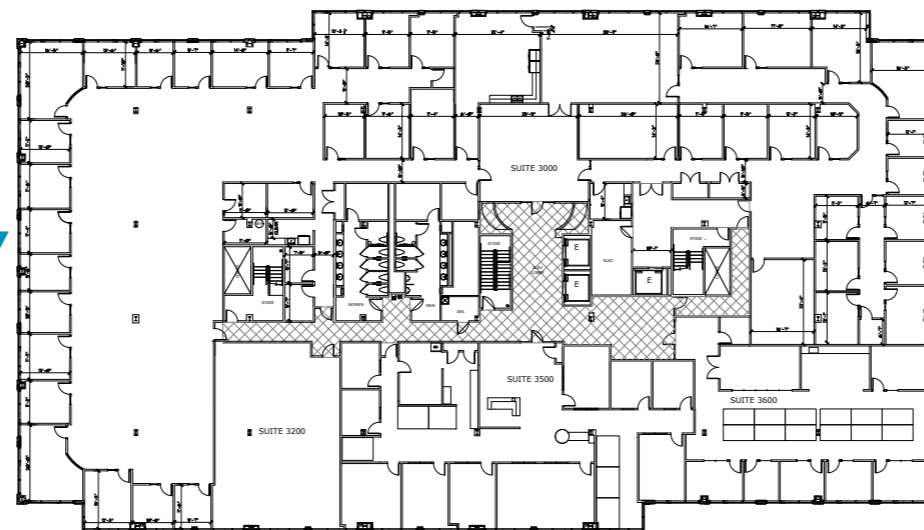
FIRST FLOOR



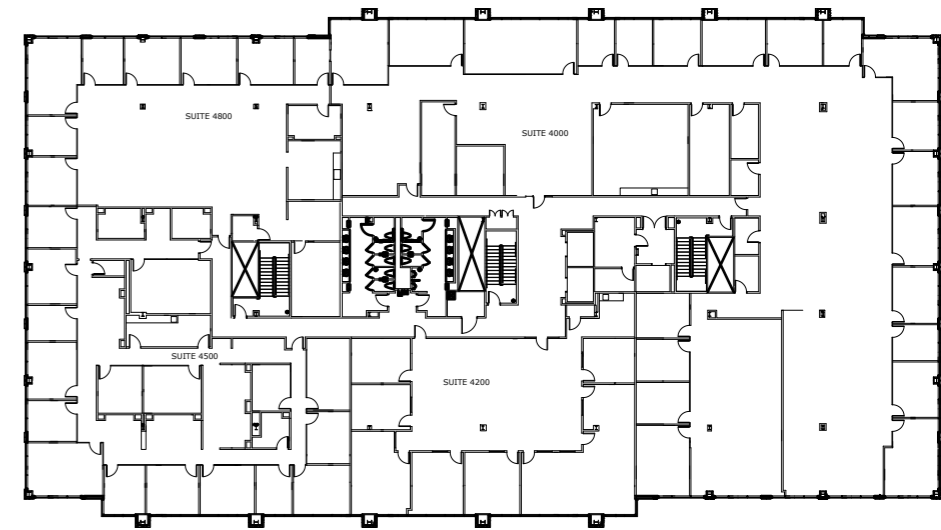
SECOND FLOOR



THIRD FLOOR



FOURTH FLOOR



EXECUTIVE SUMMARY



PROPERTY INFO



AERIAL MAP



PROPERTY IMAGES



FLOOR PLANS



FOR MORE INFO



FOR MORE INFORMATION

ONE OLYMPIA PARK

4801 OLYMPIA PARK PLAZA
LOUISVILLE, KY 40241



EXECUTIVE SUMMARY



PROPERTY INFO



AERIAL MAP



PROPERTY IMAGES



FLOOR PLANS



FOR MORE INFO



For more information, please contact:

CRAIG COLLINS
Senior Director
502 719 3221
ccollins@commercialkentucky.com

AUSTIN G. ENGLISH, MBA
Associate
502 719 3258
aenglish@commercialkentucky.com

333 E. Main Street, Suite 510
Louisville, KY 40202
phone: +502 589 5150
www.commercialkentucky.com