

# CENTURY TOWERS HIGHLY IMPROVED SUBLEASE

**2049**  
Century Park East  
25th Floor - Los Angeles, CA



[CLICK FOR  
VIDEO TOUR](#)



## AVAILABLE

± 2,308 SF

## INITIAL RATE

Negotiable

## TERM

± Three (3) Years



- Seven (7) Offices
- One (1) Conference Room
- Workstation for Four (4) People
- Move - in Ready
- Breathtaking Unobstructed Views
- Ideal for Professionals
- \$135/SF Invested in Space
- Beautiful Furniture Available
- Pictures are an Approximate Representation of the Space's Appearance

**CRAIG MILLER**

[cmiller@stone-miller.com](mailto:cmiller@stone-miller.com)

(310) 202-9008 x 101

DRE #01006713



**JEFF LIPSON**

[jlipson@stone-miller.com](mailto:jlipson@stone-miller.com)

(310) 202-9008 x 113

DRE #01196852

The information furnished regarding rent roll, income, expenses, current and pro forma rents, unit measurements, land measurements and similar data has been submitted to us by others and thus we cannot make any representation as to its accuracy. The information furnished regarding property for sale, rental or financing is submitted subject to errors, omissions, change of price or other conditions, prior to sale, lease or withdrawal without notice.





[CLICK FOR  
VIDEO TOUR](#)

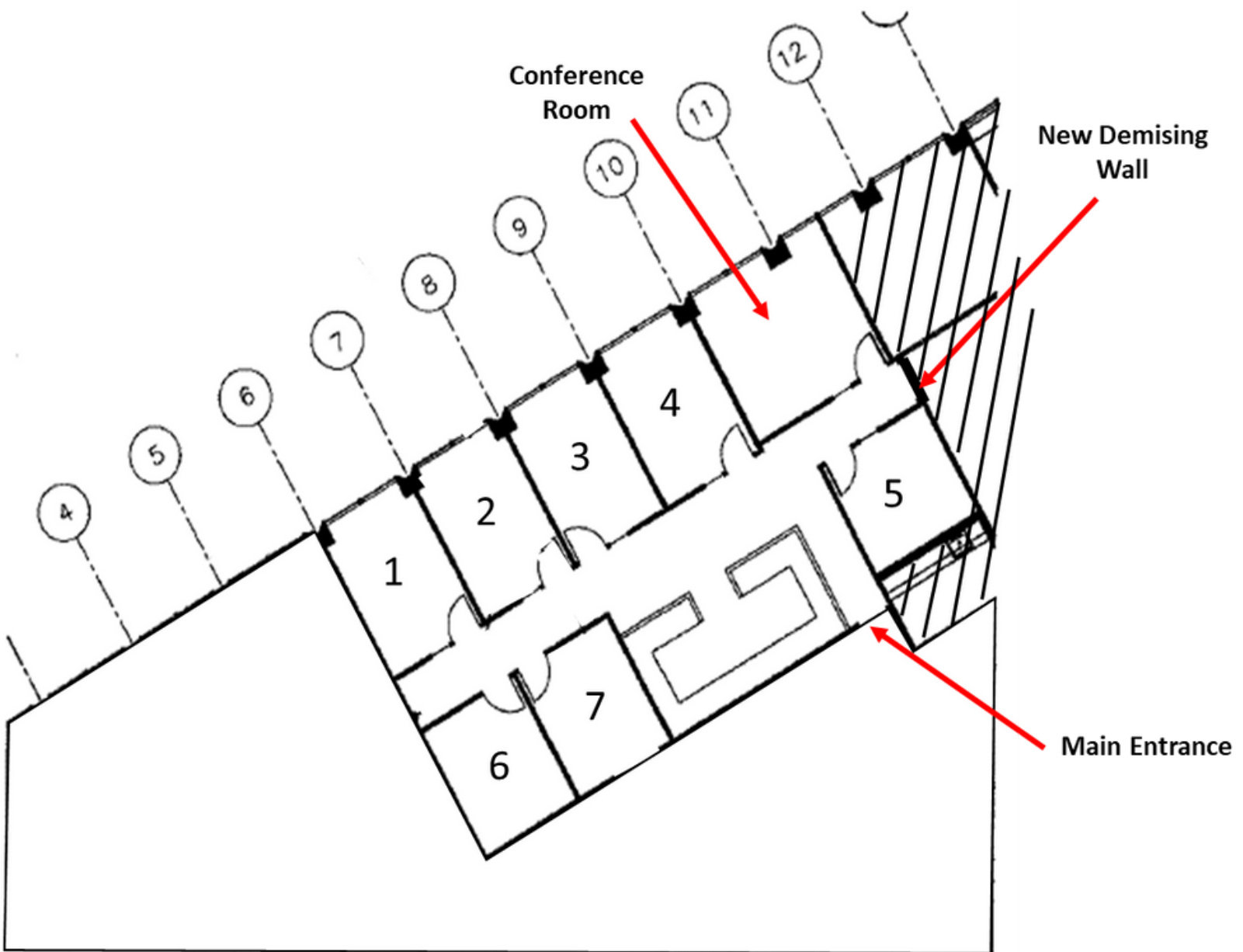


**CRAIG MILLER**  
[cmiller@stone-miller.com](mailto:cmiller@stone-miller.com)  
(310) 202-9008 x 101  
DRE #01006713



**JEFF LIPSON**  
[jlipson@stone-miller.com](mailto:jlipson@stone-miller.com)  
(310) 202-9008 x 113  
DRE #01196852





[CLICK FOR  
VIDEO TOUR](#)



**CRAIG MILLER**

[cmiller@stone-miller.com](mailto:cmiller@stone-miller.com)

(310) 202-9008 x 101

DRE #01006713



**JEFF LIPSON**

[jlipson@stone-miller.com](mailto:jlipson@stone-miller.com)

(310) 202-9008 x 113

DRE #01196852