

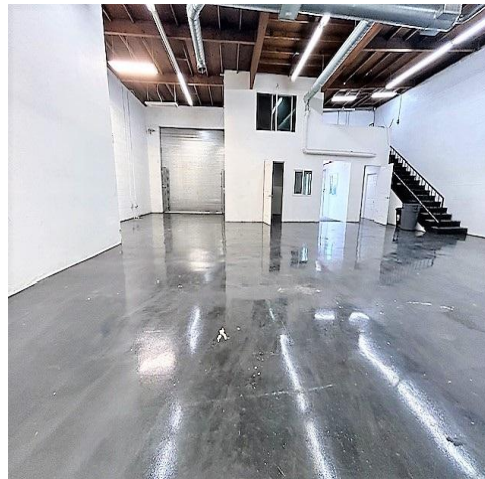
# 9th & San Pedro Creative Use Campus Flower District



Creative Use Campus in the heart of Flower District / Fashion District at the corner of 9th Street and San Pedro Street with ample onsite parking.

We offer a variety of spaces in different sizes for a wide range of uses including

- Retail / Showroom
- Creative Spaces
- Warehouse
- Single Offices (Starting \$425)
- Photo Studio
- Recording Studios (Starting \$1,000 per month)
- [For A Virtual Tour Click Here](#)



**Kayhan Shakib**  
[kayhan@shakib.com](mailto:kayhan@shakib.com)  
(310)820-0700

# 932 S. San Pedro Single Offices



## 932 S. San Pedro Street

Size: 1,500 sq. ft.

Rental Rate: \$4.000

- Exposed Ceiling
- Concrete Floors
- Great for Flower Shop



# 711 E. 9th Place, Unit B



## 711 E. 9th Place, Unit B

Size: 2,000 sq. ft.

Rental Rate: \$4,500

- Epoxy Floor
- HVAC
- Roll Up Door
- Second Floor Office/ Storage
- [For a Virtual Tour Click Here](#)



# 711 E. 9th Place, Unit C

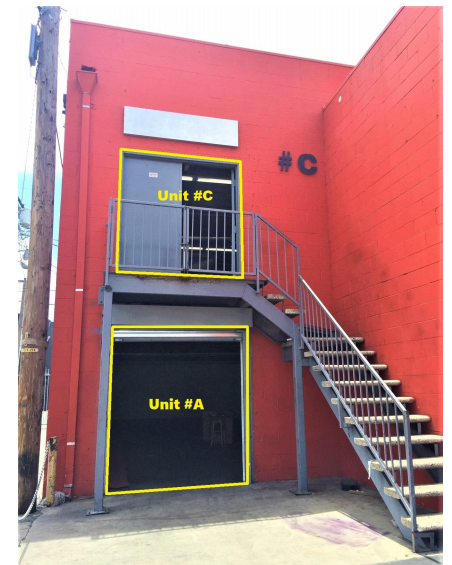


## 711 E. 9th Place, Unit C

Size: 3,000 sq. ft.

Rental Rate: \$4,800

- Second Floor Creative Space
- Currently set up as Photo Studio
- 400 Amp / 3- Phase Electrical Panel
- HVAC
- [For a Virtual Tour Click Here](#)



# 9th & San Pedro Single Offices



## 926 S. San Pedro Street, Single Offices

Size: Approximately 150 sq. ft.  
Rental Rate: Starting at \$425

- Private Single Offices
- Furnished and Unfurnished Options Available
- [For A Virtual Tour Click Here](#)



# 920 S. San Pedro Street



## 920 S. San Pedro Street

Size: 4,000 sq. ft.

Rental Rate:

- 11 Soundproof Recording Studios
- Rented Individually starting at \$1,000
- Or You Can Lease the entire Space
- HVAC
- Short Term Leases Available
- [For a Virtual Tour Click Here](#)

