

For Sublease

Office Suite

600 N. Walker, Suite 102, Oklahoma City, OK 73102



Newmark Grubb
Levy Strange Beffort

Vicki Knotts
Ben Knotts

o. 405-879-4761
o. 405-879-4766

f. 405-286-6109
f. 405-463-3232

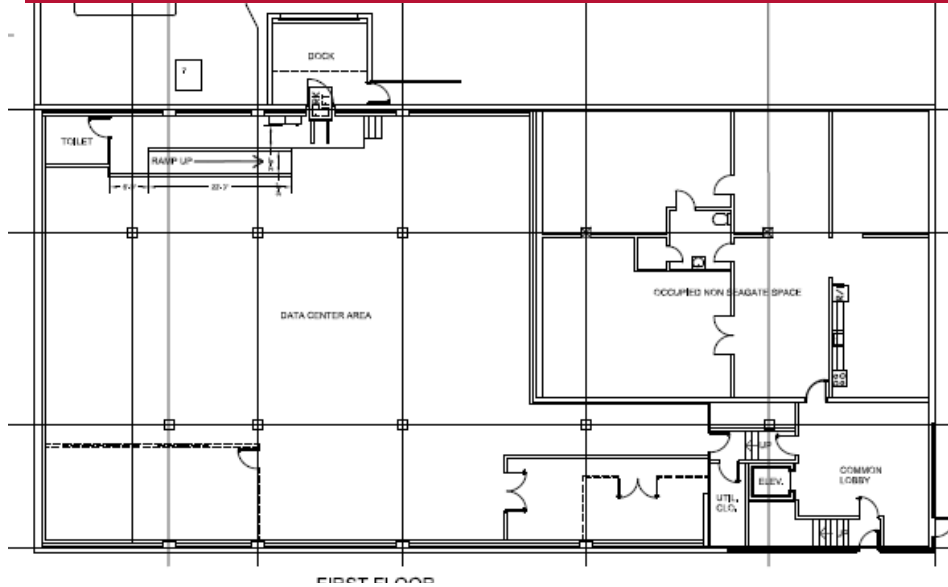
vknotts@newmarklsb.com
bknotts@newmarklsb.com

MORE INFORMATION
AVAILABLE ONLINE:
www.newmarklsb.com

For Sublease

Office Suite

600 N. Walker, Suite 102, Oklahoma City, OK 73102



Snapshot

Available SF	6,417 RSF
Rental Rate	\$15.00/SF
Lease Type	Modified Gross
Lease Expiration	November 30, 2020

Property Overview

Located in the heart of Midtown with easy access to I-235. Raised floors, racks, and UPS system in place. Private entrance and overhead door for off loading.

Property Highlights

- Generator For Entire Building
- Parking On Site At No Charge
- Building Hours: 7:30 am - 5:15 pm
- Veolia Water
- Card Key Access
- Security Cameras With 30 Day Backup
- UPS Powered
- Midtown Address

Newmark Grubb

Levy Strange Beffort

www.newmarklsb.com

OKLAHOMA CITY

204 N. Robinson, Suite 700, Oklahoma City, OK 73102

405-840-1500

TULSA

2021 S. Lewis, Suite 410, Tulsa, OK 74104

918-481-3200

The information contained herein was obtained from sources believed reliable; however, Newmark Grubb Levy Strange Beffort makes no guarantees, warranties or representations as to the completeness or accuracy thereof. The presentation of this property is submitted subject to errors, omissions, change of price or conditions prior to sale or lease, or withdrawal without notice. Independently Owned and Operated.