

168-14 Jamaica Avenue, Jamaica, NY

**BEST PRICE YOU WILL FIND
IN JAMAICA!**

Property Features

- ❖ 7,000 sq. ft. 2nd floor space
- ❖ 1,200 sq. ft. ground floor retail space
- ❖ Excellent location
- ❖ Large windows with natural light
- ❖ Prominent signage available
- ❖ Walk-up
- ❖ Possible lift installation
- ❖ Long-term lease

Location

Easy access Van Wyck Expressway
and Grand Central Parkway
Steps from 800 unit residential
development coming soon

Transportation

Short walk to Q6, Q8, Q17, Q24,
Q30, Q31, Q41, Q54, Q56, Q110
with connection to the E, J & Z
subway lines

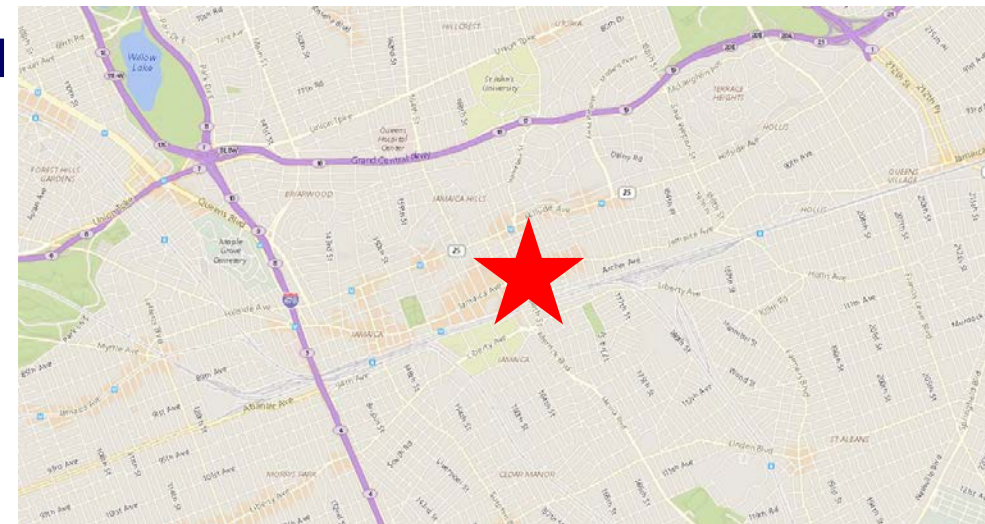
CALL FOR PRICING



**8,200 Sq. Ft.
Total Space
For Lease**

**Can Be Combined
or Leased
Separately at
Amazing Price!**

**~ Ideal for Retail,
General Office, Creative
Use, Art Gallery ~**



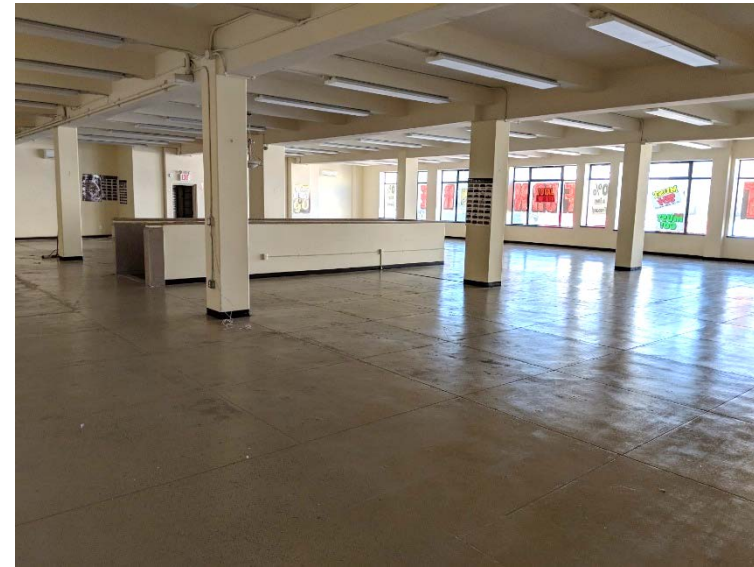
For Further Information and Inspection, Please Contact Exclusive Agent:

Marc Durst • Assoc. Broker • (718) 732-0626 • mdurst@s-z.com

Kaufman Astoria Studios 35-11 35th Avenue, Long Island City, NY 11106 • (718) 392-5959 • Fax (718) 937-6546

www.s-z.com

168-14 Jamaica Avenue, Jamaica, NY



For Further Information and Inspection, Please Contact Exclusive Agent:

Melissa Grasso • Salesperson • (718) 371-0127 • mgrasso@s-z.com Marc Durst • Assoc. Broker • (718) 732-0626 • mdurst@s-z.com

Kaufman Astoria Studios 35-11 35th Avenue, Long Island City, NY 11106 • (718) 392-5959 • Fax (718) 937-6546

www.s-z.com