

15200 METCALF

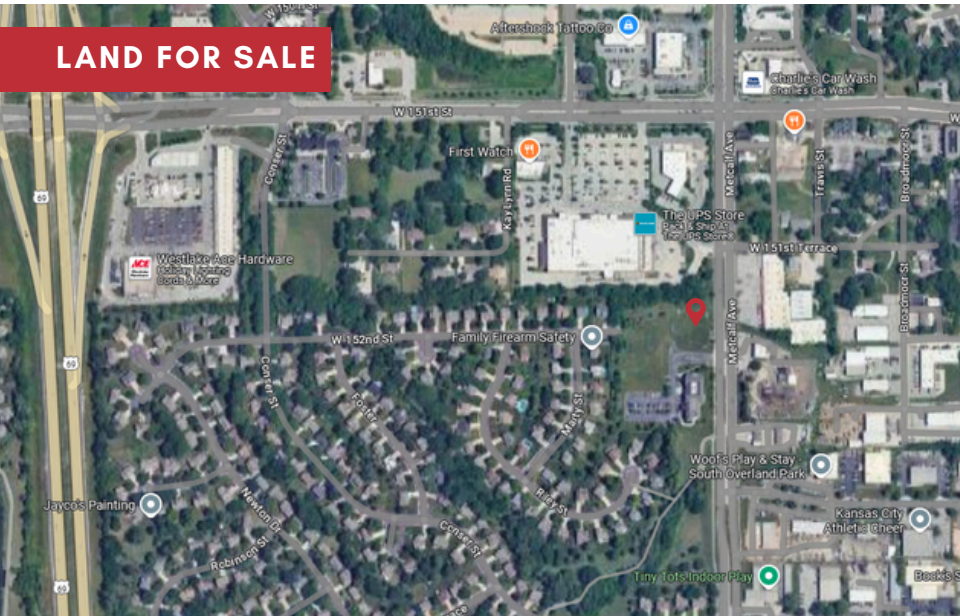
OVERLAND PARK, KS 66223



REECE
COMMERCIAL REAL ESTATE

a Berkshire Hathaway Affiliate

LAND FOR SALE



JIM THOME

913.548.8700

JTHOME@REECECOMMERCIAL.COM



ALEX THOME

913.709.3849

ATHOME@REECENICHOLS.COM

PROPERTY DETAILS

\$18 PSF

- CP-O PAD SITE - LOT 3
- .96 ACRES - 42,003 SQFT
- METCALF FRONTAGE - VERITAS OFFICE PARK
- GREAT LOCATION FOR MEDICAL USE
- CAN BUILD UP TO 15,349 SQFT, 2 STORY BUILDING WITH 38 PARKING SPOTS

The information above has been obtained from sources believed reliable. While we do not doubt its accuracy we have not verified it and make no guarantee, warranty or representation about it. It is your responsibility to independently confirm its accuracy and completeness. Any projections, opinions, assumptions, or estimates used are for example only and do not represent the current or future performance of the property. You and your advisors should conduct a careful, independent investigation of the property to determine to your satisfaction the suitability of the property for your needs. © 2020

15200 METCALF

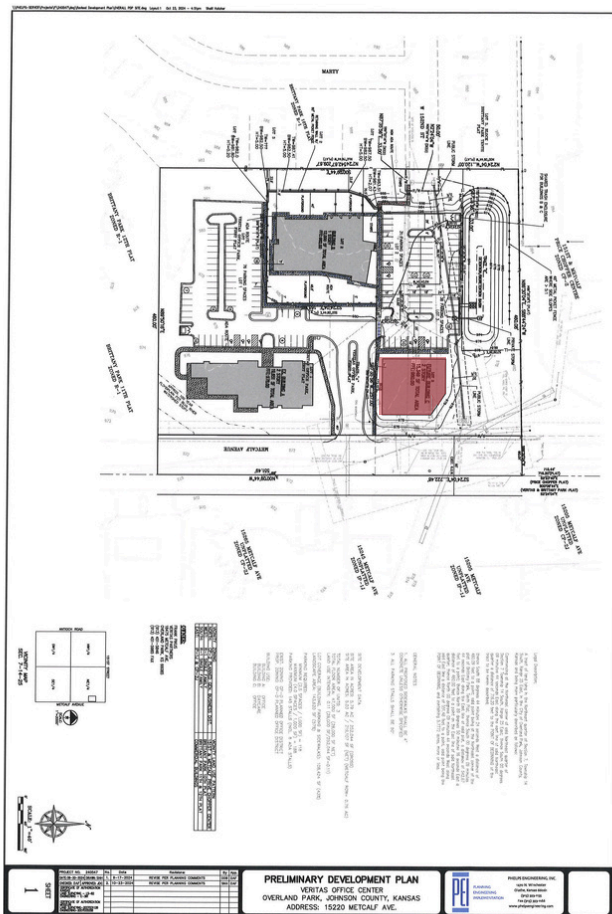
OVERLAND PARK, KS 66223



REECE

COMMERCIAL REAL ESTATE

a Berkshire Hathaway Affiliate



JIM THOME

913.548.8700
JTHOME@REECECOMMERCIAL.COM



ALEX THOME

913.709.3849
ATHOME@REECENICHOLS.COM

The information above has been obtained from sources believed reliable. While we do not doubt its accuracy we have not verified it and make no guarantee, warranty or representation about it. It is your responsibility to independently confirm its accuracy and completeness. Any projections, opinions, assumptions, or estimates used are for example only and do not represent the current or future performance of the property. You and your advisors should conduct a careful, independent investigation of the property to determine to your satisfaction the suitability of the property for your needs. © 2020

