



Recently renovated to the highest standards

Building SF	9,000
Lot size SF	6,828
Parcel ID Number	12-21-324-190-0000
Zoning	C-4
Drive Ins	2
Parking	5 Car
Real Estate Taxes	\$32,628
Sale Price	\$699,000
Lease Rate (PSF)	\$7.35 Net



2-minute drive to Mannheim
commuter rail station



12-minute drive to
O'Hare International Airport

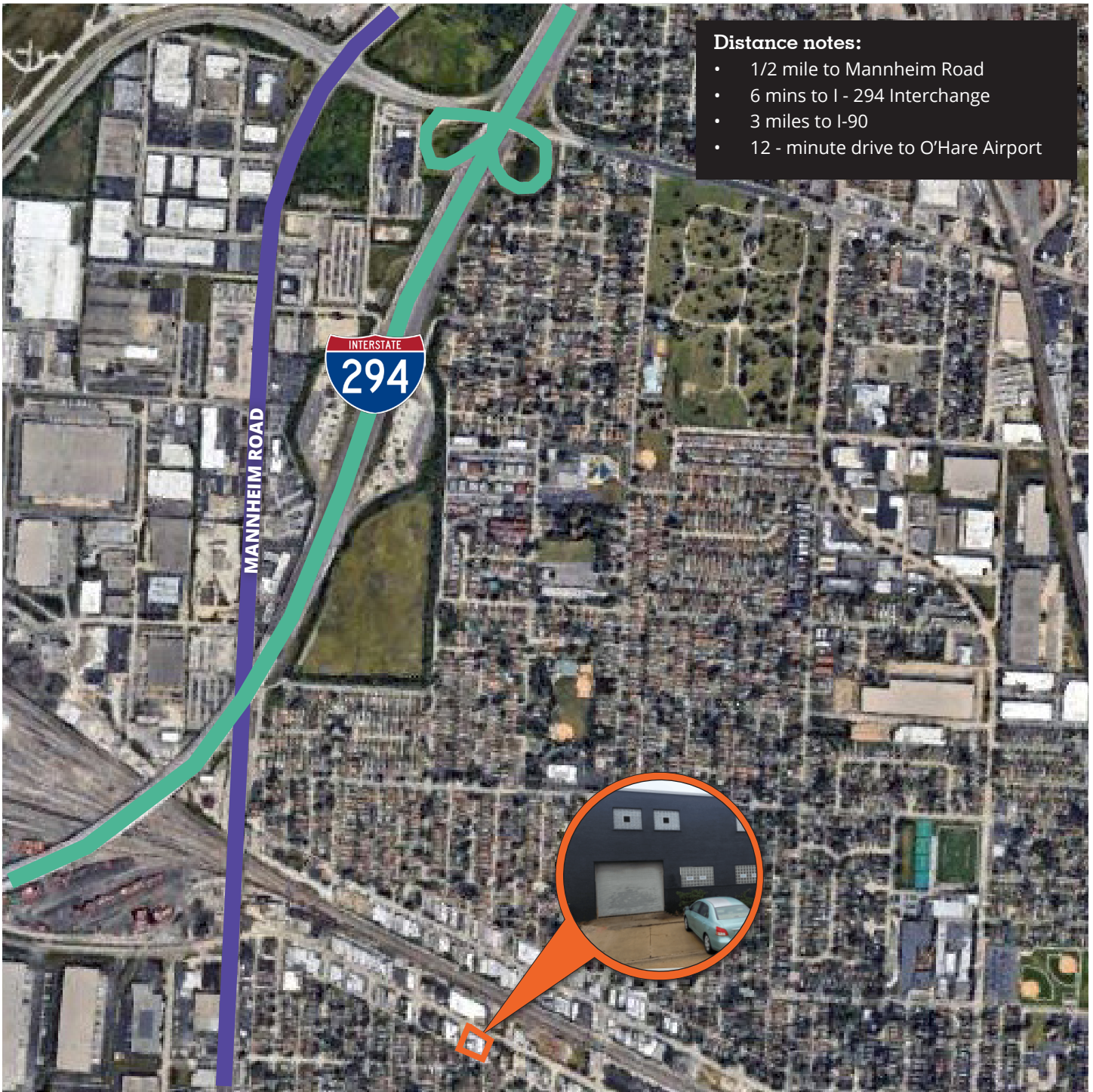


Well-located near highway system

For further information

Steven A Kohn, SIOR
Principal
steven.kohn@avisonyoung.com
D +1 847 849 1912
M +1 847 341 6048

[avisonyoung.com](https://www.avisonyoung.com)



For further information

Steven A Kohn, SIOR
Principal
steven.kohn@avisonyoung.com
D +1 847 849 1912
M +1 847 341 6048



For Sale or Lease

10111 Franklin Ave, Franklin Park, IL 60131



**For further
information**

Steven A Kohn, SIOR
Principal
steven.kohn@avisonyoung.com
D +1 847 849 1912
M +1 847 341 6048

**AVISON
YOUNG**