



CENTRAL LOACTION - 66TH AND WASHINGTON

651 E 66TH AVE
DENVER, CO 80229

Property Summary

- Hard to Find Central Denver Location
- Easy Access to I-25 & I-76
- Functional Floor Plan
- Signage on Building
- Additional ±1,565 SF Mezzanine space (not included in overall SF)

Property Zoning | I-1

Click [HERE](#) for zoning information

Property Features

Lease Rate	\$9.75/SF NNN
NNN Expenses	\$4.21 (2025)
Unit Size	8,160 SF
Building Size	19,240 SF
Office SF	±1,565 SF (19%)
Loading	One (1) Drive in: 10 x 14 One (1) Dock High: 8 x 12
Y.O.C.	1969
Clear Height	18ft - 20ft
Parking	±8 Spots

For more information:



Brett MacDougall

Vice President

303.512.2736

bmacdougall@uniqueprop.com

Michael DeSantis

Vice President

303.512.1194

mdesantis@uniqueprop.com

Carson Lang

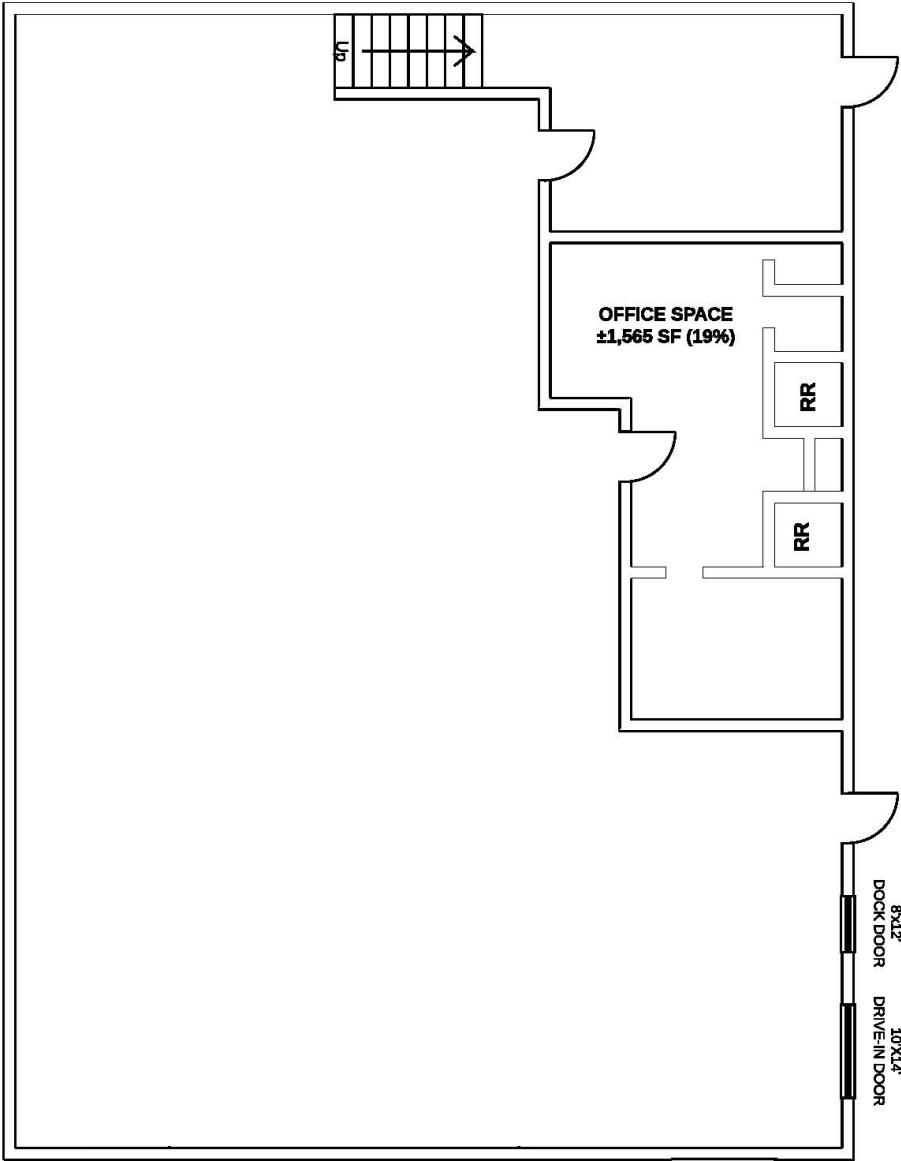
Broker Associate

720.881.6344

clang@uniqueprop.com

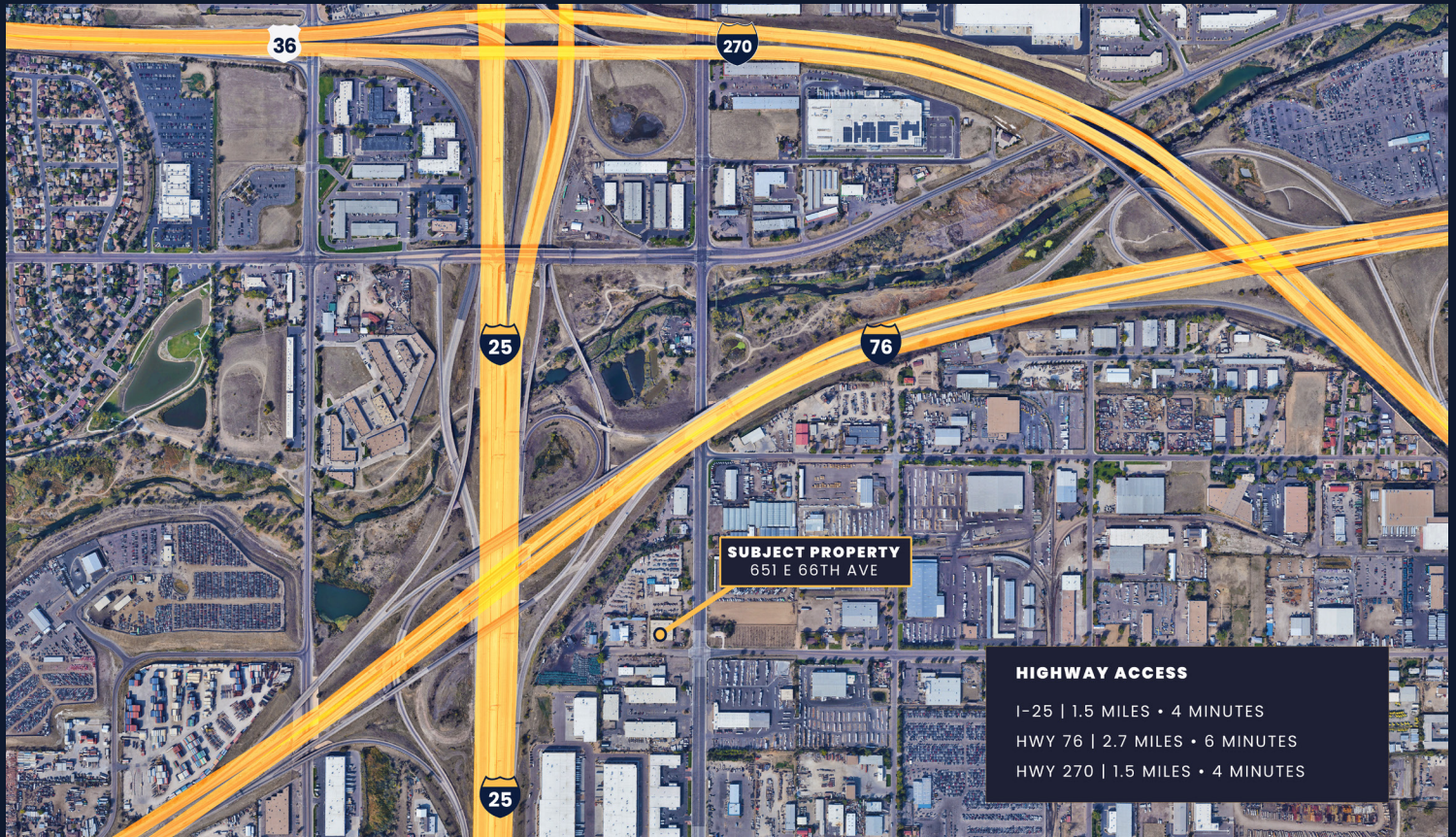
WASHINGTON ST

E 66TH AVE



651 E 66TH AVE

DENVER, CO 80229



For more information:



Brett MacDougall

Vice President

303.512.2736

bmacdougall@uniqueprop.com

Michael DeSantis

Vice President

303.512.1194

mdesantis@uniqueprop.com

Carson Lang

Broker Associate

720.881.6344

clang@uniqueprop.com

The information contained herein was obtained from sources believed reliable; however, Unique Properties makes no guarantees, warranties or representations as to the completeness or accuracy thereof. The presentation on this property is submitted subject to errors, omission, changes of price, or conditions, prior to sale or lease, or withdrawal without notice.