



**FOR
LEASE**

[CLICK HERE FOR VIRTUAL TOUR](#)



PAC RIM BUILDING

Office Space Available: 8,500 - 17,000 RSF

4275 NW Pacific Rim Boulevard, Camas, WA 98607

Secured second story office available featuring a break room with kitchenette, elevator, dedicated restrooms, on site parking with 4/1,000 ratio. This space has an open floor plan lined with 36 private offices and three conference rooms.

MARK CHILDS, SIOR

503.542.4350

markc@capacitycommercial.com

TAMARA J. FULLER, CCIM

360.946.4832

tamara.fuller@capacitycommercial.com

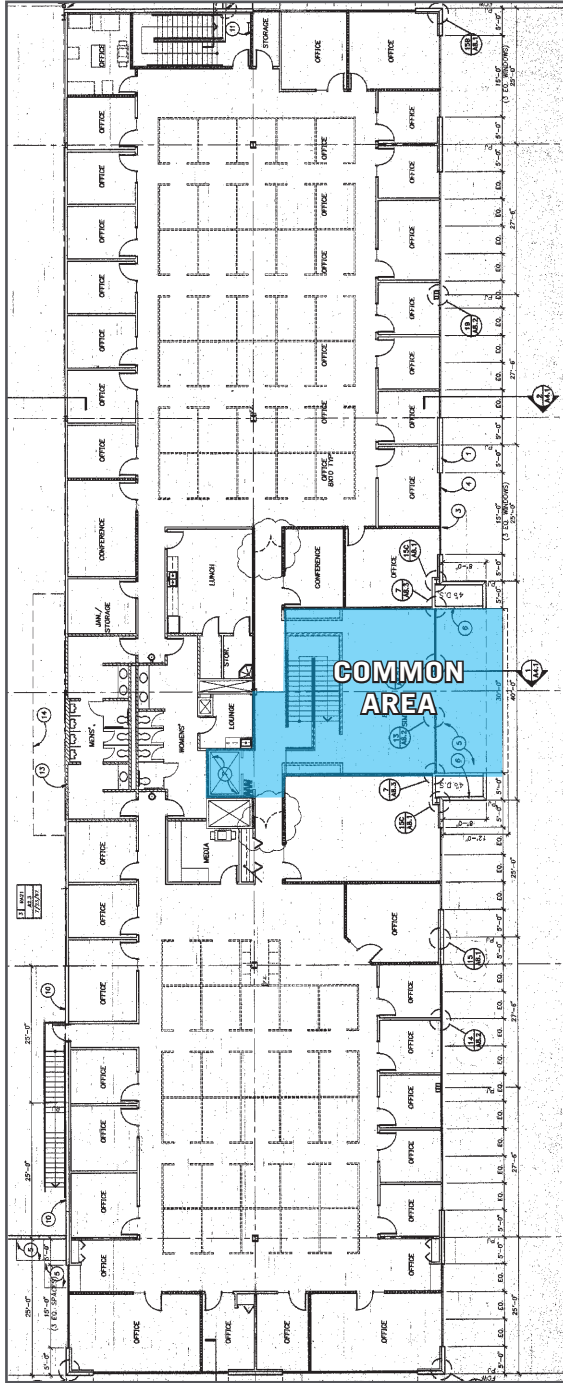
ERIC ANDERSON

360.946.4831

eric@capacitycommercial.com



FLOOR PLAN



PROPERTY DETAILS & AMENITIES

Secured 2nd Floor	\$17/RSF, Modified Gross
Available	8,500 - 17,000 SF
Parking	4/1,000 SF Parking Ratio
Total SF	221,800 SF
Built	1998
Building Class	B
Features	36 Private Offices, 3 Conf Rooms Dedicated Restrooms, Elevator Break Room with Kitchenette
Virtual Tour	Click to see Second Floor Office

MARK CHILDS, SIOR

503.542.4350

mark@capacitycommercial.com

TAMARA J. FULLER, CCIM

360.946.4832

tamara.fuller@capacitycommercial.com

ERIC ANDERSON

360.946.4831

eric@capacitycommercial.com



AREA AMENITIES



PROPERTY DETAILS & AMENITIES

Secured 2nd Floor	\$17/RSF, Modified Gross
Available	8,500 - 17,000 SF
Parking	4/1,000 SF Parking Ratio
Total SF	221,800 SF
Built	1998
Building Class	B
Features	36 Private Offices, 3 Conf Rooms Dedicated Restrooms, Elevator Break Room with Kitchenette
Virtual Tour	Click to see Second Floor Office

MARK CHILDS, SIOR

503.542.4350

markc@capacitycommercial.com

TAMARA J. FULLER, CCIM

360.946.4832

tamara.fuller@capacitycommercial.com

ERIC ANDERSON

360.946.4831

eric@capacitycommercial.com



IMAGE
LIBRARY

