

63-09

FLUSHING AVENUE

CORNER OF GRAND & FLUSHING AVENUES
MASPETH | QUEENS



SIZE: *Ground Floor - 1,930 SF*

FRONTAGE: *80'*

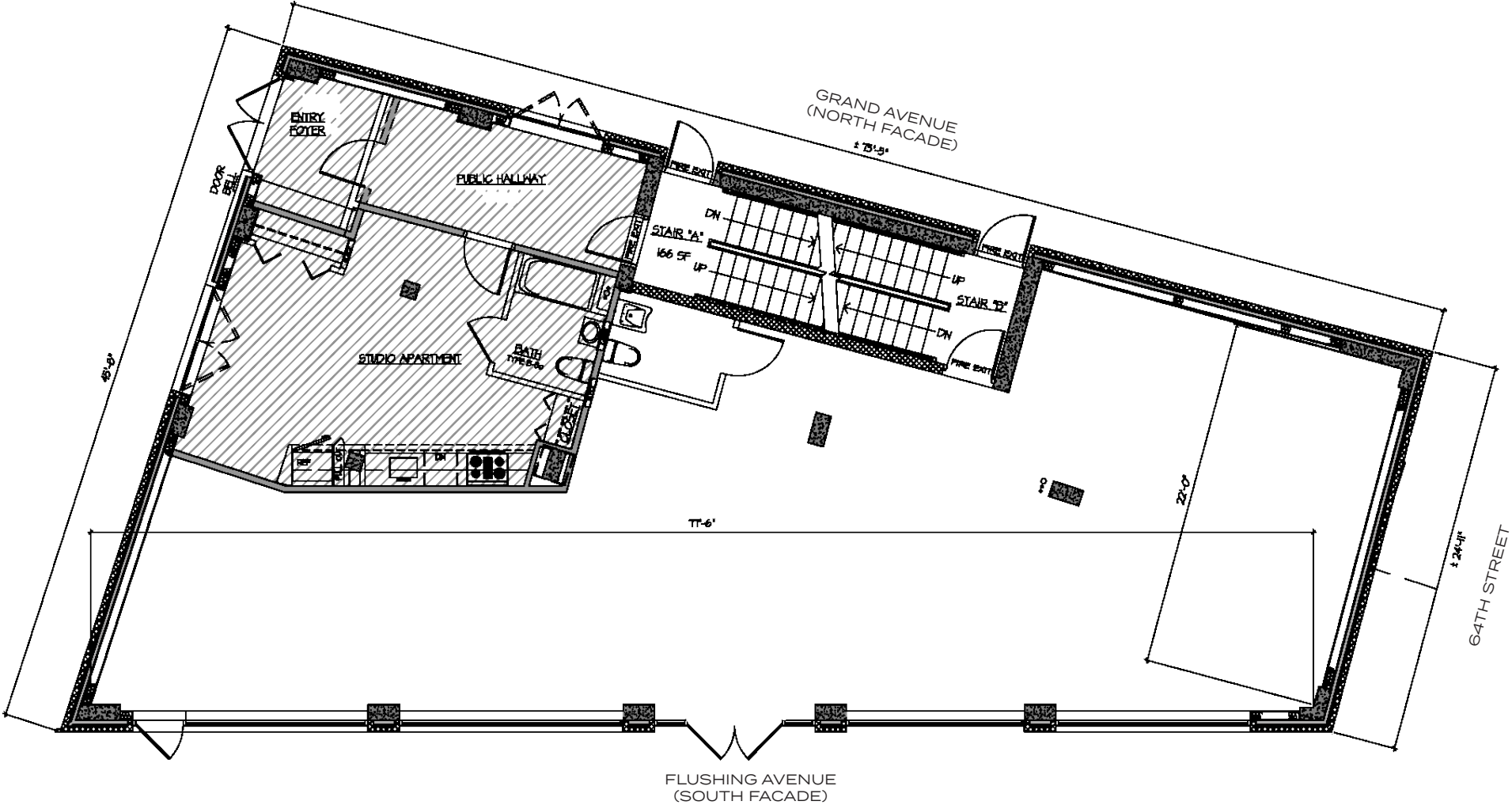
POSSESSION: *6/1/2026*

TRANSPORTATION: *B57, Q58, Q59, *

HIGHLIGHTS:

- Former Valley National Bank location
- 1.2M households in a 5 mile radius
- Less than .25 miles from the LIE (I-495) and .5 miles from the BQE
- High foot traffic area in dense residential neighborhood
- Neighboring tenants include:
*Benjamin Moore Paint, Laurel Blinds & Shade, Maspeth Sign,
Ocean Prime, Moon Palace Kitchen*

FLOOR PLANS:
GROUND FLOOR - 1,500 SF



63-09

FLUSHING AVENUE
CORNER OF GRAND & FLUSHING AVENUES
MASPETH | QUEENS

FOR MORE INFORMATION,
PLEASE CONTACT:

NATHAN ABALLI

917.915.8763 | NAballi@ksrny.com

GEORGE LISA

917.480.1174 | GLisa@ksrny.com

