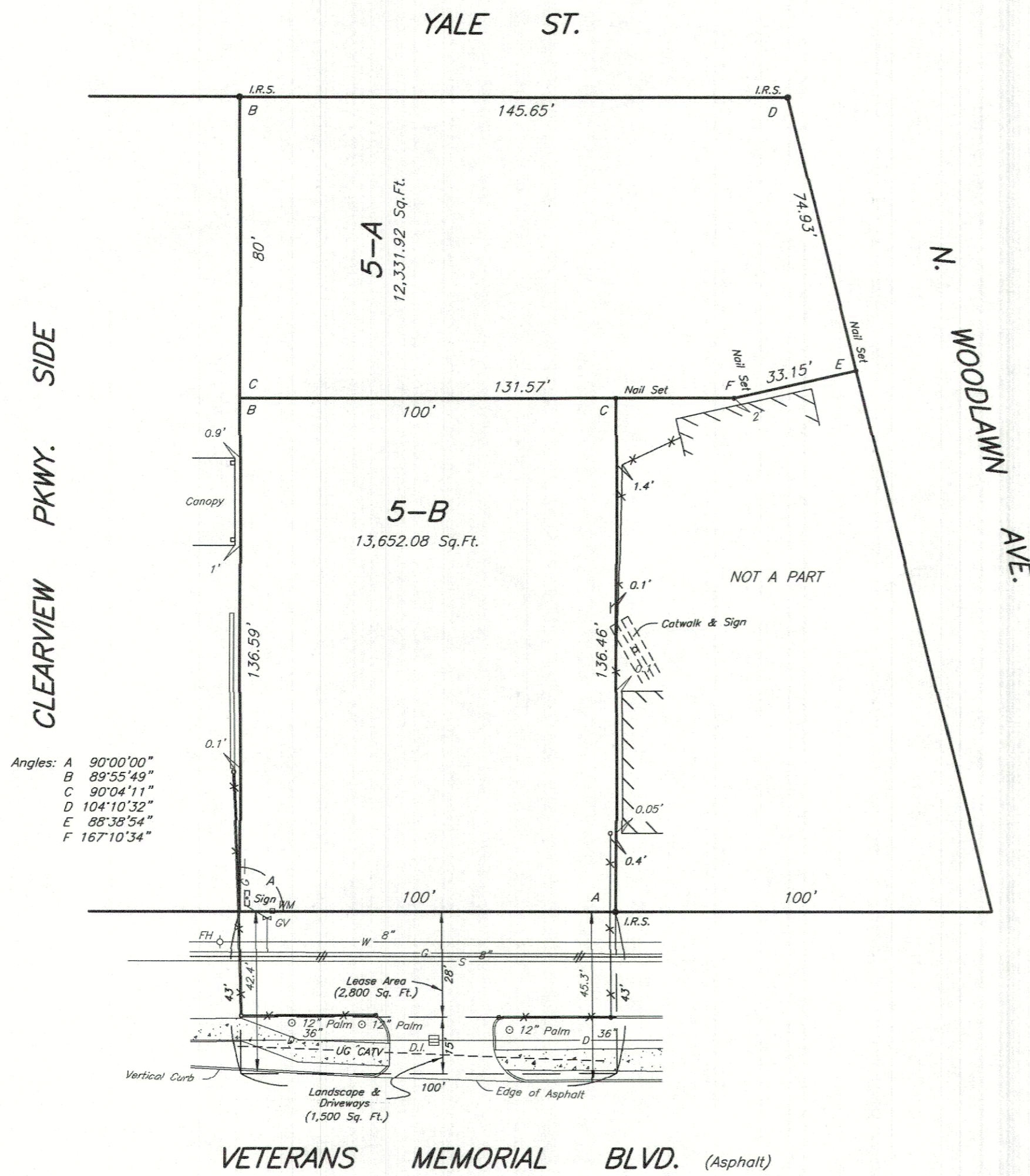


**SQ. NO. 3, PONTCHARTRAIN GARDENS, SEC. "C"**  
**JEFFERSON PARISH, LA**  
 (Lots 5-A and 5-B)



Angles: A 90°00'00"  
 B 89°55'49"  
 C 90°04'11"  
 D 104°10'32"  
 E 88°38'54"  
 F 167°10'34"

**LEGEND**

- I.R.S. Iron Rod Set
- I.R.F. Iron Rod Fd. (Found)
- I.P.S. Iron Pipe Set
- I.P.F. Iron Pipe Fd. (Found)
- Nail Set
- Nail Fd. (Found)
- ▲ PK Nail Set
- ▲ PK Nail Fd. (Found)
- ⊙ Mon. Monument Fd. (Found)
- + Cross Cut
- + Cross Fd. (Found)
- T T" Cut
- T T" Fd. (Found)
- Arrow Cut
- Arrow Fd. (Found)
- ∟ Angle Cut
- ∟ Angle Fd. (Found)
- D% Drain Clean Out
- S% Sewer Clean Out
- % Unknown Clean Out
- DMH Drain Manhole
- EMH Electric Manhole
- GMH Gas Manhole
- NPSI MH NPSI Manhole
- SCB MH South Central Bell Manhole
- SMH Sewer Manhole
- WMH Water Manhole
- EM Electric Meter
- GM Gas Meter
- WM Water Meter
- ≡ GV Gas Valve
- ≡ WV Water Valve
- Anchor (Pole)
- ⊠ CB Catch Basin
- ⊖ D.I. Drop Inlet
- ⊖ D.I. Drop Inlet
- ⊖ D.S. Down Spout
- ⊖ FH Fire Hydrant
- ♿ Handicap
- ⊖ Stand Pipe
- Lt. (Light) Pole
- ⊖ Power Pole
- ⊖ Sign
- ⊖ Tele. (Telephone) Pedestal
- ⊖ Traffic Lt. (Light)
- CATV Cable Television Line
- D Drain Line
- G Gas Line
- S Sewer Line
- T Telephone Line
- W Water Line
- UG E Underground Electric Line
- UG T Underground Telephone Line
- Overhead Power Line
- Fence
- Property Line
- Concrete
- Building
- R/W Right of Way



one  
 call before  
 you dig.  
 1-800-872-8080

Note:  
 The locations of underground and other nonvisible utilities shown hereon have been determined from data and/or extracted from records made available to us by agencies controlling such records. Where found, the surface features of locations are shown. The ACTUAL nonvisible locations may vary from those shown hereon. Each agency should be contacted relative to the precise location of its underground installation prior to any reliance upon the accuracy of such locations shown hereon, including prior to excavation and digging.

THE SERVITUDES AND RESTRICTIONS SHOWN ON THIS SURVEY ARE LIMITED TO THOSE SET FORTH IN DESCRIPTION FURNISHED US AND THERE IS NO REPRESENTATION THAT ALL APPLICABLE SERVITUDES AND RESTRICTIONS ARE SHOWN HEREON. THE SURVEYOR HAS MADE NO TITLE SEARCH OR PUBLIC RECORD SEARCH IN COMPILING THE DATA FOR THIS SURVEY.

Note:  
 Improvements may not be to scale for clarity. The dimensions shown prevail over scale.  
 All lot angles as per plan of sub.

Date: December 7, 2022 Scale: 1" = 30'  
 This plat represents an actual ground survey made by me or under my direct supervision and control and meets the requirements for the Standards of Practice for Boundary Surveys as found in Louisiana Administrative Code TITLE 46:LXI, Chapter 29 for a Class "C" survey.  
 Made at the request of GGI Properties, LLC Gertrude, Inc.  
 Gilbert, Kelly & Couturie, Inc., Professional Land Surveying  
 2121 N. Causeway Blvd., Metairie LA 70001 (504) 836-2121  
 168760