

- NOTES:**
1. TOP OF CONCRETE DECK AT ELEV. FROM REF. ELEV.
 2. TOP OF STEEL BEAMS (-4 1/2") BELOW TOP OF CONC. DECK.
 3. CONC. DECK SHALL BE 2 1/2" THK. NORMAL WEIGHT CONCRETE WITH A 28 DAY STRENGTH OF $f'_c = 3$ KSI OVER 2 1/2" DEEP WITH 6" CORRUGATIONS AND A 25 GA. MIN. GALVANIZED COMPOSITE STEEL DECKING. 2 1/2" TOPPING TO HAVE 6% B/B W.W.F. REINF.
 4. ALL STEEL BEAMS BEARING ON MASONRY SHALL HAVE 8" X 5/8" X 0-8" BRG. R. W/ 2 - 3/8" A.A.B.S.
 5. PROVIDE MIN. 12" X 24" SOLID C.M.U. PIER WHERE SHOWN ON PLANS THUS DOWN TO FOOTING.
 6. PROVIDE DUE O-WAL REINF. @ 16" O.C. IN ALL EXTERIOR WALLS.

THICKEN SLAB UNDER STEEL STAIRS

5" THK. CONC. SLAB ON GRADE W/ 6" X 6" - 10/10 W.W.F. ON 6" GRAVEL AND 6 MIL. POLYETHYLENE VAPOR BARRIER

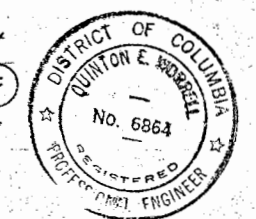
5" THK. CONC. SLAB ON GRADE W/ 6" X 6" - 10/10 W.W.F. ON 6" GRAVEL AND 6 MIL. POLYETHYLENE VAPOR BARRIER

5" THK. CONC. SLAB ON GRADE W/ 6" X 6" - 10/10 W.W.F. ON 6" GRAVEL AND 6 MIL. POLYETHYLENE VAPOR BARRIER

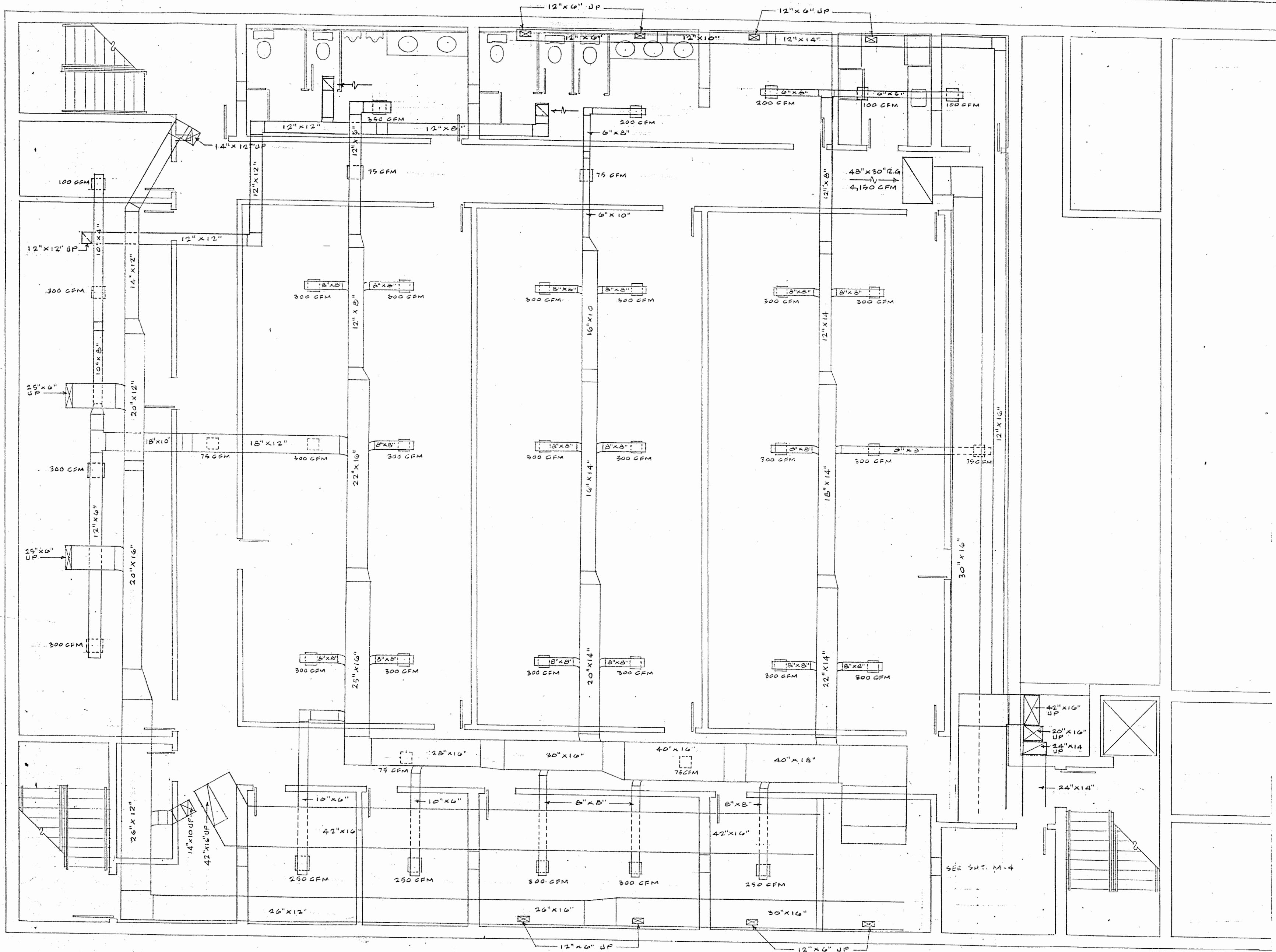
FIRST FLOOR FRAMING PLAN

1/4" = 1'-0"

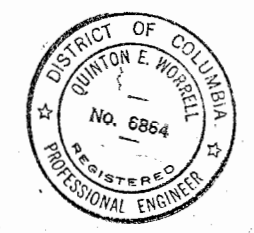
C A L E



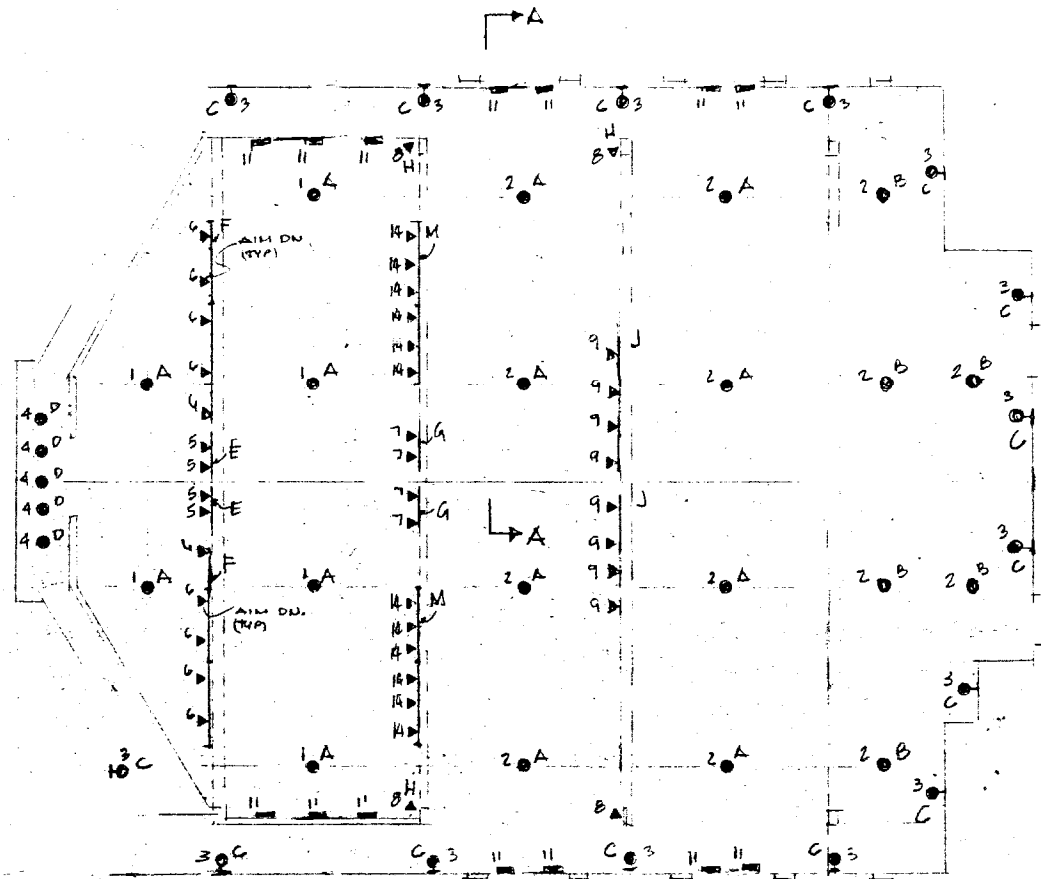
PROPOSED JERICO CHURCH 4418 DOUGLAS ST. N.E. WASHINGTON, D.C. LOT 40	
SCALE: AS NOTED	APPROVED BY:
DATE: JUNE, 1986	DRAWN BY: W.G.R.
GE WORRELL ASSOCIATES	REVISION
DRAWING NUMBER	5-2



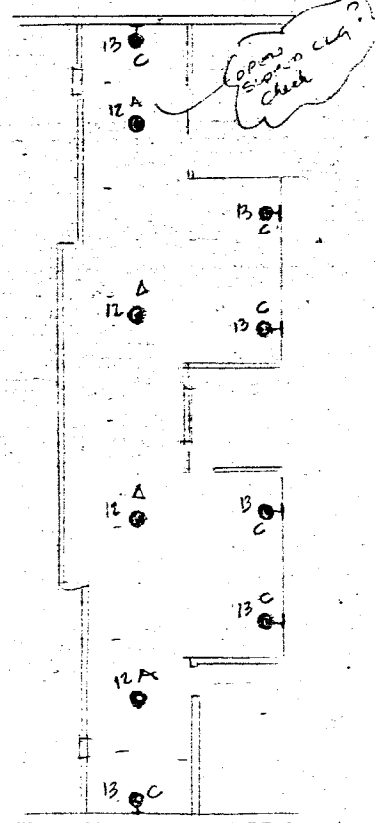
BASEMENT FLOOR PLAN
 SCALE 1/4" = 1'-0"



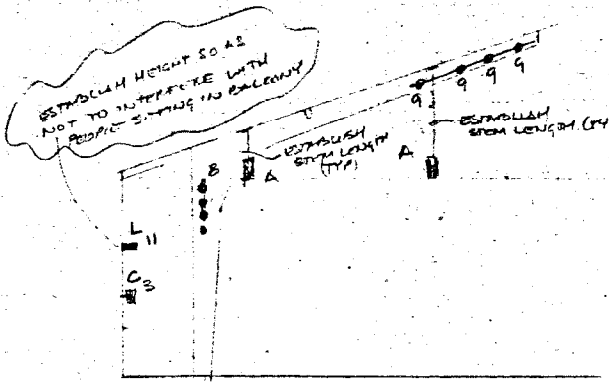
PROPOSED JERICHO CHURCH 4419 DOUGLAS ST. N.E. WASHINGTON, D.C. LOT 39		
SCALE: AS NOTED	APPROVED BY:	DRAWN BY: W.G.R.
DATE: JUNE, 1986	REVISOR:	REVISION:
D E WORRELL ASSOCIATES		
DRAWING NUMBER		M-1



FIRST FLOOR LG. PLAN



BALCONY LG. PLAN



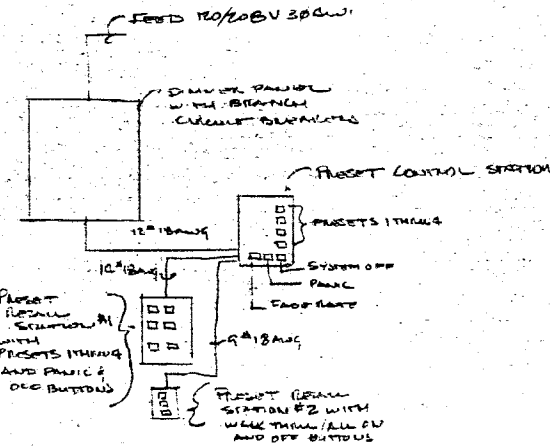
SECTION A-A

GROUP	DESCRIPTION	QUANTITY	WATTS	LAMP TYPE	FIXT. TYPE	HFQ# CAT #
1	SANCTUARY PENDANT FIXTURES	(6) @ 660 =	3,960	1-300W R-40; 6'00W A-19	A	VISA CH 652-SBZ
2	CONGREGATION PENDANT FIXTURES & PENDANT FIX AT UNDERSIDE OF BALCONY	(14) @ 660 = 9,240 (2) @ 1080 = 2,160	11,400	1-300W R-40; 6'00W A-19 3-60W A-19 (4x2)	A, B	VLA CH 671-SBZ
3	WALL SCONCE	(15) @ 200 =	3,000	2-100W A-19	C	VISA CH 651-SBZ
4	BAPTISTRY DOWN LIGHTS RECESSAD ADJUSTABLE 1 7/8" D 6" PROTRUSION	(5) @ 250 R PAK 3B =	1,250	R250 PAK 3B	D	CAPRI ADGX-2502
5	BAPTISTRY SPOTS (TRACK MTD. ADJUSTABLE)	(4) @ 300W	1,200	800W R40 SPOT	E	CAPRI-KT201-1-P KL3-KH3/ KT4P/CAB
6	CHOIR SPOTS (TRACK MTD. ADJUSTABLE)	(10) @ 300W	3,000	300W R40 FLOODS	F	CAPRI-KT201-1-P KL3-KH3/ (2)KTBP-KA11P/CAB
7	PULPIT SPOTS (LOCATION TO BE VERIFIED)	(4) @ 300W	1,200	300W R40 SPOTS	G	CAPRI-KT201-1-P KL3-KH3/ KT4P/CAB
8	SANCTUARY SIDE SPOTS EACH LOCATION (4) ADJUSTABLE ON 8'-0" TRACK VERTICAL MTD	(8) @ 500	2,400	300W R40 FLOODS	H	CAPRI-KT201-1-P KL3-KH3/KTBP KABP
9	SANCTUARY SPOTS (TRACK MTD. ADJUSTABLE)	(8) @ 300	2,400	300W R40 SPOTS	J	CAPRI-KT201-1-P KL3-KH3/KTBP/ KAB
10	ALTER SPOTS (TO BE LOCATED)	(4) @ 300W	1,200	300W R40 FLOODS	K	SAME AS TYPE 'G'
11	INDIRECT WALL MTD EACH WITH (1) 400W MH & (1) 400W MH (80W-19) FORWARD THROW	(1) 400W MH (1) 400W MH (80W-19)	13,020	(1) 400W MH (1) 400W MH	L	STEWART A 21- WM-F-EP- 400W-400S 120 PW
12	BALCONY - CONGREGATION PENDANT	(4) @ 660 =	2,640	SEE TYPE 'A' ABOVE	A	SEE TYPE 'A' ABOVE
13	BALCONY WALL SCONCE	(6) @ 200 =	1,200	SEE TYPE 'B' ABOVE	B	SEE TYPE 'B' ABOVE
14	CHOIR SPOTS (TRACK MTD. ADJUSTABLE)	(12) @ 300	3,600	300W R40 FLOODS	M	CAPRI-KT201-1-P KL3-KH3/ (2)KTBP/KAB/KA11P

* LAMP + BALLAST LOSS 50,240 TOTAL WATTS

ESTABLISH STYL LIGHTS FOR TYPE A
L TO CORNER BAPTISTRY

IS CLG OVER BAPTISTRY?



DIMMER SYSTEM RISE

NOTE: THE PROPOSED LIGHTING HAS BEEN DIVIDED INTO 14 GROUPS THAT WILL HIGHLY USE THE ARCHITECTURE OF THE SPACE AND CREATE LIGHTING SCENES FOR THOSE REGULAR EVENTS - SERVICES, CHOIR, AND COMMUNION - PLUS A TH BETTING THAT'S RESERVED FOR SPECIAL BUT REPEATABLE FUNCTIONS

COST ESTIMATES

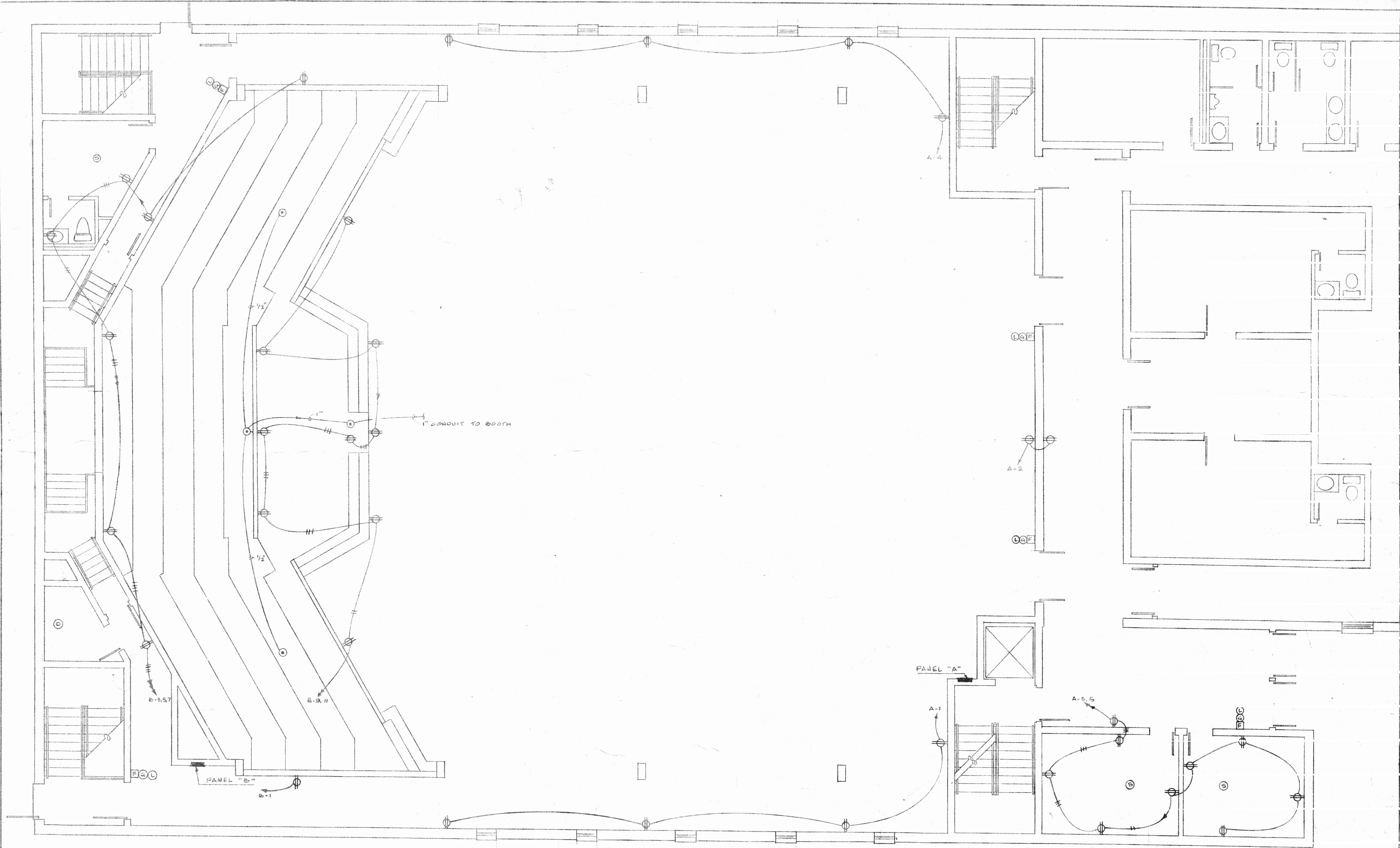
1. DIMMING	140,000
2. TRACK LG.	8,000
3. PENDANT DOWNLIGHTS	20,000
4. WALL SCONCES	11,000
5. INDIRECT LID	12,000
TOTAL	\$191,000

ERICO CHURCH
4419 DOUGLAS ST. N.E. WASH. DC

12-22-87

PRELIMINARY - CHURCH AREA LG. ASSOC. CONTROLS

W. J. [Signature]
ASSOC. LIGHTING ENGINEER



ELECTRICAL - POWER:
 FIRST FLOOR PLAN
 1/4" = 1'-0"

PROPOSED JERICO CHURCH 4419 DOUGLAS ST. N.E. WASHINGTON, D.C.		
SCALE: AS NOTED	APPROVED BY:	DRAWN BY: W.G.R.
DATE:		REVISED:
Q.E. WORRELL ASSOCIATES		
DRAWING NUMBER		E-2