

1712 N Waldron St.

Class A Retail Space For Lease

FOR LEASE



Rent: \$18.00/SF + NNN

Property Features	
Address	1712 N Waldron Street
City, State, Zip	Hutchinson, KS, 67502
Asset Type	Retail
Space Available	4,528 SF +/-

Highlights:

- Class A Retail Space situated on 17th Street -- Hutchinson's primary retail corridor
- High visibility from street, monument signage available
- Built in 2015, Zoned C-4, Door-side parking
- Nearby tenants include Buffalo Wild Wings, Olive Garden, Applebee's, Walmart, Chick-Fil-A, and many more!

*Tenant is currently operating, please do not contact store personnel.

Demographics	1 Mile	3 Mile	5 Mile
Population	5,019	35,526	45,318
Median HH Income	\$61,721	\$65,517	\$66,988
Households	2,178	14,787	18,852

For more information, please contact:

Mike Rivera
 Associate Broker
 913.827.1712
mriviera@amg-cr.com

AMG Commercial Realty
 6320 Lamar Avenue, Suite 107
 Overland Park, KS 66202
www.assetmgmtgrp.com

1712 N Waldron St.

Class A Retail Space For Lease

FOR LEASE



For more information, please contact:
Mike Rivera
Associate Broker
913.827.1712
mriviera@amg-cr.com

AMG Commercial Realty
6320 Lamar Avenue, Suite 107
Overland Park, KS 66202
www.assetmgmtgrp.com

1712 N Waldron St.

Class A Retail Space For Lease

FOR LEASE



Monument Signage included at no charge!

For more information, please contact:

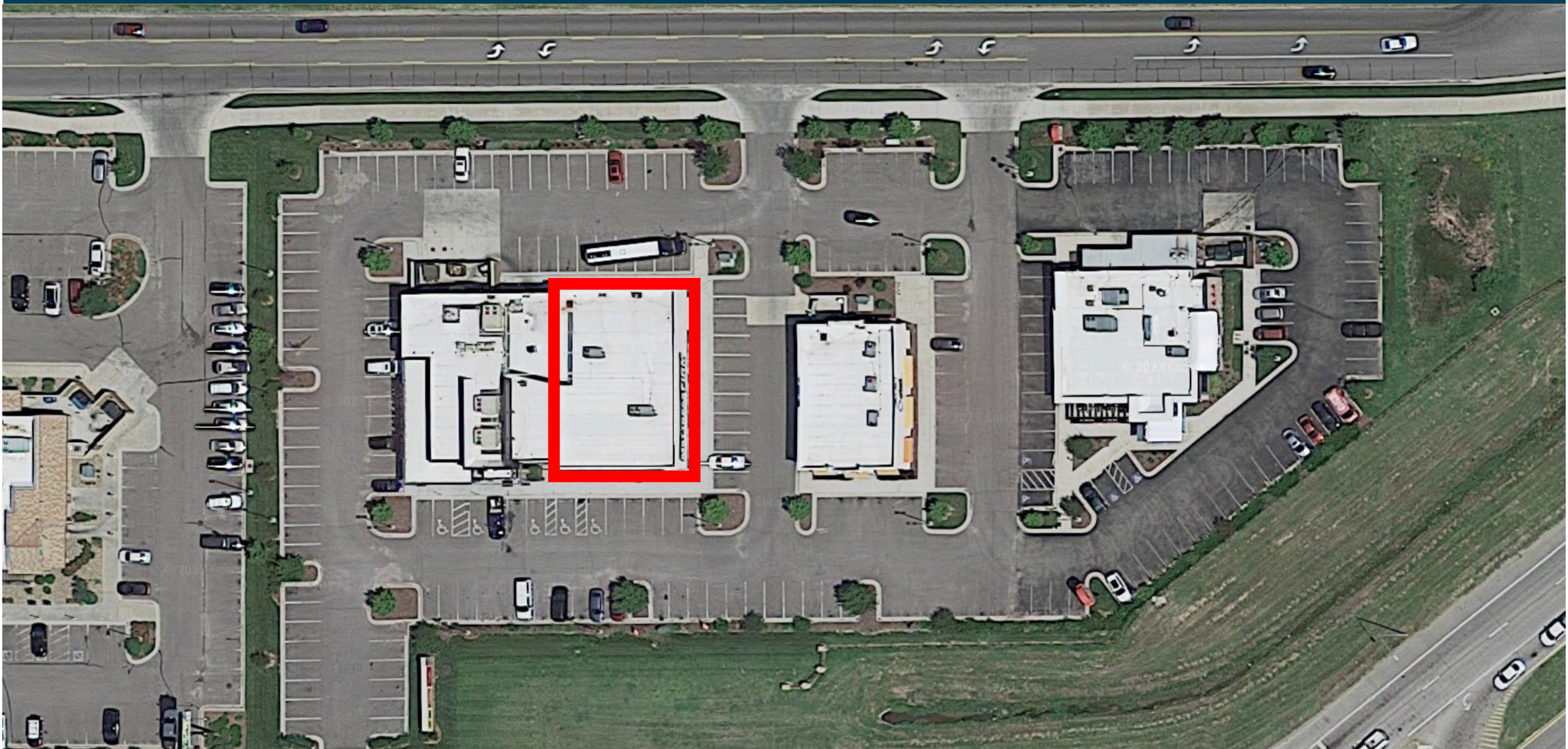
Mike Rivera
Associate Broker
913.827.1712

mrivera@amg-cr.com

AMG Commercial Realty
6320 Lamar Avenue, Suite 107
Overland Park, KS 66202
www.assetmgmtgrp.com

1712 N Waldron St.

Class A Retail Space For Lease



For more information, please contact:

Mike Rivera
Associate Broker
913.827.1712
mriviera@amg-cr.com

AMG Commercial Realty
6320 Lamar Avenue, Suite 107
Overland Park, KS 66202
www.assetmgmtgrp.com