

# EASTPORT COMMERCE CENTER

104 PINNACLE WAY, SUMMERVILLE, SC 29483

MULTIPLE SUITES AVAILABLE | 8,000 - 56,000 SF

**Dalfen**  
INDUSTRIAL



**Bob Barrineau**

Senior Vice President

+1 843 270 7851

Robert.Barrineau@cbre.com

**Brendan Redeyoff, SIOR**

Senior Vice President

+1 843 793 8839

Brendan.Redeyoff@cbre.com

**Tim Raber, SIOR**

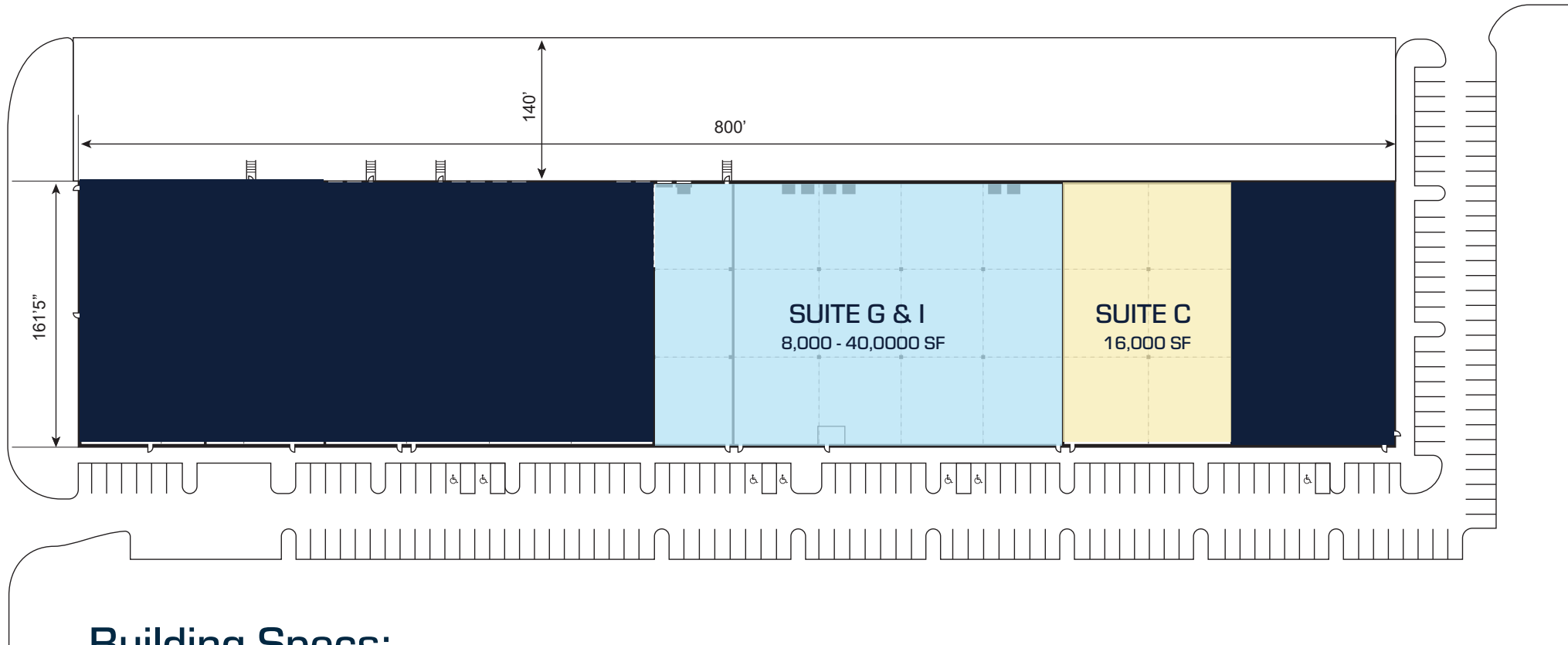
Vice President

+1 843 972 3220

Tim.Raber@cbre.com

**CBRE**

# SITE PLAN



## Building Specs:



30' Clear Height



ESFR Sprinkler System



Tilt Wall Construction



50' X 50' Columns with 60' Speed Bay



25 FC LED Lighting

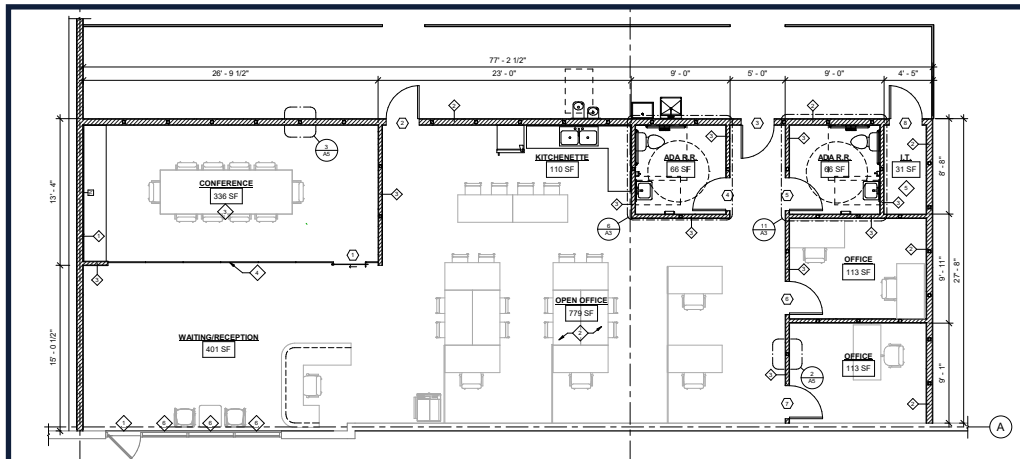


140' Truck Court

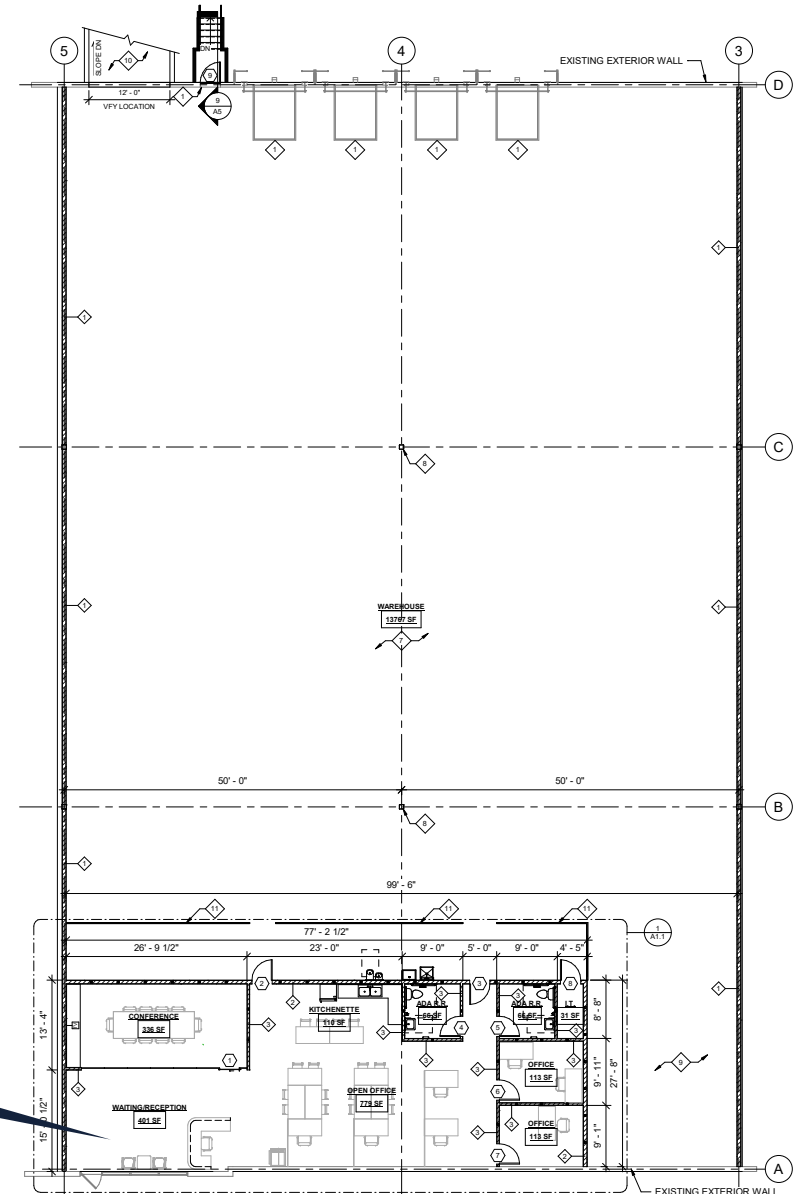
# SUITE C

## Specs:

- Size: 16,000 SF
- Office: 2,233 SF
- Power: 400 Amp 3 Phase 480v
- Drive-In Door: One 12' X 14' with Ramp Access
- Dock High Doors: Four 9' X 10' with Bumpers & Two with Pit Levers
- Parking: 24 Auto Parking Spaces



2,233 SF OFFICE AREA



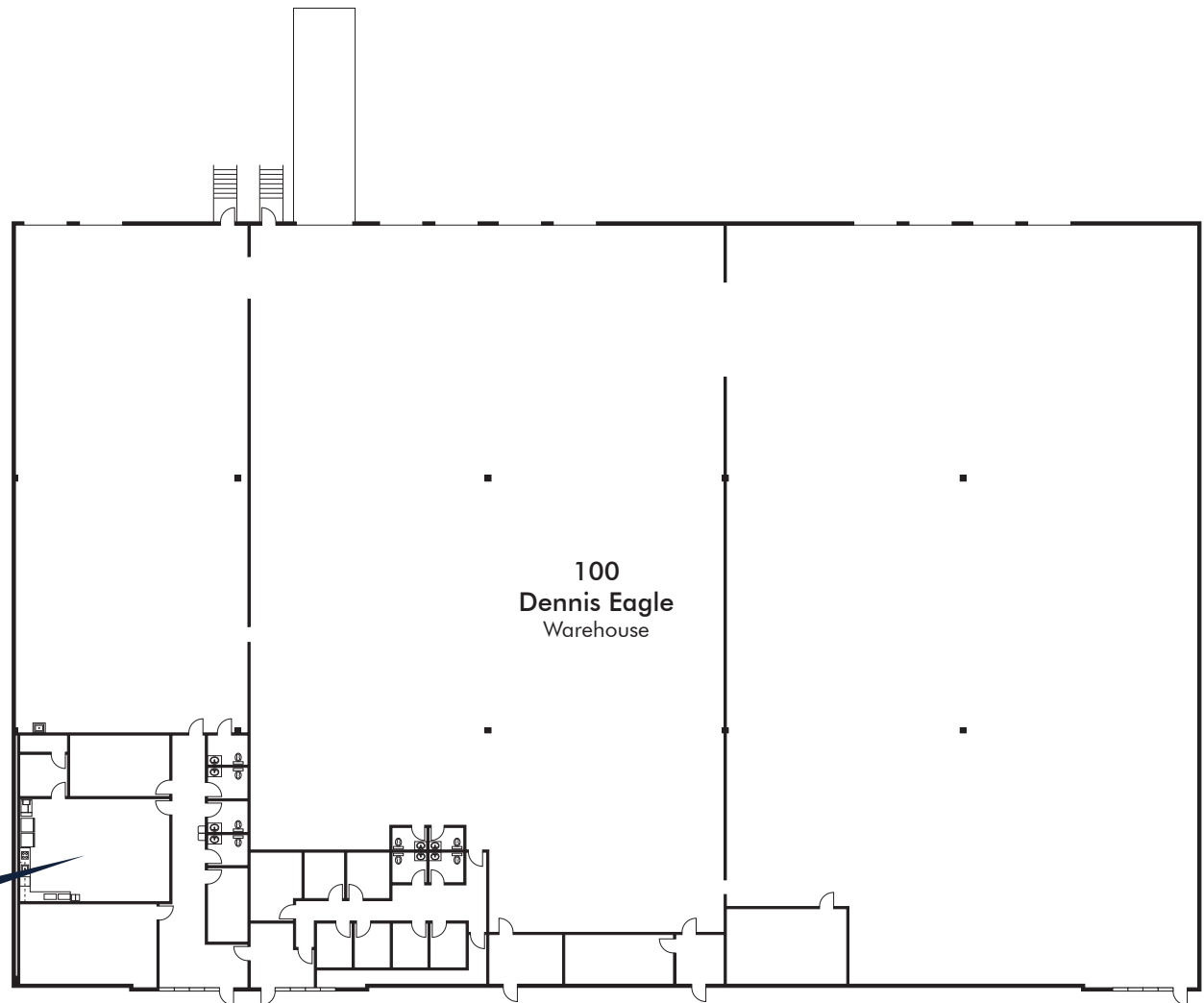


# SUITE G / I

## Specs:

- **Size:** 8,000 - 40,000 SF
- **Office:** 2,500 - 4,000 SF
- **Drive-In Door:** One 12' X 14' with Ramp Access
- **Dock High Doors:** Ten 9' X 10' with Pit Levers & Seals
- **Parking:** Non-Designated
- **Eight Large Warehouse Fans**

2,500 - 4,000 SF OFFICE AREA





# LOCATION & ACCESS



**BOSCH** Scout BOATS  
**ZINUS** **SVE** SOUTHEASTERN FREIGHT LINES  
**CURTISS-WRIGHT** **TWIN STAR HOME**  
**KION** **BAE SYSTEMS** **IFA**  
**VOLVO** **FOOD PACKAGING CORPORATION** **CALI** BAMBOO & MORE  
**THORNE** **Gerber** **@merCare**  
**KONTANE LOGISTICS** **SPYDER**

GOOSE CREEK/MONCK'S CORNER

**VALLEY FORGE** **Parker** **AR** **AdR Logistics**  
**Century ALUMINUM** **Google**  
**JVA Aluminum** **SEN FOX** **ALCOA**  
**AGFA** **Worley** **KNAPHEIDE** SINCE 1848  
**kemira** **LANXESS** **Freemark** SOFTWORKS  
**Sun Chemical** **Nexans** **HT** **HAITIAN ABSOLUTE**  
**symrise** **Phillips INDUSTRIAL SERVICES** **NUCOR** **XPO Logistics**  
**W INTERNATIONAL**

LADSON/PALMETTO

**Comcast xfinity** **Cummins** **ROPER ST. FRANCIS**  
**BOEING** **SHIMANO**  
**AHT** **TCHITCO**

Naval Information Warfare Center  
**ATLANTIC**

**bp**



# EASTPORT COMMERCE CENTER

104 PINNACLE WAY, SUMMERVILLE, SC 29483

MULTIPLE SUITES AVAILABLE | 8,000 - 56,000 SF



## CONTACT US:

**Bob Barrineau**

Senior Vice President

+1 843 270 7851

Robert.Barrineau@cbre.com

**Brendan Redeyoff, SIOR**

Senior Vice President

+1 843 793 8839

Brendan.Redeyoff@cbre.com

**Tim Raber, SIOR**

Vice President

+1 843 972 3220

Tim.Raber@cbre.com

**CBRE**

© 2025 CBRE, Inc. All rights reserved. This information has been obtained from sources believed reliable but has not been verified for accuracy or completeness. CBRE, Inc. makes no guarantee, representation or warranty and accepts no responsibility or liability as to the accuracy, completeness, or reliability of the information contained herein. You should conduct a careful, independent investigation of the property and verify all information. Any reliance on this information is solely at your own risk. CBRE and the CBRE logo are service marks of CBRE, Inc. All other marks displayed on this document are the property of their respective owners, and the use of such marks does not imply any affiliation with or endorsement of CBRE. Photos herein are the property of their respective owners. Use of these images without the express written consent of the owner is prohibited.