

**FOR
SALE
OR
LEASE**



BARRY GARNER VICE PRESIDENT 770-294-4027 BGARNER@STCOM.US	SEAN RAWSON VICE PRESIDENT 678-920-1222 SRAWSON@STCOM.US
---	--



SOUTHTREE

REAL ESTATE

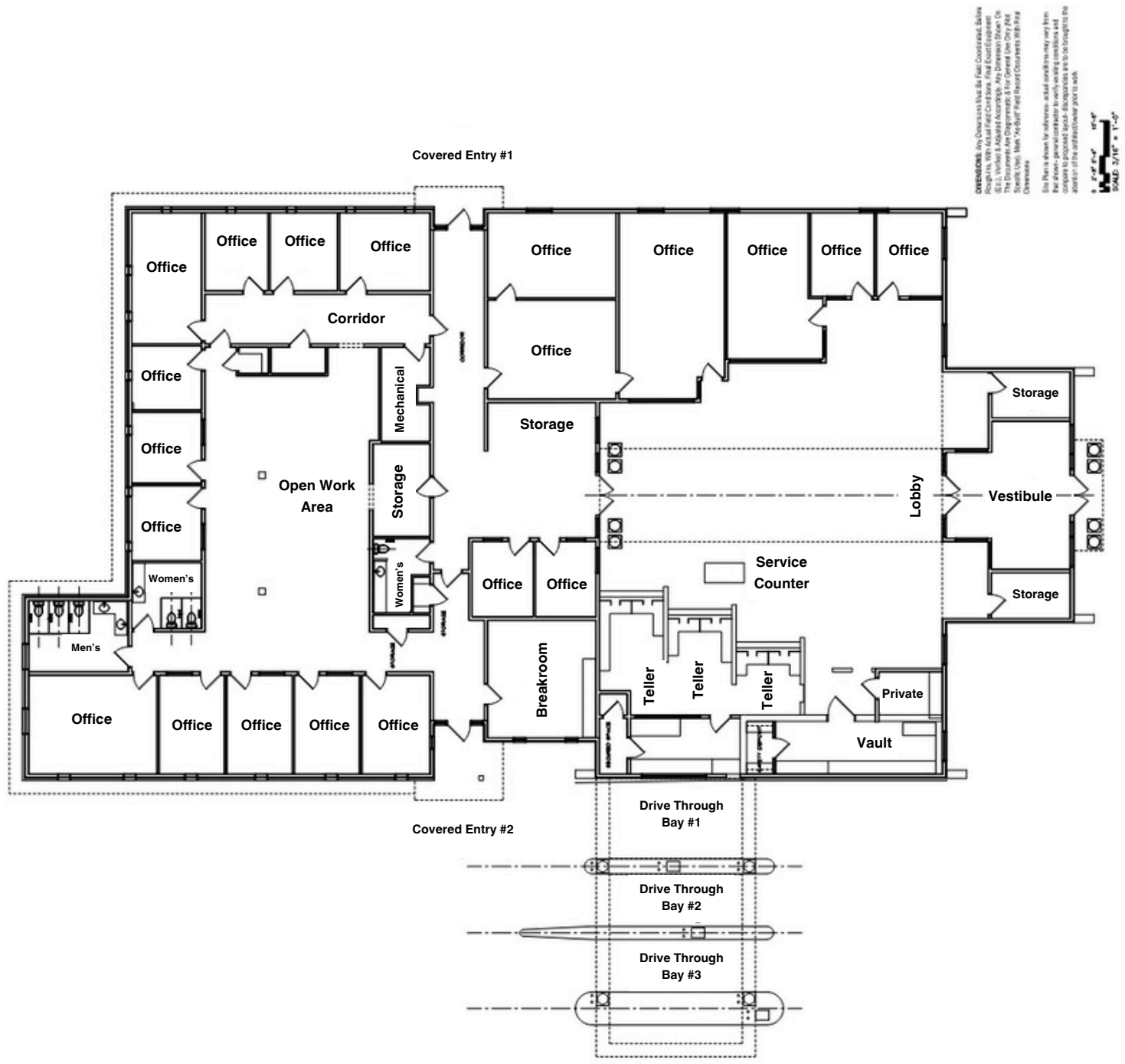
FOR SALE OR LEASE - FORMER BANK BUILDING

675 N JEFF DAVIS DRIVE, FAYETTEVILLE, GA 30214

PROPERTY DETAILS

- » **For Sale or Lease**
- » **Address:** 675 N Jeff Davis Drive
- » **City:** Fayetteville
- » **County:** Fayette
- » **Traffic Counts:**
Hwy 85 - 33,000 VPD,
N Jeff Davis 14,400 VPD
- » **Building SF:** 12,383 SF
- » **Parcel Size:** 3.00 Acres
- » **Zoning:** Gateway Commercial (DMU-GC)
[UDO Zoning Details](#)
- » **Proposed Uses:** Retail, Office, Medical
- » **Former BB&T Bank**
- » **Year Built:** 1985
- » **Sale Price:** Please Inquire
- » **Lease Rate:** Please Inquire





DISCLAIMER: Any Dimensions Must Be Field Checked. Below Roughs, With Actual Field Conditions. Final Exact Equipment, ETC., Vendor & Material Acquisitions. Any Dimension (Drawn Or Not) Are For Information Only. Not To Be Used For Construction Specific Work. Mark "As-Built" Field Record Documents With Field Dimensions.

This Plan is drawn for information, actual conditions may vary from those shown. It is not intended to be used as a contract. All dimensions are to proposed layout. Discrepancies are to be brought to the attention of the architect prior to work.

SCALE: 3/4" = 1'-0"









SOUTHTREE

REAL ESTATE

FOR SALE OR LEASE - FORMER BANK BUILDING

675 N JEFF DAVIS DRIVE, FAYETTEVILLE, GA 30214





Demographics	1 Mile	3 Mile	5 Mile
2010 Population	4,523	23,706	64,858
2023 Population	5,182	27,280	73,855
2028 Population Projection	5,476	28,847	77,121
Average Household Income	\$78,576	\$92,304	\$92,509
Median Household Income	\$64,986	\$73,941	\$73,030
2010 Households	1,812	8,955	23,000
2023 Households	2,073	10,342	26,274
2028 Household Projection	2,190	10,942	27,467



SOUTHTREE

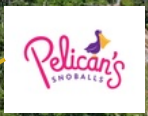
REAL ESTATE

FOR SALE OR LEASE - FORMER BANK BUILDING

675 N JEFF DAVIS DRIVE, FAYETTEVILLE, GA 30214



Fayette Pavilion



Hwy 85 - 33,000 VPD

N Jeff Davis - 14,400 VPD





SOUTHTREE

REAL ESTATE

FOR SALE OR LEASE - FORMER BANK BUILDING

675 N JEFF DAVIS DRIVE, FAYETTEVILLE, GA 30214



Downtown Fayetteville

FAYETTEVILLE
Ford
FAYETTEVILLE, GA

Michaels

McDonald's

United Community

STRONG WATER

MINT

N Jeff Davis - 14,400 VPD

WELLS FARGO

HOFFMAN AUTOMOTIVE
TIRE PROS

Shell

enterprise

WAFFLE HOUSE

AWESOME BEAUTY

BURGER KING

Pelican's SHOES

OUR TEAM LOOKS FORWARD TO WORKING WITH YOU

SEAN RAWSON
VICE PRESIDENT
678-920-1222
SRAWSON@STCOM.US

BARRY GARNER
VICE PRESIDENT
770-294-4027
BGARNER@STCOM.US