

FOR LEASE

CLASS A OFFICE SUITES AVAILABLE

15521 Midlothian Turnpike | Midlothian, VA 23114



S.L. NUSBAUM
REALTY CO.



TRIB SUTTON

Senior Director
O. 804.477.8785
C. 804.337.6525
tsutton@slnusbaum.com

ANDREW BRODIE

Associate
O. 804.944.9254
C. 804.759.5970
abrodie@slnusbaum.com

EMMA WILL

Associate
O. 804.508.7283
C. 804.821.9042
ewill@slnusbaum.com

NATHAN SHOR

Senior Vice President
O. 804.944.2399
C. 804.539.7404
nshor@slnusbaum.com

PROPERTY SUMMARY

CLASS A OFFICE SUITES AVAILABLE
15521 Midlothian Turnpike | Midlothian, VA 23114



S.L. NUSBAUM
REALTY CO.



OFFERING SUMMARY

Lease Rate:	Contact Agents
Building Size:	78,000 SF
Available SF:	Suite 100 - 3,384 SF Suite 102 - 2,017 SF Suite 402 - 2,557 SF
Lot Size:	5.88 Acres

DEMOGRAPHICS	3 MILES	5 MILES	7 MILES
Total Population	22,336	64,919	129,200
Total Households	8,417	24,296	48,432
Average HH Income	\$203,871	\$186,910	\$171,377

PROPERTY OVERVIEW

Class A Office Suites available with direct access to Rt 288 at Midlothian Turnpike

PROPERTY HIGHLIGHTS

- Excellent visibility
- Monument signage available
- Hardscape Patio
- 4.5/1,000 parking ratio
- Backup generator

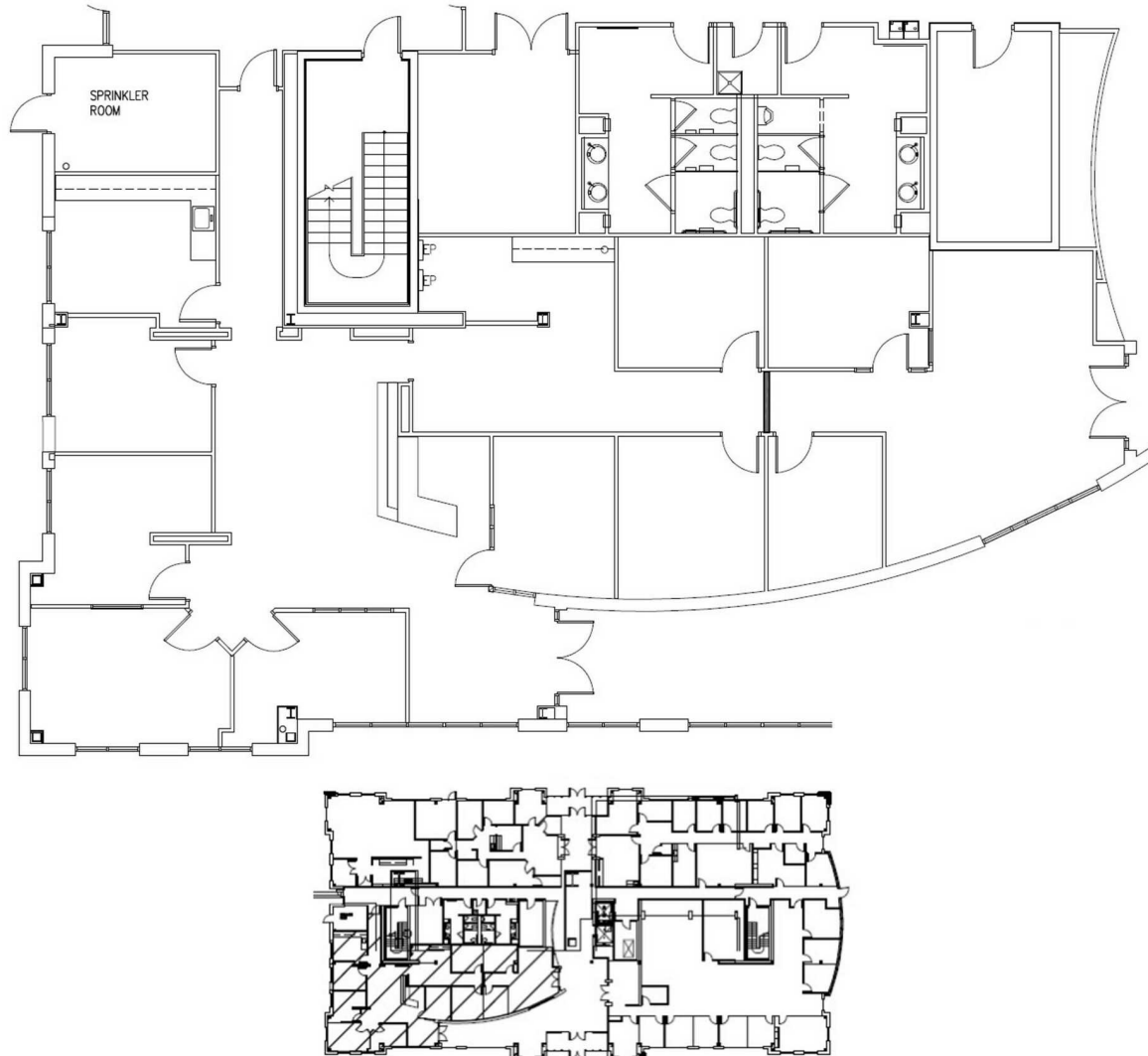
SUITE 100 FLOOR PLAN - 3,384 SF

CLASS A OFFICE SUITES AVAILABLE

15521 Midlothian Turnpike | Midlothian, VA 23114



S.L. NUSBAUM
REALTY CO.



OWNER:	SOUTHSIDE INVESTMENTS	DATE:	02/20/24
PROJECT NAME:	VILLAGE BUILDING	DRAWING NO.:	A1
DESCRIPTION:	SUITE 100 FLOOR PLAN	SHEET:	1
JOB NO.:	2080105	DWG REF.:	VILLAGEBANK_SF1.DWG
SCALE:	N.T.S.		

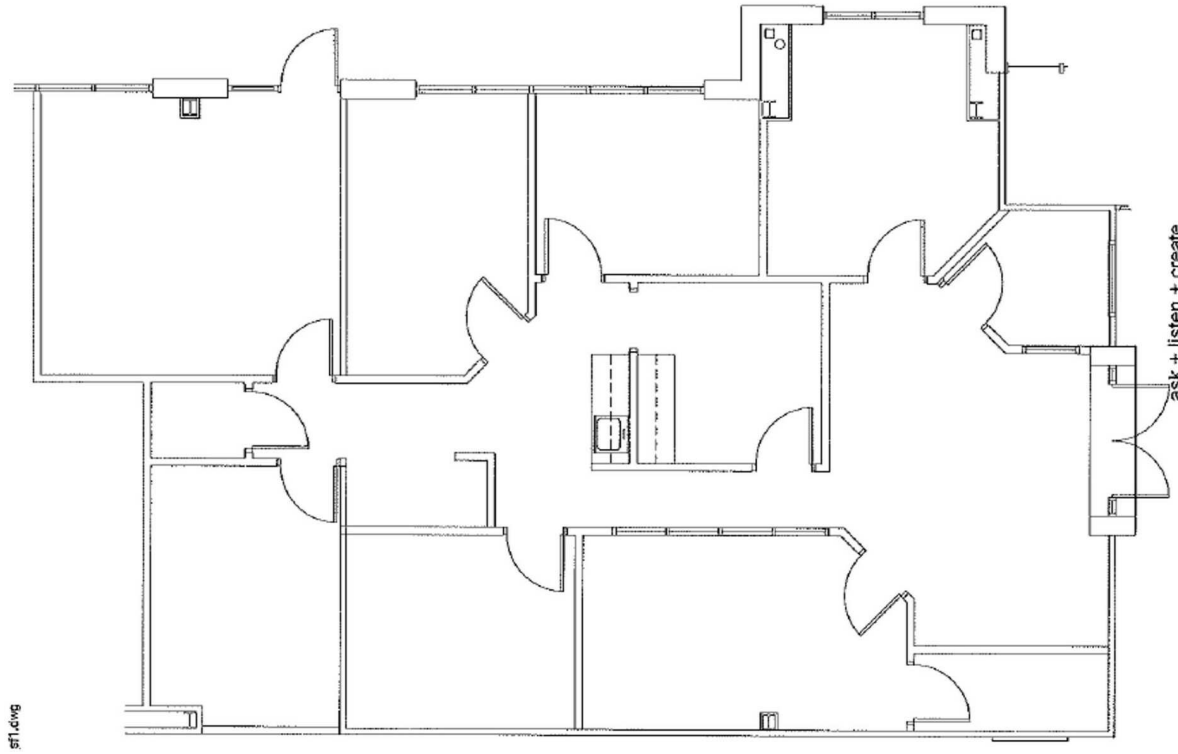
SUITE 102 FLOOR PLAN - 2,017 SF

CLASS A OFFICE SUITES AVAILABLE

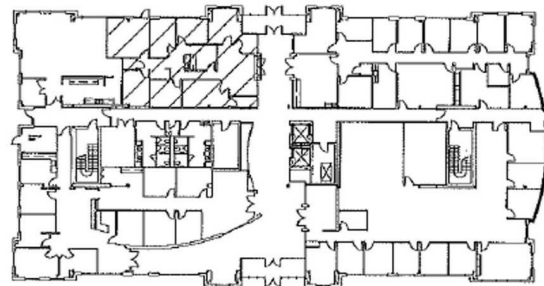
15521 Midlothian Turnpike | Midlothian, VA 23114



S.L. NUSBAUM
REALTY CO.



sf1.dwg



OWNER:	SOUTHSIDE INVESTMENTS	DATE:	01/20/21
PROJECT NAME:	VILLAGE BUILDING		
DESCRIPTION:	SUITE 102 FLOOR PLAN	DRAWING NO.:	A1
JOB NO.:	2080105	DWG REF.:	VILLAGEBANK_SF1.DWG
		SCALE:	1/8" = 1'-0"
		SHEET:	1

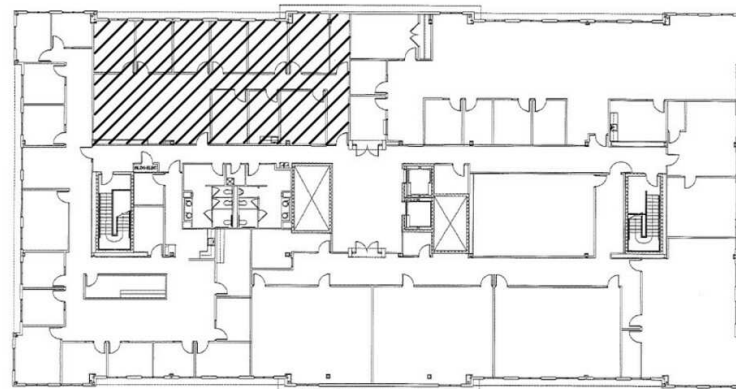
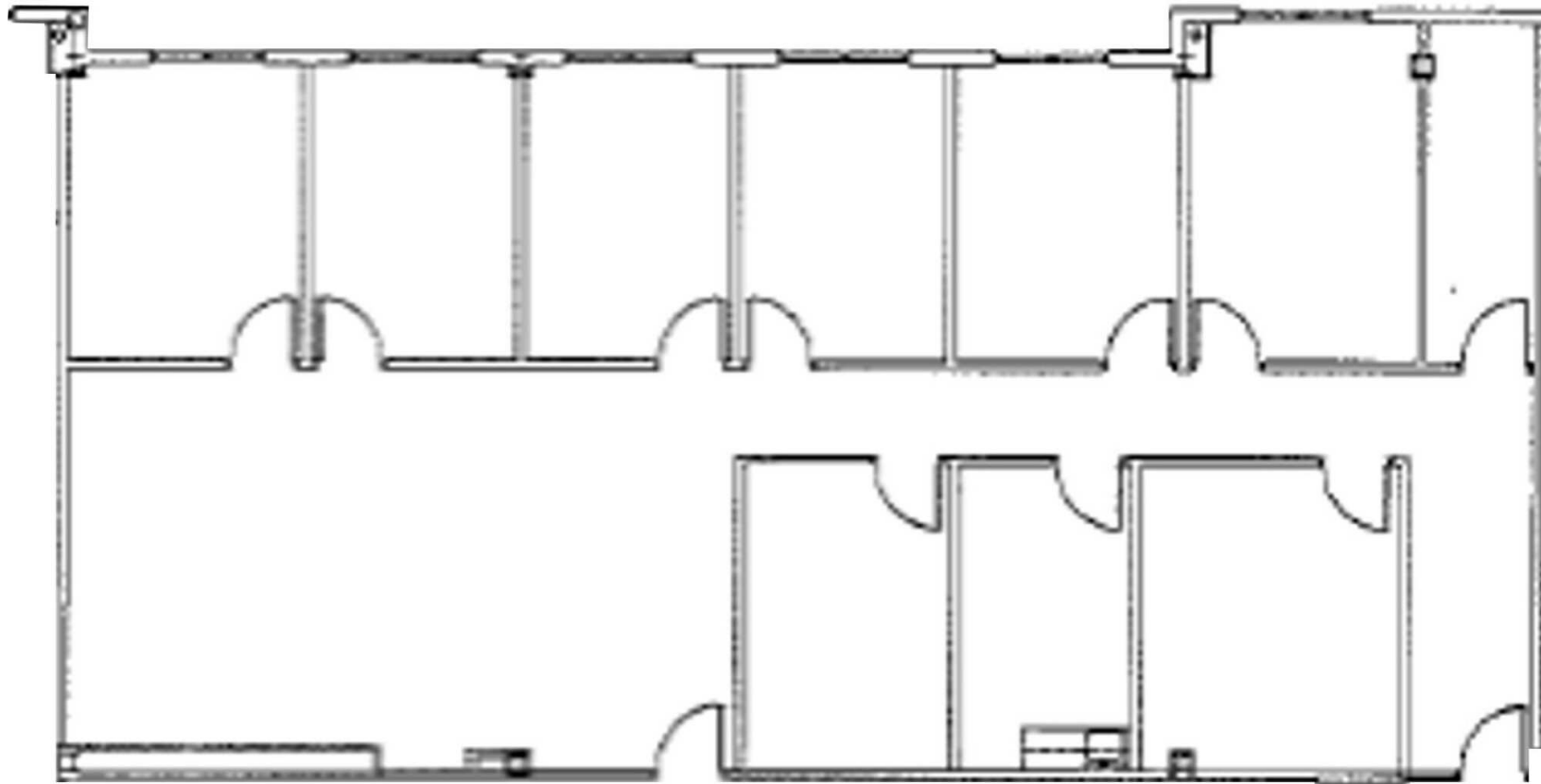
SUITE 402 FLOOR PLAN - 2,557 SF

CLASS A OFFICE SUITES AVAILABLE

15521 Midlothian Turnpike | Midlothian, VA 23114



S.L. NUSBAUM
REALTY CO.

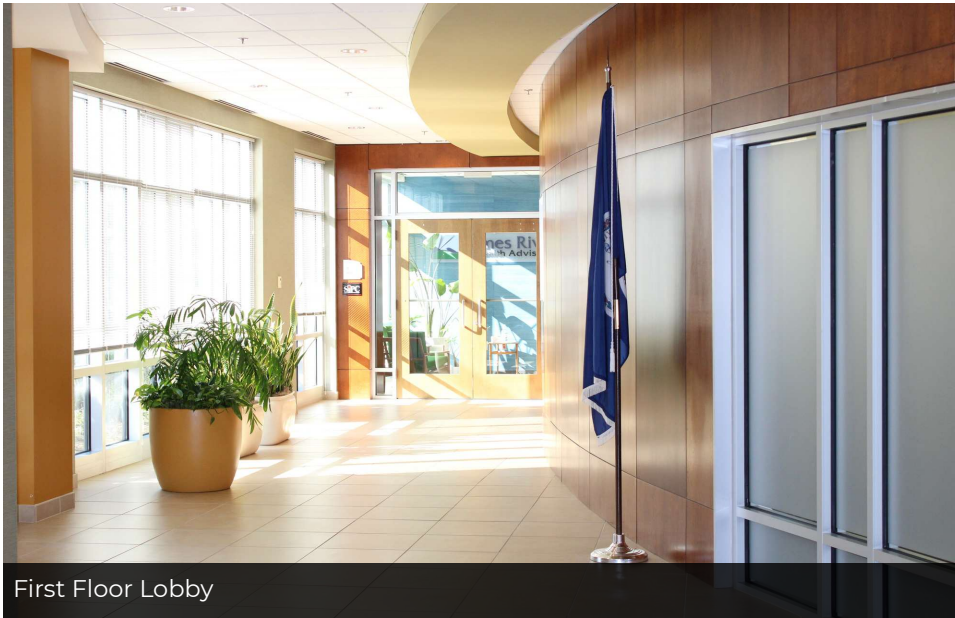


ADDITIONAL PHOTOS

CLASS A OFFICE SUITES AVAILABLE
15521 Midlothian Turnpike | Midlothian, VA 23114



S.L. NUSBAUM
REALTY CO.



First Floor Lobby



First Floor Lobby



Second Floor Lobby



Patio

SURROUNDING DEVELOPMENT, RETAIL & MEDICAL CLASS A OFFICE SUITES AVAILABLE

15521 Midlothian Turnpike | Midlothian, VA 23114



S.L. NUSBAUM

REALTY CO. | SINCE 1906



CONTACT INFORMATION

CLASS A OFFICE SUITES AVAILABLE
15521 Midlothian Turnpike | Midlothian, VA 23114



S.L. NUSBAUM
REALTY CO.



TRIB SUTTON

Senior Director
C. 804.337.6525
O. 804.477.8785
tsutton@slnusbaum.com

ANDREW BRODIE

Associate
C. 804.759.5970
O. 804.944.9254
abrodie@slnusbaum.com

EMMA WILL

Associate
C. 804.821.9042
O. 804.508.7283
ewill@slnusbaum.com

NATHAN SHOR

Senior Vice President
C. 804.539.7404
O. 804.944.2399
nshor@slnusbaum.com

COMMITMENT. INTEGRITY. EXCELLENCE. SINCE 1906.

Serving the Southeast and Mid-Atlantic region for well over a century, S.L. Nusbaum Realty Co. continues to provide a comprehensive experience for our clients and customers in all aspects of the multifamily and commercial real estate industry.

[CLICK HERE TO LEARN MORE](#)

DISCLAIMER:

No warranty or representation, expressed or implied, is made to the accuracy or completeness of the information contained herein, and same is submitted subject to errors, omissions, change of price, rental or other conditions, withdrawal without notice, and to any special listing conditions imposed by the property owner(s). As applicable, we make no representation as to the condition of the property (or properties) in question.