

44 GOUGH STREET

For Lease | Creative Office Space



STARBOARD CRE
LOCAL • INDEPENDENT • ENTREPRENEURIAL



CRAIG HANSSON

craig@starboardcre.com
415.710.7768

MARK MEIER

mark@starboardcre.com
415.299.7042

TCN
WORLDWIDE
REAL ESTATE SERVICES

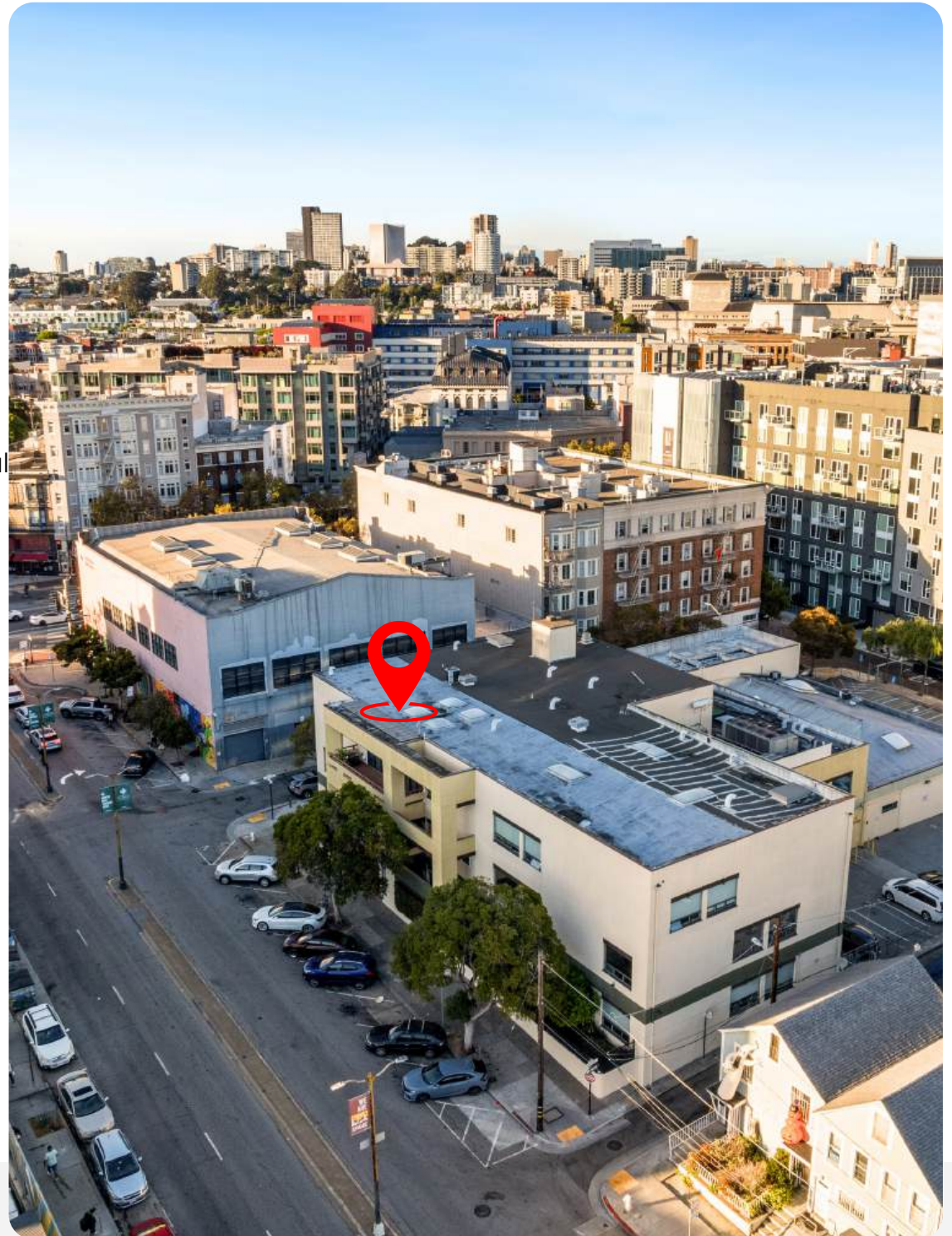
44 GOUGH STREET

Property Summary

- **Address:** 44 Gough Street
- **Property Type:** Office/ Mixed Use
- **Square Footage:** 36,041 Square Ft
- **Lot Size:** 25,749.5 Square Ft
- **Year Built:** 1924
- **Number of Stories:** 3 Stories
- **Zoning:** NCT-3 Residential/Mixed with Commercial

Highlights

- Office opportunity at the entrance to Hayes valley!
- Two blocks from public transportation
- A variety of Smaller suites are available that are customizable to a tenant's needs
- Onsite Parking
- Variety of Cafes in the area.
- Two blocks from one of the best shopping areas in SF



44 GOUGH STREET

Suite 202

- ± 1,876 Square Ft
- Turn-Key Opportunity
- 1 Private Offices
- 1 Storage/IT Room
- Open Plan
- Lots of Window and a Skylight



44 GOUGH STREET

Suite 210

- ±1,085 Square F
- 2 Offices
- Conference Room
- 6 Work Stations
- Can be combined with Suite #203 885sf for a total of 1,970 SQFT

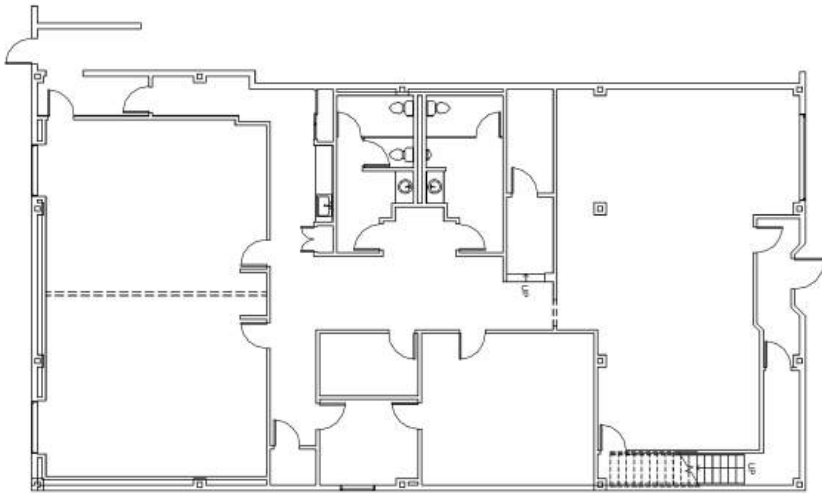


44 GOUGH STREET

Corner Space

1231 Stevenson St., Suite #101

- ± 4,561 Square Ft
- Separate Ground-floor entry
- Two large conference rooms
- 2 private offices
- Kitchenette
- 2 ADA Restrooms in the suite
- Plenty of Natural Light



44 GOUGH STREET | Aerial Photo



44 GOUGH STREET

Agents



Craig Hansson

Vice President
craig@starboardcre.com
CELL: 415.710.7768
CA DRE #01841643

Call

View Profile



Mark Meier

Senior Leasing & Sales Associate
mark@starboardcre.com
CELL: 415.299.7042
CA DRE # 02047169

Call

View Profile



STARBOARD CRE
LOCAL • INDEPENDENT • ENTREPRENEURIAL

STARBOARDCRE.COM
OFC. PHONE 415.765.6900
49 POWELL STREET, SAN FRANCISCO, CA 94102



Unique Vision

We see what others miss

Local Market Leader

No one knows Northern
California like we do

Full-Service Firm

We do it all

Locally based, and technology-forward, our brokers are highly qualified experts backed by a full-service, in-house support team who understand the intricacies of San Francisco real estate. Starboard CRE brings decades of brokerage experience representing over 600 million square feet of space with an aggregate lease value of over 10 billion and investments sold over 3 billion.

CA DRE# 01103056

