

**LAND FOR SALE  
OR BUILD TO SUITE**

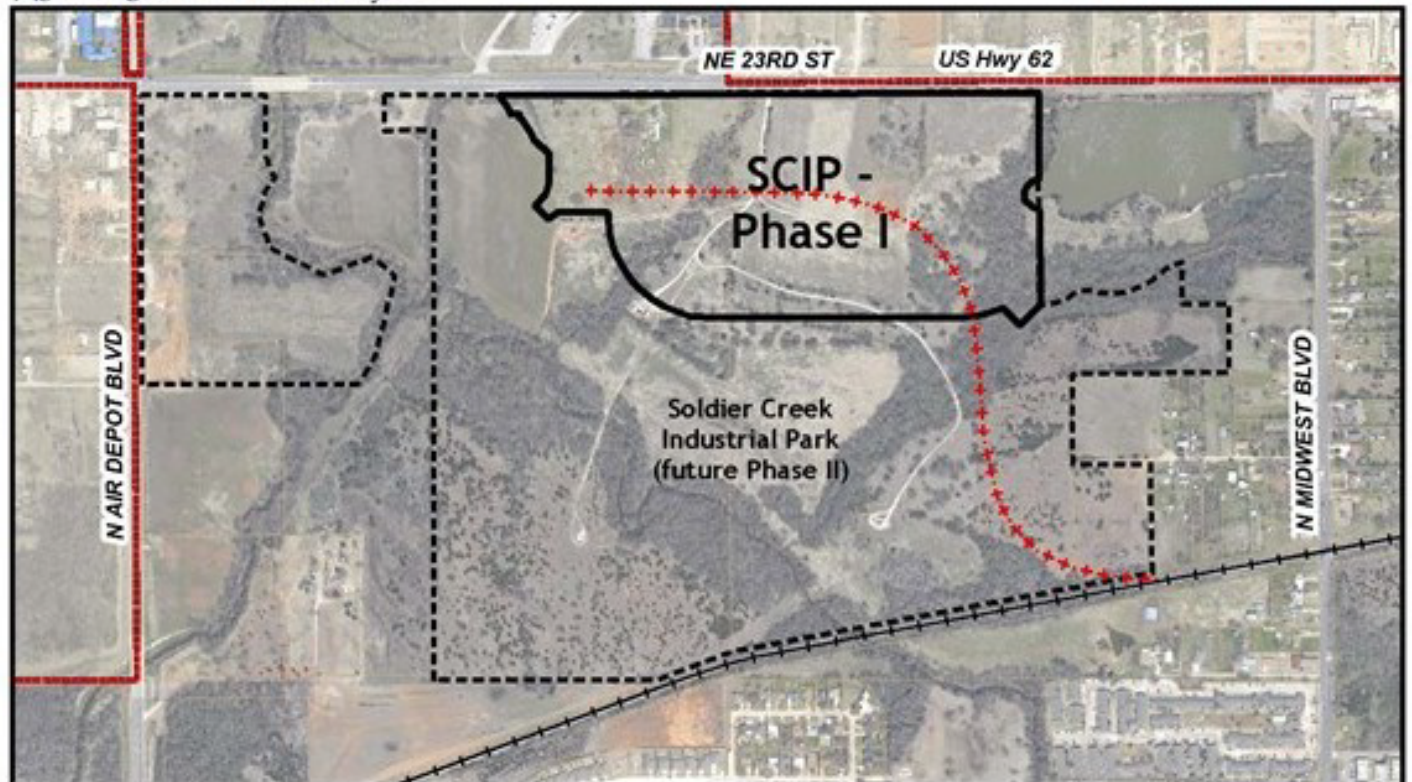
**\$.60 SF/\$26,136 Acre**

# **Soldier Creek Industrial Park**

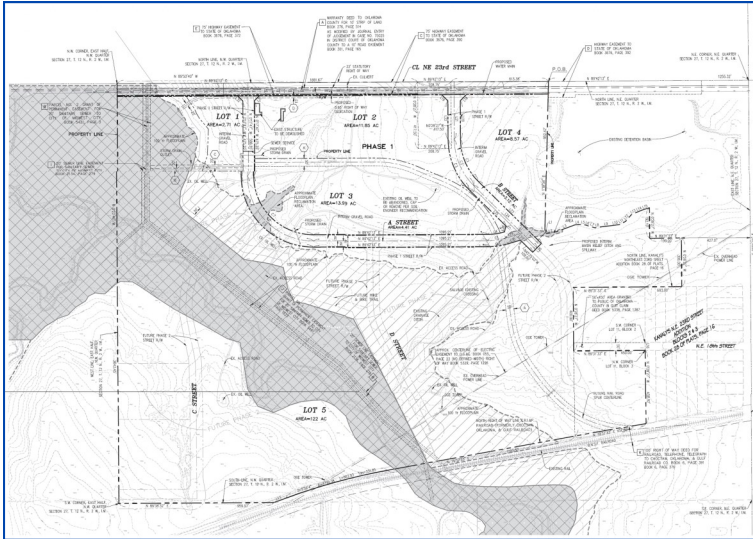
**7450 NE 23rd Street  
Midwest City, OK**



- Competitive pricing and leasing options available
- Oklahoma Department of Commerce and local incentives available for qualified projects
- Additional incentives may apply for 100+ employee companies
- Located in an Enterprise Zone; also eligible for New Market Tax Credits
- Federal Opportunity Zone
- City liaison available to guide building permit applications through the review process
- Short-line service with rail spur access
- Easy access to the I - 35 NAFTA Corridor, I - 40 and I - 44
- Minutes from Tinker AFB and Will Rogers World Airport
- Free technical training available from nearby Mid-Del Career Tech and Rose State College
- Includes roads and utilities
- Public transit route
- Close proximity to recreational trails







## CONTACT

**Malek Massad**  
 SKYBRIDGE REAL ESTATE  
 Malek.Massad@skybridgellc.com  
 (405) 922-5464



**SKYBRIDGE**  
REAL ESTATE

