



2309-C W 40 Hwy

Blue Springs, Missouri

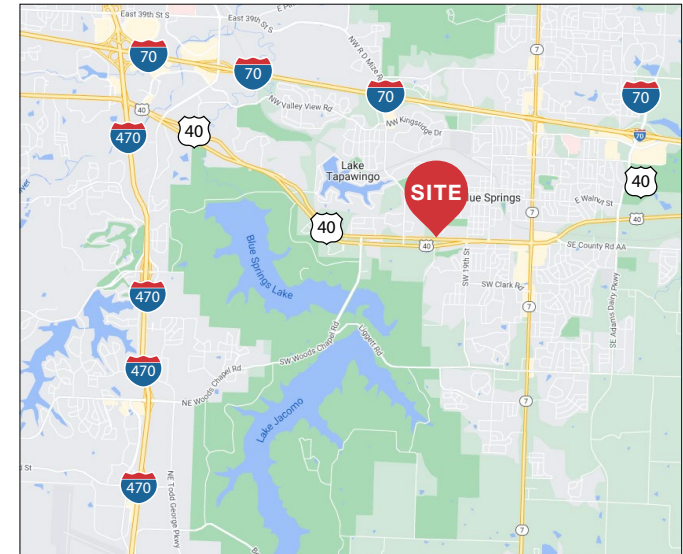
For more information:

Seth Sinovic
+1 913 890 2012
seth@nai-heartland.com

Joe O'Neill, CCIM
+1 913 890 2010
joe@nai-heartland.com

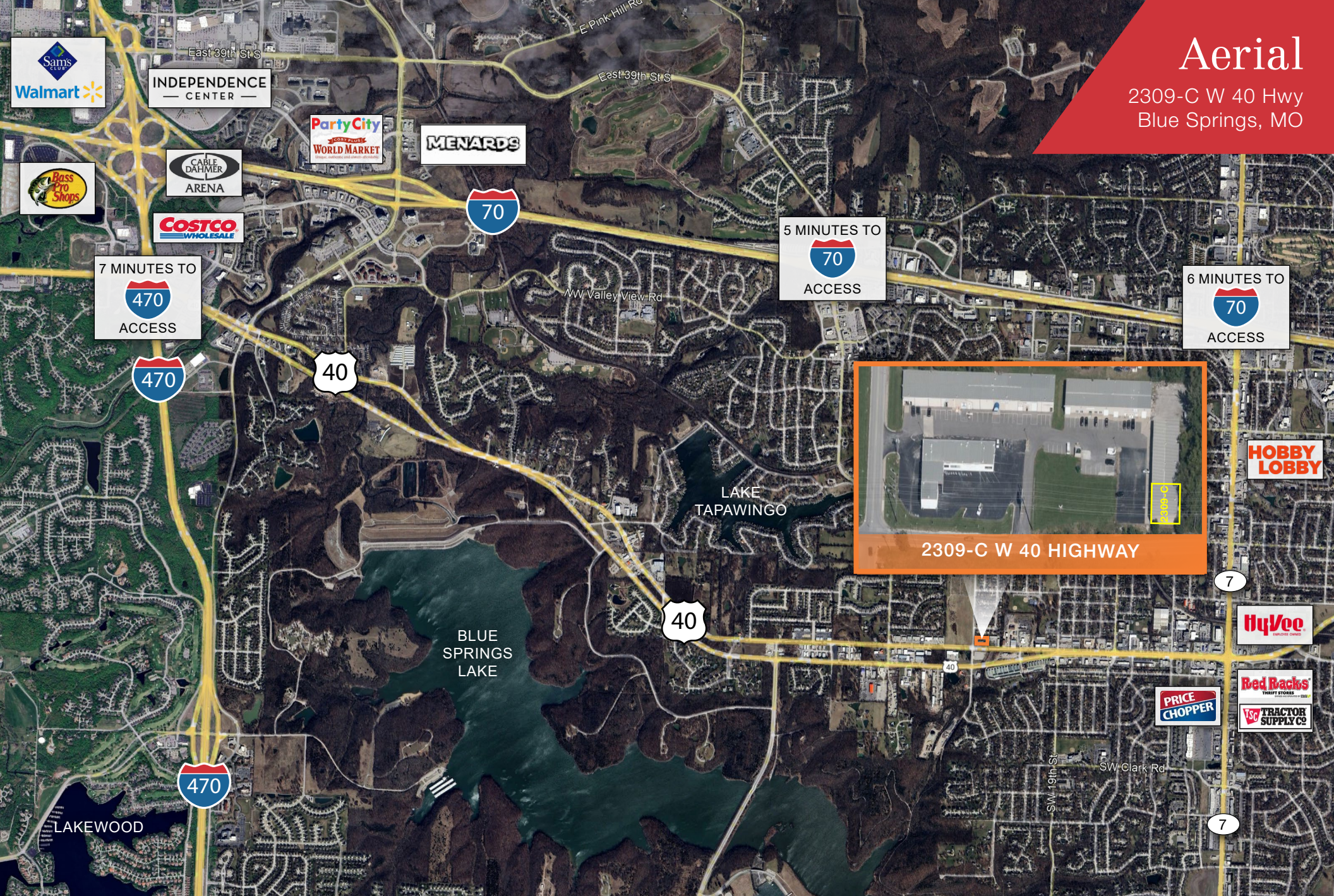
Property Features

- ± 3,000 SF Available (± 525 SF Office)
- Two (2) 10'W x 12'H Drive-in doors
- Monument sign visibility on 40-Hwy
- Fenced outside storage available for additional rent
- 7-minutes East of I-470 and 5-minutes South of I-70



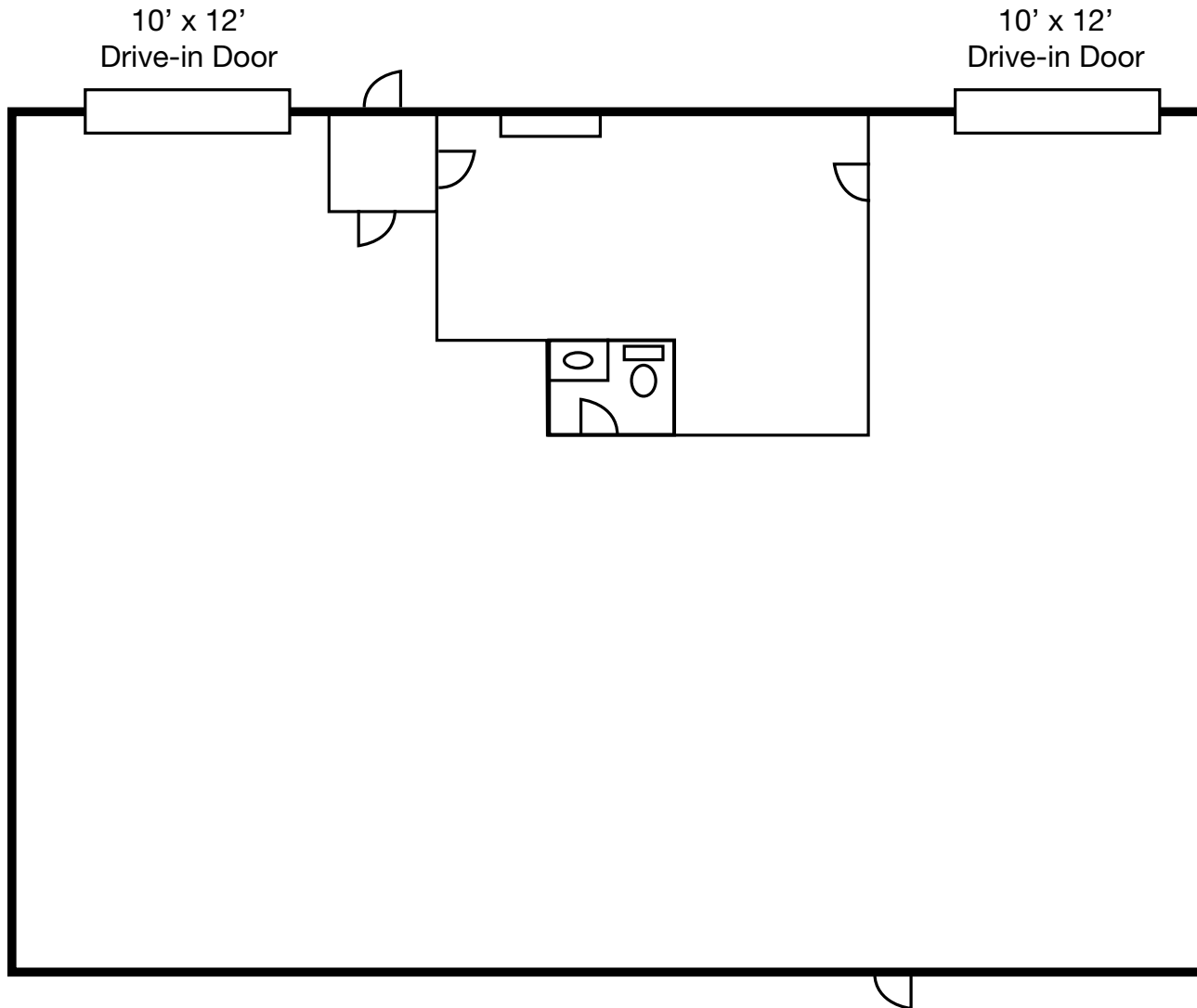
Aerial

2309-C W 40 Hwy
Blue Springs, MO



± 3,000 SF

2309-C W 40 Hwy | Blue Springs, MO



*Approximate floor layout

2309-C W 40 Hwy

- ± 3,000 SF Available (± 525 SF Office)
- Two (2) 10'W x 12'H Drive-in doors