

532 WEST 28TH STREET

BETWEEN 10TH & 11TH AVENUES | CHELSEA

Jardim

532 WEST 28TH STREET

BETWEEN 10TH & 11TH AVENUES | CHELSEA

SIZE: 3,895 SF Ground Floor
814 SF Lower Level

FRONTAGE: 78'

CEILING HEIGHT: 12' - 13'

POSSESSION: Immediate

TRANSPORTATION:   

HIGHLIGHTS:

- Situated at the base of Jardim, a luxury condominium building designed by Isay Weinfeld
- No use restrictions
- Parking spots can be made available
- 27th Street unit features a private elevator and a roof where sculptures can be displayed
- Storefront window panels slide open completely on 27th Street
- Ideal uses: Wine bar, Restaurant, Entertainment, Cafe, Bakery, Art Galleries, Medical
- Neighboring Tenants include:
Rolls Royce, Think Coffee, Wells Fargo, Whitmans, Walgreens, Little Spain, Sweetgreen, Xing Fu Tang, ZARA, Blue Bottle Coffee, & many more!



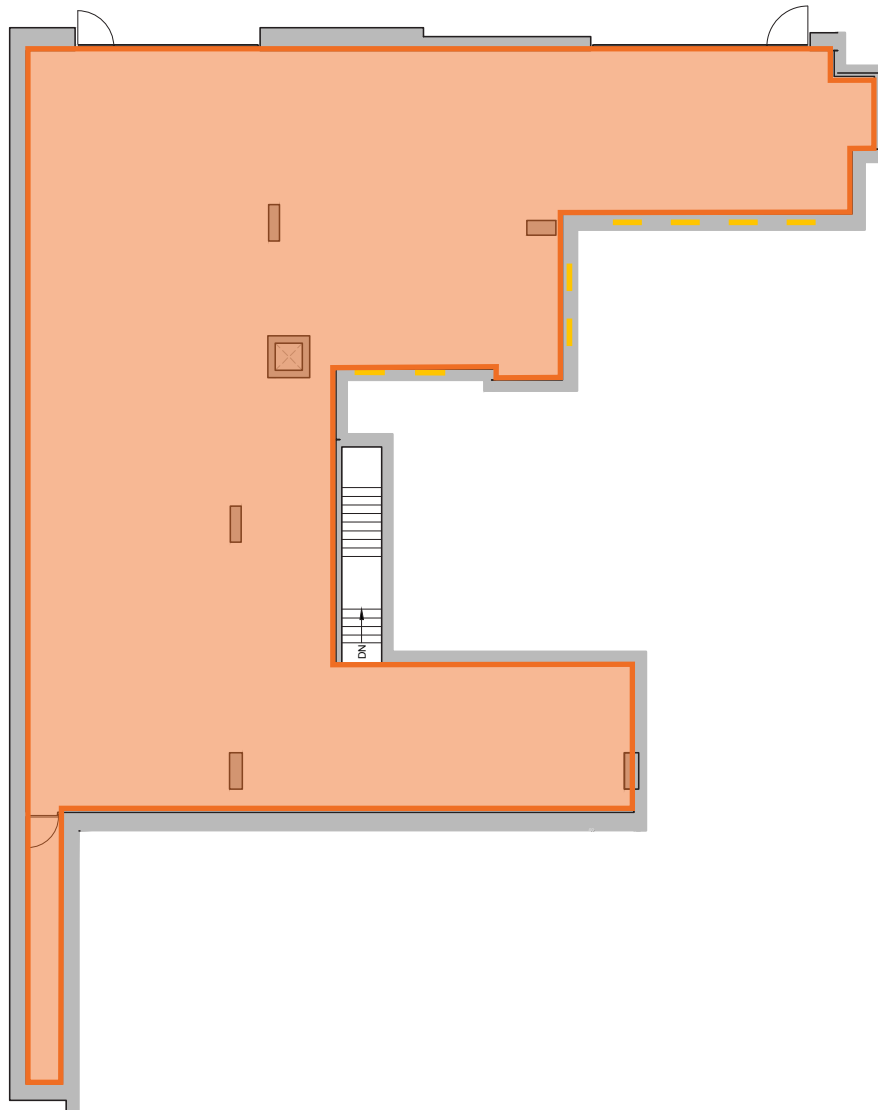
All information supplied in this marketing presentation and/or flyer is from sources deemed reliable and is furnished subject to errors, omissions, modifications, removal of listings from sale/lease and to any listing condition. Any square footage, dimensions, floor plans and/or technical data set forth are approximations and are subject to further elaboration/confirmation.



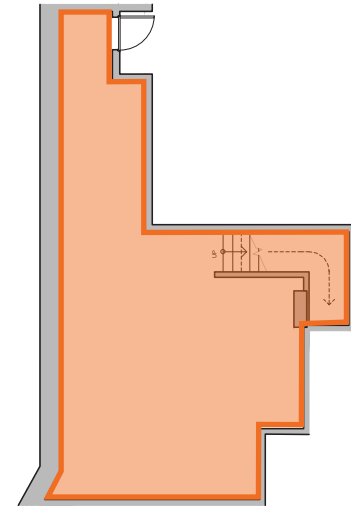
532 WEST 28TH STREET

BETWEEN 10TH & 11TH AVENUES | CHELSEA

FLOOR PLANS:
GROUND FLOOR - 3,895 SF



LOWER LEVEL - 814 SF



532 WEST 28TH STREET

BETWEEN 10TH & 11TH AVENUES | CHELSEA

INTERIOR RENDERS:



All information supplied in this marketing presentation and/or flyer is from sources deemed reliable and is furnished subject to errors, omissions, modifications, removal of listings from sale/lease and to any listing condition. Any square footage, dimensions, floor plans and/or technical data set forth are approximations and are subject to further elaboration/confirmation.

532 WEST 28TH STREET

BETWEEN 10TH & 11TH AVENUES | CHELSEA

532 West 28th Street, known as Jardim, is a luxury condominium nestled in the vibrant Chelsea neighborhood of Manhattan, New York City. Developed by Centaur Properties and Greyscale Development, and designed by acclaimed Brazilian architect Isay Weinfeld, Jardim comprises two 11-story buildings featuring exquisite residences that range from 2 to 4 bedrooms, including a stunning 4-bedroom penthouse with a private terrace.

The Chelsea neighborhood is known for its vibrant arts scene, with numerous galleries, cultural institutions, and proximity to the High Line park. The area offers a mix of residential, commercial, and recreational spaces, contributing to a dynamic urban environment.

Living in Chelsea means experiencing a rich cultural tapestry and vibrant lifestyle, with excellent public transportation options connecting residents to the rest of the city, as well as a wide array of dining, shopping, and recreational opportunities that make this neighborhood truly exceptional.

115,484
TOTAL POPULATION

\$141,959
AVERAGE INCOME

64,413
TOTAL HOUSEHOLDS

\$2B
TOTAL CONSUMER SPENDING



All information supplied in this marketing presentation and/or flyer is from sources deemed reliable and is furnished subject to errors, omissions, modifications, removal of listings from sale/lease and to any listing condition. Any square footage, dimensions, floor plans and/or technical data set forth are approximations and are subject to further elaboration/confirmation.

532 WEST 28TH STREET

BETWEEN 10TH & 11TH AVENUES | CHELSEA

FOR MORE INFORMATION,
PLEASE CONTACT:

DARREN KASSIN

917.684.7271 | DKassin@ksrny.com

AYNSLEY THALER

732.492.6586 | AThaler@ksrny.com

FREDDY SOUID

917.968.0329 | FSouid@ksrny.com

JACK HAMADANI

718.415.0095 | JHamadani@ksrny.com



All information supplied in this marketing presentation and/or flyer is from sources deemed reliable and is furnished subject to errors, omissions, modifications, removal of listings from sale/lease and to any listing condition. Any square footage, dimensions, floor plans and/or technical data set forth are approximations and are subject to further elaboration/confirmation.